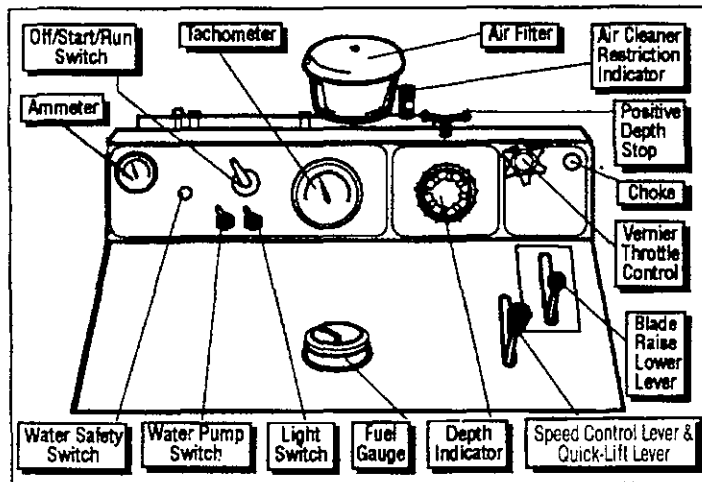


OPERATING INSTRUCTIONS • PARTS LIST FOR PRO 40 II CONCRETE/ASPHALT SAW

GENERAL INSTRUCTIONS:

Before operating the saw, review the instructions in the engine manual for operation of the engine, and become familiar with the controls and features.



BEFORE SAWING:

IMPORTANT: Follow the detailed operating instructions on the top of the cowl.

1. Mount the blade solidly and firmly on the arbor. The lock pin in the outer blade flange must go completely through the blade and into the matching hole on the inside blade flange. Tighten the blade flange nut securely.
2. The front and rear pointer must be checked for alignment with the blade. They must be in line with the blade mounted on the blade shaft. Use a chalk line or a long straight edge to verify alignment.
3. Saw in a straight line. Mark the cutting line clearly so the saw operator can follow the line without difficulty and not have to twist the saw from side to side trying to force the blade back on line.
4. Start the engine. Follow the procedures in Wisconsin Engine Manual. Always have the hydrostatic transmission Speed Control Lever in the **STOP** position when starting the engine.
5. Let the engine warm up at a moderate speed for a few minutes.
6. For wet sawing, open the water valve FULL open. Be sure water the jets in the blade guard are open and each side of blade has an adequate supply of water before you lower the blade. You must have 2-1/2 to 5 gallons of water per minute flowing over the blade to get maximum blade life. If water the supply is interrupted, stop cutting immediately. The Water Safety Switch will stop the engine.

Note: The Water Safety Switch cannot detect a clogged water line because it senses pressure, **NOT** flow.

To start the saw when cutting dry, or when the water is not under pressure, push in the re-set button in the center of the water safety cut/off switch. Once the switch is pushed in to reset, water pressure **MUST** be present to activate the safety shutdown. **Never run the water pump without water flowing through it.**

7. All sawing is done at full throttle. The Governor is factory-set for the correct speed. **Do not change the Governor setting** unless you are changing the blade capacity and need to adjust the blade shaft speed (Refer to charts on page 3).

TO MANEUVER: MANUALLY AND WITH SPEED CONTROL

1. Raise the blade as high as required so the blade will not strike the pavement when maneuvering.

This saw is equipped with an electric powered hydraulic lift. By pulling back on the blade Raise/Lower Lever, or engaging the Quick Lift Lever, the blade will be lifted quickly, without operator effort. The engine need not be running. To lower the blade, simply push the lever forward. To lower slowly, push the lever forward very slightly. The rate of descent of the saw is proportional to the distance the lever is pushed.

GASOLINE PARTS LIST

TARGET®

Pro 40 II Concrete/Asphalt Saw

March, 1994

TARGET®

4320 Clary Boulevard
Kansas City, MO 64130
Customer Service 800-288-5040
Corp. Office 816-923-5040
Cust. Service FAX 800-825-0028
Corp. Office FAX 816-923-7958
Int'l. FAX 816-923-0028

Target Products Asia

Room 806
Taichi Roppongi Mansion
6-3-15 Roppongi
Minato-Ku
Tokyo, Japan 106
PHONE 03-5411-2775
FAX 03-5411-2776

Target Products Australia

26/7 Salisbury Road
Castle Hill, N.S.W. 2154
Australia
PHONE 02-634-4677
FAX 02-680-4982

DIVISION OF
TPI™

2. Pull out the extension guide handles to the length of the desired leverage. Lift the rear wheels just clear of the pavement and maneuver as desired.
3. The hydrostatic Speed Control Lever lets the operator quickly maneuver the saw forward or reverse at infinitely variable speeds from 0 to approximately 250 ft. per minute forward, and 250 ft. per minute in reverse. By moving the Speed Control Lever backward from the **STOP** position, the saw will move in reverse. By moving the Speed Control Lever forward from the **STOP** position, the saw will move forward. For maximum maneuvering speeds, push the Speed Control Lever all the way forward, or all the way backward for reverse.

IMPORTANT: When maneuvering with power, the engine should be running at half or more maximum speed so the hydraulic pump can operate efficiently. For maximum speeds in forward or reverse, the engine must be running at maximum speed.

TO START SAWING:

1. Follow all the instructions outlined above.
2. Lower the blade into the cut (never deeper than required) by pushing forward on the Raise/Lower hydraulic control lever located on the right side, top of cowl. A flow control limit is built into the line to prevent abnormally fast lowering of the blade into the cut. Care must be taken when lowering the blade into the cut in order to prevent damage to the blade.

CAUTION: *If the engine should stall for any reason — raise the blade completely out of the cut before starting the engine again!* When lowering the blade into a partially made cut, be certain the blade is perfectly aligned within the cut.

3. **ADJUSTMENT AND USE OF DEPTH INDICATOR** – To properly use the depth indicator, lower the blade until it touches the pavement, then set the pointer on the dial to "0". The pointer will then indicate on the dial the actual depth of the cut as the blade penetrates the concrete.

POSITIVE DEPTH STOP – Lower the blade until it touches the pavement. Set the depth indicator to "0". Cut into the pavement until the blade reaches the desired depth. Turn the Positive Depth Stop handle **CLOCKWISE** until resistance to turning is noticeable. For greater depth, turn the handle **COUNTERCLOCKWISE**. For lesser depth, turn the handle **CLOCKWISE**.

STOP BOLT ADJUSTMENT – To prevent blade flange wear due to contact with the pavement, adjust the 1/2"-13 stop bolt, located between the saw frame and the front axle.

4. Move the Speed Control Lever forward slowly until the desired cutting speed is obtained. Monitor the engine speed shown on the Tachometer for greater cutting efficiency.
5. **ADJUSTMENT FOR STRAIGHT LINE SAWING** – (Adjustment bolt is located at rear, lower left of saw.) Varying job conditions, blade diameter and differences in aggregate hardness can sometimes cause the saw to pull to one side. If this occurs, loosen the two bearing mounting bolts, then turn the adjustment bolt **CLOCKWISE** to correct it if the saw is leading-off to the left, or turn the adjustment bolt **COUNTERCLOCKWISE** if the saw is leading-off to the right. **DO NOT FORCE** the adjustment bolt. Retighten the bearing mounting bolts.

AT FINISH OF CUT:

1. Move Speed Control Lever to the **STOP** position. Bring the blade out of the cut by pulling back on the hydraulic blade raising lever or by engaging the Quick Lift Lever. Raise the blade high enough to clear the pavement when maneuvering the saw.
2. Push the engine throttle to the **IDLE** location.
3. Turn off the water valve.
4. If the hydrostatic speed control is used for maneuvering, the engine should be at half throttle or more—then operate the Speed Control Lever to get the desired speed in either direction.

MAINTENANCE INSTRUCTIONS:

1. **LUBRICATION** – The blade shaft bearings must be greased after every 8 hours of operation. Lubricate the blade shaft while the shaft is rotating at a slow speed by slowly pumping 3 to 5 times or until grease starts to "ooze" from under the seal. All other fittings should be greased after a maximum of 40 hours of operation. If a bearing is subject to continual water spray, it should be greased more often. Use a general purpose #2 lithium based grease without molybdenum disulfide.
2. **CHECK ENGINE OIL DAILY** – Keep oil at the proper level. Keep oil clean. Change every 50 hours of operation using oil meeting the API classification MS, SD, SE or better. Change the filter with every oil change. System capacity with filter is 5 quarts.
3. **CLEAN AIR FILTER** outer element when the Restriction Indicator red signal appears. Do not clean the inner safety element! Replace the inner element yearly, or if it becomes damaged. Clean the pre-cleaner dust bowl when dust accumulates.
4. **CHECK HYDROSTATIC TRANSMISSION OIL** level in the oil expansion tank periodically. When adding oil, use SAE30W30 API classification SE, CC, CD or better.
5. **HYDRAULIC LIFTING PUMP** – Check the oil level periodically and add DEXRON II transmission fluid to bring the level to full. Do not overfill, or fluid will be expelled through fill cap assembly when lowering the saw. System capacity is 1.25 quarts.
6. **BELT CARE** – This saw is equipped with factory tensioned high-tensile V-belts. Check the tension as it is set on the new saw and never tension beyond this point. Use a V-belt tension test to check the setting on a single belt of a matched set of V-belts by applying load at the center of the belt span. Deflection should be 5/16" with a 5 to 6 lb. load. Never allow them to slip as not enough tension will destroy the belts quickly. Change the belts in sets only.
7. **HYDROSTATIC TRANSMISSION OUTPUT CHAIN** – If the chain becomes too loose it may be tightened by loosening the four hydrostatic transmission bolts and moving the unit up in the adjusting slot. A jack screw is under the transmission to assist movement and to retain position. Retighten the transmission bolts after adjustment.

CAUTION: *Do not overtighten the chain.* The correct tightness allows a slight amount of slack. After tightening the chain, rotate each sprocket, stopping every 90 degrees and recheck to make sure the chain is not overtightened.

Periodically lubricate the chain with oil to reduce chain wear. The easiest way to apply it is with a small brush.

8. ENGINE CARE – See the Wisconsin engine manual. Clean dust and dirt from cooling the fins daily, or as required, to provide adequate cooling.

GOVERNOR SETTING

Wisconsin Engine Model VG4D

GOVERNOR ADJUSTMENT – The Governor Rod connection to the carburetor must be very carefully adjusted for length, otherwise the Governor will not function properly and will cause the engine to surge. With the engine at rest, the Governor Spring will keep the flyweights in, and the Control Rod must be long enough to hold the carburetor throttle wide open at that point.

With the Control Rod disconnected from the Governor Lever, as illustrated in Figure 1, push the rod toward the carburetor as far as it will go. This will put the Carburetor Throttle Lever in a wide open position. The Governor Lever should then be moved as far as possible in the same direction. Holding both parts in the above position, the rod should be screwed in or out of the Swivel Block on the carburetor until the bent end of the rod registers with the hole in the lever, then screw the rod one more turn. The extra turn will shorten the linkage slightly and will enable the Carburetor Throttle Lever to bounce back from the **STOP** pin rather than jam against the pin when a load is suddenly applied to an idling engine. This will eliminate excessive wear on the threads in the Carburetor Throttle Swivel Block.

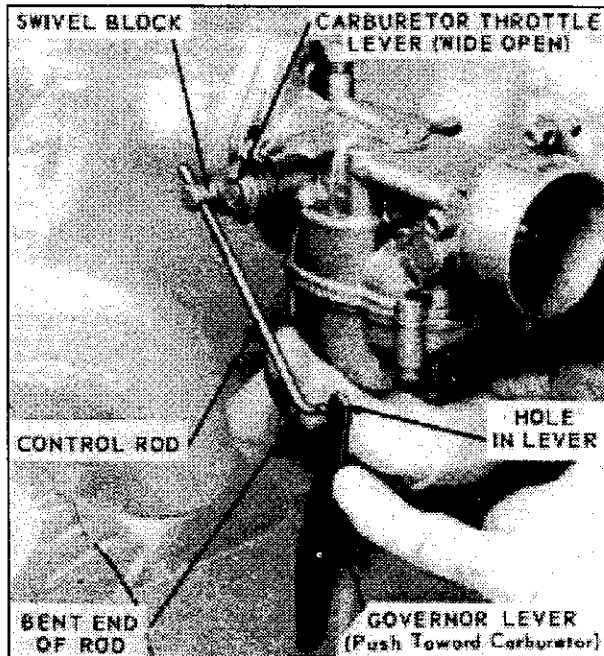


Figure 1

GOVERNOR LEVER (Figure 2) – The Governor Lever is furnished with 12 holes for attaching the Governor Spring. It is very important that the Spring is hooked into the proper hole to suit the speed at which the engine is to be operated. The Governor Lever Chart shows the full load and no load speeds of the engine, and the hole corresponding thereto. Note that the full load speed is less than the no load speed and this must be taken into consideration when readjusting the Governor. An example: if the engine is to be operated at 2400 revolutions per minute under load, the Spring should be hooked into the 11th hole in the Governor Lever, and the Spring tension adjusted with the Adjusting Screw Locknut to run 2550 RPM under no load. The speed at full load will then be approximately 2400 revolutions per minute.

The Tachometer or revolution counter should be used against the crankshaft to check the speed while adjusting the Governor Spring tension. Tightening the Adjusting Screw Locknut will cause higher speeds, while loosening the Locknut will lower the Spring tension and reduce the RPM.

LOAD RPM	NO LOAD RPM	HOLE NO.
1400	1550	4
1500	1650	5
1600	1725	5
1700	1850	6
1800	1950	7
1900	2050	8
2000	2125	8
2100	2250	9
2200	2350	10
2300	2425	10
2400	2550	11

Figure 2

INSTRUCTIONS FOR TRANSPORTING SAW:

When transporting the saw on a truck, the Speed Control Lever **MUST** be in the **STOP** POSITION.

Completely lower the unit to relieve weight on the front axle assembly and Positive Depth Stop while transporting.

To prevent undue stress and strain on the propelling mechanism for prolonged hauling, the saw must be blocked.

Use **EXTREME CAUTION** and **SLOW SPEED** when using the self-propelled drive to move the saw up or down ramps or when loading or unloading from trucks. Going **DOWN** ramps: **DRIVE** the saw **FORWARD SLOWLY**. Going **UP** ramps: **BACK** the saw in **REVERSE SLOWLY**.

FIGURE 1 - COWL & FRAME GROUP

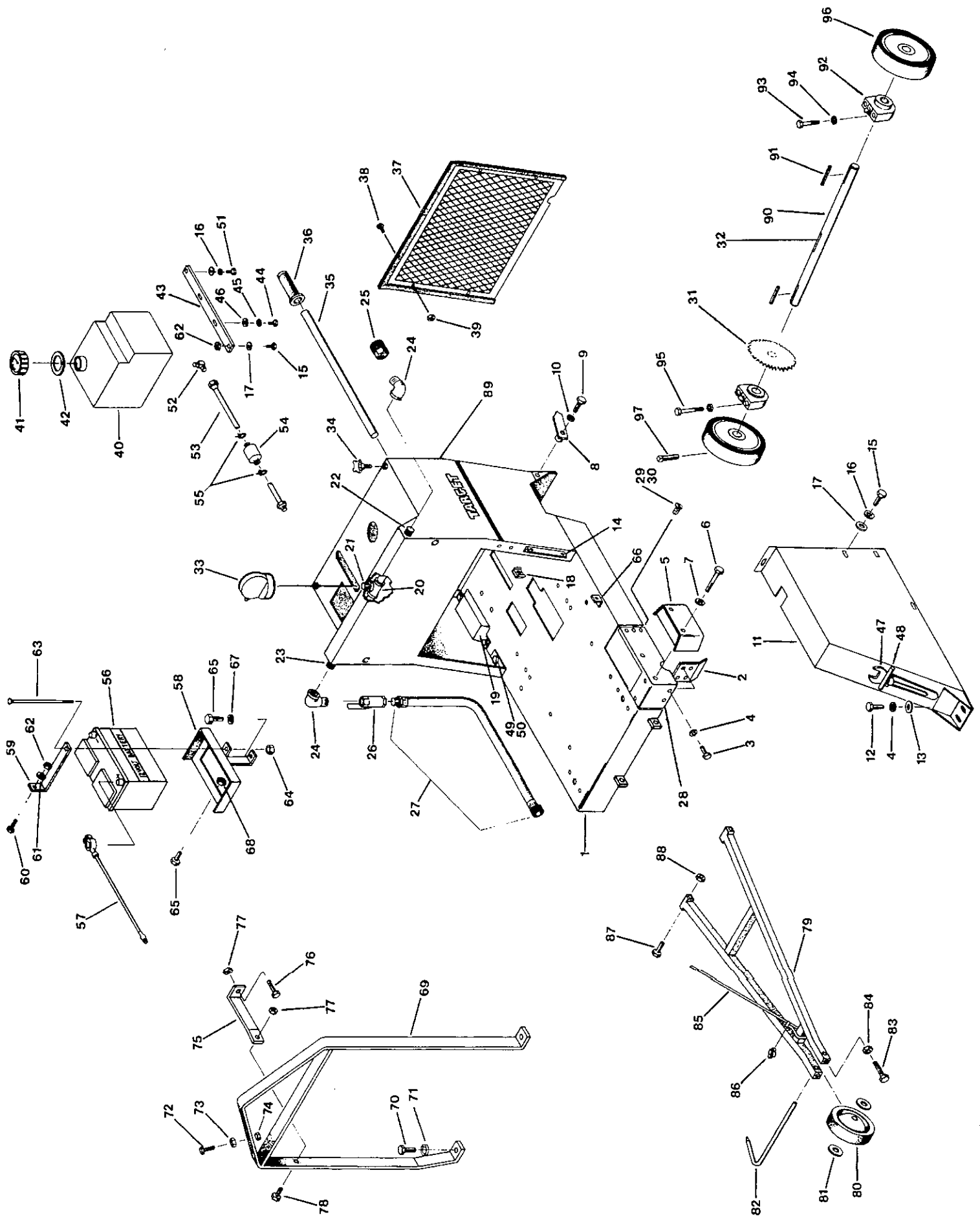


FIGURE 1 - PARTS LIST

DIAG LOC.	PART NO.	QTY. REQ.	DESCRIPTION (* Denotes Metric Item)	DIAG LOC.	PART NO.	QTY. REQ.	DESCRIPTION (* Denotes Metric Item)
1	163630	1	Frame Base	53	043470	1	Fuel Line
2	163608	1	Sheave Guard	54	045639	1	Fuel Filter
3	020323	2	Hex Head Capscrew, 3/8"-16 x 1" lg.	55	045641	2	Hose Clamp
4	020786	4	Lockwasher, split type, 3/8"	56	163121	1	Battery
5	163022	1	Shaft Guard	57	163179	1	Battery Cable, Neg., 40" lg.
6	020334	2	Hex Head Capscrew, 3/8"-16 x 4" lg.		163180	1	Battery Cable, Pos., 52" lg.
7	020786	2	Lockwasher, split type, 3/8"	58	163055	1	Battery Bracket
8	047091	1	Rear Pointer	59	163056	1	Battery Hold Down Bracket
9	020509	1	Hex Head Capscrew, 3/8"-16 x 2" lg.	60	020370	1	Hex Head Capscrew, 1/4"-20 x 3/4" lg.
10	020786	1	Lockwasher, split type, 3/8"	61	020762	1	Flat Washer, SAE 1/4"
11	163733	1	Belt Guard	62	020195	3	Lock Nut, fiber type, 1/4"-20
12	020322	2	Hex Head Capscrew, 3/8"-16 x 3/4" lg.	63	163123	1	Battery Hold Down Bolt
13	020764	2	Flat Washer, SAE 3/8"	64	020197	1	Lock Nut, fiber type, 5/16"-18
14	163075	1	Mounting Bracket	65	020322	3	Hex Head Capscrew, 3/8"-16 x 3/4" lg.
	020370	2	Hex Head Capscrew, 1/4"-20 x 3/4" lg. (NS)	66	139017	1	Tab
	020199	3	Locknut, fiber type, 1/4"-20		020370	2	Hex Head Capscrew, 1/4"-20 x 3/4" lg. (NS)
15	020370	6	Hex Head Capscrew, 1/4"-20 x 3/4" lg.	020784	2	Lockwasher, split type, 1/4" (NS)	
16	020784	6	Lockwasher, split type, 1/4"	67	020786	1	Lockwasher, split type, 3/8"
17	020762	8	Flat Washer, SAE 1/4"	68	020199	2	Lock Nut, fiber type, 3/8"-16
18	139052	2	Retainer Nut, 1/4"-20	69	163084	1	Lift Frame
19	163026	2	Fender	70	15700260A	2	Hex Head Capscrew, 3/4"-10 x 2" lg.
	020370	4	Hex Head Capscrew, 1/4"-20 x 3/4" lg. (NS)	71	020791	2	Lockwasher, split type, 3/4"
	020762	4	Flat Washer, SAE 1/4" (NS)	72	020509	1	Hex Head Capscrew, 3/8"-16 x 2" lg.
	020784	4	Lockwasher, split type, 1/4" (NS)	73	020168	1	Jam Nut, 3/8"-16
20	020730	1	Pipe Tee, 1/2" NPT	74	020136	1	Hex Nut, 3/8"-16
21	020293	1	Close Nipple, 1/2" NPT	75	163655	1	Brace
22	020280	1	Pipe Nipple, 1/2" NPT x 6" lg.	76	020340	1	Hex Head Capscrew, 1/2"-13 x 1-1/4" lg.
23	163623	1	Pipe Nipple, 1/2" NPT x 23" lg.	77	020201	2	Lock nut, fiber type, 1/2"-13
24	020810	2	Elbow, 90° Street, 1/2" NPT	78	020464	1	Hex Head Capscrew, 1/2"-13 x 1-1/2" lg.
25	045642	1	Hose Swivel w/Washer	79	163072	1	Front Pointer Frame
26	040261	1	Ball Valve	80	163582	1	Wheel
27	163656	1	Hose Assy., Water, 60" lg.	81	020766	2	Flatwasher, SAE 1/2"
28	163632	1	Cover	82	160196	1	Pointer
29	020445	3	Machine Screw, Flat Head, 1/4"-20 x 3/4"	83	020377	2	Hex Head Capscrew, 3/8"-16 x 1-1/2" lg.
30	020199	3	Lock nut, fiber type, 1/4"-20	84	020136	2	Hex Nut, 3/8"-16
31	163251	1	Sprocket w/Set Screw, #50, 35 Tooth	85	043204	1	Sash Cord, 130" lg.
32	020073	1	Key, 1/4" sq. x 3" lg.	86	043203	3	Cord Clamp
33	047136	1	Water Safety Switch	87	021411	2	Hex Head Capscrew, 5/8"-11 x 3-1/2" lg.
34	166038	2	Hand Knob	88	020204	2	Lock Nut, fiber type, 5/8"-11
35	117194	2	Handle Extension	89	163650	1	Cowl Weldment (decals not shown)
36	139568	2	Hand Grip		163694	1	Decal, Depth Indicator
37	163250	1	Rear Guard		166289	1	Decal, Operating Instructions
38	020494	4	Hex Head Machine Screw, 5/16"-18 x 1" lg.		166288	2	Decal, Pro 40 II
39	020197	4	Lock Nut, 5/16"-18		163515	2	Decal, Target (side)
40	160071	1	Fuel Tank		166092	1	Decal, Target (rear)
41	160194	1	Fuel Cap w/Gauge		163233	1	Decal, Positive Depth Stop
42	045390	1	Grommet, Rubber		166294	1	Decal, Instrument Panel
43	163025	2	Mounting Bar, Fuel Tank		163695	1	Decal, Throttle and Choke
44	020313	4	Hex Head Capscrew, 5/16"-18 x 3/4" lg.		163719	1	Decal, Raise & Lower
45	020785	4	Lockwasher, split type 5/16"	90	163024	1	Rear Axle
46	020742	4	Flat Washer, SAE 5/16"	91	163130	2	Key, 1/4" sq. x 3-1/4" lg.
47	163281	1	Wrench-15/16" (Q.D. Bladeshaft)	92	047161	2	Bearing w/Grease Fitting
	043650	1	Wrench (STD Bladeshaft)	93	021415	2	Hex Head Capscrew, 1/2"-3 x 3-1/4" lg.
48	048510	1	Pin	94	020788	4	Lockwasher, split type, 1/2"
49	020339	6	Hex Head Capscrew, 1/2"-13 x 1"	95	021404	2	Hex Head Capscrew, 1/2"-13 x 3" lg.
50	020788	6	Lockwasher, split type, 1/2"	96	162065	2	Wheel w/Setscrew, 10" x 3" x 1-1/4" dia.
51	021423	2	Hex Head Capscrew, 1/4"-20 x 1/2" lg.	97	020531	4	Sq. Head Setscrew, 5/16"-18 x 1" lg.
52	046296	1	Brass Elbow				

FIGURE 2 - ENGINE & BLADE SHAFT GROUP

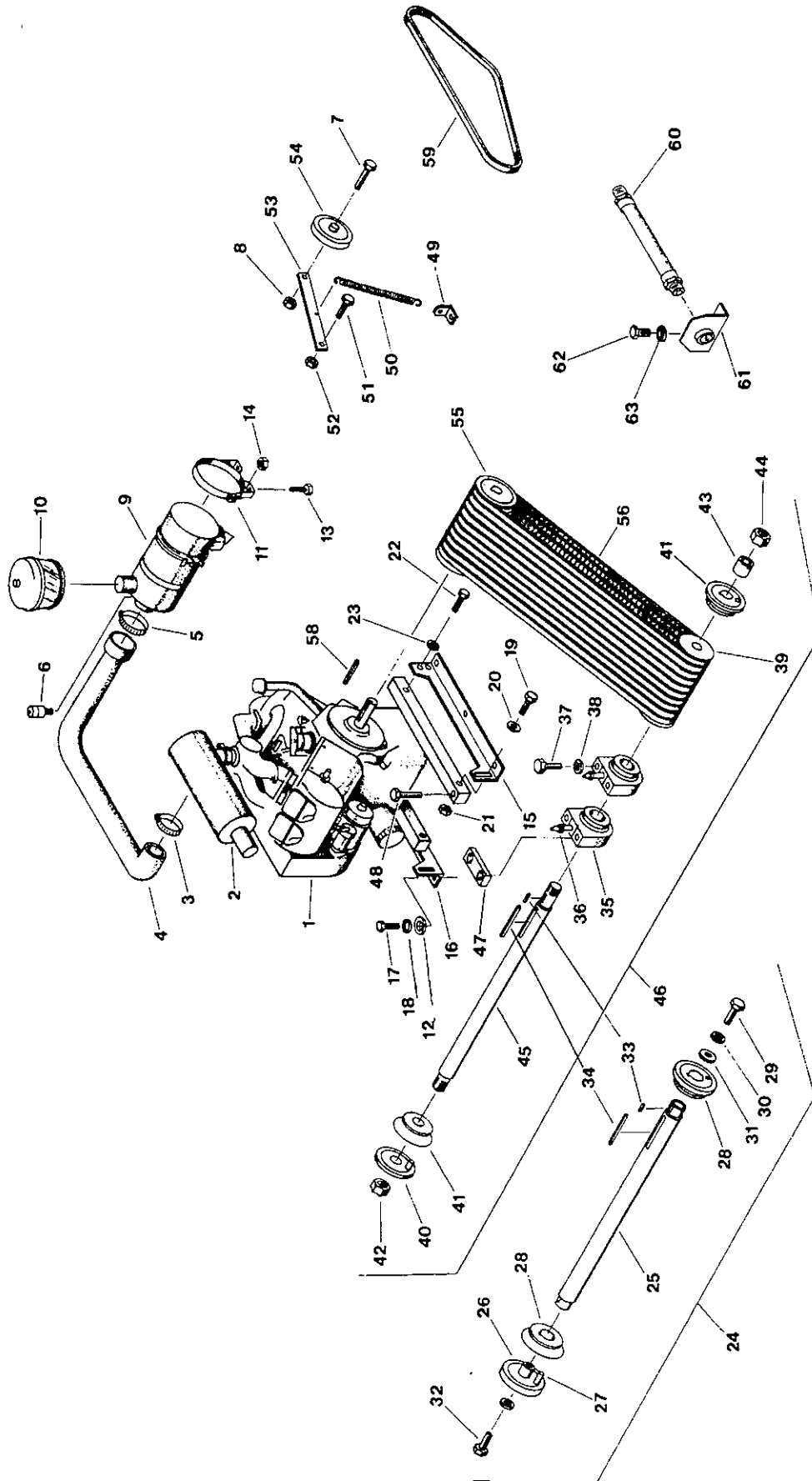


FIGURE 2 - PARTS LIST

DIAG LOC.	PART NO.	QTY. REQ.	DESCRIPTION (* Denotes Metric Item)	DIAG LOC.	PART NO.	QTY. REQ.	DESCRIPTION (* Denotes Metric Item)
1	166282	1	Engine	33	043054	2	Key, 1/4" sq. x 27/32" lg. Rd. End
	166323	1	Oil Filter	34	020076	1	Key, 3/8" sq. x 4" lg.
2	166322	1	Muffler	35	163137	2	Bearing, Roller 1-3/4" dia.
3	020050	1	Hose Clamp		160575	2	Bearing, Ball 1-3/4" dia.
4	163644	1	Hose, Air Intake	36	163140	2	Grease Fitting, 1/8 NPT x 2-5/8" (roller)
5	15700702	1	Hose Clamp	37	163136	4	Hex Head Capscrew, 5/8"-18 x 3" (roller)
6	163664	1	Indicator, Filter		163547	4	Hex Head Capscrew, 5/8"-18 x 3-1/2" (ball)
7	020380	1	Hex Head Capscrew, 3/8"-16 x 1-3/4" lg.	38	020790	4	Lockwasher, split 5/8"
8	020199	1	Locknut, fiber type, 3/8"-16	39	048067	1	Pulley w/Setscrew, 8 Gr. 3VX 4.12 OD 14" & 18"
9	163658	1	Air Cleaner Assy.		166304	1	Pulley w/Setscrew, 7 Gr. 3VX 4.75 OD 26" & 30"
	163659	1	Filter Element, primary	40	167367	1	Outer Flange w/Dowel Pin, 5" dia.
	163660	1	Filter Element, safety	41	167187	2	Inner Flange, 5" dia.
	015002	1	Rubber Dust Unloader	42	020017	1	Hex Nut, 1"-14 UNF LH Thread (right side)
10	15700704	1	Pre-Cleaner	43	043051	1	Thread Protector Sleeve
11	045631	2	Mounting Band	44	020018	1	Hex Nut, 1"-14 UNF RH Thread (left side)
12	020766	3	Flat Washer, 1/2"	45	047008	1	Blade Shaft, Standard
13	020313	4	Hex Head Capscrew, 5/16"-18 x 3/4" lg.	46	166318	1	Blade Shaft Assy., Standard, 14" & 18" (Incl. Items 33-45) w/Roller Bearing
14	020197	4	Lock Nut, fiber type, 5/16"-18		166319	1	Blade Shaft Assy., Standard, 26" & 30" (Incl. Items 33-45) w/Roller Bearing
15	163015	1	Bracket, Engine Base, left	47	047005	2	Spacer, Blade Shaft (ball bearing only)
16	166320	1	Bracket, Engine Base, right	48	020272	1	Belt Adjustment Bolt, full thread
17	020340	6	Hex Head Capscrew, 1/2"-13 x 1-1/4" lg.	49	163259	1	Clip, Idler Spring
18	020788	6	Lockwasher, split, 1/2"	50	163260	1	Spring, Idler
19	021431	2	Hex Head Capscrew, 5/8"-11 x 3" lg.	51	043452	1	Hex Head Capscrew, 3/8"-16 x 1-3/4" lg.
20	160393	2	Washer, 5/8" x 5/16" thick	52	020168	1	Hex Jam Nut, 3/8"-16
21	020204	2	Lock Nut, fiber type, 5/8"-11	53	043451	1	Idler Arm
22	15701291	2	Hex Head Capscrew, 5/8"-11 x 1-3/4" lg.	54	163714	1	Idler Pulley
23	020790	2	Lockwasher, split, 5/8"	55	166304	1	Pulley, Engine, 7 Gr. 3VX, 4.75 OD 14" & 18", w/Accessory Pulley
24	166316	1	Blade Shaft Assy. Quick Disconnect, 14", 18" (Incl. Items 25-39)		048072	1	Pulley w/Setscrew, 7 Gr. 3VX, 3.65 OD, 26" & 30" w/Accessory Pulley
	166317	1	Blade Shaft Assy. Quick Disconnect, 26", 30" (Incl. Items 25-39)	56	166305	1	V-Belt, set of 7, 3VX520, 14" & 18"
25	163098	1	Blade Shaft, Quick Disconnect		166306	1	V-Belt, set of 7, 3VX500, 26" & 30"
26	166307	1	Outer Flange w/Dowel Pin, Quick Disconnect 5" dia.	57	-----	--	-----
27	020304	1	Dowel Pin	58	020039	1	Key, Bevel End, 3/8" sq. x 4" lg.
28	166284	2	Inner Flange, Quick Disconnect, 5"	59	163790	1	V-Belt, Accessory, 3VX560
29	163487	1	Hex Head Capscrew, 5/8"-11 x 3-1/2" lg. Quick Disconnect R.H. Thread	60	166293	1	Hose, Oil Drain
30	020790	2	Lockwasher, split, 5/8", Quick Disconnect	61	163594	1	Bracket
31	020747	1	Flat Washer, 5/8", Quick Disconnect	62	020322	2	Hex Head Capscrew, 3/8"-16 x 3/4" lg.
32	163488	1	Hex Head Capscrew, 5/8"-11 x 3-1/2" lg. Quick Disconnect L.H. Thread	63	020786	2	Lockwasher, split type, 3/8"

FIGURE 3 - SELF-PROPELLING GROUP

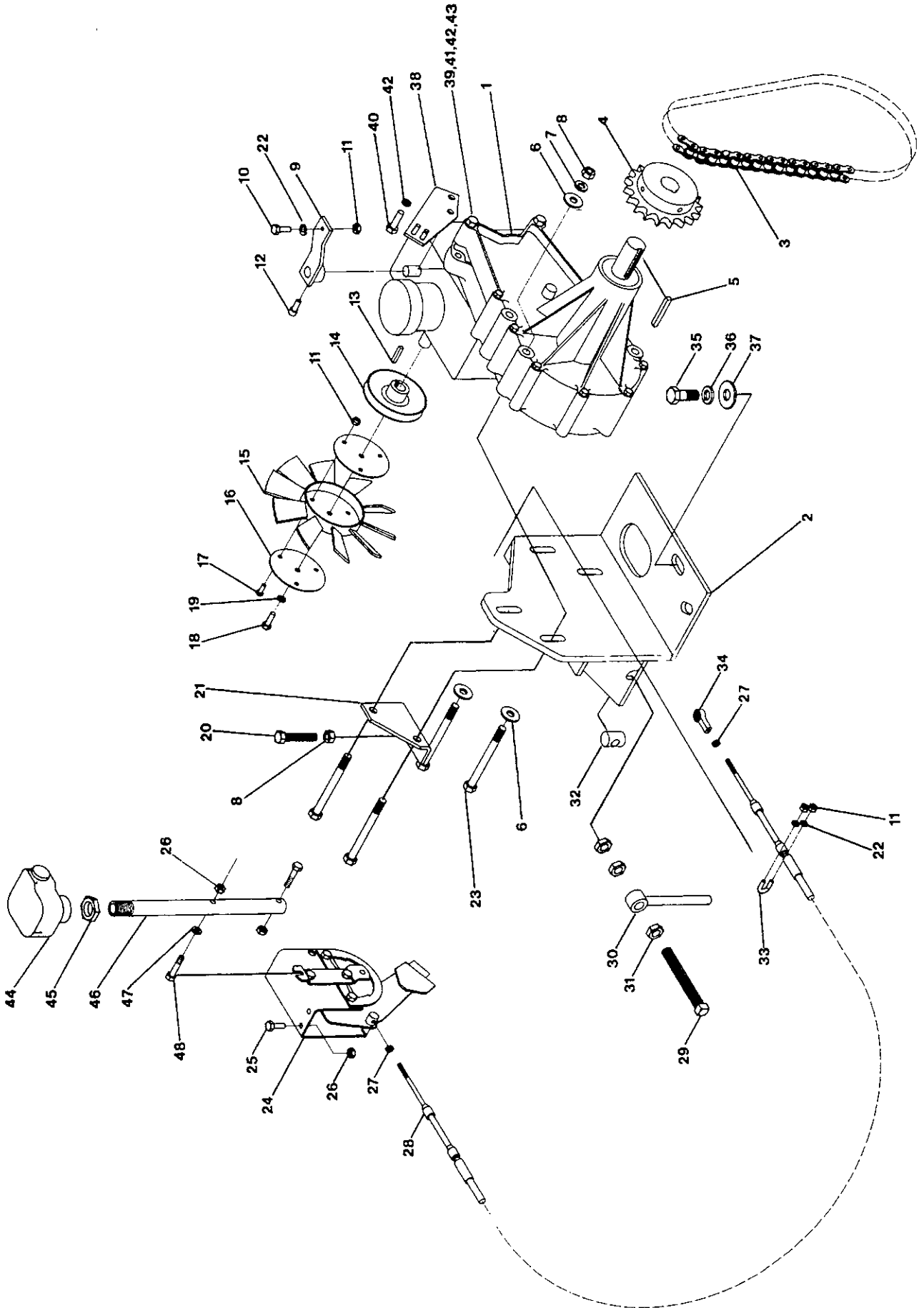


FIGURE 3 - PARTS LIST

DIAG LOC.	PART NO.	QTY. REQ.	DESCRIPTION (*Denotes Metric Item)	DIAG LOC.	PART NO.	QTY. REQ.	DESCRIPTION (* Denotes Metric Item)
1	163611	1	Transmission Assy.	24	166026	1	Speed Control Lever
	166203	1	Hydro Only	25	020370	4	Capscrew, Hex Hd 1/4"-20 x 3/4"
	166204	1	Transmission only (See Fig. 3A)	26	020195	6	Nut, Fiber Lock 1/4"-20
2	163978	1	Support	27	136685	2	Nut, Jam #10-32
3	163643	1	Chain, #50 x 60 Pitch w/Connector	28	164616	1	Cable, Speed Control
4	163728	1	Sprocket, w/Setscrew, 27 Tooth #50	29	020219	1	Setscrew, Sq Hd 1/2"-13 x 4"
5	163686	1	Key, 1/4 Sq x 1-3/4"	30	163132	1	Guide Pin
6	020743	6	Washer, Flat 3/8	31	020177	3	Nut, Hex Jam 1/2"-13
7	020786	4	Lock Washer 3/8	32	045071	1	Swivel
8	020136	5	Nut, Hex 3/8"-16	33	046195	1	Clamp, Cable
*9	167611	1	Lever, Control (Metric)	34	046591	1	Rod End, #10-32
10	020411	1	Machine Screw, Hex Hd #10-24 x 3/4"	35	020340	1	Capscrew, Hex Hd 1/2"-13 x 1-1/4"
11	020194	6	Nut, Fiber Lock #10-24	36	020788	1	Lock Washer 1/2
*12	173046	1	Capscrew, Socket Head, M6 x 1.0 x 20mm	37	020745	1	Washer, Flat 1/2
13	020060	1	Key, 3/16 Sq x 1"	38	163984	1	Bracket, Cable Support
14	166313	1	Pulley w/Setscrew	39	020374	1	Capscrew, Hex Hd 5/16"-18 x 3"
15	163105	1	Fan Blade	40	020313	1	Capscrew, Hex Hd 5/16"-18 x 3/4"
16	163040	2	Plate, Fan Attachment	41	020742	1	Washer, Flat 5/16
17	020430	3	Machine Screw, Hex Hd, #10-24 x 1/2"	42	020785	2	Lock Washer, 5/16
*18	163688	1	Capscrew Metric, Hex Hd, M6	43	020134	1	Nut, Hex 5/16"-18
*19	163689	1	Lock Washer, Metric M6	44	163948	1	Handle & Switch
20	020155	1	Setscrew, Sq Head 3/8"-16 x 2"	45	15700353	1	Nut, 3/4"-16
21	166020	1	Bracket, Adjustment	46	163946	1	Lever
22	020771	3	Washer, Flat #10	47	020762	1	Washer Flat 1/4
23	020334	4	Capscrew, Hex Hd 3/8"-16 x 4"	48	020372	2	Capscrew 1/4"-20 x 1-1/4"

FIGURE 3A - TRANSMISSION DETAIL

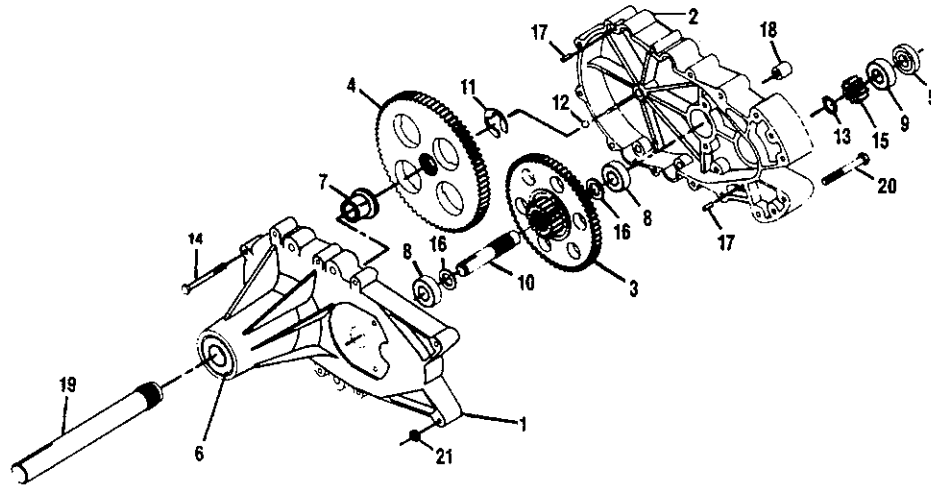


FIGURE 3A - DETAIL PARTS LIST FOR 166204

DIAG LOC.	PART NO.	QTY. REQ.	DESCRIPTION	DIAG LOC.	PART NO.	QTY. REQ.	DESCRIPTION
1	166101	1	Axle Carrier Housing	12	166112	1	Ball 3/8" Dia.
2	166102	1	Hydro Mount Housing	13	166113	1	Retaining Ring
3	166103	1	Splined Reduction Gear	14	166114	8	Capscrew, Hex Hd 1/4"-20 x 2 1/2"
4	166104	1	Splined 72 Tooth Final Drive Gear	15	166115	1	Gear, Input, 11 Tooth
5	166105	1	Bearing Spacer	16	166116	2	Washer, .62 ID x 1.0 OD x .05
6	166106	1	Ball Bearing, 52mm x 25mm x 15mm	17	166117	2	Pin, Spring, 3/16" x 1/2"
7	166107	1	Flanged Bearing	18	166118	2	Spacer, Mounting
8	166108	2	Ball Bearing, .62ID x 1.38 x .44	19	166119	1	Axle Shaft, Straight
9	166109	1	Ball Bearing, 15mm x 35mm x 11mm	20	020374	2	Capscrew, Hex Hd 5/16"-18 x 3"
10	166110	1	Brake Shaft, Splined	21	020134	2	Nut, 5/16"-18
11	166111	1	"E" Ring				

FIGURE 4 - BOLT-ON BLADE GUARD

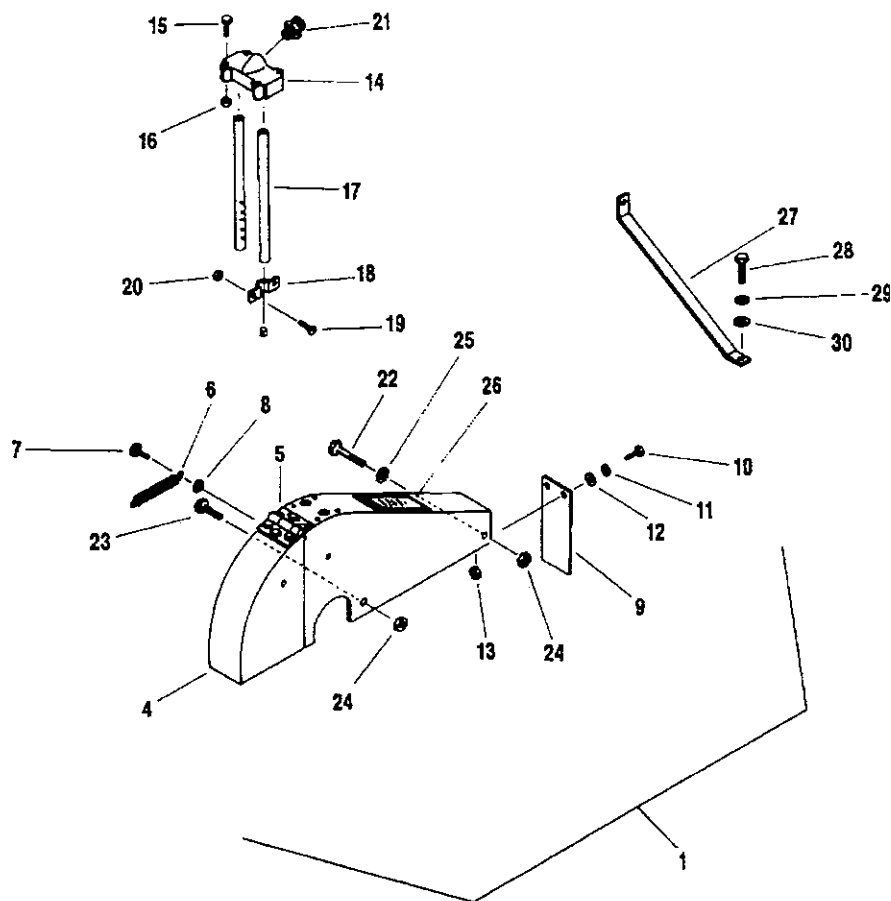


FIGURE 4 - PARTS LIST

DIAG LOC.	PART NO.	QTY. REQ.	DESCRIPTION (*Denotes Metric Item)	DIAG LOC.	PART NO.	QTY. REQ.	DESCRIPTION (*Denotes Metric Item)
*1	174272	1	Kit, 14" Blade Guard-Complete (Incl Items 4-26)	*16	139745	4	Locknut, M6 x 1.0 (Fiber Lock)
*	174273	1	Kit, 18" Blade Guard-Complete (Incl Items 4-26)	17	161003	2	Water Tube w/ Pipe Plug-14"
*	167475	1	26" Blade Guard-Complete (Incl Items 4-26)		161004	2	Water Tube w/ Pipe Plug-18"
*	167476	1	30" Blade Guard-Complete (Incl Items 4-26)		161005	2	Water Tube w/ Pipe Plug-26"
2	-----	---	-----		161006	2	Water Tube w/ Pipe Plug-30"
3	-----	---	-----	18	049212	2	Clamp, Water Tube
4	160877	1	Guard, Front only, 14"	*19	139760	4	Screw, Flat Hd M6 x 1.0 x 20mm
	160523	1	Guard, Front only, 18"	*20	139745	4	Locknut, M6 x 1.0 (Fiber Lock)
	049185	1	Guard, Front only, 26"	21	040275	1	Hose Adaptor
	160526	1	Guard, Front only, 30"	22	020352	1	Capscrew, Hex Hd 1/2"-13 x 5 (14" & 18" Gd. Only)
5	049154	1	Hinge	*	167532	1	Capscrew, Hex Hd M12 x 1.75 x 130mm
*5A	167478	6	Capscrew, Hex Hd M8 x 1.25 x 25mm (Full Thd)	*23	139751	1	Capscrew, Hex Hd M12 x 1.75 x 25mm
*5B	173059	6	Washer, Flat M8	24	020201	1	Locknut, 1/2"-13 (Fiber Lock (14" & 18" Gd. Only)
*5C	139738	6	Locknut, M8 x 1.25 (Fiber Lock)	*	139742	2	Locknut, M12 x 1.75 (Fiber Lock)
6	043145	1	Spring	25	020788	1	Lockwasher, 1/2"
*7	139761	2	Capscrew, Hex Hd M6 x 1.0 x 20mm	26	046128	1	Decal, Caution
*8	172017	4	Nut, Std Hex, M6 x 1.0	27	163537	1	Brace, Blade Guard (26")
9	163275	1	Guard, Splash		163540	1	Brace, Blade Guard (30" & 36")
*10	020370	2	Capscrew, Hex Hd M6 x 1.0 x 20mm	*28	139749	1	Capscrew, Hex Hd M10 x 1.5 x 25mm
*11	020784	2	Lockwasher, M6	*29	162004	1	Lockwasher, M10
*12	020741	2	Washer, Flat M6	*30	173014	1	Washer, Flat M10
13	-----	---	-----				
14	049196	1	Manifold, Water				
*15	167551	4	Capscrew, Hex Hd M6 x 1.0 x 40mm				

FIGURE 5 - SLIP-ON BLADE GUARD

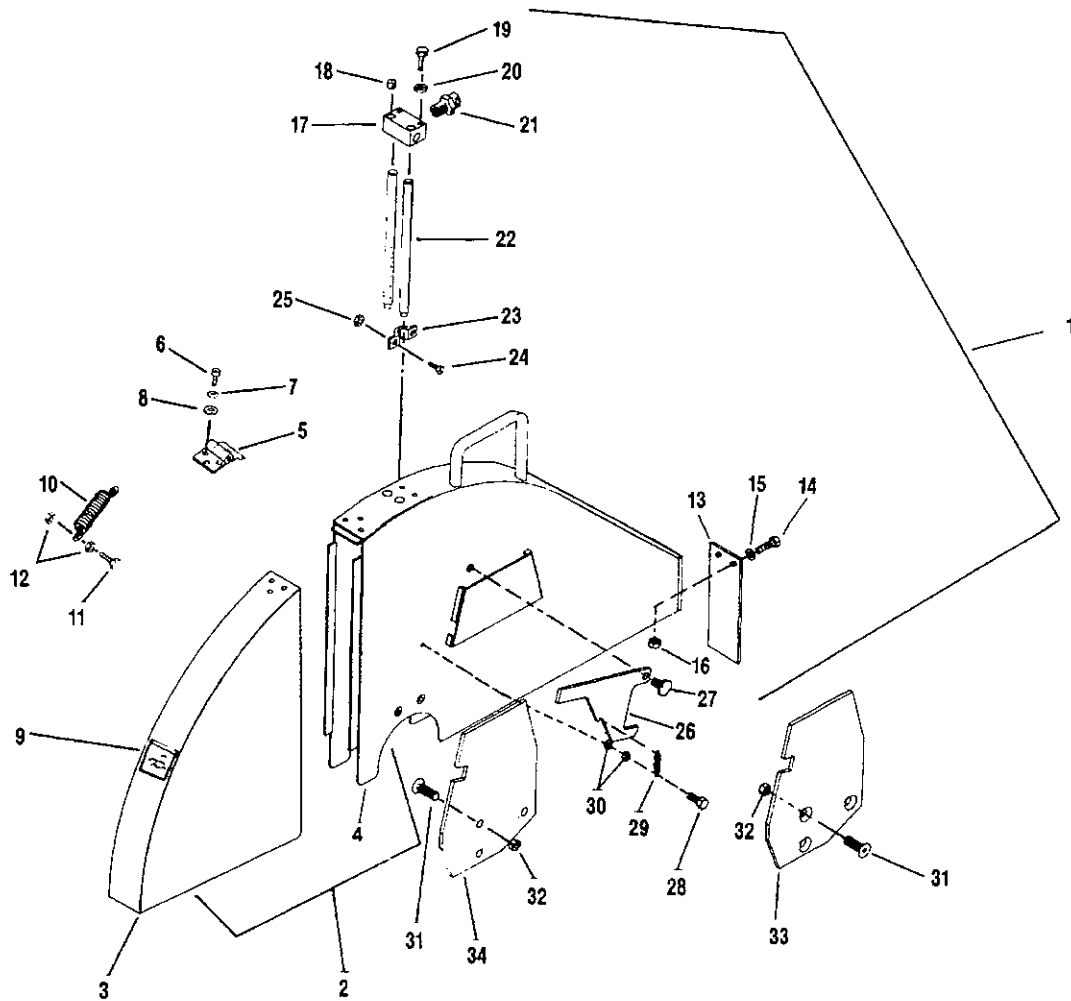


FIGURE 5 - PARTS LIST

DIAG LOC.	PART NO.	QTY. REQ.	DESCRIPTION (*Denotes Metric Item)	DIAG LOC.	PART NO.	QTY. REQ.	DESCRIPTION (*Denotes Metric Item)
*1	167492	1	Blade Guard-14"(Includes Items 3, 5-30)	*20	163689	2	Lockwasher, M6
*	167495	1	Blade Guard-18"(Includes Items 3, 5-30)	21	040275	1	Adapter 3/8" NPT x 3/4" Male Garden Hose
*	167498	1	Blade Guard-26"(Includes Items 3, 5-30)	22	164449	2	Water Tube-14"
*3	174050	1	Kit, Front Guard Weldment-14" (Incl. 5-9, 36)		163394	2	Water Tube-18"
*	174051	1	Kit, Front Guard Weldment-18" (Incl. 5-9, 36)		163427	2	Water Tube-26"
*	174052	1	Kit, Front Guard Weldment-26" (Incl. 5-9, 36)	23	163395	2	Clamp, Water Tube
5	167824	1	Hinge	*24	167818	4	Screw, Flat Hd M6 x 1.0 x 16mm
*6	139737	6	Capscrew, Hex Hd M8 x 1.25 x 20mm	*25	139745	4	Locknut, M6 x 1.0 (Fiber Lock)
*7	173019	6	Lockwasher, M8	26	165986	2	Latch
*8	173059	6	Washer, Flat M8	*27	167503	2	Bolt, Pivot M8 x 1.25 (Special)
9	046128	1	Decal, Caution	*28	167761	2	Capscrew, Hex Hd M5 x 0.8 x 20mm
10	043145	1	Spring	29	163188	2	Spring
*11	139761	2	Capscrew, Hex Hd M6 x 1.0 x 20mm	*30	172011	2	Nut, Hex M5 x 0.8
*12	172017	4	Nut, Std Hex, M6 x 1.0	*31	167491	6	Capscrew, CounterSunk Hd M10 x 1.5 x 25mm
13	163389	1	Guard, Splash	*32	139748	5	Locknut, Hex M10 x 1.5 (Fiber Lock)
*14	139761	2	Capscrew, Hex Hd M6 x 1.0 x 20mm	*33	174053	1	Kit, LH Spade (Metric) (Incl. Items 31, 32, 36)
*15	139746	2	Washer, Flat M6	*34	174054	1	Kit, RH Spade (Metric) (Incl. Items 31, 32, 36)
*16	139745	2	Locknut, M6 x 1.0 (Fiber Lock)	*35	167624	1	14" Kit-Slip On Blade Guard (Field Installed)
17	163388	1	Manifold	*	167625	1	18" Kit-Slip On Blade Guard (Field Installed)
18	020864	2	Plug, 1/8 NPT, Socket Hd, Brass	*	167626	1	26" Kit-Slip On Blade Guard (Field Installed)
*19	139759	2	Capscrew, Hex Hd M6 x 1.0 x 45mm	36	0A7665	1	Instruction Sheet

FIGURE 6 - LIFT ASSEMBLY

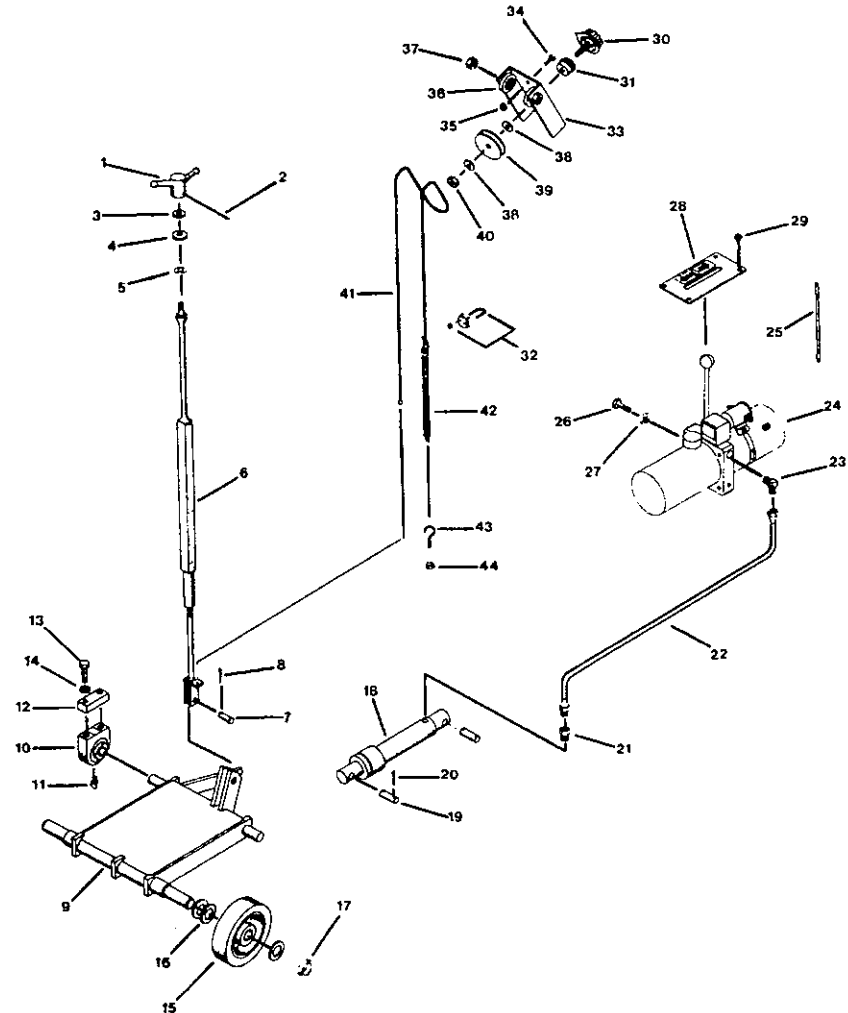


FIGURE 6 - PARTS LIST

DIAG LOC.	PART NO.	QTY. REQ.	DESCRIPTION (*Denotes Metric Item)	DIAG LOC.	PART NO.	QTY. REQ.	DESCRIPTION (*Denotes Metric Item)
1	047591	1	Handle	24	166125	1	Hydraulic Pump
2	020641	1	Pin, Roll 3/16" x 1 1/4" Long	25	048542	1	Battery Cable, pos.
3	020745	1	Washer, Flat 1/2"	139260		1	Battery Cable, neg.
4	046424	1	Washer, Fiber	*26	173005	3	Capscrew, Hex Hd M10 x 1.5 x 16mm
5	046425	1	Washer, Bowed	*27	162004	3	Lockwasher, split, M10
6	163238	1	Stem Assy	28	166083	1	Cover Plate, w/Decal
7	160164	1	Pin, Pivot	163719		1	Decal, Raise/Lower
8	020612	1	Cotter Pin 3/32" x 3/4"	29	020587	4	Screw, self-tapping, #10-24 x 3/8"
9	163605	1	Front Axle Assembly	30	163261	1	Pointer Knob
10	047161	2	Bearing, 1-1/4"	31	043696	1	Bearing
11	041175	2	Fitting, Grease	32	043698	1	Cable Clamp
12	163044	2	Riser Block	33	043711	1	Bracket, Mounting
13	020351	4	Capscrew, Hex Hd 1/2"-13 x 4-1/2" lg.	34	020602	2	Machine Screw, #10-24, 1/2" Pan Head
14	020788	4	Lockwasher, split, 1/2"	35	020194	2	Lock Nut, fiber type, #10-24
15	047150	2	Wheel, 8" x 2-1/2" x 1"	36	030822	2	Pulley & Bearing
	047152	2	Seal & Bearing Kit	37	032366	2	Locknut, 5/16"-18 KEPS
16	020751	6	Flat Washer, 1"	38	020763	2	Washer, Flat SAE 5/16"
17	048078	2	Collar, Set, 1" (Includes Item 17A)	39	043694	1	Plastic Cable Pulley
18	048310	1	Hydraulic Cylinder	40	020197	1	Locknut, 5/16-18 (Fiber Lock)
19	048321	2	Pin, Hydraulic Cylinder	41	163228	1	Cable Assy.
20	020622	4	Cotter Pin, 3/16" x 2"	42	163168	1	Spring
21	163610	1	Fitting, Adaptor, 3/8 Pipe, 1/4 Tube	43	020250	1	Eye Bolt, 1/4"-20
22	163642	1	Hose Assembly, 36" lg.	44	020133	1	Nut, Hex Jam, 1/4"-20
23	163035	1	Fitting, Elbow 90°, 1/4 Tube, 3/8 O-Ring				

FIGURE 7 - HYDRAULIC PUMP GROUP

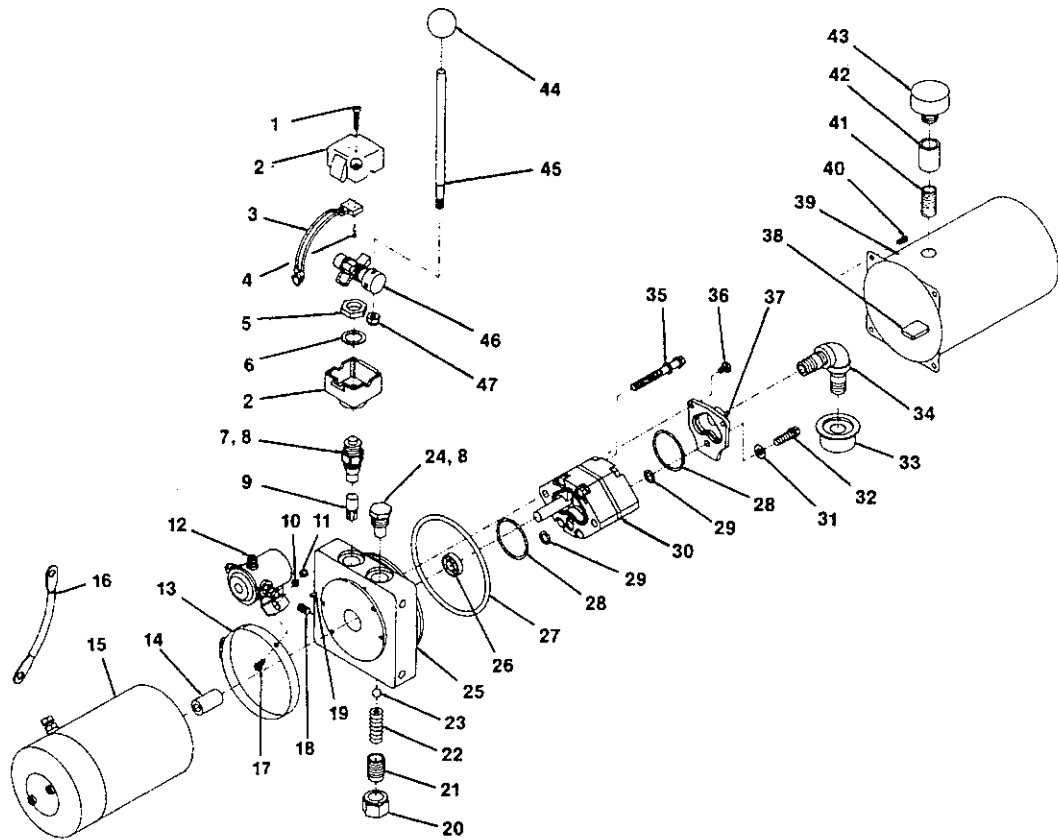


FIGURE 7 - PARTS LIST FOR 166125

DIAG LOC.	PART NO.	QTY. REQ.	DESCRIPTION (*Denotes Metric Item)	DIAG LOC.	PART NO.	QTY. REQ.	DESCRIPTION (*Denotes Metric Item)
1	166260	2	Screw, SHCS #10-32 x 1" Lg	29	166263	2	O-Ring
2	166261	1	Bracket, Release	30	166242	1	Pump Assy
3	166338	1	Switch, Electric (Sealed)	31	166232	1	Washer, 0.338 x 0.625 x 0.60
4	166259	2	Screw, #2-56 x 3/8" Lg	32	166236	1	Bolt, 5/16"-18 x 1" Torx
5	166265	1	Nut, Jam 3/4"-16 1/4" Thick	33	048213	1	Filter, Inlet Screen
6	166266	1	Washer, Internal Tooth	34	166244	1	Plumbing Assy. Inlet
7	166245	1	Valve, Cartridge, Release	35	166228	2	Bolt, 5/16"-24 x 2.75" Torx
8	045659	2	O-Ring	36	166234	2	Screw, M6 x 1.0 x 12 mm Taptite
9	166239	1	Valve, Flo-Control .5 GPM	37	166233	1	Cover, Suction 3/8 NPT
10	020740	2	Washer, .211 x .560 x .03	38	163327	1	Magnet
11	020132	2	Nut, #10-24	39	166243	1	Reservoir
12	166121	1	Solenoid	40	166238	4	Screw, #12-24 x .29 Hex Washer Hd
13	166262	1	Clamp, Hose	41	166098	1	Nipple, Close 3/8 NPT
14	166229	1	Coupling, Drive	42	020847	1	Coupling, 3/8 NPT
15	048205	1	Motor, 12V DC	43	043871	1	Breather, 3/8 NPT
16	163344	1	Cable, Motor	44	166255	1	Knob
17	020462	2	Screw, Pan Hd #10-24 x 1/2" Lg	45	166257	1	Handle
18	170569	1	Plug, 1/16 NPT	46	166337	1	Cam & Shaft Assy. (includes 46A-26H)
19	045664	1	Pin, 1/8 x 1/4	46A	166247	1	Pin, roll .156 Dia. x 5/8" Lg.
20	048297	1	Relief Cap Assy (w/ O-Ring)	46B	166248	2	E-Series Circlip
21	048202	1	Screw, Adjustment	46C	166249	1	Pin, Roll .156 Dia. x 7/8" Lg
22	166237	1	Spring	46D	166250	1	Pin, Roll .156 Dia. x 1 3/8" Lg
23	166230	1	Ball, 3/8" Steel	46E	166251	1	Spring, Torsion
24	166235	1	Valve, Cartridge, Check	46F	166252	1	Cam
25	166241	1	Endhead	46G	166253	1	Camshaft
26	166231	1	Seal, Shaft	46H	166254	2	Bushing
27	166240	1	O-Ring	47	166256	1	Locknut, 5/16"-24
28	166264	2	O-Ring				

FIGURE 8 - INSTRUMENT & CONTROL PANEL GROUP

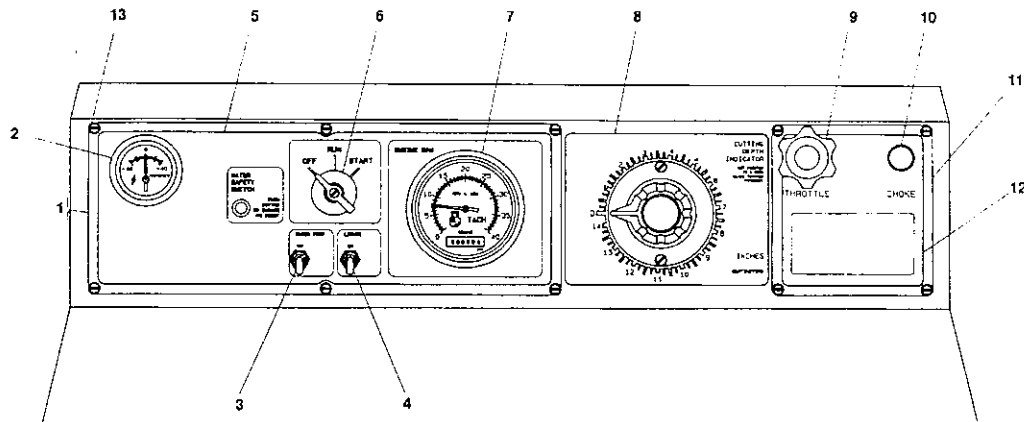


FIGURE 8 - PARTS LIST

DIAG LOC.	PART NO.	QTY. REQ.	DESCRIPTION (*Denotes Metric Item)	DIAG LOC.	PART NO.	QTY. REQ.	DESCRIPTION (*Denotes Metric Item)
	166310	1	Panel Assy. (Incl. Items 1-7 and 166294)	8	163694	1	Decal, Depth Indicator
1	166291	1	Panel, Gauge	9	160467	1	Throttle Cable
2	163666	1	Gauge, Ammeter	10	160409	1	Choke Cable
3	052120	1	Switch, Water Pump	11	163670	1	Panel, Dash Cover
4	052120	1	Switch, Lights	12	163695	1	Decal, Throttle and Choke
5	166290	1	Decal, Instrument Panel	13	020537	10	Screw, Self-Tapping, #10-24 x 3/4" lg.
6	046360	1	Switch, Ignition		166294	1	Wiring Harness, Instrument (not shown)
7	163665	1	Gauge, Tach/Hour Meter		166295	1	Wiring Harness, Engine (not shown)

FIGURE 9 - WATER PUMP KIT GROUP

WATER PUMP KIT COMPLETE
(METRIC/ENGLISH) P/N 167554

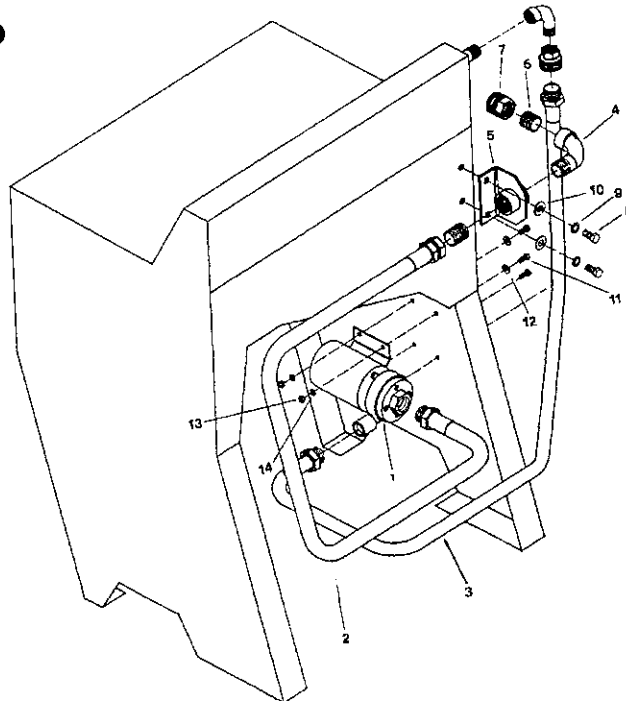


FIGURE 9 - PARTS LIST

DIAG LOC.	PART NO.	QTY. REQ.	DESCRIPTION (*Denotes Metric Item)	DIAG LOC.	PART NO.	QTY. REQ.	DESCRIPTION (*Denotes Metric Item)
1	164977	1	Water Pump With Wire Terminal	6	020296	2	Fitting, Nipple-Close 3/4" NPT
	-----	-	Replacement Water Pump Parts:	7	045643	1	Swivel, With Filter (Includes Items 7A-7B)
	164083	1	Motor, Impeller, Gasket & Seal	7A	040271	1	Swivel, Without Filter
	164580	1	Seal And Gasket Kit	7B	045640	1	Washer, Filter
	164578	1	Gasket Only	*8	139744	2	Capscrew, Hex Hd M10 x 1.5 x 20mm
	164579	1	Seal Only		020322	2	Hex Hd Capscrew, 3/8"-16 x 3/4
	164581	1	Impeller Only	*9	162004	2	Lockwasher, M10 (Split Type)
	164582	1	Motor Only	*10	173014	2	Washer, Flat M10
2	163770	1	Hose Assy, 3/4" Dia. (Inlet)	*11	139761	4	Capscrew, Hex Hd M6 x 1.0 x 20mm
3	163769	1	Hose Assy, 1/2" Dia. (Outlet)	*12	139746	4	Washer, Flat M6
4	040273	2	Fitting, 90° Street Elbow, 3/4" NPT	*13	139745	4	Locknut, M6 x 1.0 (Fiber Lock)
5	163594	1	Bracket, Water Pump	14	020762	4	Washer, Flat 1/4" SAE

FIGURE 10 - ELECTRICAL DIAGRAM

SWITCH POSITION: Off - D to Ground
 Run - O to D
 C to B
 Start - C to B to S

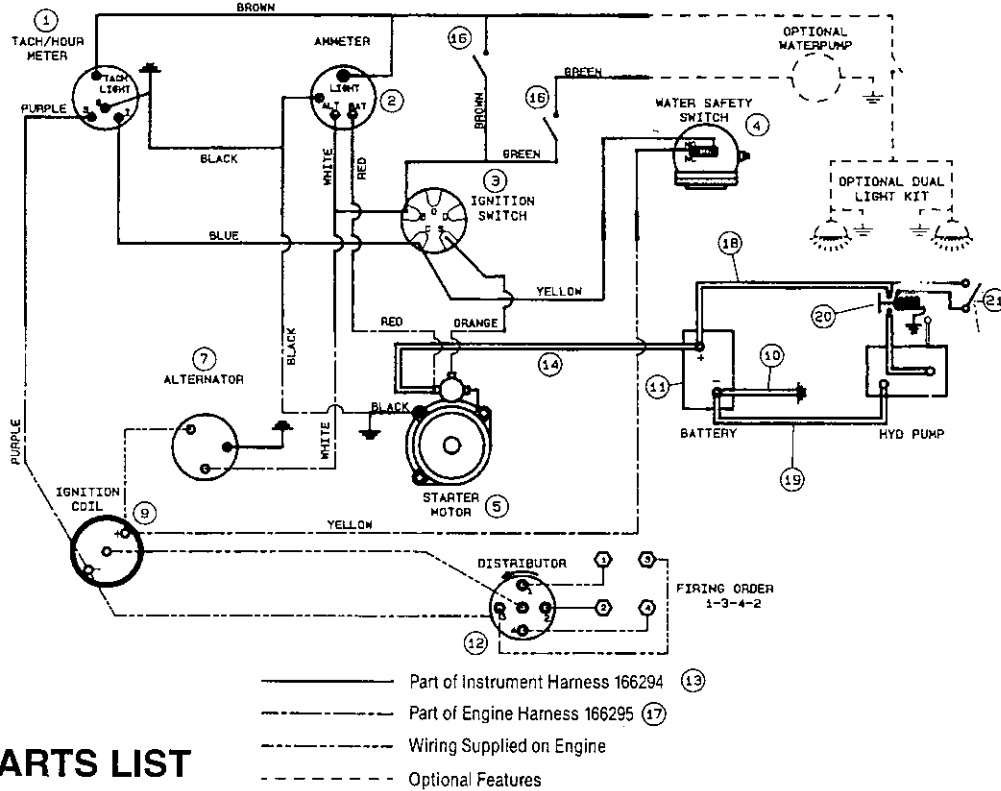


FIGURE 10 - PARTS LIST

DIAG LOC.	PART NO.	QTY. REQ.	DESCRIPTION (*Denotes Metric Item)	DIAG LOC.	PART NO.	QTY. REQ.	DESCRIPTION (*Denotes Metric Item)
1	163665	1	Gauge, Tachometer/Hour Meter	13	166061	1	Wiring Harness, Instrument
2	163666	1	Gauge, Ammeter(40 AMP)	14	163180	1	Cable, Battery, Positive
3	046360	1	Switch, Ignition (Wisconsin # YC27BS1)	--	-----	--	-----
4	047136	1	Switch, Water Safety	16	052120	2	Switch, Water Pump & Lights
5	-----	1	Starter & Solenoid (Wisconsin # YA53A)	17	166062	1	Wiring Harness, Engine
7	-----	1	Alternator, 12V	18	048542	1	Cable, Battery, Positive(To Hydraulic Pump)
9	-----	1	Coil, Ignition (Wisconsin # YF38B)	19	139260	1	Cable, Battery, Negative (To Hydraulic Pump)
10	163179	1	Cable, Battery, Negative	20	166121	1	Solenoid
11	163121	1	Battery, 12V	21	166258	1	Switch, Electric
12	-----	1	Distributor, Electronic (Wisconsin # YF50AS1)				

FIGURE 11 - LIGHT ASSEMBLY KIT COMPLETE (METRIC/ENGLISH) P/N 167656

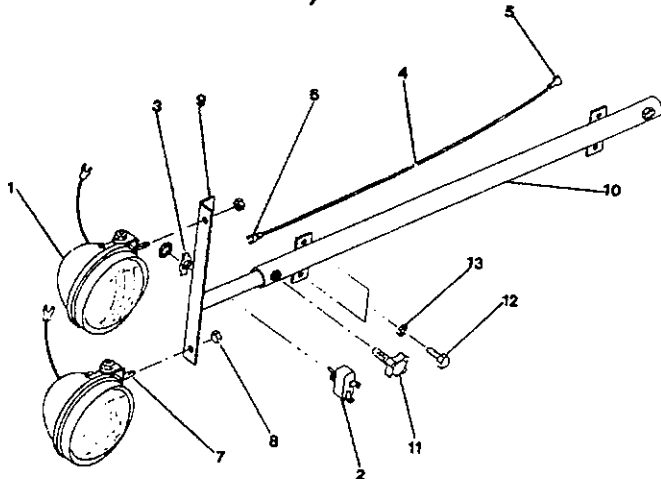


FIGURE 11 - PARTS LIST

DIAG LOC.	PART NO.	QTY. REQ.	DESCRIPTION (*Denotes Metric Item)
1	0499919	2	Light
2	052120	1	Switch
3	090552	1	Plate, Switch
4	0499925	1	Wire, 16 GA x 36"
5	164370	1	Terminal, Male
6	046440	3	Terminal
*7	139737	2	Capscrew, Hex Hd M8 x 1.25 x 20mm Long
*8	139738	2	Locknut, Hex M8 x 1.25 (Fiber Lock)
9	163758	1	Bar, Support
10	163754	1	Tube, Support
11	166038	1	Knob, 3/8"-16 UNC Thread
*12	139761	4	Capscrew, Hex Hd M6 x 1.0 x 20mm Long
	020370	4	Hex Hd Capscrew, 1/4"-20 x 3/4
*13	163689	4	Lockwasher, M6 (Split Type)

SPECIAL INSTRUCTIONS

FOR CHANGING BLADE SPEEDS ON CONCRETE/ASPHALT SAWS • PRO 40 II

CAUTION Do not exceed blade shaft speed shown for each blade size. Excessive blade speed could result in blade breakage and serious personal injury.
As shown on the chart, some blade guards accept more than one size blades.

BLADE SIZE	BLADE SHAFT		ENGINE SPEED			GOVERNOR LEVER
	LOADED RPM	PULLEY SIZE	LOADED RPM	PULLEY SIZE	MAXIMUM RPM	HOLE NO.
14"	2750	4.12"	2400	4.75"	2550	11
18"	2750	4.12"	2400	4.75"	2550	11
26"	1850	4.75"	2400	3.65"	2550	11
30"	1700	4.75"	2200	3.65"	2350	10

CAUTION When changing blade size on Model Pro 40 II use this table to select the components that must be changed.

MODEL PRO 40 II	14"	18"	26"	30"
BLADE GUARD (SLIP ON)	167470	167471	167472	N/A
BLADE GUARD (WIDE)	174287	174288	167475	167676
BLADE SHAFT PULLEY	048067	048067	166304	166304
ENGINE PULLEY	166304	166304	048072	048072
DRIVE BELTS, SET OF 7	166305	166305	166306	166306
MFG P/N	3VX520	3VX520	3VX500	3VX500
ACCESSORY BELT	163790	163790	163790	163790
MFG P/N	3VX560	3VX560	3VX560	3VX560
BEARING ASSY., ROLLER	163135	163135	163135	163135
BEARING ASSY., BALL	163546	163546	163546	163546
BLADE SHAFT WITH FLANGES QD 5"	166298	166298	166298	166298
INNER FLANGE QD 5"	166284	166284	166284	166284
OUTER FLANGE W/PIN QD 5"	166307	166307	166307	166307
BLADESHAFT W/FLANGES 5"	166299	166299	166299	166299
INNER FLANGE STD 5"	167187	167187	167187	167187
OUTER FLANGE W/PIN STD 5"	167367	167367	167367	167367

Maximum Blade Capacity and Cutting Depths

Blade Size	Depth of Cut Up To
14"	4-1/2"
18"	6-1/2"
24"	9-1/2"
26"	10-1/2"
30"	12-1/2"

Never use a larger diameter blade than necessary to cut to a specific depth.

For maximum safety and economy, *always* use the proper pulleys and engine speeds for the diameter blade being used. See the chart for correct engine and blade shaft speeds.

SAFETY WARNINGS WHEN OPERATING SAW

DO

- DO** read and understand the instructions before operating the saw.
- DO** always keep guards in place.
- DO** always wear safety approved hearing, eye, head and respiratory protection.
- DO** keep all parts of your body away from the blade and all other moving parts.
- DO** know how to stop the saw quickly in case of an emergency.
- DO** shut off the engine and allow it to cool before refueling.
- DO** inspect the blade, flanges, and shafts for damage before installing the blade.
- DO** use only reinforced abrasive blades or steel center diamond blades manufactured for use on concrete saws.
- DO** use only blades marked with a maximum operating speed greater than blade shaft speed.
- DO** use caution and follow the instructions when loading and unloading the saw.

DO NOT

- DO NOT** use an abrasive blade that has been dropped.
- DO NOT** allow other persons to be near the saw when starting, refueling, or when cutting.
- DO NOT** operate a gasoline engine in an enclosed area unless it is properly vented.
- DO NOT** use damaged equipment or blades.
- DO NOT** operate the saw in areas of combustible material. Sparks from the saw could cause a fire or an explosion.
- DO NOT** allow blade exposure from the guard to be over 180 degrees.
- DO NOT** leave the saw unattended with the engine running.
- DO NOT** operate the saw while under the influence of drugs or alcohol.

FAILURE TO COMPLY WITH ABOVE WARNINGS COULD RESULT IN SERIOUS BODILY INJURY