



9 V RP 300 Art. 7836  
WLP 300 S Art. 7839  
WLP 300 B Art. 7840

**D Gebrauchsanweisung**

Zimmerbrunnenpumpe / Wasserlichtspiel-Pumpe 9 V

---

**GB Operating Instructions**

Indoor Fountain Pump / Water Light Jet Pump 9 V

---

**F Mode d'emploi**

Pompe pour fontaines d'intérieur / Pompe pour jets d'eau avec éclairage 9 V

---

**NL Gebruiksaanwijzing**

Binnenshuis-fonteinpomp / Water-/lichtspelpomp 9 V

---

**S Bruksanvisning**

Pump för inomhusfontän / Fontän Pump med lampa 9 V

---

**I Istruzioni per l'uso**

Pompa per fontana da interni / Pompa per gioco di acqua e luce 9 V

---

**E Manual de instrucciones**

Bomba para fuentes interiores / Bomba para juego de agua con luz 9 V

---

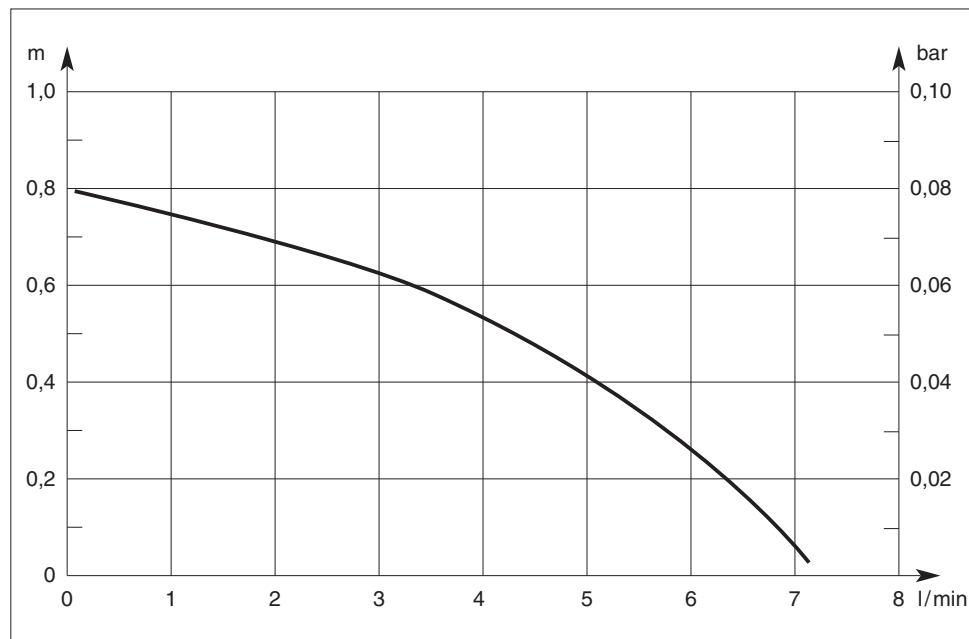
**P Instruções de manejo**

Bomba para fontes interiores / Bomba para jactos de água luminosos 9 V

---

**DK Brugsanvisning**

Springvandspumpe indendørs/terrasse / Springvandspumpe med lys 9 V





# GARDENA Indoor Fountain Pump RP 300, 9 V Water Light Jet Pump WLP 300 S / WLP 300 B

Welcome to GARDENA aquamotion ...



Please read these operating instructions carefully and observe the notes given. Use the instructions to familiarise yourself with the equipment, the operating controls, their correct use, and the notes on safety.

⚠ For safety reasons, children under 16 as well as persons not familiar with these operating instructions should not use this pump.

Keep these operating instructions in a safe place.

## The Applications Range of your Pump

### *Intended purpose*

GARDENA Indoor Fountain Pumps and Water Light Jet Pumps have been designed for private use around your house. They are not designed for operating watering tools and systems. The pumps are designed for indoor use only.



### *Attention*

⚠ GARDENA Indoor Fountain Pumps and Water Light Jet Pumps have not been designed for constant use in the industrial sector. Corrosive, easily combustible, aggressive or explosive substances (e.g. petrol, petroleum, nitro thinner) as well as salt-water or food / drinking water must not be pumped.

## ⚠ For Your Safety

### *Operating the Pump*

The transformer should be operated via a residual current device with a residual current rating of  $\leq 30$  mA (DIN VDE 0100-702 and 0100-738). Please ask your electrician for his advice.

### *Mains power cables*

Mains power cables should not have a smaller cross-section than a PVC cable of the designation H03 VV. Extension cables must meet the requirements of DIN VDE 0620.

### *Visual check*

Before operating the pump, look to see if there is any damage of the pump. A damaged pump must not be used. In case of damage, please have the pump checked by our GARDENA Service Centre or by an authorised electrician.

**Check line voltage**

Check line voltage. Data indicated on the type plate must match technical data of the mains supply.

**Do not operate pump when people are in water**

The pump must not be operated when there are people in the water.

**Do not use power cable to carry the pump**

Do not use the power cable to carry the pump or to pull the plug. Protect the power cable from heat, oil and sharp edges.

**Disconnect plug**

Please unplug the pump after operation and before carrying out any maintenance works.

**Temperature of the liquid used**

The temperature of the liquid used must not be below 4 °C or above 35 °C.

**Wear and reduced output**

Sand and other abrasive substances in the liquid cause increased wear and reduce the output of the pump.

**Caution!  
9 V low voltage**

GARDENA pumps and plug connections have been designed exclusively for the use with 9 V low voltage. When connected to 230 V your life is at risk! Operate the pump only with the delivered transformer.

**Do not expose the transformer to sunlight**

Do not expose the transformer to direct sunlight.

## Operation

---

**Installing the pump**

Before operation submerge the pump in the water. Take care that the pump is positioned in a way that the casing is completely immersed in water.

**⚠** The foam filter at the bottom must not be covered up at the side!

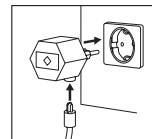
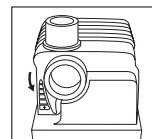
**Caution: Submersion depth**

Please note the maximum submersion depth (see "Technical Data").

**Switching on the pump**

Put the plug of the pump into the socket of the mains plug and then the mains plug into a 230 V AC socket.

**Caution!** Pump will start immediately.

**Volume regulator**

Adjust the volume according to your needs by turning the volume control. (→ Turning anti-clockwise increases the volume)



### Avoid dry operation

Avoid dry operation of the pump as dry running will produce undesirable heat and destroy the pump.

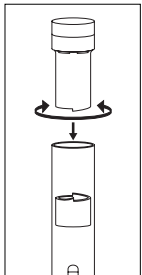
*Only for WLP 300 S and WLP 300 B*

## Control/Setting of the Light Effect Jets

### Water jet (WLP 300 S)

The light effects can be controlled with the volume control of the pump (→ see "Operation").

### Light sphere (WLP 300 B)

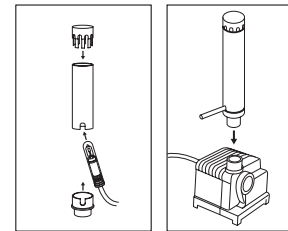


- Smaller diameters of light sphere:  
Turn the light effect control anti-clockwise upwards
- Bigger diameters of light sphere:  
Turn the light effect control clockwise downwards.



## Dismantling of the Light Effect Jets

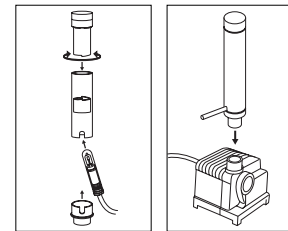
### Water jet (WLP 300 S)



- Disconnect plug transformer!
- Remove the jet from the pump.
- Pull off the top section of the jet of the light base.
- Pull out the lamp.
- Assemble the components in reverse order of the dismantling.  
→ While assembling take care that the cable of the lamp is correctly inserted into the side slot!

Only 12 V halogen lamps of max. 5 watts may be used!

### Light sphere (WLP 300 B)



- Disconnect plug transformer!
- Take the jet out of the pump.
- Unscrew the jet from the light base.
- Pull off the bottom section of the light base.
- Pull out the lamp.
- Assemble the components in reverse order of the dismantling.  
→ While assembling take care that the cable of the lamp is correctly inserted into the side slot!

Only 12 V halogen lamps of max. 5 watts may be used!

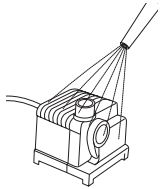
## Care Instructions

Take care that the pump is always completely submerged in water. A lack of water can cause the feed impeller to turn in the wrong direction.

### → Remedy:

Disconnect the plug transformer and fill the pump with water. Then connect the plug again.

### Cleaning the filter



The filter should be completely clean!

### How to clean:

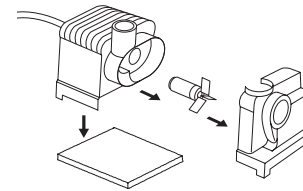
- Pull out the plug transformer!
- Clean the pump and the filter with a water jet.
- Dismantle (and re-assemble afterwards) casing fittings and clean the fittings inside carefully with water as described in the paragraph "Dismantling".

**Information:** Do not use any hard objects or strong detergents!

### Blocked feed impeller

If the feed impeller becomes blocked, the pump should be cleaned (see paragraph on "dismantling").

## Dismantling



- Pull out the plug transformer!
- Remove the pump from the water.
- Dismantle the casing fittings as follows:
  1. Pull down and remove the filter.
  2. Push away the pump casing from the motor casing at the pressure joint.
  3. Pull the feed impeller out of the motor casing.
  4. If necessary remove the volume control by moving it forwards.
- Afterwards re-assemble the fittings reversing the order and direction in which they were dismantled.

## Storage

### Where to store



**⚠ The pump should be stored out of the reach of children.**

1. Take the pump out of the water and store away from frost before the first frost sets in.
2. Clean and check the pump carefully.
3. Store the pump in a container filled with water.  
*The mains plug must not be submerged.*



## Information

### Complaints/Repairs

If you have any problems with your pump, please contact our Service or return the defective unit together with a short description of the problem – in case of guarantee, with a copy of the receipt – postage paid to one of the GARDENA Service Centres listed on the back of this leaflet.

### Product liability

We expressly point out that, in accordance with the product liability law, we are not liable for any damage caused by our units if it is due to improper repair or if parts exchanged are not original GARDENA parts or parts approved by us, and, if the repairs were not carried out by a GARDENA Service Centre or an authorised specialist. The same applies to spare parts and accessories.



## Technical Data

Type	<b>RP 300, 9 V</b>	<b>WLP 300 S</b>	<b>WLP 300 B</b>
Art. No.	7836	7839	7840
Rated power	14 W	14 W	14 W
Flow	300 l/h	300 l/h	300 l/h
Max. delivery head	0.7 m	0.7 m	0.7 m
Max. submersion depth	0.4 m	0.4 m	0.4 m
Power cable	1.5 m H03 VV	1.5 m H03 VV	1.5 m H03 VV
Fitting	Ø 13 mm (1/2")	Ø 13 mm (1/2")	Ø 13 mm (1/2")
Max. media temperature	35 °C	35 °C	35 °C
Mains voltage	230 V	230 V	230 V
Frequency	50 Hz	50 Hz	50 Hz
Noise level L <sub>WA</sub> <sup>1)</sup>	48 dB(A)	48 dB(A)	48 dB(A)

1) Measuring method according to EN 60335-1



## EU Certificate of Conformity

The undersigned

GARDENA Kress + Kastner GmbH · Hans-Lorenser-Str. 40 · D-89079 Ulm

hereby certifies that, when leaving our factory, the units indicated below are in accordance with the harmonised EU guidelines, EU standards of safety and product specific standards.

This certificate becomes void if the units are modified without our approval.

### Description of the units:

Indoor Fountain Pump /  
Water Light Jet Pump

### Types:

RP 300, 9 V /  
WLP 300 S / WLP 300 B

### Art. No.:

7836 / 7839 / 7840

### EU directives:

Machinery Directive 98/37/EC  
Electromagnetic Compatibility  
89/336/EC  
Low Voltage Directive  
73/23/EC  
Directive 93/68/EC

### Harmonised European standards:

EN 292-1  
EN 292-2  
EN 60335-1  
EN 60335-2-41

### Year of CE marking:

1999

Ulm, 01.06.1999

Thomas Heintl  
Technical Dept. Manager



## Guarantee

GARDENA guarantees this product for 3 years (from date of purchase). This guarantee covers all serious defects of the unit that can be proved to be material or manufacturing faults. Under warranty we will either replace the unit or repair it free of charge if the following conditions apply:

- The unit must have been handled properly and in keeping with the require-

ments of the operating instructions. Neither the purchaser nor a non-authorised third party have attempted to repair the unit.

Parts subject to wear (e.g. feed impeller) are excluded from this guarantee.

This manufacturer's guarantee does not affect the user's existing warranty claims against the dealer/seller.

In the event of a fault, please send the defective unit together with the receipt and a description of the fault, postage paid, to one of the GARDENA Service Centres on the back of this page.



**Deutschland**

GARDENA Kress + Kastner GmbH  
GARDENA Service  
Hans-Lorenser-Straße 40  
D-89079 Ulm

Produktfragen: (07 31) 490-123  
Reparaturen: (07 31) 490-290

**Argentina**

Argensem S.A.  
Venezuela 1075  
(1618) El Talar - Buenos Aires

**Australia**

NYLEX Corporation Ltd.  
25-29 Nepean Highway  
P.O. Box 68  
Mentone, Victoria 3194

**Austria**

GARDENA Österreich Ges. m.b.H.  
Stettnerweg 11-15  
2100 Korneuburg

**Belgium**

MARKT (Belgium) NV/SA  
Sterrebeekstraat 163  
1930 Zaventem

**Brazil**

M. Cassab  
Av. das Nações Unidas, 20.882  
Santo Amaro, CEP 04795-000  
São Paulo - S.P.

Bulgaria / България  
ДЕНЕКС ООД  
бул. „Черни връх“ 43  
София 1407

**Canada**

GARDENA Canada Ltd.  
100, Summerlea Road  
Brampton, Ontario  
Canada L6T 4X3

**Chile**

Antonio Martinic Y CIA. LTDA.  
Gilberto Fuenzalida 185 Loc.  
Las Condes  
Santiago de Chile

**Costa Rica**

Compania Exim  
Euroiberoamericana S.A.  
350 Sur del Automercado  
Los Yoses  
San Pedro

**Cyprus**

FARMOKIPIKI LTD  
P.O. Box 7098  
74, Digeni Akrita Ave.  
1641 Nicosia

**Czech Republic**

GARDENA spol. s.r.o.  
Ripská 20  
62700 Brno

**Denmark**

GARDENA Danmark A/S  
Naverland 8  
2600 Glostrup

**Finland**

Habitec Oy  
Martinkyläntie 52  
01720 Vantaa

**France**

GARDENA France  
Service Après-Vente  
BP 50080  
95948 ROISSY CDG Cedex

**Great Britain**

GARDENA UK Ltd.  
27-28 Brenkley Way  
Blezard Business Park  
Seaton Burn  
Newcastle upon Tyne NE13 6DS

**Greece**

Agrokyp G. Psomadopoulos & Co.  
20, Lykourgou str.  
Kallithea - Athens

**Hungary**

GARDENA Magyarország Kft.  
Késmárk utca 22  
1158 Budapest

**Iceland**

Heimilistaeki hf  
Saetun 8  
P.O. Box 5340  
125 Reykjavik

**Republic of Ireland**

Michael McLoughlin & Sons  
Hardware Limited  
Long Mile Road  
Dublin 12

**Italy**

GARDENA Italia S.r.l.  
Via Donizetti 22  
20020 Lainate (Mi)

**Japan**

KAKUDAI Mfg. Co. Ltd.  
1-4-4, Itachibori Nishi-ku  
Osaka 550

**Luxembourg**

Magasins Jules Neuberg  
Grand Rue 30  
Case Postale No. 12  
Luxembourg 2010

**Netherlands**

MARKT (Holland) BV  
Postbus 219  
1380 AE Weesp

**Neth. Antilles**

Jonka Enterprises N.V.  
Sta. Rosa Weg 196  
P.O. Box 8200  
Curaçao

**New Zealand**

NYLEX New Zealand Limited  
Private Bag 94001  
South Auckland Mail Centre  
10 Offenhauser Drive  
East Tamaki, Manukau

**Norway**

GARDENA Norge A/S  
Postboks 214  
2013 Skjetten

**Poland**

GARDENA Polska Sp. z o.o.  
Szymanów 9 d  
05-532 Baniocha

**Portugal**

MARKT (Portugal), Lda.  
Recta da Granja do Marquês  
Edif. GARDENA  
Algueirão  
2725-596 Mem Martins

**Russia / Россия**

АО АМИДА ТТЦ  
ул. Мосфильмовская 66  
117330 Москва

**Singapore**

Variware  
Holland Road Shopping Centre  
227-A 1st Fl., Unit 29  
Holland Avenue  
Singapore 1027

**Slovenia / Croatia**

Silk d.o.o. Trgovina  
Brodišče 15  
1236 Trzin

**South Africa**

GARDENA South Africa (Pty.) Ltd.  
P.O. Box 11534  
Vorna Valley 1686

**Spain**

ANMI Andreu y Miriam S.A.  
Calle Pere IV, 111  
08018 Barcelona

**Sweden**

GARDENA Svenska AB  
Box 9003  
20039 Malmö

**Switzerland**

GARDENA Kress + Kastner AG  
Bitziberg 1  
8184 Bachenbülach

**Ukraine / Украина**

АОЗТ АЛЬЦЕСТ  
ул. Гайдара 50  
г. Киев 01033

**Turkey**

Dost Dis Ticaret Mümessilik A.Ş.  
Yali Mah. Turgut Pasa Cad.  
No: 7 1/2  
Kartal - İstanbul

**USA**

GARDENA  
3085 Shawnee Drive  
Winchester, VA 22604

7836-20.960.05/0001  
GARDENA Kress + Kastner GmbH  
Postfach 27 47, D-89070 Ulm  
<http://www.gardena.de>

T3055116181E/Id.22245/07H