



9 V RP 300 Art. 7836
WLP 300 S Art. 7839
WLP 300 B Art. 7840

D Gebrauchsanweisung

Zimmerbrunnenpumpe / Wasserlichtspiel-Pumpe 9 V

GB Operating Instructions

Indoor Fountain Pump / Water Light Jet Pump 9 V

F Mode d'emploi

Pompe pour fontaines d'intérieur / Pompe pour jets d'eau avec éclairage 9 V

NL Gebruiksaanwijzing

Binnenshuis-fonteinpomp / Water-/lichtspelpomp 9 V

S Bruksanvisning

Pump för inomhusfontän / Fontän Pump med lampa 9 V

I Istruzioni per l'uso

Pompa per fontana da interni / Pompa per gioco di acqua e luce 9 V

E Manual de instrucciones

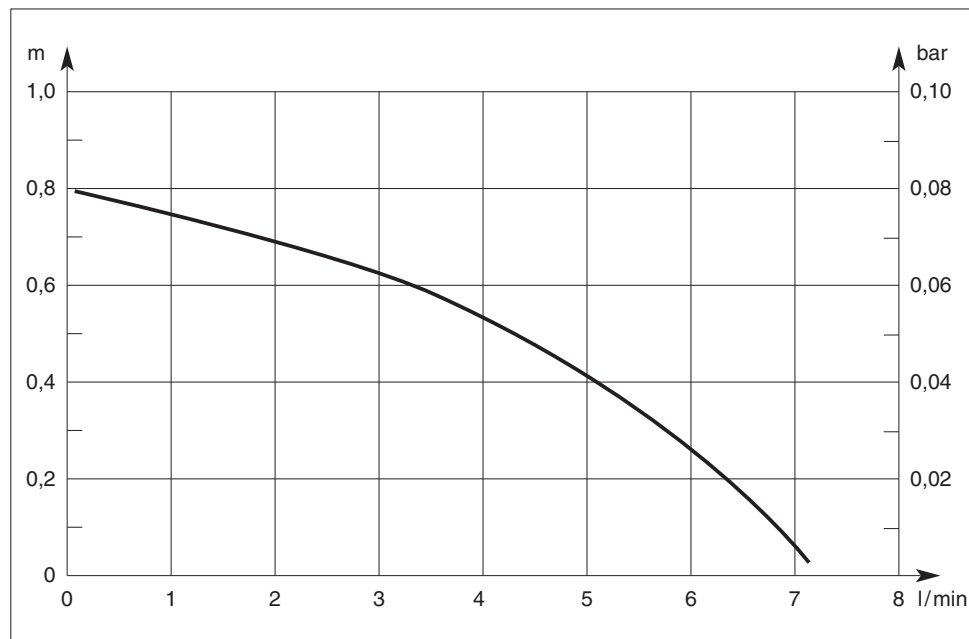
Bomba para fuentes interiores / Bomba para juego de agua con luz 9 V

P Instruções de manejo

Bomba para fontes interiores / Bomba para jactos de água luminosos 9 V

DK Brugsanvisning

Springvandspumpe indendørs/terrasse / Springvandspumpe med lys 9 V



GB

GARDENA Indoor Fountain Pump RP 300, 9 V Water Light Jet Pump WLP 300 S / WLP 300 B

Welcome to GARDENA aquamotion ...



Please read these operating instructions carefully and observe the notes given. Use the instructions to familiarise yourself with the equipment, the operating controls, their correct use, and the notes on safety.

⚠ For safety reasons, children under 16 as well as persons not familiar with these operating instructions should not use this pump.

Keep these operating instructions in a safe place.

The Applications Range of your Pump

Intended purpose

GARDENA Indoor Fountain Pumps and Water Light Jet Pumps have been designed for private use around your house. They are not designed for operating watering tools and systems. The pumps are designed for indoor use only.

GB

Attention

⚠ GARDENA Indoor Fountain Pumps and Water Light Jet Pumps have not been designed for constant use in the industrial sector. Corrosive, easily combustible, aggressive or explosive substances (e.g. petrol, petroleum, nitro thinner) as well as salt-water or food / drinking water must not be pumped.

⚠ For Your Safety

Operating the Pump

The transformer should be operated via a residual current device with a residual current rating of ≤ 30 mA (DIN VDE 0100-702 and 0100-738). Please ask your electrician for his advice.

Mains power cables

Mains power cables should not have a smaller cross-section than a PVC cable of the designation H03 VV. Extension cables must meet the requirements of DIN VDE 0620.

Visual check

Before operating the pump, look to see if there is any damage of the pump. A damaged pump must not be used. In case of damage, please have the pump checked by our GARDENA Service Centre or by an authorised electrician.

Check line voltage

Check line voltage. Data indicated on the type plate must match technical data of the mains supply.

Do not operate pump when people are in water

The pump must not be operated when there are people in the water.

Do not use power cable to carry the pump

Do not use the power cable to carry the pump or to pull the plug. Protect the power cable from heat, oil and sharp edges.

Disconnect plug

Please unplug the pump after operation and before carrying out any maintenance works.

Temperature of the liquid used

The temperature of the liquid used must not be below 4 °C or above 35 °C.

Wear and reduced output

Sand and other abrasive substances in the liquid cause increased wear and reduce the output of the pump.

**Caution!
9 V low voltage**

GARDENA pumps and plug connections have been designed exclusively for the use with 9 V low voltage. When connected to 230 V your life is at risk! Operate the pump only with the delivered transformer.

Do not expose the transformer to sunlight

Do not expose the transformer to direct sunlight.

Operation

Installing the pump

Before operation submerge the pump in the water. Take care that the pump is positioned in a way that the casing is completely immersed in water.

⚠ The foam filter at the bottom must not be covered up at the side!

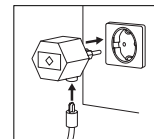
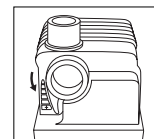
Caution: Submersion depth

Please note the maximum submersion depth (see "Technical Data").

Switching on the pump

Put the plug of the pump into the socket of the mains plug and then the mains plug into a 230 V AC socket.

Caution! Pump will start immediately.

**Volume regulator**

Adjust the volume according to your needs by turning the volume control. (→ Turning anti-clockwise increases the volume)



Avoid dry operation

Avoid dry operation of the pump as dry running will produce undesirable heat and destroy the pump.

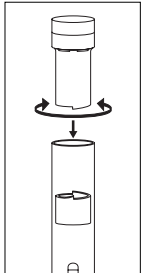
Only for WLP 300 S and WLP 300 B

Control/Setting of the Light Effect Jets

Water jet (WLP 300 S)

The light effects can be controlled with the volume control of the pump (→ see "Operation").

Light sphere (WLP 300 B)

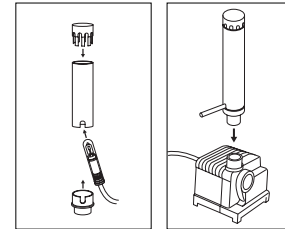


- Smaller diameters of light sphere:
Turn the light effect control anti-clockwise upwards
- Bigger diameters of light sphere:
Turn the light effect control clockwise downwards.



Dismantling of the Light Effect Jets

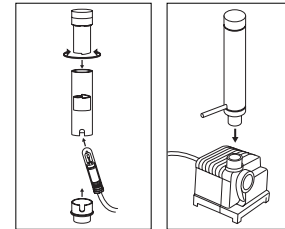
Water jet (WLP 300 S)



- Disconnect plug transformer!
- Remove the jet from the pump.
- Pull off the top section of the jet of the light base.
- Pull out the lamp.
- Assemble the components in reverse order of the dismantling.
→ While assembling take care that the cable of the lamp is correctly inserted into the side slot!

Only 12 V halogen lamps of max. 5 watts may be used!

Light sphere (WLP 300 B)



- Disconnect plug transformer!
- Take the jet out of the pump.
- Unscrew the jet from the light base.
- Pull off the bottom section of the light base.
- Pull out the lamp.
- Assemble the components in reverse order of the dismantling.
→ While assembling take care that the cable of the lamp is correctly inserted into the side slot!

Only 12 V halogen lamps of max. 5 watts may be used!

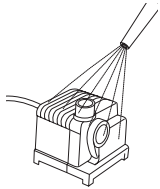
Care Instructions

Take care that the pump is always completely submerged in water. A lack of water can cause the feed impeller to turn in the wrong direction.

→ Remedy:

Disconnect the plug transformer and fill the pump with water. Then connect the plug again.

Cleaning the filter



The filter should be completely clean!

How to clean:

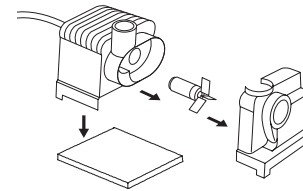
- Pull out the plug transformer!
- Clean the pump and the filter with a water jet.
- Dismantle (and re-assemble afterwards) casing fittings and clean the fittings inside carefully with water as described in the paragraph "Dismantling".

Information: Do not use any hard objects or strong detergents!

Blocked feed impeller

If the feed impeller becomes blocked, the pump should be cleaned (see paragraph on "dismantling").

Dismantling



- Pull out the plug transformer!
- Remove the pump from the water.
- Dismantle the casing fittings as follows:
 1. Pull down and remove the filter.
 2. Push away the pump casing from the motor casing at the pressure joint.
 3. Pull the feed impeller out of the motor casing.
 4. If necessary remove the volume control by moving it forwards.
- Afterwards re-assemble the fittings reversing the order and direction in which they were dismantled.

Storage

Where to store



⚠ The pump should be stored out of the reach of children.

1. Take the pump out of the water and store away from frost before the first frost sets in.
2. Clean and check the pump carefully.
3. Store the pump in a container filled with water.
The mains plug must not be submerged.



Information

Complaints/Repairs

If you have any problems with your pump, please contact our Service or return the defective unit together with a short description of the problem – in case of guarantee, with a copy of the receipt – postage paid to one of the GARDENA Service Centres listed on the back of this leaflet.

Product liability

We expressly point out that, in accordance with the product liability law, we are not liable for any damage caused by our units if it is due to improper repair or if parts exchanged are not original GARDENA parts or parts approved by us, and, if the repairs were not carried out by a GARDENA Service Centre or an authorised specialist. The same applies to spare parts and accessories.



Technical Data

Type	RP 300, 9 V	WLP 300 S	WLP 300 B
Art. No.	7836	7839	7840
Rated power	14 W	14 W	14 W
Flow	300 l/h	300 l/h	300 l/h
Max. delivery head	0.7 m	0.7 m	0.7 m
Max. submersion depth	0.4 m	0.4 m	0.4 m
Power cable	1.5 m H03 VV	1.5 m H03 VV	1.5 m H03 VV
Fitting	Ø 13 mm (1/2")	Ø 13 mm (1/2")	Ø 13 mm (1/2")
Max. media temperature	35 °C	35 °C	35 °C
Mains voltage	230 V	230 V	230 V
Frequency	50 Hz	50 Hz	50 Hz
Noise level L _{WA} ¹⁾	48 dB(A)	48 dB(A)	48 dB(A)

1) Measuring method according to EN 60335-1



EU Certificate of Conformity

The undersigned

GARDENA Kress + Kastner GmbH · Hans-Lorenser-Str. 40 · D-89079 Ulm

hereby certifies that, when leaving our factory, the units indicated below are in accordance with the harmonised EU guidelines, EU standards of safety and product specific standards.

This certificate becomes void if the units are modified without our approval.

Description of the units :

Indoor Fountain Pump /
Water Light Jet Pump

Types :

RP 300, 9 V /
WLP 300 S / WLP 300 B

Art. No. :

7836 / 7839 / 7840

EU directives :

Machinery Directive 98/37/EC
Electromagnetic Compatibility
89/336/EC
Low Voltage Directive
73/23/EC
Directive 93/68/EC

**Harmonised
European standards :**

EN 292-1
EN 292-2
EN 60335-1
EN 60335-2-41

Year of CE marking :

1999

Ulm, 01.06.1999

Thomas Heintl
Technical Dept. Manager



Guarantee

GARDENA guarantees this product for 3 years (from date of purchase). This guarantee covers all serious defects of the unit that can be proved to be material or manufacturing faults. Under warranty we will either replace the unit or repair it free of charge if the following conditions apply:

- The unit must have been handled properly and in keeping with the require-

ments of the operating instructions. Neither the purchaser nor a non-authorized third party have attempted to repair the unit.

Parts subject to wear (e.g. feed impeller) are excluded from this guarantee.

This manufacturer's guarantee does not affect the user's existing warranty claims against the dealer/seller.

In the event of a fault, please send the defective unit together with the receipt and a description of the fault, postage paid, to one of the GARDENA Service Centres on the back of this page.

Deutschland

GARDENA Kress + Kastner GmbH
GARDENA Service
Hans-Lorenser-Straße 40
D-89079 Ulm

Produktfragen: (07 31) 490-123
Reparaturen: (07 31) 490-290

Argentina

Argensem S.A.
Venezuela 1075
(1618) El Talar - Buenos Aires

Australia

NYLEX Corporation Ltd.
25-29 Nepean Highway
P.O. Box 68
Mentone, Victoria 3194

Austria

GARDENA Österreich Ges. m.b.H.
Stettnerweg 11-15
2100 Korneuburg

Belgium

MARKT (Belgium) NV/SA
Sterrebeekstraat 163
1930 Zaventem

Brazil

M. Cassab
Av. das Nações Unidas, 20.882
Santo Amaro, CEP 04795-000
São Paulo - S.P.

Bulgaria / България
ДЕНЕКС ООД
бул. „Черни връх“ 43
София 1407

Canada

GARDENA Canada Ltd.
100, Summerlea Road
Brampton, Ontario
Canada L6T 4X3

Chile

Antonio Martinic Y CIA. LTDA.
Gilberto Fuenzalida 185 Loc.
Las Condes
Santiago de Chile

Costa Rica

Compania Exim
Euroiberoamericana S.A.
350 Sur del Automercado
Los Yoses
San Pedro

Cyprus

FARMOKIPIKI LTD
P.O. Box 7098
74, Digeni Akrita Ave.
1641 Nicosia

Czech Republic

GARDENA spol. s.r.o.
Ripská 20
62700 Brno

Denmark

GARDENA Danmark A/S
Naverland 8
2600 Glostrup

Finland

Habitec Oy
Martinkyläntie 52
01720 Vantaa

France

GARDENA France
Service Après-Vente
BP 50080
95948 ROISSY CDG Cedex

Great Britain

GARDENA UK Ltd.
27-28 Brenkley Way
Blezard Business Park
Seaton Burn
Newcastle upon Tyne NE13 6DS

Greece

Agrokyp G. Psomadopoulos & Co.
20, Lykourgou str.
Kallithea - Athens

Hungary

GARDENA Magyarország Kft.
Késmárk utca 22
1158 Budapest

Iceland

Heimilistaeki hf
Saetun 8
P.O. Box 5340
125 Reykjavik

Republic of Ireland

Michael McLoughlin & Sons
Hardware Limited
Long Mile Road
Dublin 12

Italy

GARDENA Italia S.r.l.
Via Donizetti 22
20020 Lainate (Mi)

Japan

KAKUDAI Mfg. Co. Ltd.
1-4-4, Itachibori Nishi-ku
Osaka 550

Luxembourg

Magasins Jules Neuberg
Grand Rue 30
Case Postale No. 12
Luxembourg 2010

Netherlands

MARKT (Holland) BV
Postbus 219
1380 AE Weesp

Neth. Antilles

Jonka Enterprises N.V.
Sta. Rosa Weg 196
P.O. Box 8200
Curaçao

New Zealand

NYLEX New Zealand Limited
Private Bag 94001
South Auckland Mail Centre
10 Offenhauser Drive
East Tamaki, Manukau

Norway

GARDENA Norge A/S
Postboks 214
2013 Skjetten

Poland

GARDENA Polska Sp. z o.o.
Szymanów 9 d
05-532 Baniocza

Portugal

MARKT (Portugal), Lda.
Recta da Granja do Marquês
Edif. GARDENA
Algueirão
2725-596 Mem Martins

Russia / Россия

АО АМИДА ТТЦ
ул. Мосфильмовская 66
117330 Москва

Singapore

Variware
Holland Road Shopping Centre
227-A 1st Fl., Unit 29
Holland Avenue
Singapore 1027

Slovenia / Croatia

Silk d.o.o. Trgovina
Brodišče 15
1236 Trzin

South Africa

GARDENA South Africa (Pty.) Ltd.
P.O. Box 11534
Vorna Valley 1686

Spain

ANMI Andreu y Miriam S.A.
Calle Pere IV, 111
08018 Barcelona

Sweden

GARDENA Svenska AB
Box 9003
20039 Malmö

Switzerland

GARDENA Kress + Kastner AG
Bitziberg 1
8184 Vachenbülach

Ukraine / Украина

АОЗТ АЛЬЦЕСТ
ул. Гайдара 50
г. Киев 01033

Turkey

Dost Dis Ticaret Mümessilik A.Ş.
Yali Mah. Turgut Pasa Cad.
No: 7 1/2
Kartal - İstanbul

USA

GARDENA
3085 Shawnee Drive
Winchester, VA 22604

7836-20.960.05/0001
GARDENA Kress + Kastner GmbH
Postfach 27 47, D-89070 Ulm
<http://www.gardena.de>

T305516181E/Id.22245/07H