

WP 600/2 Art. 7846  
WP 800/2 Art. 7848

**D Gebrauchsanweisung**

Wasserspielpumpe

---

**GB Operating Instructions**

Fountain Pump

---

**F Mode d'emploi**

Pompe pour jets d'eau

---

**NL Gebruiksaanwijzing**

Waterspelpomp

---

**S Bruksanvisning**

Fontän Pump Set

---

**I Istruzioni per l'uso**

Pompa per giochi d'acqua

---

**E Manual de instrucciones**

Bomba para juegos de agua

---

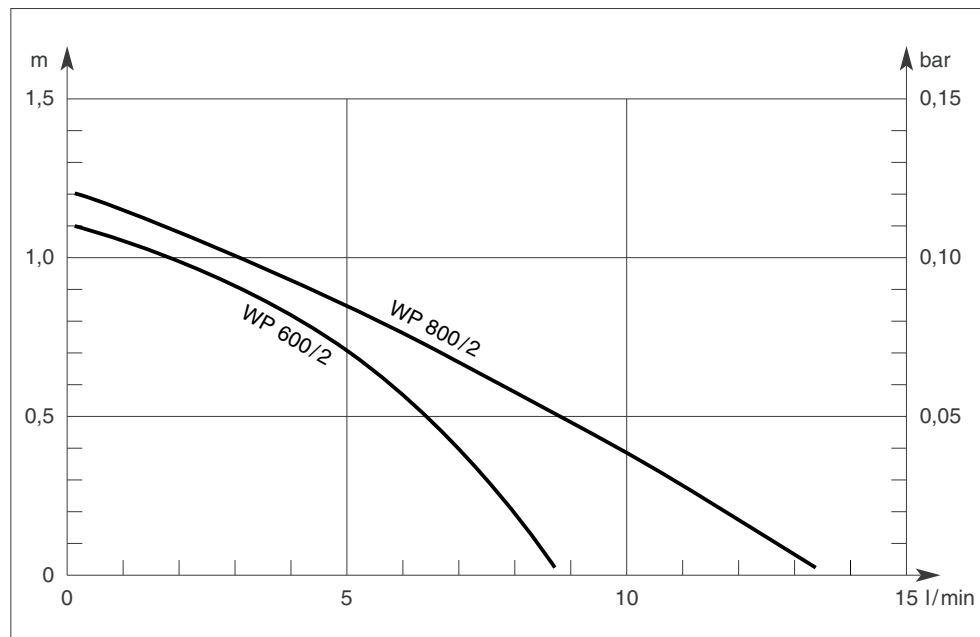
**P Instruções de manejo**

Bomba para fontes

---

**DK Brugsanvisning**

Springvandspumpe Sæt



**D**

Bitte lesen Sie diese Gebrauchsanweisung vor Inbetriebnahme Ihres Gerätes sorgfältig.

	Seite
Gebrauchsanweisung	3 - 9

**GB**

Please read these operating instructions carefully before using the unit.

	Page
Operating instructions	10 - 15

**F**

Nous vous remercions de bien vouloir lire attentivement ce mode d'emploi avant l'utilisation de votre pompe.

	Page
Mode d'emploi	16 - 21

**NL**

Lees deze gebruiksaanwijzing voor ingebruikname van het apparaat zorgvuldig door.

	Pagina
Gebruiksaanwijzing	22 - 27

**S**

Läs igenom bruksanvisningen noggrant innan Du tar Din GARDENA Pump i bruk.

	Sida
Bruksanvisning	28 - 33

**I**

Prima di mettere in uso la nuova pompa, leggere attentamente le istruzioni.

	pagina
Istruzioni per l'uso	34 - 39

**E**

Antes de la puesta en marcha del aparato, aconsejamos una atenta lectura del presente manual de instrucciones.

	Página
Manual de instrucciones	40 - 45

**P**

Por favor leia atentamente estas instruções de manejo antes de utilizar esta bomba.

	Página
Manual de instruções	46 - 51

**DK**

Læs venligst brugsanvisningen omhyggeligt igennem.

	Side
Brugsanvisning	52 - 57

# GARDENA Fountain Pump

## WP 600/2, WP 800/2

Welcome to GARDENA aquamotion ...



Please read these operating instructions carefully and observe the notes given. Use the instructions to familiarise yourself with the equipment, the operating controls, their correct use, and the notes on safety.



For safety reasons, children under 16 as well as persons not familiar with these operating instructions should not use this pump.

→ Keep these operating instructions in a safe place.

### Contents

1. The Applications Range of Your GARDENA Fountain Pump .....	10
2. For Your Safety .....	10
3. Applications: Examples – System extensions – Product Recommendations .....	11
4. Operation .....	12
5. Care instructions .....	13
6. Dismantling .....	13
7. Storage .....	13
8. Technical Data .....	14
9. Service .....	14

## 1. The Applications Range of Your GARDENA Fountain Pump

### Intended purpose

GARDENA Fountain Pumps have been designed for private use. They are not designed for operating watering tools and systems. The pumps may be used indoors as well as outdoors.

### Attention



GARDENA Fountain Pumps have not been designed for constant use in the industrial sector. Corrosive, easily combustible, aggressive or explosive substances (e.g. petrol, petroleum, nitro thinner) as well as salt-water or food / drinking water must not be pumped.

## 2. For Your Safety

### Operating the Pump

The pump should be operated via a residual current device with a residual current rating of  $\leq 30$  mA (DIN VDE 0100-702 and 0100-738). The pump must be placed on solid, even ground. Please ask your electrician for his advice.

### Mains power cables

Mains power cables should not have a smaller cross-section than a rubber sheathed cable of the designation H05 RNF. Extension cables must meet the requirements of DIN VDE 0620.

### For Austria

In Austria power cables should correspond to ÖVE-EM 42, T2 (2000)/1979 § 22 according to § 2022.1. According to this standard pumps used in swimming pools and ponds should only be operated via an isolating transformer. Please contact your electrician.

### For Switzerland

In Switzerland mobile appliances which are used outdoors, must be connected via a residual-current device.

### Visual check

Before operating the pump, look to see if there is any damage of the pump (esp. regarding power cable and plug). A damaged pump must not be used. In case of damage, please have the pump checked by our GARDENA Service Centre or by an authorised electrician.

### Check line voltage

Check line voltage. Data indicated on the type plate must match technical data of the mains supply.

### Do not operate pump when there are people in the water

The pump must not be operated when there are people in the water.

### Swimming pools and garden ponds

Swimming pools and garden ponds should be designed according to international and national design regulations. Please consult a professional electrician.

### Do not use power cable to carry the pump

Do not use the power cable to carry the pump or to pull the plug out of the socket. Protect the power cable from heat, oil and sharp edges.

### Disconnect plug

Please unplug the pump after operation and before carrying out any maintenance works.

### Temperature of the liquid used

The temperature of the liquid used must not be below 4 °C or above 35 °C.

### Wear and reduced output

Sand and other abrasive substances in the liquid cause increased wear and reduce the output of the pump.

### Observe local noise prevention regulations

Please observe the local noise prevention regulations.

## 3. Applications: Examples – System extensions – Product Recommendations

### Adaptable lamps

→ Example for application:  
**Underwater lighting of water jets and pond edges.**

→ Products:  
GARDENA Underwater Light Art. No. 7951  
GARDENA *lightline* Transformers

### Remote control

→ Example for application:  
**For operating water jets from the comfort of your patio or your living room.**

→ Products:  
GARDENA Remote Control Set Art. No. 7874  
GARDENA Remote Control Socket Art. No. 7875

### Filling the filter tank with zeolith

→ Example for application:  
**Cleaning ponds either with or without fish.**

→ Products:  
 GARDENA Pond Filter Art. No. 7904  
 GARDENA Pond Filter Art. No. 7906

Zeolith fulfils the following functions:

- Filters the water (→ protection for the pump).
- Bonds with excessive nutrients and causes their decomposition by bacteria (→ Ion exchange and the bonding of e.g. nitrate).
- Helps to keep the pond clean and maintain the biological balance.
- Provides stability for the pump.

GARDENA Zeolith, 1 l Art. No. 7914  
 GARDENA Zeolith, 5 l Art. No. 7915

#### Note:

To ensure the zeolith functions correctly, we recommend you replace or clean it every 6 months (e.g. in salt water).

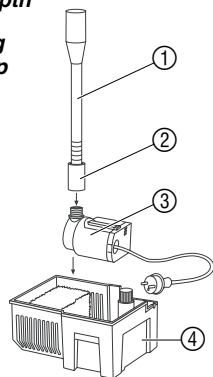
- Always unplug the pump first before working on it.
- Follow the Safety and Assembly Information attached to the operating instructions.

### Information

## 4. Operation

### Pay attention to minimum water depth

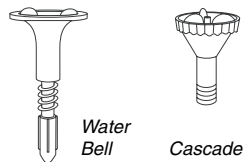
### Installing the pump



Please note the maximum submersion depth (see "Technical Data").

1. Screw nozzle pipe ① with throttle valve ② clockwise all the way onto the pump ③.
2. Insert pump ③ in filter basket ④.
3. Stand filter basket ④ on a firm surface so that the upper edge of the filter basket is submerged.

### Adjusting fountain



1. Screw the fountain insert you want to install (Water Bell, Cascade) into nozzle pipe ①.
2. Open throttle valve ② at least one turn anti-clockwise until water flow is adjusted correctly.
3. **Only if installing Water Bell:** Screw Water Bell fountain insert into fountain until Waterbell creates the shape you want.

### Starting the pump

Connect the power cable to a 230 V AC socket.

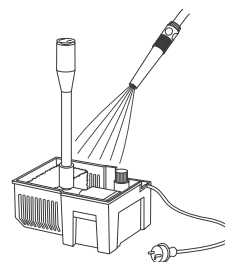
⚠ Caution! Pump will start running immediately!

### Avoid dry operation

Avoid dry operation of the pump as dry running will produce undesirable heat and destroy the pump.

## 5. Care instructions

### Cleaning the tank



Tank and pump should be free from dirt particles!

#### How to clean:

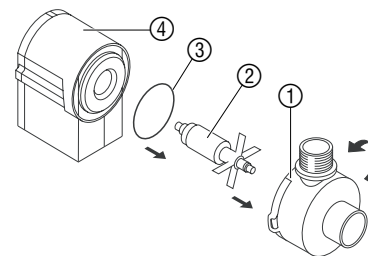
- Disconnect the plug!
- Remove the pump from the water.
- If necessary remove the gravel.
- Clean the pump and the filter using a water jet.
- If there are deposits of dirt inside the pump then dismantle the casing (→ see „Dismantling“) and carefully clean the interior fittings with water.

**Information:** Do not use any hard objects or strong detergents!

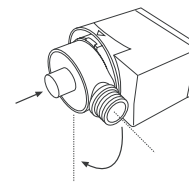
### Blocked feed impeller

If the feed impeller becomes blocked, the pump and the filter should be cleaned (see above).

## 6. Dismantling



1. Disconnect the plug!
2. Remove the pump from the water.
3. If necessary remove the gravel.
4. Pull the pump pointing vertically upwards out of the tank.
5. Turn the pump casing ① to the left to the limit stop and then pull it straight towards the front and remove it! Do not tilt!
6. Pull the feed impeller ② out of the motor casing ④.



- Then assemble all the fittings reversing the order and direction in which they were dismantled. Please take care that the seal ring ③ is properly re-fitted.

→ When installing, fit pump casing with connecting piece in vertical position, press down firmly then screw down.

→ Observe the markings.

## 7. Storage

### Where to store



⚠ The pump should be stored out of the reach of children.

1. Remove the pump from the pond and store away from frost before the first frost sets in.
2. Clean and check the pump carefully.
3. Store the pump in a container filled with water.  
*The mains plug must not be submerged.*

## 8. Technical Data

Type	WP 600/2	WP 800/2
Art. No.	7846	7848
Rated power	7.5 W	9.5 W
Flow	8.5 l/min	13 l/min
Max. delivery head	1.1 m	1.2 m
Max. submersion depth	1.0 m	1.0 m
Power cable	10 m H05 RNF	10 m H05 RNF
Fitting	21 mm (G 1/2) male thread	21 mm (G 1/2) male thread
Max. media temperature	35 °C	35 °C
Mains voltage	230 V	230 V
Frequency	50 Hz	50 Hz
Noise level $L_{WA}$ <sup>1)</sup>	48 dB(A)	48 dB(A)

1) Measuring method according to EN 60335-1

## 9. Service

### Guarantee

GARDENA guarantees this product for 2 years (from date of purchase). This guarantee covers all serious defects of the unit that can be proved to be material or manufacturing faults. Under warranty we will either replace the unit or repair it free of charge if the following conditions apply:

- The unit must have been handled properly and in keeping with the requirements of the operating instructions.
- Neither the purchaser or a non-authorised third party have attempted to repair the unit.

Parts subject to wear (e.g. feed impeller) are excluded from this guarantee.

This manufacturer's guarantee does not affect the user's existing warranty claims against the dealer/seller.

If you have any problems with your Fountain Pump, please contact our Service or return the defective unit together with a short description of the problem – in case of guarantee, with a copy of the receipt – postage paid to one of the GARDENA Service Centres listed on the back of this leaflet.

### Product liability

We expressly point out that, in accordance with the product liability law, we are not liable for any damage caused by our units if it is due to improper repair or if parts exchanged are not original GARDENA parts or parts approved by us, and, if the repairs were not carried out by a GARDENA Service Centre or an authorised specialist. The same applies to spare parts and accessories.

## EU Certificate of Conformity

The undersigned

GARDENA Kress + Kastner GmbH · Hans-Lorenser-Str. 40 · D-89079 Ulm

hereby certifies that, when leaving our factory, the units indicated below are in accordance with the harmonised EU guidelines, EU standards of safety and product specific standards.

This certificate becomes void if the units are modified without our approval.

**Description of the units:** Fountain Pumps  
**Type:** WP 600/2, WP 800/2  
**Art. No.:** 7846 / 7848  
**EU directives:** Machinery Directive 98/37/EC  
 Electromagnetic Compatibility 89/336/EC  
 Low Voltage Directive 73/23/EC  
 Directive 93/68/EC

**Harmonised European standards:** EN 292-1  
 EN 292-2  
 EN 60335-1  
 EN 60335-2-41

**Year of CE marking:** 2000

Ulm, 20.11.2000



Thomas Heintl  
 Technical Dept. Manager

**Deutschland**

GARDENA Kress + Kastner GmbH  
GARDENA Service  
Hans-Lorenser-Straße 40  
D-89079 Ulm  
Produktfragen: (07 31) 490-123  
Reparaturen: (07 31) 490-290

**Argentina**

Argensem S.A.  
Venezuela 1075  
(1618) El Talar - Buenos Aires

**Australia**

NYLEX Corporation Ltd.  
25-29 Nepean Highway  
P.O. Box 68  
Mentone, Victoria 3194

**Austria**

GARDENA Österreich Ges. m.b.H.  
Stettnerweg 11-15  
2100 Korneuburg

**Belgium**

MARKT (Belgium) NV/SA  
Sterrebeekstraat 163  
1930 Zaventem

**Brazil**

M. Cassab  
Av. das Nações Unidas, 20.882  
Santo Amaro, CEP 04795-000  
São Paulo - S.P.

**Bulgaria / България**

ДЕНЕКС ООД  
бул. „Черни връх“ 43  
София 1407

**Canada**

GARDENA Canada Ltd.  
100, Summerlea Road  
Brampton, Ontario  
Canada L6T 4X3

**Chile**

Antonio Martinic Y CIA. LTDA.  
Gilberto Fuenzalida 185 Loc.  
Las Condes - Santiago de Chile

**Costa Rica**

Compania Exim  
Euroibericoamericana S.A.  
350 Sur del Automercado  
Los Yoses  
San Pedro

**Cyprus**

FARMOKIPIKI LTD  
P.O. Box 7098  
74, Digeni Akrita Ave.  
1641 Nicosia

**Czech Republic**

GARDENA spol. s.r.o.  
Ripská 20  
62700 Brno

**Denmark**

GARDENA Danmark A/S  
Naverland 8  
2600 Glostrup

**Finland**

Habitec Oy  
Martinkyläntie 52  
01720 Vantaa

**France**

GARDENA France  
Service Après-Vente  
BP 50080  
95948 ROISSY CDG Cedex

**Great Britain**

GARDENA UK Ltd.  
27-28 Brenkley Way  
Blezard Business Park  
Seaton Burn  
Newcastle upon Tyne  
NE13 6DS

**Greece**

Agrokip G. Psomadopoulos & Co.  
20, Lykourgou str.  
Kallithea - Athens

**Hungary**

GARDENA Magyarország Kft.  
Késmárk utca 22  
1158 Budapest

**Iceland**

Heimilistaeki hf  
Saetun 8  
P.O. Box 5340  
125 Reykjavik

**Republic of Ireland**

Michael McLoughlin & Sons  
Hardware Limited  
Long Mile Road  
Dublin 12

**Italy**

GARDENA Italia S.r.l.  
Via Donizetti 22  
20020 Lainate (Mi)

**Japan**

KAKUDAI Mfg. Co. Ltd.  
1-4-4, Itachibori Nishi-ku  
Osaka 550

**Luxembourg**

Magasins Jules Neuberg  
Grand Rue 30  
Case Postale No. 12  
Luxembourg 2010

**Netherlands**

MARKT (Holland) BV  
Postbus 219  
1380 AE Weesp

**Neth. Antilles**

Jonka Enterprises N.V.  
Sta. Rosa Weg 196  
P.O. Box 8200  
Curaçao

**New Zealand**

NYLEX New Zealand Limited  
Private Bag 94001  
South Auckland Mail Centre  
10 Offenhauser Drive  
East Tamaki, Manukau

**Norway**

GARDENA Norge A/S  
Postboks 214  
2013 Skjetten

**Poland**

GARDENA Polska Sp. z o.o.  
Szymanów 9 d  
05-532 Baniocza

**Portugal**

MARKT (Portugal), Lda.  
Recta da Granja do Marquês  
Edif. GARDENA  
Algueirão  
2725-596 Mem Martins

**Russia / Россия**

АО АМИДА ТТЦ  
ул. Мосфильмовская 66  
117330 Москва

**Singapore**

Variaware  
Holland Road Shopping Centre  
227-A 1st Fl., Unit 29  
Holland Avenue  
Singapore 1027

**Slowenia / Croatia**

Silk d.o.o. Trgovina  
Brodišće 15  
1236 Trzin

**South Africa**

GARDENA South Africa (Pty.) Ltd.  
P.O. Box 11534  
Vorna Valley 1686

**Spain**

ANMI Andreu y Miriam S.A.  
Calle Pere IV, 111  
08018 Barcelona

**Sweden**

GARDENA Svenska AB  
Box 9003  
20039 Malmö

**Switzerland**

GARDENA Kress + Kastner AG  
Bitziberg 1  
8184 Vachenbülach

**Ukraine / Украина**

АОЗТ АЛЬЦЕСТ  
ул. Гайдара 50  
г. Киев 01033

**Turkey**

Dost Diş Ticaret Müessillik A.Ş.  
Yeşilbağlar Mah. Başkent  
Cad. No. 26  
Pendik - İstanbul

**USA**

GARDENA  
3085 Shawnee Drive  
Winchester, VA 22604

7846-20.960.02/0011  
GARDENA Kress + Kastner GmbH  
Postfach 27 47, D-89070 Ulm  
<http://www.gardena.de>