



Instruction Book - Model LE389

Read and keep this book for future reference.
This book contains important information on
SAFETY, ASSEMBLY, OPERATION, AND MAINTENANCE.

PRODUCT INFORMATION

The owner must be certain that all the product information is included with the unit.

This information includes the **INSTRUCTION BOOKS**, the **REPLACEMENT PARTS** and the **WARRANTIES**.

This information must be included to make sure state laws and other laws are followed.





Husqvarna

WARRANTY STATEMENT

SECTION 1: LIMITED WARRANTY

Husqvarna Forest & Garden Company (“Husqvarna”) warrants Husqvarna products to the original purchaser to be free from defects in material and workmanship from the date of purchase for the **“Warranty Period”** of the product as set forth below:

Lifetime Warranty: All tiller tines, trimmer shafts, ignition coils and modules on hand held products.

2 Year Warranty: Riding lawn mowers, yard and garden tractors, walk behind mowers, trimmers, brushcutters, snow blowers, hand held blowers, hedge trimmers, and electrical products for non-commercial, non-professional, non-institutional or non-income producing use, except as herein stated.

Emission control system components necessary to comply with CARB-95 and EPA regulations, except for those components which are part of engine systems manufactured by third party engine manufacturers for which the purchaser has received a separate warranty with product information supplied at time of purchase.

1 Year Warranty: Chain saws, cultivators, clearing saws and backpack blowers for non-commercial, non-professional, non-institutional or non-income producing use. Trimmer models 120, 125, 122, 132, 225, 232 and 235 used for commercial purposes.

90 Day Warranty: Any **Husqvarna** product used for rental, commercial, institutional, professional or income producing use except as otherwise provided herein.

30 Day Warranty: **Husqvarna** bow guide and replacement parts.

SECTION 2: HUSQVARNA'S OBLIGATIONS UNDER THE WARRANTY

Husqvarna will repair or replace defective components without charge for parts or labor if a component fails because of a defect in material or workmanship during the warranty period.

SECTION 3: ITEMS NOT COVERED BY THIS WARRANTY

The following items are not covered by this warranty:

1. Normal customer maintenance items which become worn through normal regular use, including, but not limited to, belts, blades, blade adapters, bulbs, filters, guide bars, lubricants, rewind springs, saw chain, spark plugs, starter ropes and tines.
2. Natural discoloration of material due to ultraviolet light.
3. Engine and drive systems not manufactured by **Husqvarna**; these items are covered by the respective manufacturer's warranty as provided in writing with the product information supplied at the time of purchase; all claims must be sent to the appropriate manufacturer.
4. Lawn and garden attachments are covered by a third party which gives a warranty, all claims for warranty should be sent to the manufacturer.
5. Emission Control System components necessary to comply with CARB-95 and EPA regulations which are manufactured by third parts engine manufacturer.

SECTION 4: EXCEPTIONS AND LIMITATIONS

This warranty shall be inapplicable to defects resulting from the following:

1. Accident, abuse, misuse, negligence and neglect, including stale fuel, dirt, abrasives, moisture, rust, corrosion, or any adverse reaction due to incorrect storage or use habits.



Husqvarna

WARRANTY STATEMENT

2. Failure to operate or maintain the unit in accordance with the Owner/Operator's manual or instruction sheet furnished by **Husqvarna**.
3. Alterations or modifications that change the intended use of the product or affects the product's performance, operation, safety, or durability, or causes the product to fail to comply with any applicable laws.
4. Additional damage to parts or components due to continued use occurring after any of the above.

REPAIR OR REPLACEMENT AS PROVIDED UNDER THIS WARRANTY IS THE EXCLUSIVE REMEDY OF THE PURCHASER. **HUSQVARNA** SHALL NOT BE LIABLE FOR ANY INCIDENTAL OR CONSEQUENTIAL DAMAGES FOR BREACH OF ANY EXPRESS OR IMPLIED WARRANTY ON THESE PRODUCTS EXCEPT TO THE EXTENT PROHIBITED BY APPLICABLE LAW. ANY IMPLIED WARRANTY OF MERCHANTABILITY OR FITNESS FOR A PARTICULAR **HUSQVARNA** RESERVES THE RIGHT TO CHANGE OR IMPROVE THE DESIGN OF THE PRODUCT WITHOUT NOTICE, AND DOES NOT ASSUME OBLIGATION TO UPDATE PREVIOUSLY MANUFACTURED PRODUCTS.

Some states do not allow the exclusion of incidental or consequential damages, or limitations or how long an implied warranty lasts, so the above limitations or exclusions may not apply to you. This warranty gives you specific legal rights, and you may also have other rights which vary from state to state.

SECTION 5: CUSTOMER RESPONSIBILITIES

The product must exhibit reasonable care, maintenance, operation, storage and general upkeep as written in the maintenance section of the Owner's/Operator's manual. Should an operational problem or failure occur, the product should not be used, but delivered as is to an authorized **Husqvarna** dealer for evaluation. Proof of purchase, as explained in section 6, rests solely with the customer.

SECTION 6: PROCEDURE TO OBTAIN WARRANTY CONSIDERATION

It is the Owner's and Dealer's responsibility to make certain that the Warranty Registration Card is properly filled out and mailed to **Husqvarna** Forest & Garden Company. This card should be mailed within ten (10) days from the date of purchase in order to confirm the warranty and to facilitate post-sale service.

Proof of purchase must be presented to the authorized **Husqvarna** dealer in order to obtain warranty service. This proof must include date purchased and model number.

To obtain the benefit of this warranty, the product believed to be defective must be delivered to an authorized **Husqvarna** dealer in a timely manner, no later than thirty (30) days from date of the operational problem or failure. The product must be delivered at the owner's expense. Pick up and delivery charges are not covered by this warranty. An authorized **Husqvarna** dealer can be normally located through the "**Yellow Pages**" of the local telephone directory or by calling 1-800-HUSKY62 for a dealer in your area.

HUSQVARNA FOREST & GARDEN COMPANY

9006-J Perimeter Woods Drive
1Charlotte, NC 28216

SAFETY RULES

This instruction book is written for a person with some mechanical ability. Like most service books, not all the steps are described. Steps on how to loosen or tighten fasteners are steps anyone can follow with some mechanical ability. Read and follow these instructions before you use the unit.

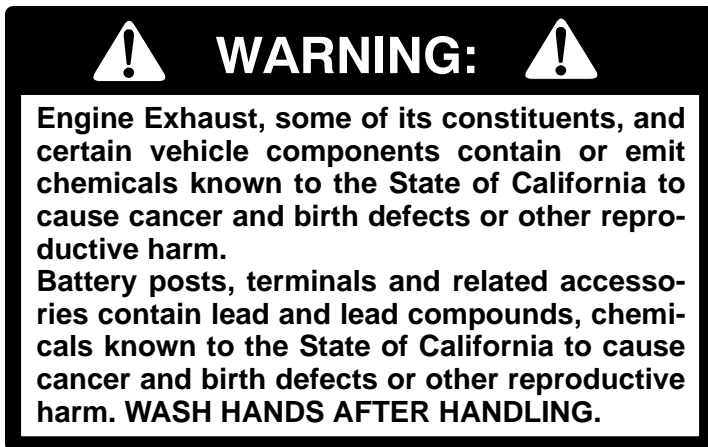
Know your product: If you understand the unit and how the unit operates, you will get the best performance. As you read this manual, compare the illustrations to the unit. Learn the location and the function of the controls. To help prevent an accident, follow the operating instructions and the safety rules. Keep this manual for future reference.

IMPORTANT: Many units are not assembled and are sold in cartons. It is the responsibility of the owner to make sure the assembly instructions in this manual are exactly followed. Other units are purchased in an assembled condition. On assembled units, it is the responsibility of the owner to make sure the unit is correctly assembled. The owner must carefully check the unit according to the instructions in this manual before it is first used.

RESPONSIBILITY OF THE OWNER

The responsibility of the owner is to follow the instructions below.

1. Carefully read and follow the rules for safe operation.
2. Follow all the assembly and preparation instructions.
3. Inspect the unit.
4. Make sure that the operator of the unit knows how to correctly use all standard and accessory equipment.
5. Operate the unit only with guards, shields, and other safety items in place and working correctly.
6. Correctly adjust the unit.
7. Service the unit only with authorized or approved replacement parts.
8. Complete all maintenance on the unit.



SAFETY RULES

Safe Operation Practices for Edger.



WARNING: Look for this symbol to point out important safety precautions. It means: "Attention! Become Alert! Your Safety Is Involved."



WARNING: To prevent accidental starting when setting-up, transporting, adjusting or making repairs, always disconnect spark plug wire and put wire where it cannot contact the spark plug .

Before Use

- Read the owner's manual carefully. Be thoroughly familiar with the controls and the proper use of the Edger. Know how to stop the Edger and disengage the controls quickly.
- Do not operate the Edger without wearing adequate outer garments. Wear footwear that will improve footing on slippery surfaces.
- Keep the area of operation clear of all persons, particularly small children and pets.
- Thoroughly inspect the area where the Edger is to be used and remove all foreign objects.

Fuel Safety

- Handle fuel with care; it is highly flammable.
- Use an approved container.
- Check fuel supply before each use, allowing space for expansion as the heat of the engine and/or sun can cause fuel to expand.
- Fill fuel tank outdoors with extreme care. Never fill fuel tank indoors. Replace fuel tank cap securely and wipe up spilled fuel.
- Never remove the fuel tank cap or add fuel to a running or hot engine.
- Never store fuel or Edger with fuel in the tank inside a building where fumes may reach an open flame.

Operating Safety

- Never allow children or young teenagers to operate the Edger. Keep them away while it is operating. Never allow adults to operate the Edger without proper instruction.
- Do not operate this machine if you are taking drugs or other medication which can cause drowsiness or affect your ability to operate this machine.
- Do not use this machine if you are mentally or physically unable to operate this machine safely.
- Always wear safety glasses or eye shields during operation or while performing an adjustment or repair to protect your eyes from foreign objects that may be thrown from the Edger.
- Do not put hands or feet near or under rotating parts.
- Exercise extreme caution when operating on or crossing gravel drives, walks, or roads. Stay alert for hidden hazards or traffic.
- Exercise caution to avoid slipping or falling.
- Never operate the Edger without proper guards, plates, or other safety protective devices in place.
- Never operate the Edger at high transport speeds on slippery surfaces. Look behind and use care when backing.
- Never allow bystanders near the Edger.
- Keep children and pets away while operating.
- Never operate the Edger without good visibility or light.
- Do not run the engine indoors. The exhaust fumes are dangerous, containing CARBON MONOXIDE, an ODORLESS and DEADLY GAS.
- Take all possible precautions when leaving the Edger unattended. Stop the engine.
- Do not overload the Edger capacity by attempting to till too deep at too fast a rate.

SAFETY RULES

Safe Storage

- Always refer to the owner's manual instructions for important details if the Edger is to be stored for an extended period.
- Never store the Edger with fuel in the fuel tank inside a building where ignition sources are present such as water and space heaters, clothes dryers, and the like. Allow the engine to cool before storing in any enclosure.
- Keep the Edger in safe working condition. Check all fasteners at frequent intervals for proper tightness.

Repair / Adjustments Safety

- After striking a foreign object, stop the engine. Remove the wire from the spark plug, and keep the wire away from the plug to prevent accidental starting. Thoroughly in-

spect the Edger for any damage, and repair the damage before restarting and operating it.

- If Edger should start to vibrate abnormally, stop engine and check immediately for the cause. Vibration is generally a warning of trouble.
- Stop the engine whenever you leave the operating position. Also, disconnect the spark plug wire before unclogging the blade and when making any repairs, adjustments, or inspections.
- When cleaning, repairing, or inspecting, shut off the engine and make certain all moving parts have stopped.
- Never attempt to make any adjustments while the engine is running except when specifically recommended by the manufacturer.

SAFETY RULES

INTERNATIONAL SYMBOLS

IMPORTANT: Many of the following symbols are located on your unit or on literature supplied with the product. Before you operate the unit, learn and understand the purpose for each symbol.

Control And Operating Symbols



Slow



Fast



Fuel



Oil

Safety Warning Symbols



WARNING
Thrown Objects.
Keep Bystanders Away.



WARNING
Rotating Parts. Stop Engine.
Disconnect Spark Wire Before
Making Adjustments.



WARNING



IMPORTANT
Read Owner's Manual
Before Operating
This Machine.



WARNING
Wear Eye Protection



STOP

ASSEMBLY

ASSEMBLY

Read and follow the assembly and adjustment instructions. All fasteners are in the parts bag. Do not discard any parts or material until the unit is assembled.



WARNING: Before doing any assembly or maintenance to the unit, remove the wire from the spark plug.

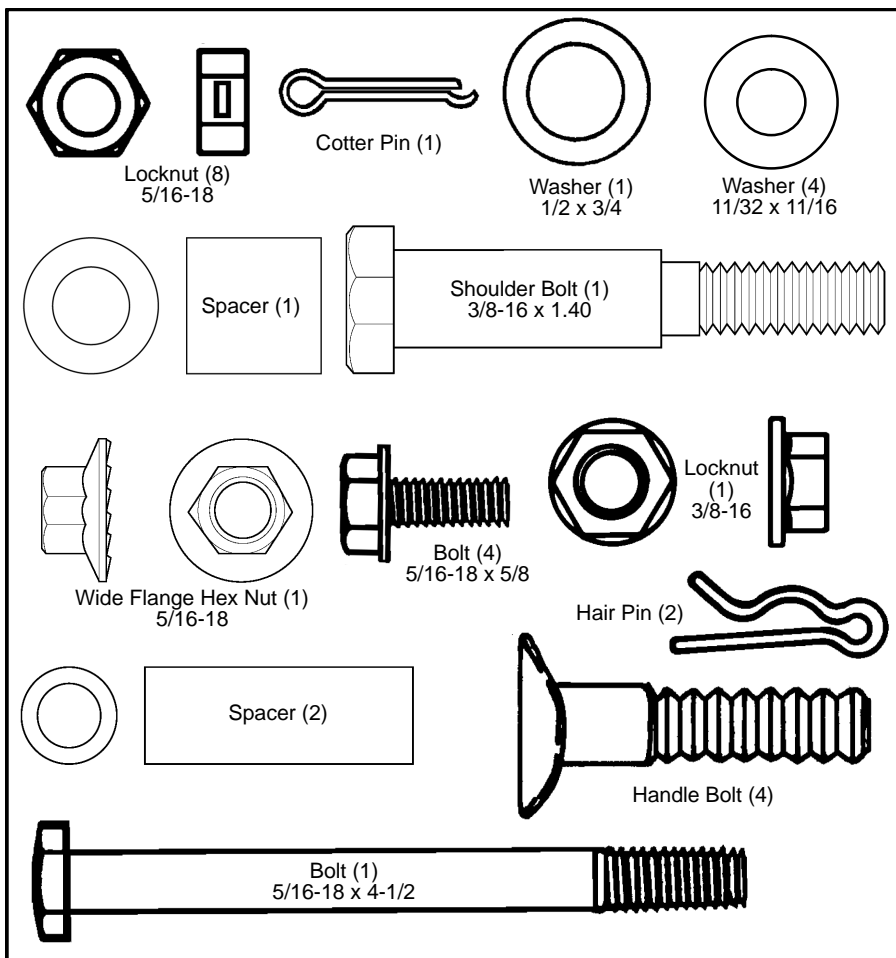
NOTE: Torque is measured in foot pounds (metric N.m). This measurement describes how tight a nut or bolt must be. The torque is measured with a torque wrench.

- 2 - Adjustable Wrenches
- 1 - Utility Knife
- 1 - Blade Type Screwdriver
- 1 - Pliers

PARTS BAG - CONTENTS

The fasteners are shown at full size. The quantities are shown in brackets ().

NOTE: Some models will not use every fastener shown on this page.



ASSEMBLY

Parts Packed Separately In Carton

- 1 - Owner's Manual (not shown)
- 1 - Upper Handle
- 1 - Lower Handle
- 1 - Handle Panel
- 1 - Control Rod
- 4 - Wheels



WARNING: Always wear safety glasses or eye shields while assembling the Edger.

Figure 1 shows the Edger completely assembled.

References to the right or left side of the Edger are from the viewpoint of the operator's position behind the unit.

REMOVE THE EDGER FROM THE CARTON

1. Remove the lower handle, upper handle,

control rod and packing material from the carton.

2. Remove the wheels and parts bag from the carton.
3. Cut down all four corners of the carton.
4. Remove the packing material positioned around the unit.
5. Lift the Edger out of the carton and place on a hard level surface.



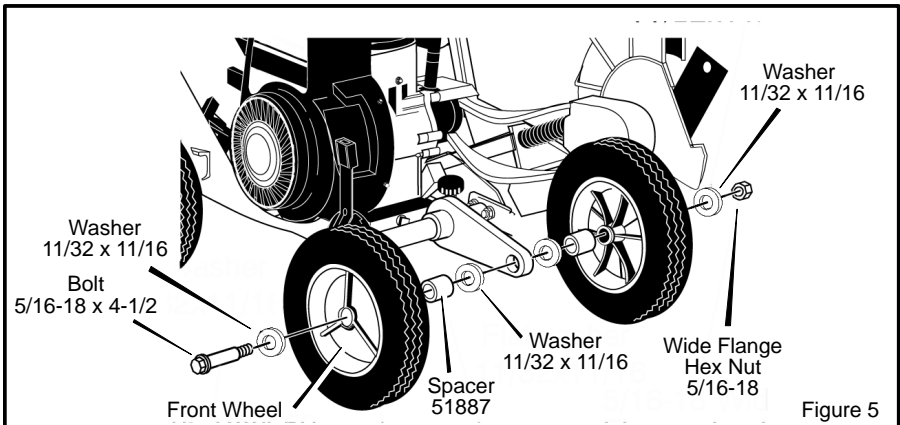
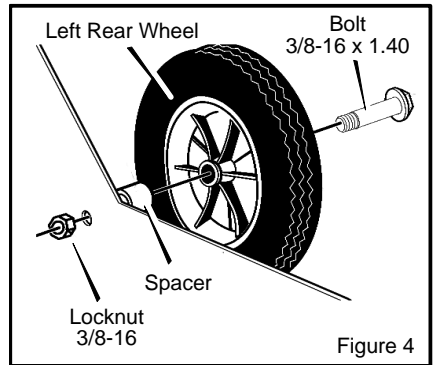
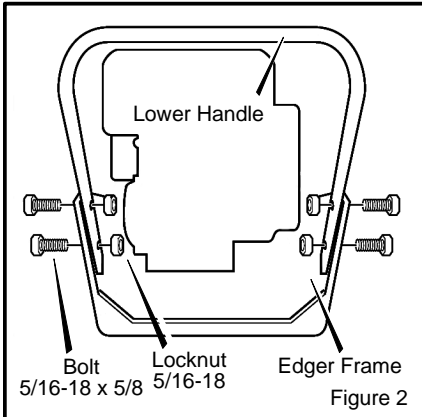
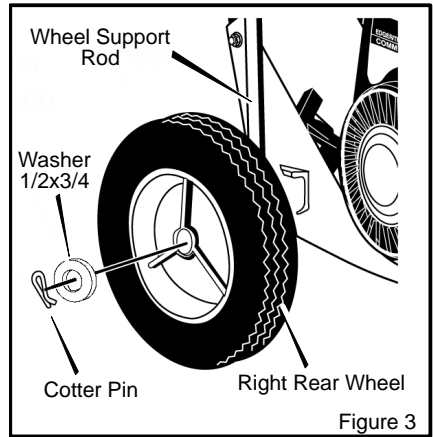
Figure 1

ASSEMBLY

HOW TO ASSEMBLE THE HANDLE

For ease of assembly, attach the lower handle before mounting the wheels.

1. Mount the **lower handle** to the inside of the **edger frame** (see Figure 2). Fasten the **lower handle** with the **fasteners** shown in the illustration. As you tighten the **fasteners**, pull back on the **lower handle**.
2. Attach the **right rear wheel** to the **wheel support rod** with the **fasteners** shown in Figure 3.
3. Attach the **left rear wheel** to the edger frame with the **fasteners** shown in Figure 4.
4. Attach the **front wheels** to the front wheel arm with the **fasteners** shown in Figure 5.



ASSEMBLY

5. Assemble the **upper handle** and the **handle panel** to the **lower handle** with the **fasteners** shown in Figure 7. Make sure the **locknuts** are on the inside of the **lower handle**.
6. Slide one end of the **clutch rod** from left to right through the hole in the **clutch lever**. Secure with the **hair pin** shown in Figure 7.
7. Move the **clutch lever** to the first depth position. Attach the other end of the **control rod** to the **quill support arm** with the **hair pin** as shown in Figure 7.
8. Move the clutch lever back to the "N" NEUTRAL position.
9. When the clutch lever is in NEUTRAL position, the **quill support arm** must be close to the **screw** as shown in Figure 6.

NOTE: If it is difficult to move the clutch lever to the "N" NEUTRAL position, loosen the fasteners that hold the lower handle to the edger frame (see Figure 2). Raise the handle until the clutch lever will easily move to the "N" NEUTRAL position. Tighten the fasteners.

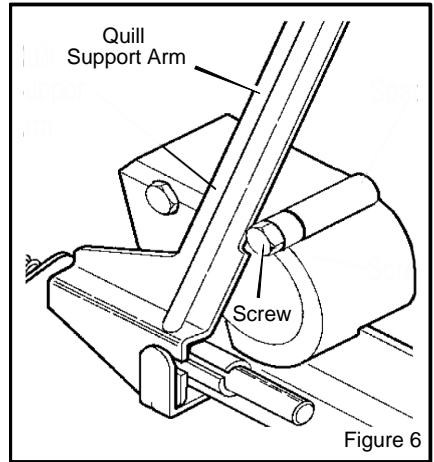


Figure 6

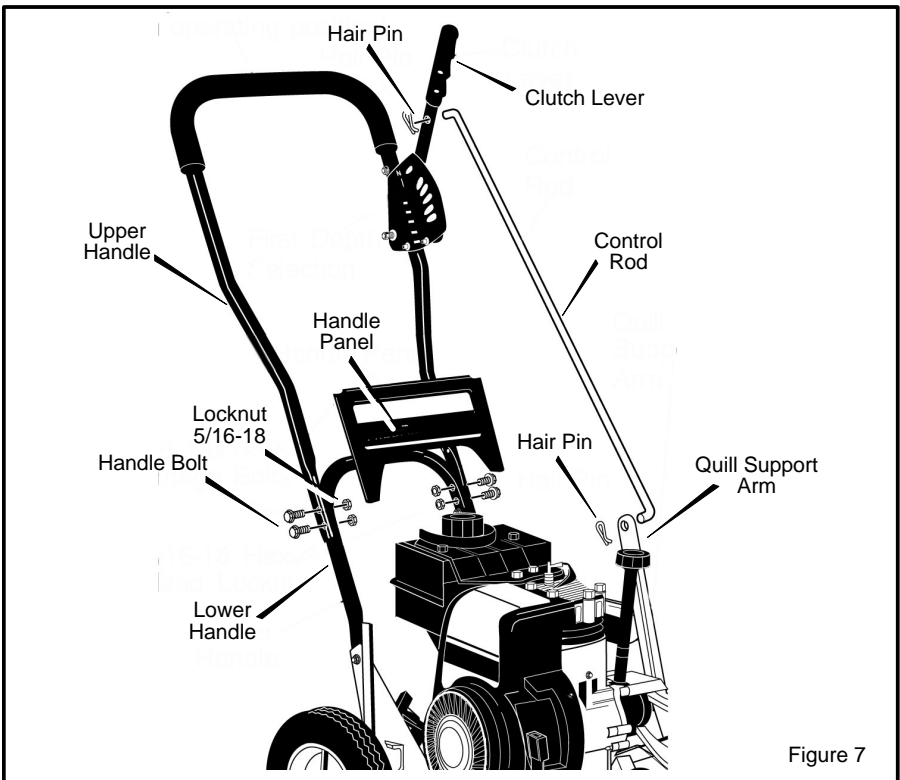


Figure 7

ASSEMBLY

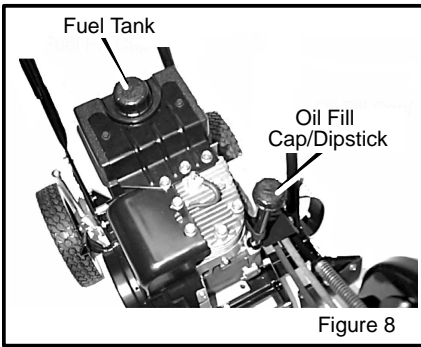
HOW TO PREPARE THE ENGINE

ENGINE DOES NOT CONTAIN OIL OR GASOLINE

See the engine manufacturer's instructions for the type of gasoline and oil to use. Before you use the unit, read the information on safety, operation, maintenance, and storage.

To fill the crankcase, remove the oil fill cap/dipstick and add SAE30 motor oil. **DO NOT OVERFILL.**

NOTE: The engine may contain a small amount of oil. When adding oil, frequently insert the oil fill cap/dipstick and check the amount of oil in the engine. DO NOT OVERFILL.



WARNING: Follow the engine manufacturer's instructions for the type of gasoline and oil to use. Always use a safety gasoline container. Do not smoke when adding gasoline to the engine. When inside an enclosure, do not fill with gasoline. Before you add gasoline, stop the engine. Let the engine cool for several minutes.

IMPORTANT: This unit is equipped with an internal combustion engine and must not be used on or near any unimproved forest-covered, brush-covered or grass-covered land unless the engine's exhaust system is equipped with a spark arrester meeting applicable local or state laws (if any). If a spark arrester is used, it must be maintained in effective working order by the operator.

In the State of California the above is required by law (Section 4442 of the California Public Resources Code). Other states may have similar laws. Federal laws apply on federal lands. See an Authorized Service Center for a spark arrester for the muffler.

✓ CHECKLIST

For the best performance and satisfaction from this quality product, please review the following checklist before you operate the Edger:

- ✓ All assembly instructions have been completed.
- ✓ Check carton. Make sure no loose parts remain in the carton.
- ✓ All fasteners have been properly tightened.

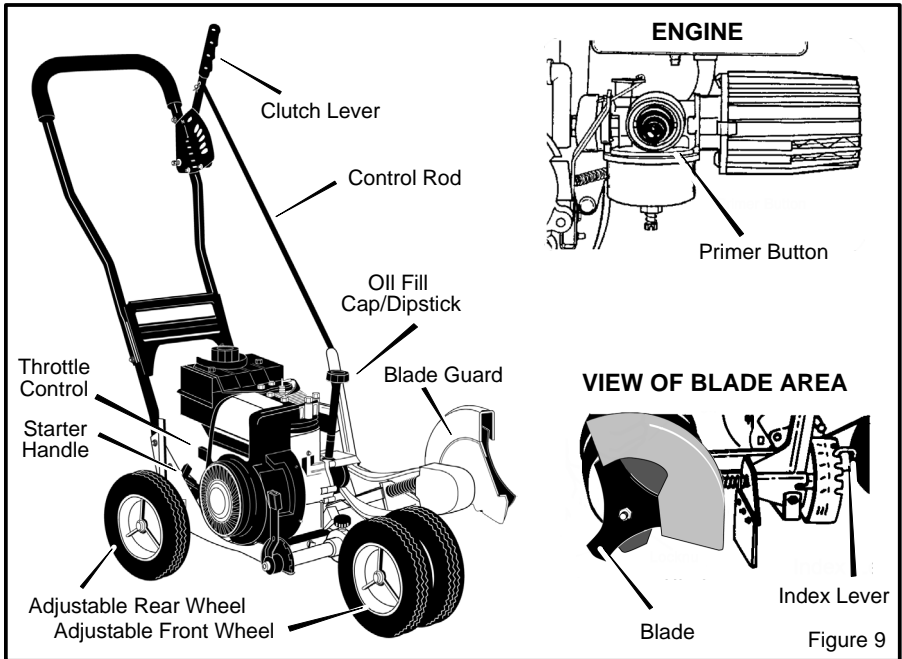
As you learn how to use the Edger, pay extra attention to the following important items:

- ✓✓ Engine oil is at proper level.
- ✓✓ Fuel tank is filled with a fresh, clean, regular Unleaded gasoline.
- ✓✓ Become familiar and understand the function of all controls. Before your start the engine, operate all controls.

OPERATION

KNOW YOUR EDGER

READ THE OWNER'S MANUAL AND ALL SAFETY RULES BEFORE YOU OPERATE the Edger. To familiarize yourself with the location of the controls, compare the illustrations with your Edger. **Save this manual for future reference.**



Throttle Control - Controls the engine speed.

Primer Button - Injects fuel directly into the carburetor for faster starts.

Clutch Lever - Use to start and stop the blade and control the depth of cut.

Adjustable Rear Wheel - Right rear wheel is adjustable to level the Edger when edging along a curb (curb-hopping).

Adjustable Front Wheel - Front wheel is adjustable from side-to-side for balance.

The front wheel can also be adjusted down for curb-hopping .

Recoil Starter Handle - The engine is equipped with an easy pull recoil starter.

Blade Guard - Use to prevent stones or other material from being thrown at the operator.

Index Lever - Permits adjustment from the edging (vertical) position to the trimming (horizontal) position. To change position, pull the index lever and rotate the quill assembly to the desired angle or position.

EYE PROTECTION

Always wear safety glasses. If you wear eye glasses, put a Wide Vision Safety Mask over your eye glasses.



WARNING: Debris thrown from the Edger can result in foreign objects being thrown into the eyes, which can cause severe eye damage. Always wear safety glasses or eye shields when operating the Edger.

OPERATION

HOW TO STOP THE EDGER

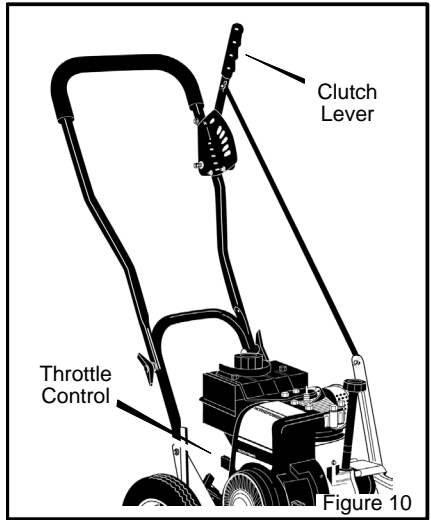
1. Move the **clutch lever** back to the DIS-ENGAGED position. Then, move the **throttle control** to the STOP position. See Figure 10.



WARNING: Never leave the EDGER unattended while the engine is running. Always disengage the cutting blade and stop the engine.

HOW TO USE THE THROTTLE CONTROL

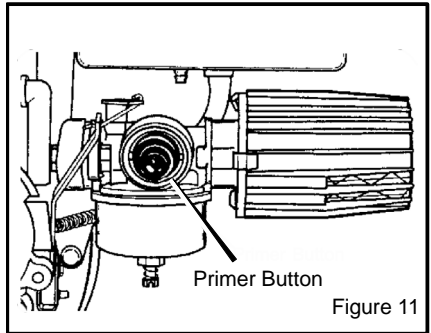
1. During normal use, run the engine at full speed.
2. Move the **throttle control** up to increase engine speed, or down to decrease engine speed (see Figure 10).



HOW TO USE THE PRIMER BUTTON

When starting a cold engine, push the **primer button** five times (see Figure 11). Wait approximately two seconds between each push.

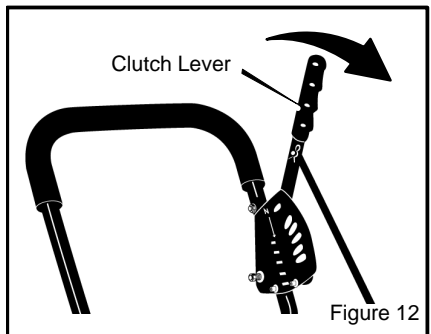
IMPORTANT: When starting a warm engine, do not use the primer button.



HOW TO USE THE CLUTCH LEVER

1. Start the engine.
2. To engage the cutting blade, move the **clutch lever** forward (see Figure 12).
3. Select the edging depth you need. There are five selections down to approximately 2-3/4 inches deep.

NOTE: For deep edging, first cut at shallow depths. Then, cut at greater depths until the desired depth is obtained.




OPERATION

HOW TO USE THE INDEX LEVER

1. Stop the engine and disconnect the spark plug wire from the spark plug.
2. Loosen the **front wheel knob** shown in Figure 13. Slide the **front wheel** all the way to the right side.
3. Securely tighten the **front wheel knob**.

NOTE: To prevent the blade from hitting the wheel while trimming, make sure the front wheel is set in the extreme right position.

4. Disengage the **index lever** (see Figure 14). Move the **index lever** to the notch marked 90°.
5. Reconnect the spark plug wire to the spark plug.
6. Start the engine.
7. Move the clutch lever to the desired trimming height.

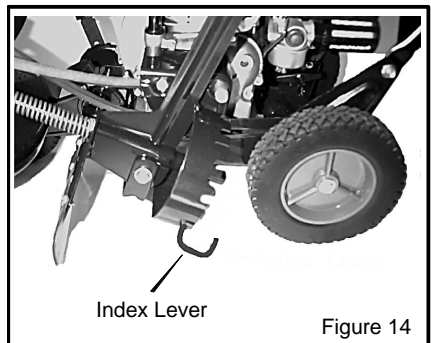
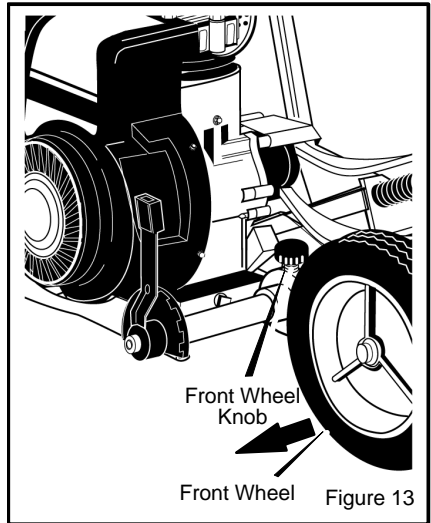
 **WARNING: While the engine is running, never leave the Edger. Before you adjust the wheels or change the blade position, always disengage the cutting blade and stop the engine.**

How To Use The Bevel Edging Feature

The index lever has four other positions that will provide a beveled edge. A bevel edge cut along a sidewalk or driveway makes a trench and will reduce the need to edge as often. The larger the degree of cut set with the index lever, the larger the trench.

1. With the engine off, move the front wheel far enough to the right to clear the blade.
2. Move the index lever to the desired position.

3. Before you start the engine, line up the edger as if you were going to bevel cut. Move the clutch lever down to test the blade location. Return the clutch lever to the "N" NEUTRAL position.
4. Start the engine and move the clutch lever to the desired depth of cut.



OPERATION

HOW TO USE THE CURB-HOPPING FEATURE

Because the front wheel and the right rear wheel are adjustable, the Edger can be used on uneven surfaces, such as the curb shown in Figure 15. Set the wheel positions as follows.

1. Stop the engine.
2. Disconnect the spark plug wire from the spark plug.
3. Loosen the **front wheel knob**.
4. Slide the **front wheel** to the best position to clear the curb and balance the unit.
5. Securely tighten the **front wheel knob**.
6. Use the **curb height adjust lever** to lower the **front wheel**. Lower the **front**

wheel until the **front wheel** is level with the left rear wheel and the unit is setting on the curb as shown in Figure 15.

7. Loosen the **rear wheel knob**.
8. Lower the **right rear wheel** until the Edger is level and the left rear wheel is on the curb.
9. Securely tighten the **rear wheel knob**.
10. Connect the spark plug wire to the spark plug.



WARNING: Keep away from the rotating blade. The blade can cause injury.

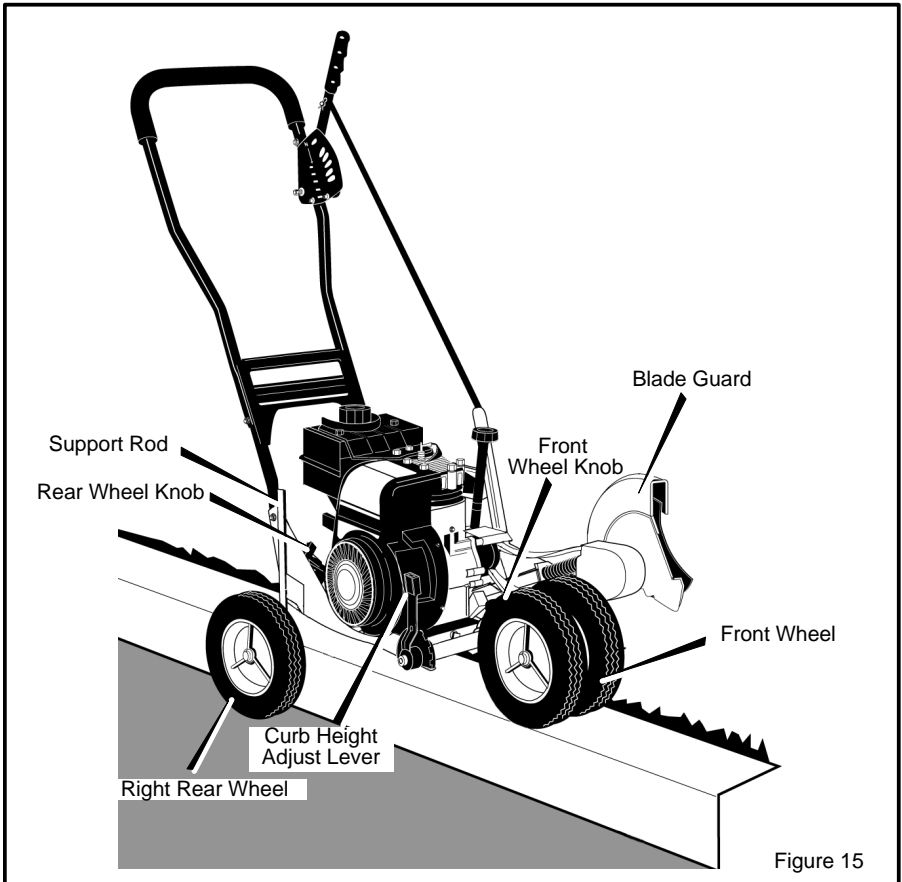


Figure 15

OPERATION

HOW TO STOP THE ENGINE

To stop the engine, move the clutch lever all the way back to the DISENGAGED position. Then, push the throttle control lever down to the STOP position.

If the engine will not stop, hold a screwdriver against the spark plug and against the engine cooling fins. The spark will go to ground and the engine will stop.

HOW TO START THE ENGINE

IMPORTANT: Before you start the engine, operate the controls several times. Make sure all controls move freely.

1. Check the oil.
2. Fill the fuel tank with regular unleaded gasoline. Make sure the gasoline is clean. Leaded gasoline will increase deposits and shorten the life of the valves.

NOTE: Do not use gasohol or methanol. Do not use premium unleaded gasoline.



WARNING: Always use a safety gasoline container. Do not smoke when adding gasoline to the fuel tank. When inside an enclosure, do not add gasoline. Before you add gasoline, stop the engine and let the engine cool for several minutes.

3. Make sure the spark plug wire is connected to the spark plug.
4. Pull the clutch lever all the way back to raise and disengage the blade.
5. Move the throttle control lever to the FAST position.
6. Some models have a primer button on the front or side of the engine (Figure 16). Every time you push the primer button, wait two seconds. For the number of times required to push the primer button, see the engine manufacturer's instructions.

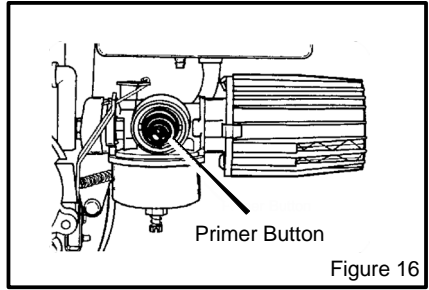


Figure 16

NOTE: Do not use the primer button to start a warm engine.

7. To start engine, hold the recoil starter handle firmly with your right hand.
8. Hold the edger handle firmly with your left hand.
9. Quickly pull the recoil starter handle. DO NOT allow the starter rope to snap back. Let the starter rope slowly rewind. If engine fails to start after three pulls, push primer button two times and again pull the recoil starter handle.
10. When the engine starts, move the throttle control lever up (FAST position) to increase speed or down to decrease speed. During normal use keep the throttle in the FAST position.
11. If the engine does not start in 5 or 6 tries, See the "Trouble Shooting Instructions".

NOTE: The cutting blade speed is controlled by the engine speed. To reduce the cutting blade speed, push down on the throttle control lever. To increase the cutting blade speed, pull up on the throttle control lever.



WARNING: Never run the engine indoors or in a poorly ventilated area. Engine exhaust contains carbon monoxide, an odorless and deadly gas. Keep hands, feet, hair and loose clothing away from any moving parts. Avoid the muffler and surrounding areas. Temperatures can exceed 150 degrees.

OPERATION

EDGING TIPS

- Edging is best performed when conditions are dry. If the soil is too wet, dirt becomes packed around the blade causing premature belt wear and decreased performance.
- If dirt does become packed around the blade, stop the engine and remove the wire from the spark plug. Remove the packed dirt and debris from the blade.
- For deep edging, first cut at shallow depths. Then, cut at greater depths until the desired depth is obtained.
- For uniform edging, make sure the blade guide rides on the surface.
- Edging can be customized by varying the number of passes and by the distance the blade is from the surface.



WARNING: Read the Owner's manual. Know location and functions of all controls. Keep all safety devices and shields in place. Never allow children or uninstructed adults to operate Edger. Shut off engine before unclogging blade or making repairs. Keep bystanders away from machine. Keep away from the blade all rotating parts, which cause injury.

MAINTENANCE

CUSTOMER RESPONSIBILITIES

SERVICE RECORDS Fill in dates as you complete regular service.	After First 2 Hours	Before Each Use	Often	Every 10 Hours	Every 25 Hours	Before Each Season	Before Storage	SERVICE DATES
Lubricate All Pivot Points				√			√	
Lubricate Wheel Axles					√		√	
Check Engine Oil Level		√						
Check Spark Plug					√	√		
Check Drive Belt			√					
Tighten All Fasteners	√		√					
Check Blade For Wear Or Damage			√					
Lubricate Quill Rod/ tube				√		√	√	

GENERAL RECOMMENDATIONS

The warranty on this Edger does not cover items that have been subjected to operator abuse or negligence. To receive full value from the warranty, the operator must maintain the Edger as instructed in this manual.

Some adjustments must be made periodically to properly maintain your Edger.

All adjustments in the Service and Adjustments section of this manual must be checked at least once each season.

ENGINE MAINTENANCE

Use the following maintenance section to keep your unit in good operating condition. All the maintenance information for the engine is in the "Engine Instruction Book". Before you start the engine, read this book.

LUBRICATION

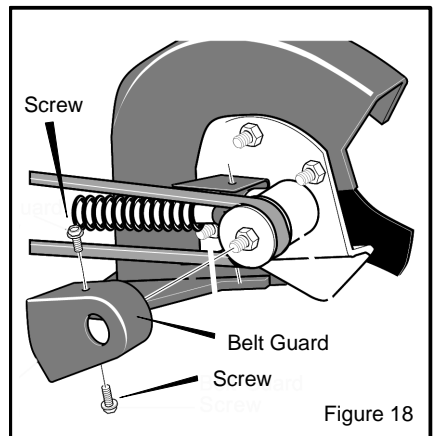
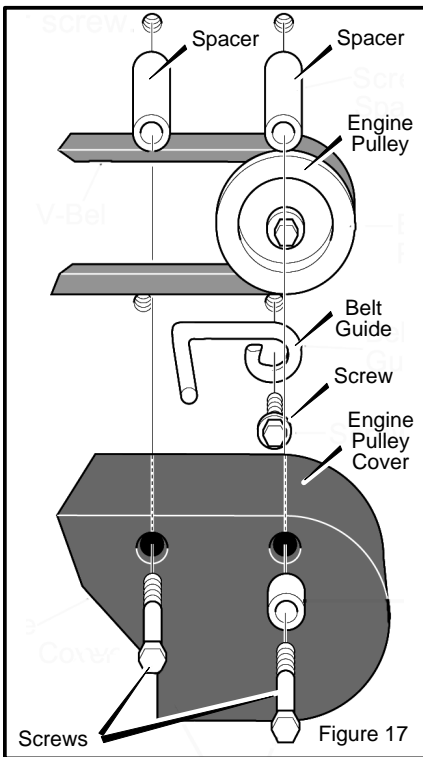
1. After each 25 hours, apply a small amount of engine oil to all moving parts, particularly the wheels.
2. To lubricate the engine, refer to the "Engine Instruction Book".

SERVICE AND ADJUSTMENT

HOW TO REMOVE THE BELT

The belt made of a special compound. If the belt becomes worn or breaks, replace the belt with an original equipment belt.

1. Disconnect the spark plug wire from the spark plug.
2. Pull the clutch lever back to release the tension from the belt.
3. Remove the two **screws** and **spacers** from the top of the **engine pulley cover**. Remove the **engine pulley cover** (see Figure 17).
4. Loosen, do not remove, the **screw** that holds the **belt guide**. Then, move the **belt guide** away from the **belt**.
5. Remove the **screws** from the **belt guard** (see Figure 18).
6. Remove the old **belt** from the engine and quill assembly pulleys. Replace with an original equipment belt.
7. To install a new belt, reverse the above steps.



SERVICE AND ADJUSTMENT

HOW TO REPLACE THE BLADE

The blade is subject to wear and damage, such as nicks and dents. This will not generally affect its function.

The blade is designed to not require sharpening. Do not attempt to sharpen the blade. The blade is also reversible. If nicks or dents are excessive, remove the blade and turn it around. This will provide a fresh cutting edge. Replace the blade if both sides are worn or damaged.



WARNING: Do not sharpen the blade. Sharpening can damage the blade and cause it to break, which can cause injury to yourself or to others.

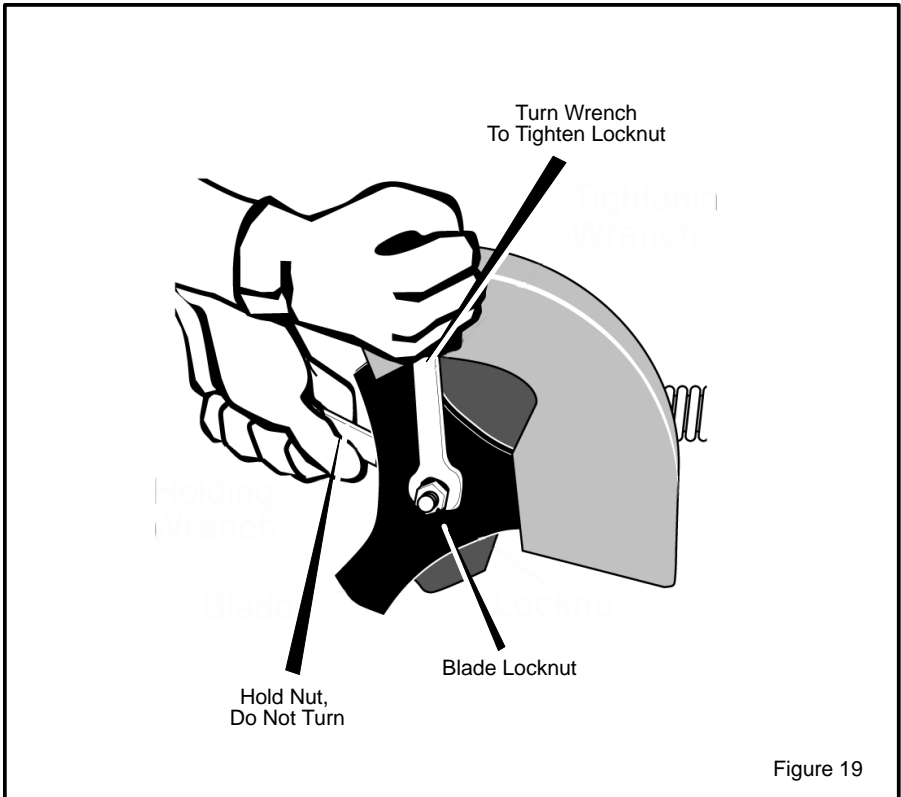
To replace the **blade**, follow the steps below.

1. Disconnect the spark plug wire from the spark plug.
2. Remove the **blade locknut** that holds the **blade** to the drive shaft.



WARNING: To remove or tighten the blade locknut, always use the method shown in Figure 19. Always position the holding wrench on the nut behind the blade.

3. Remove the **blade**.
4. Install a new **blade** and **blade locknut**. Tighten the **blade locknut** to a torque of 40-45 foot pounds.



SERVICE AND ADJUSTMENT

STORAGE



WARNING: Never store the Edger indoors with fuel in the fuel tank. Never store in an enclosed, poorly ventilated area where fumes could reach an open flame, a spark or a pilot light as on a furnace, water heater or clothes dryer.



WARNING: Do not remove gasoline while inside a building, near a fire, or while you smoke. Gasoline fumes can cause an explosion or a fire.

When the Edger is put in storage for thirty days or more, follow the steps below to make sure the Edger is in good condition the following season.

1. Drain the fuel tank.
2. Let the engine run until it is out of gasoline.
3. Drain the oil from the warm engine. Fill the engine crankcase with new oil.
4. Remove the spark plug from the cylinder. Pour one ounce of oil into the cylinder.

der. Slowly pull the recoil-start grip so that the oil will protect the cylinder. Install a new spark plug in the cylinder.

5. Clean the dirt and debris from the cylinder cooling fins and the engine housing.
6. Completely clean the Edger.
7. Check the Edger for worn or damaged parts. Tighten all loose hardware.
8. Apply a small amount of engine oil to all moving parts, particularly the wheels.
9. Put the unit in a building that has good ventilation.
10. Cover the Edger with a suitable protective cover that does not retain moisture. Do not use plastic.

IMPORTANT: Never cover the Edger while the engine and exhaust areas are still warm.

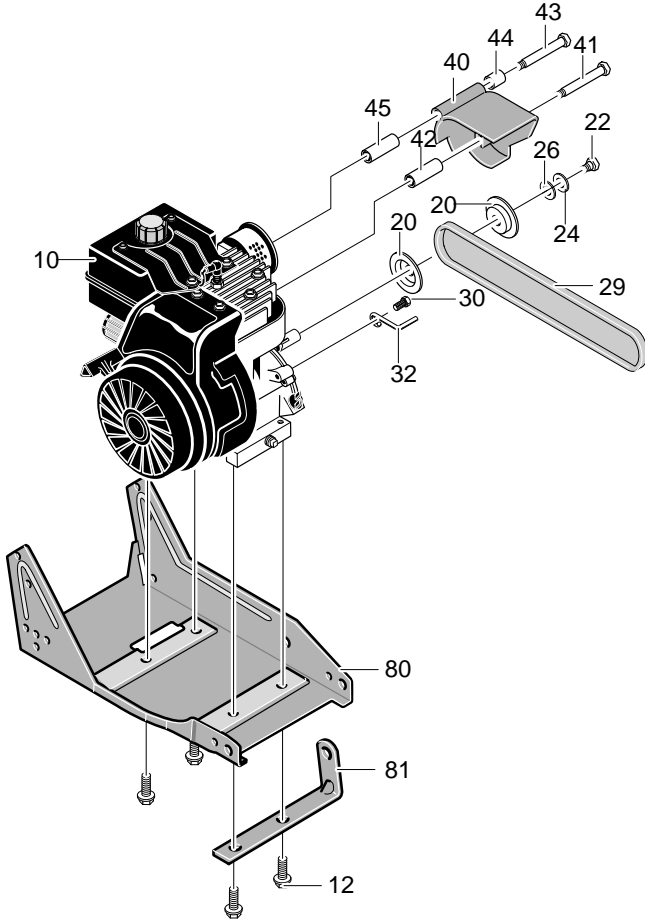
NOTE: A yearly checkup or tune-up by an Authorized Service Center is a good way to make sure that your Edger will provide maximum performance for the next season.

TROUBLESHOOTING CHART

TROUBLE	CAUSE	CORRECTION
Engine difficult to start or Engine runs erratically or Engine will not run at full speed	Stale fuel	Drain fuel tank. Fill with fresh fuel.
	Clogged fuel filter	Replace fuel filter
	Dirt in fuel tank or out of fuel	Clean fuel tank.
	Carburetor out of adjustment	See Carburetor Adjustment section.
	Fouled spark plug	Clean and set spark plug gap.
	Dirty air filter	Replace air filter.
Engine smokes excessively	Plugged air filter	Replace air filter.
Cutting blade will not rotate	Debris interfering with blade	Clean debris from blade.
	Loose blade	Tighten blade nut.
	Defective V-belt	Replace V-belt.
Blade will not cut properly	Defective quill bearings	Replace the quill assembly.
	Damage or worn blade	Reverse the blade or replace the blade.
Excessive vibration	Loose parts	Stop engine immediately. Tighten all fasteners. If vibration continues, take the unit to an Authorized Service Center.

MODEL LE389

FACTORY NO. 13051x37NA

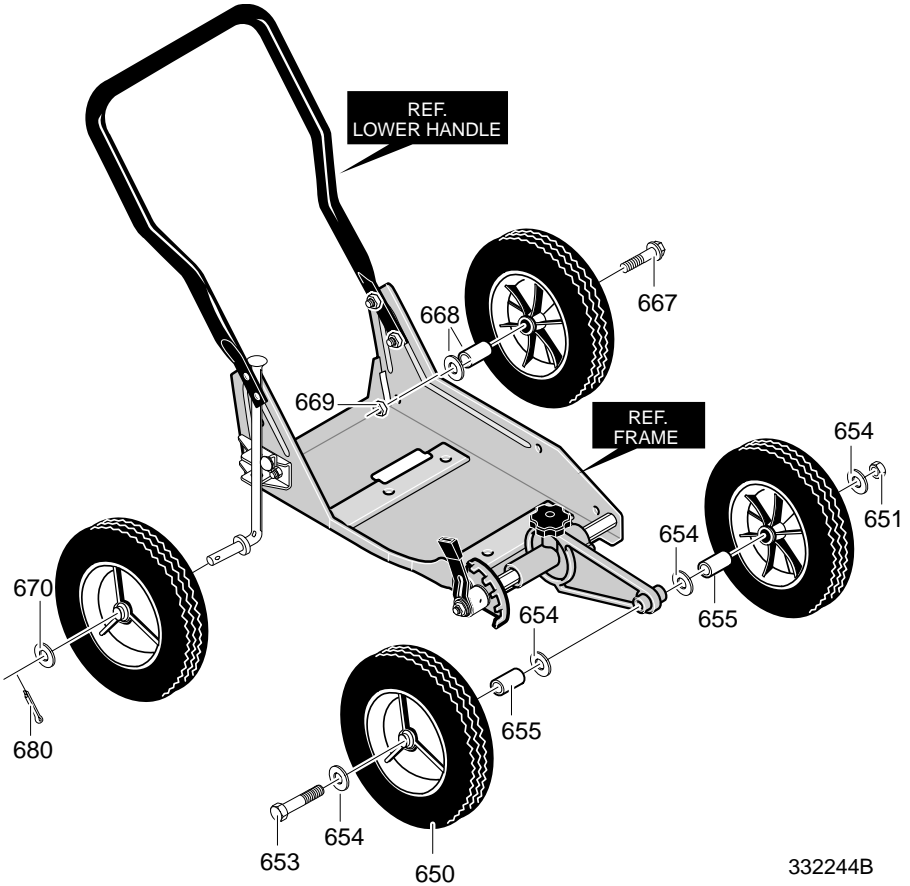


323095F

KEY NO.	PART NO.	DESCRIPTION	KEY NO.	PART NO.	DESCRIPTION
10	-----	Engine	40	601 00 22 04	Cover, Engine Pulley
12	601 00 08 35	Screw, 3/8-16x1.00	41	601 00 00 80	Screw, 5/16-24x3.00
20	601 00 22 03	Pulley, Half	42	601 00 22 05	Spacer, Sleeve
22	601 00 13 27	Screw, 5/16-24x1.00	43	601 00 22 06	Screw, 5/16-24x3.75
24	601 00 00 23	Washer	44	601 00 22 07	Spacer
26	601 00 05 47	Flatwasher	45	601 00 22 05	Spacer, Sleeve
29	601 00 05 09	Belt, V4L 32.60LG	80	601 00 22 08	Frame, Assy. Edger
30	601 00 14 33	Screw and Washer Assy	81	601 00 22 09	Strap
32	601 00 05 80	Guide, Belt	--	601 00 24 69	Instruction Manual

MODEL LE389

FACTORY NO. 13051x37NA

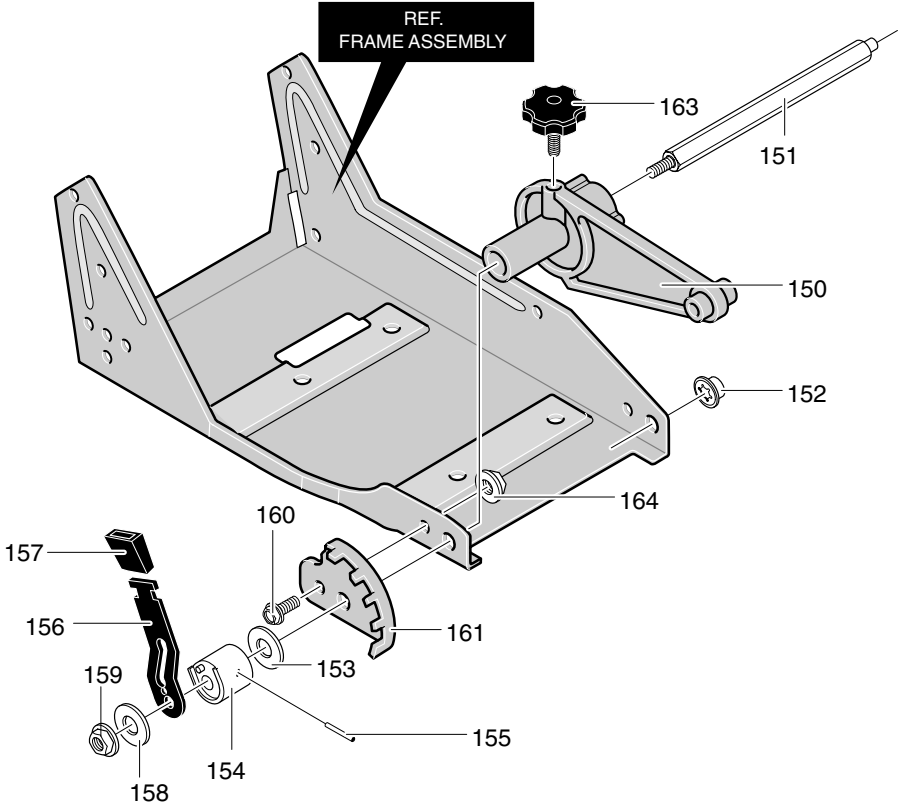


332244B

KEY NO.	PART NO.	DESCRIPTION	KEY NO.	PART NO.	DESCRIPTION
650	601 00 22 49	Tire & Rim	667	601 00 22 50	Bolt, SHH 3/8-16
651	601 00 08 67	Nut, 5/16-18	668	601 00 22 51	Spacer & Washer
653	601 00 00 86	Screw, 5/16-18x4.50	669	601 00 05 42	Nut, 3/8-16
654	601 00 00 19	Flatwasher	670	601 00 01 09	Flatwasher
655	601 00 05 87	Spacer, Sleeve	680	601 00 00 25	Cotter Pin

MODEL LE389

FACTORY NO. 13051x37NA

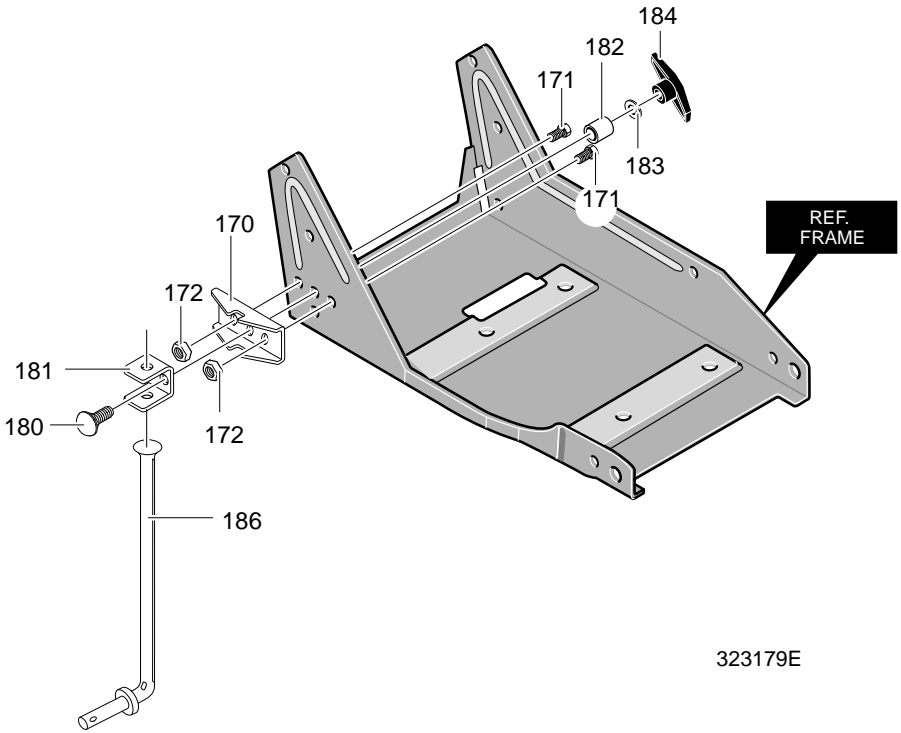


331765E

KEY NO.	PART NO.	DESCRIPTION	KEY NO.	PART NO.	DESCRIPTION
150	601 00 22 33	Front Wheel Arm	157	601 00 22 40	Knob,Rectangle
151	601 00 22 34	Rod, Front Mount Curb	158	601 00 00 94	Flatwasher
152	601 00 22 35	Pushnut, Washer	159	601 00 22 41	Nut
153	601 00 22 36	PlasticWasher	160	601 00 22 27	Screw 5/16x18x.63
154	601 00 22 37	Spacer, Height Adjust	161	601 00 22 42	Plate, Height Adjust
155	601 00 22 38	Pin, Spring	163	601 00 22 43	Knob,Molded
156	601 00 22 39	Lever, Height Adjust	164	601 00 08 67	Nut, 5/16x18

MODEL LE389

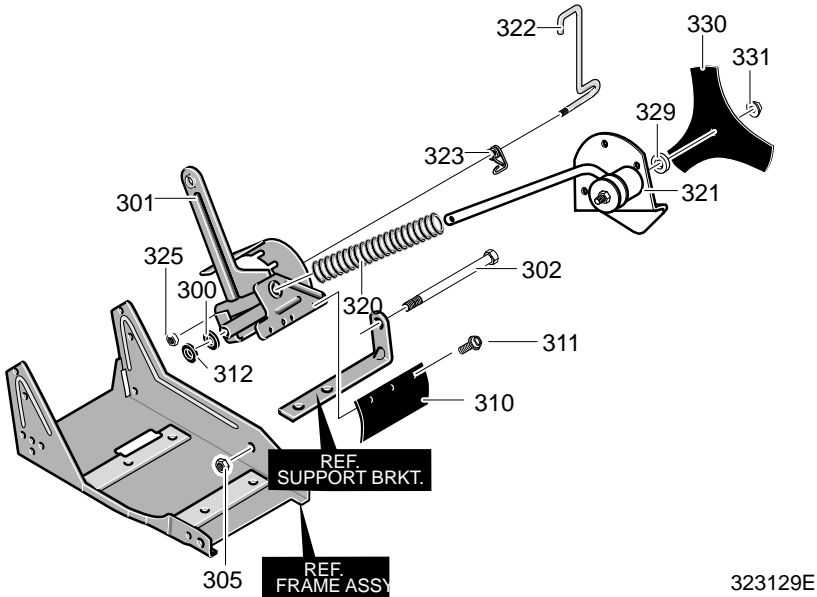
FACTORY NO. 13051x37NA



KEY NO.	PART NO.	DESCRIPTION	KEY NO.	PART NO.	DESCRIPTION
170	601 00 06 47	Bracket, Curb Hop Mnt	182	601 00 19 71	Spacer, Sleeve
171	601 00 00 73	Screw, 5/16-18x.75	183	601 00 00 19	Flatwasher
172	601 00 00 59	Nut, 5/16-18	184	601 00 06 84	Knob, Wing 5/16-18
180	601 00 19 70	Bolt, 5/16-18x2.00	186	601 00 19 72	Rod, Wheel Support
181	601 00 06 55	Clevis			

MODEL LE389

FACTORY NO. 13051x37NA

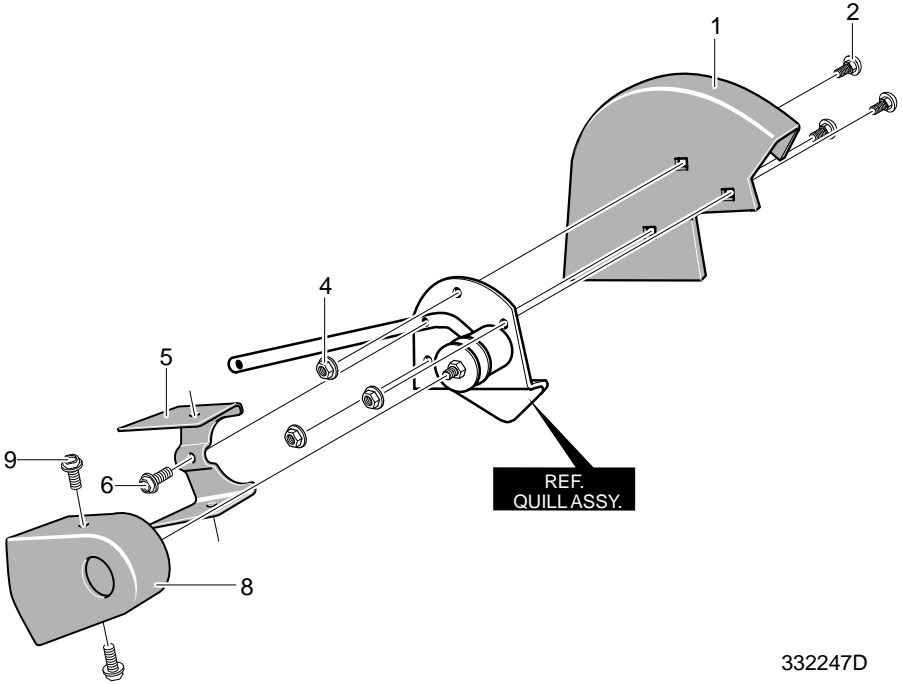


323129E

KEY NO.	PART NO.	DESCRIPTION	KEY NO.	PART NO.	DESCRIPTION
300	601 00 00 21	Flatwasher	321	601 00 21 97	Quill Assembly
301	601 00 21 96	Quill Support	322	601 00 22 44	Lever, Index
302	601 00 22 16	Bolt, 3/8-16	323	601 00 22 45	Spring, Torsion
305	601 00 24 07	Nut, 3/8-16	325	601 00 22 59	Nut, 5/16-18
310	601 00 22 17	Rubber Deflector	329	601 00 00 94	Flatwasher
311	601 00 22 18	Screw, 10-16x1.50	330	601 00 22 46	Blade, Edger
312	601 00 22 13	Flatwasher	331	601 00 05 52	Nut, 1/2-20
320	601 00 23 14	Spring, Compression			

MODEL LE389

FACTORY NO. 13051x37NA

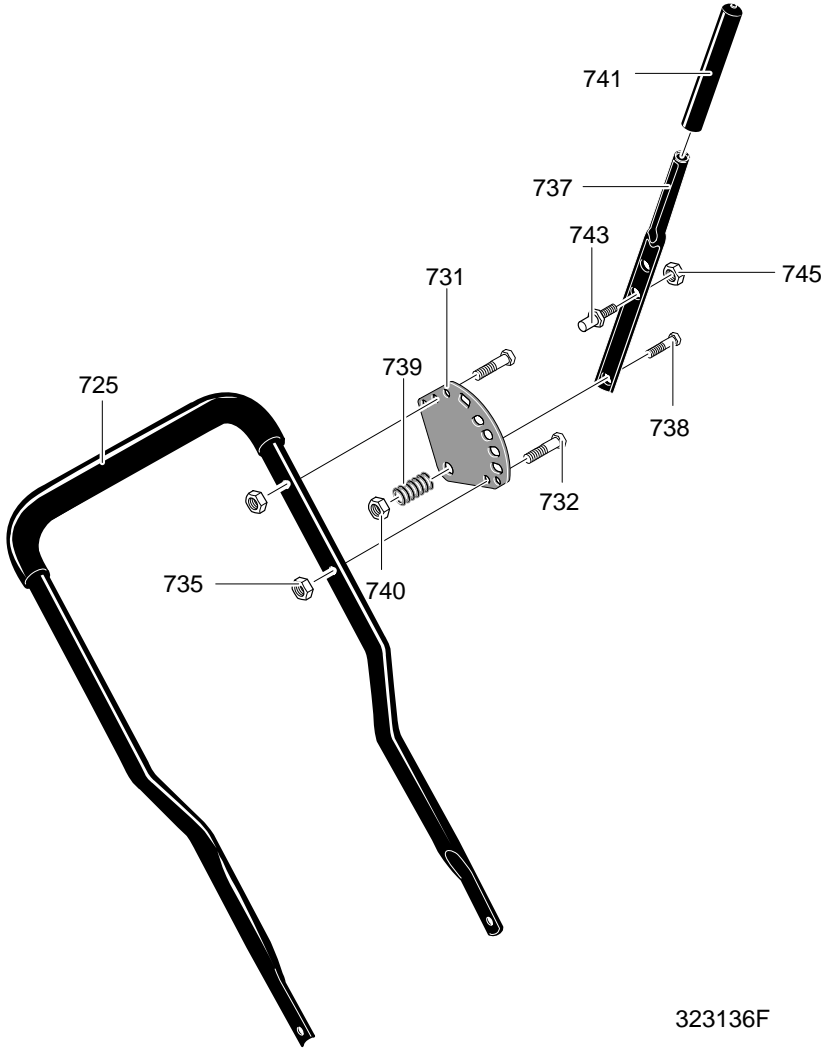


332247D

KEY NO.	PART NO.	DESCRIPTION
1	601 00 22 10	Blade Guard
2	601 00 07 86	Bolt, Carriage 5/16-18x.63
4	601 00 08 67	Nut, 5/16-18
5	601 00 22 11	Guide, Belt Front
6	601 00 21 95	Screw, 1/4-20x.50
8	601 00 19 78	Cover, Quill Pulley
9	601 00 24 70	Screw, 10-16x.50

MODEL LE389

FACTORY NO. 13051x37NA



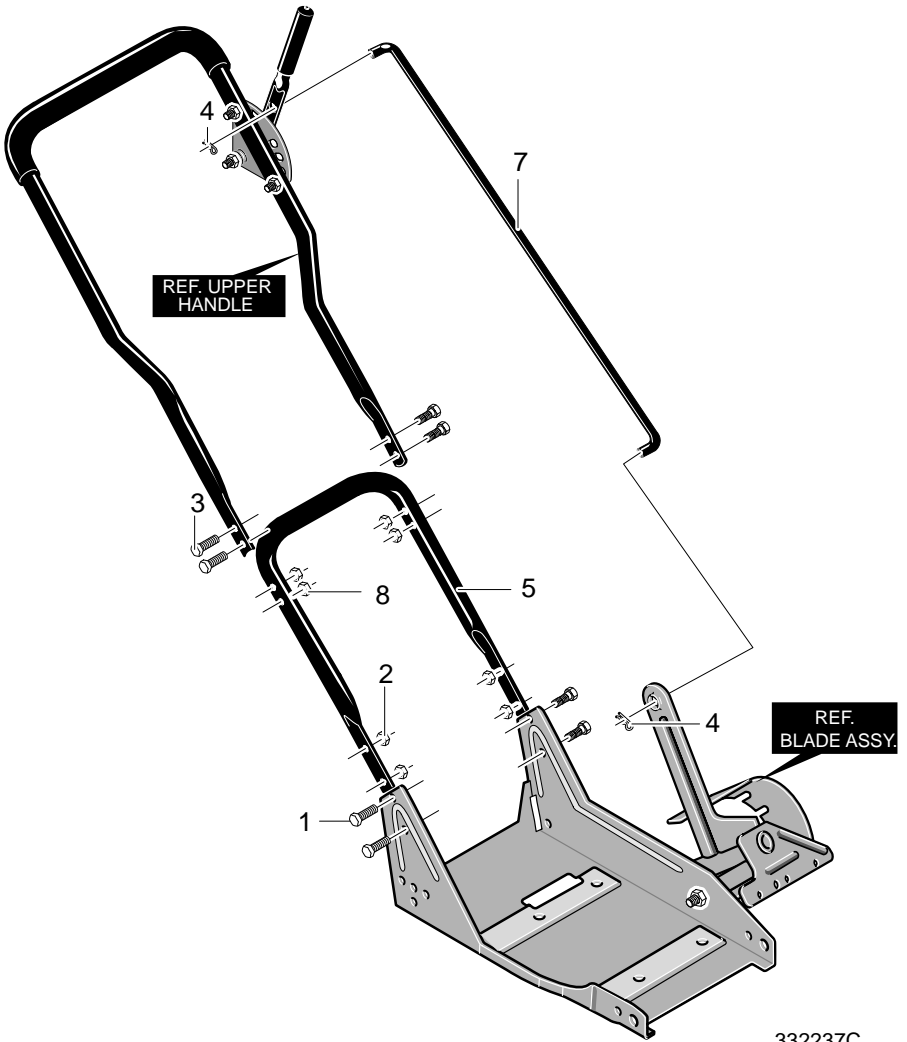
323136F

KEY NO.	PART NO.	DESCRIPTION
725	601 00 21 98	Upper Handle & Foam
731	601 00 22 22	Selector Plate
732	601 00 00 69	Screw, 1/4-20x1.25
735	601 00 23 18	Nut, 1/4-20
737	601 00 22 23	Depth Adjust Handle
738	601 00 19 84	Screw, 5/16-18x1.25

KEY NO.	PART NO.	DESCRIPTION
739	601 00 01 01	Spring, Compression
740	601 00 00 59	Nut, 5/16-18
741	601 00 22 48	Grip, Hand
743	601 00 22 25	Stud
745	601 00 24 07	Nut, 3/8-16

MODEL LE389

FACTORY NO. 13051x37NA

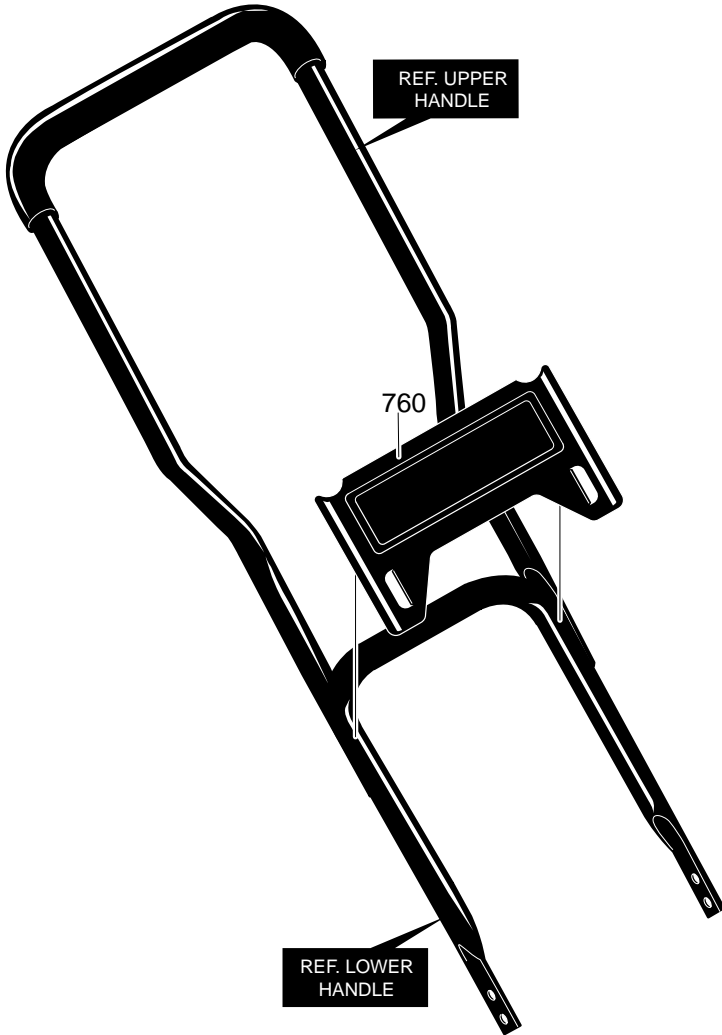


332237C

KEY NO.	PART NO.	DESCRIPTION	KEY NO.	PART NO.	DESCRIPTION
1	601 00 22 27	Screw, 5/16-18x.63	5	601 00 22 28	Lower Handle
2	601 00 00 59	Nut, 5/16-18	7	601 00 22 47	Control Rod
3	601 00 12 94	Bolt, 5/16-18x1.63	8	601 00 00 59	Nut 5/16-18
4	601 00 05 23	Hair Pin			

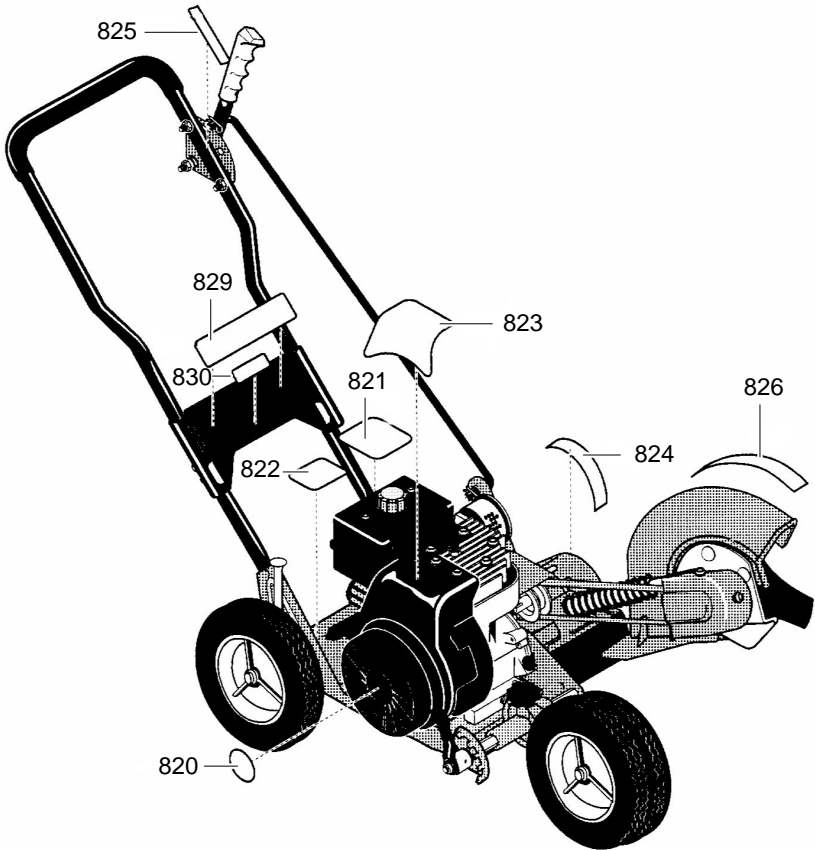
MODEL LE389

FACTORY NO. 13051x37NA



332228B

KEY NO.	PART NO.	DESCRIPTION
760	601 00 22 26	Panel, Handle



KEY NO.	PART NO.	DESCRIPTION
820	601 00 22 00	Decal, Recoil Cover
821	601 00 18 77	Decal, Information Danger
822		Reference Only
823	601 00 22 52	Decal, Engine
824	601 00 22 29	Decal, Angle Indicator
825	601 00 22 30	Decal, Quadrant Selector
826	601 00 22 31	Decal, Blade Guard
829	601 00 20 96	Decal, Panel
830	601 00 22 53	Decal, Husqvarna LE389