

Art. 7765
Art. 7766

- D** **Gebrauchsanweisung**
Bachlauf-Set
-
- GB** **Operating Instructions**
Stream Set
-
- F** **Mode d'emploi**
Kit « Cascade » complet
-
- NL** **Gebruiksaanwijzing**
Beekset
-
- S** **Bruksanvisning**
Bäcksats
-
- I** **Istruzioni per l'uso**
Set ruscello
-
- E** **Manual de instrucciones**
Set para recorridos de agua
-
- P** **Instruções de utilização**
Conjunto para ribeiro
-
- DK** **Brugsanvisning**
Vandløbssæt

D

GB

F

NL

S

I

E

P

DK

GARDENA Stream Set

Welcome to GARDENA.aquamotion...



Please read these operating instructions carefully and follow the instructions. Use the instructions to familiarise yourself with the Stream Set, using it correctly and the safety information.



For safety reasons, children and young people under 16 years of age and people who are not acquainted with these operating instructions, should not use this Stream Set.

→ Please keep these operating instructions in a safe place.

Contents

1. Applications Range of Your GARDENA Stream Set	10
2. For Your Safety	10
3. Initial Operation	12
4. Maintenance	13
5. Trouble-Shooting	14
6. Storage	15
7. Accessories	15
8. Technical Data	15
9. Service	16

1. Applications Range of Your GARDENA Stream Set

Intended use

The GARDENA Stream Set is intended for domestic use in your house or garden, it is designed solely for garden design with its own water circuit. GARDENA *lightline* Path Lights are exclusively designed for use in the garden.

Please note



The GARDENA Stream Set is not suitable for industrial use or in combination with chemicals, food, easily combustible and explosive substances. It is not intended for operating watering equipment and systems. GARDENA *lightline* Path Lights are only manufactured for use with 12 V low voltage.

2. For Your Safety

Operating the Pump

The pump should be operated via a residual current device with a residual current rating of ≤ 30 mA (DIN VDE 0100-702 and 0100-738).

→ Please ask your electrician for his advice.

The pump must be placed on solid, even ground.

Mains power cables for the pump

Mains power cables should not have a smaller cross-section than a rubber sheathed cable of the designation H05 RNF. Extension cables must meet the requirements of DIN VDE 0620.

For Austria

In Austria power cables should correspond to ÖVE-EM 42, T2 (2000)/1979 § 22 according to § 2022.1. According to this standard pumps used in swimming pools and ponds should only be operated via an isolating transformer.

→ Please contact your electrician.

For Switzerland

In Switzerland mobile appliances which are used outdoors, must be connected via a residual-current device.

Visual check

Before operating the pump, look to see if there is any damage of the pump (esp. regarding power cable and plug). A damaged pump must not be used. In case of damage, please have the pump checked by our GARDENA Service Centre or by an authorised electrician.

Check line voltage

Data indicated on the type plate must match technical data of the mains supply.

→ Please ask your electrician.

Do not use power cable to carry the pump

Do not use the power cable to carry the pump or to pull the plug out of the socket. Protect the power cable from heat, oil and sharp edges.

Unplug the set

Always unplug the equipment when dismantling the set, when it is not in use and before maintenance.

→ Always disconnect the pump from the mains before undertaking any work on it.

→ Please follow the safety and assembly instructions in these operating instructions.

Temperature of the liquid used

The temperature of the liquid used must not be below 4 °C or above 35 °C.

Wear and reduced output

Sand and other abrasive substances in the liquid cause increased wear and reduce the output of the pump.

Position stream set container

Bury the stream set container in the garden so that the top edge of the stream set container is flush with the turf.

Path Lights

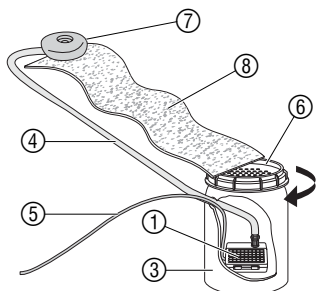
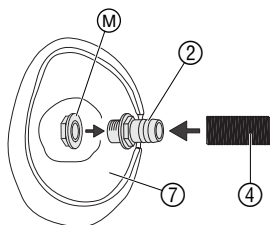
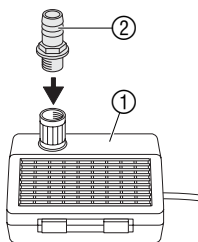
GARDENA *lightline* Path Lights are proof against water jets and frost-resistant. They can be kept installed outside the whole year round.

→ Only use GARDENA *lightline* parts, otherwise we cannot guarantee sound operation.

Use all GARDENA *lightline* products exclusively for 12 volt low voltage. Connection to 230 V would be very dangerous and may cause fatal injuries.

3. Initial Operation

Starting up the stream set:



- Screw the connection piece ② on to the pump ①.
- Bury the stream set container ③ until the cover is just showing ⑥.
The soil removed can be used to produce the slope of the stream.
- Place the pump ① on the base of the stream set container ③ and pass the hose ④ and the connection cable ⑤ for the pump through the side opening of the stream set container ③.
- Screw the cover ⑥ on to the stream set container ③.
- Lay the hose ④ up to the stream source ⑦ which should be in a higher position. *The hose may be laid underground.*
- Screw the connection piece ②, using the nut ① on to the source of the stream ⑦.
- Push the hose ④ on to the source of the stream ⑦ from behind.
- Remove some of the soil to make a stream bed and place the stream liner ⑧ in position.
The stream liner must be upright at the sides to guide the flow of the stream and prevent water being lost.
- Lay the stream liner ⑧ from the source of the stream ⑦ to the container cover ⑥. *To ensure that sufficient water can flow into the stream container, the stream liner should not extend over more than half of the container cover.*
- Place the source of the stream ⑦ in the centre at the upper end of the stream liner ⑧, at a distance of 5 cm from the edge (remember max. conveying height).
- Fill stream set container ③ with water (max. 50 l).
- Plug the mains plug into a 230 V AC power supply.
Warning: The pump will start immediately!
- Check that no water is running over the sides of the stream liner.

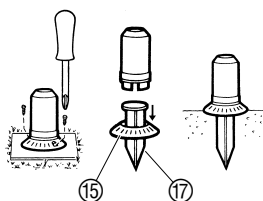
Do not allow the pump to run without water:

Do not allow the pump to run without water because dry-running leads to an undesirable build-up of heat and will destroy the pump. Please note that the water evaporates more quickly in extremely bright sunlight.

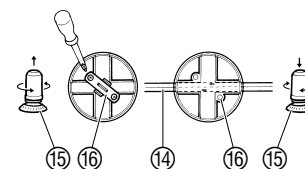
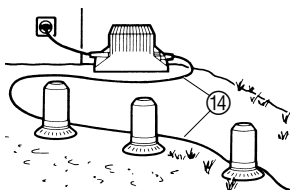
If you wish to extend the stream with a **GARDENA Stream Liner** (0.4 x 2 m²), please contact GARDENA Service.

Path Lights can be screwed on solid ground or fixed with spike into the soil.

- Place the transformer near the mains supply.
- Determine where to locate the lamps and lay the installation cable ⑭ accordingly.
- Release lamp stand ⑮.
- Release cable fixation ⑯ with screwdriver.



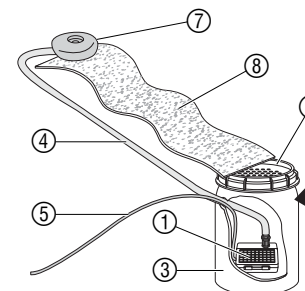
Starting up the Path Lights (only art. 7765):



- Insert cable ⑭ into the small openings of the shade receptacle and press it firmly into the contact pins.
- Then, fasten cable fixation ⑯ with a screwdriver.
- Fasten lamp stand ⑮ (with spike ⑰ included, if necessary).
- Proceed the same way when installing the other lamps.
- For operating your system finally connect the installation cable to the transformer and the power plug to the mains.

4. Maintenance

Cleaning the stream set:

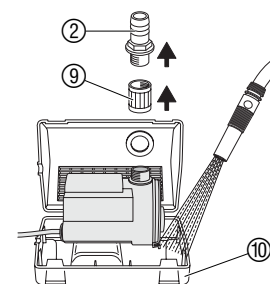


The GARDENA stream set is largely maintenance-free.

The water should be changed if it has become dirty.

- Use a pump to pump out the stream set container ③.
You can use the pump supplied with the set ① for this purpose.
- Unplug the pump from the mains.
- Clean the container ③, cover ⑥ and liner ⑧.
- Start up the stream set again (see 3. Initial operation: "Starting up the stream set").

Cleaning the pump:



Cleaning the pump filter housing:

The water intake slots of the water feature pump must be free from dirt.

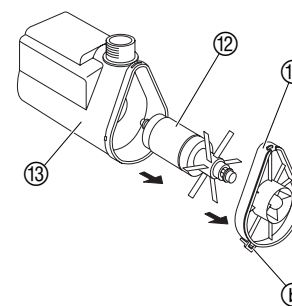
- Unplug the pump from the mains.
- Remove the pump from the stream set container.
- Unscrew the threaded sleeve ⑨ and the connection piece ②.
- Open up the pump filter housing ⑩ and spray clean with a jet of water.
- If necessary, clean the water intake slots of the filter housing ⑩ with a brush.

Note:

Do not use any hard objects or powerful detergents for cleaning the set!

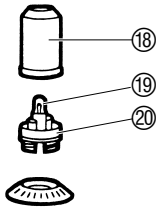
Remove dirt deposits in the pump:

- Unplug the pump from the mains.
- Remove the pump from the stream set container.
- Unscrew threaded sleeve ⑨ and connection piece ②.
- Open the pump filter housing ⑩ and remove the pump.
- Open the snap hooks ⑤ and take the pump cover ⑪ off the motor housing ⑬.
- Draw the feed impeller ⑫ out of the motor housing ⑬.
- Remove any dirt deposits from pump components.
- Replace the feed impeller ⑫ in the motor housing ⑬.
- Press the pump cover ⑪ into the motor housing ⑬ until the connection is heard to snap into place.



5. Trouble-Shooting

Replacing bulbs:



1. Defective bulbs ⑱ are replaced by removing the lampshade ⑱ and pulling the defective bulb ⑱ out of the plug-in base ⑳.
 2. Simply insert new bulb ⑱.
- Make sure that you only use bulbs with max. 12 V / 5 W.

Fault	Possible Cause	Remedy
The water is not clear.	The water is dirty and rich in nutrients.	→ Change the water and clean the liner (see 4. Maintenance).
Pump does not work.	Connections are faulty.	→ Check connections.
	Feed impeller blocked.	→ Remove dirt deposits in the pump (see 4. Maintenance).
Complete lighting system fails, that means that the thermal relay of the transformer has been activated due to overload.	Transformer has been exposed to intense sunlight.	→ Disconnect power plug from the mains and let transformer cool down before new operation. If necessary, locate the transformer in a more shady place.
	Short circuit, caused by defective cable, defective bulb or improperly installed connections.	→ Disconnect power plug from the mains and, starting with the transformer, check all couplings, connections and bulbs to locate the source of the short circuit.
	Too many lamps are connected.	→ Disconnect power plug from the mains and reduce number of lamps. The total Watt value of connected lights must not exceed the total Watt value of the transformer.

If any other faults occur, please contact GARDENA Service.

6. Storage

Over-wintering:



1. Before frosts commence, pump out the stream set container ③ using the pump.
2. Remove the pump ① from the stream set container ③ and store in a frost-free place in a container filled with water. *The mains plug should not be soaked during this process.*
3. Keep the stream set container ③ closed with the cover ⑥ and protect with a plastic sheet to prevent rainwater entering.

Store out of reach of children.

The stream set container may remain buried in the ground during the winter.

7. Accessories

GARDENA lightline Timer electronic	Art. No. 4230	The GARDENA <i>lightline</i> controllers give you the option of controlling your Path Lights installation semi- or fully automatically. Lighting is activated by pressing a button, via time switch or at a pre-set brightness level.
GARDENA lightline Motion Indicator	Art. No. 4235	
GARDENA lightline Installation Cable	15 m Art. No. 4302	
	– or – 25 m Art. No. 4303	
GARDENA Radio Control Set	Art. No. 7874	Start the stream from your patio or lounge.
GARDENA Stream Liner (0,4 m x 2 m)	Please contact your GARDENA Service.	Extend the stream.

8. Technical Data

	Pump Art. No. 7765	Path Lights (3 items)
Rated power	33 W	3 W bulb, 5 W bulb can be used optionally
Flow	2000 l/h	–
Max. delivery head	2.0 m	–
Max. submersion depth	2.0 m	–
Power cable	10 m H05 RNF	5 m
Fitting	pump fitting G 1/2	base: W 2.1 x 9.5 D
Max. media temperature	35 °C	–
Mains voltage / Frequency	230 V / 50 Hz	12 V ~

9. Service

GB

Warranty

GARDENA guarantees this pump and the stream set container for 2 years (from date of purchase). GARDENA grants a 10 years guarantee for the *lightline* path lights. This guarantee covers all serious defects of the unit that can be proved to be material or manufacturing faults. Under warranty we will either replace the unit or repair it free of charge if the following conditions apply:

- The unit must have been handled properly and in keeping with the requirements of the operating instructions.
- Neither the purchaser or a non-authorized third party have attempted to repair the unit.

The feed impeller and illuminants (bulbs) are wearing parts and are not covered by the guarantee. We would like to point out that the GARDENA *lightline* products may fade if exposed to intense sunlight. But this in no way affects the function of the products and is, therefore, not part of the standard warranty.

This manufacturer's guarantee does not affect the user's existing warranty claims against the dealer/seller.

Product Liability

If you have any problems with your pump, please contact our Customer Service or return the defective unit together with a short description of the problem directly to one of the GARDENA Service Centres listed on the back of this leaflet.

We expressly point out that, in accordance with the product liability law, we are not liable for any damage caused by our units if it is due to improper repair or if parts exchanged are not original GARDENA parts or parts approved by us, and, if the repairs were not carried out by a GARDENA Service Centre or an authorised specialist. The same applies to spare parts and accessories.

Deutschland

GARDENA International GmbH
Service Center
Hans-Lorenser-Str. 40
89079 Ulm
Produktfragen: (07 31) 490-123
Reparaturen: (07 31) 490-290

Argentina

Argensem S.A.
Calle Colonia Japonesa s/n
(1625) Loma Verde - Buenos Aires

Australia

NYLEX Consumer Division
76-88 Mills Road
P.O. Box 722
Braeside 3195
Melbourne, Victoria

Austria

GARDENA Österreich Ges. m.b.H.
Stettnerweg 11-15
2100 Korneuburg

Belgium

MARKT (Belgium) NV/SA
Sterrebeekstraat 163
1930 Zaventem

Brazil

RGS Comercial Ltda
Av. Marginal do Rio Pinheiros, 5200
Edifício Montreal - Bloco e - Terreo
05693-000 - Sao Paulo - SP

Bulgaria / България

ДЕНЕКС ООД
Бул. "Г.М.Димитров" 16 ет.4
София 1797

Canada

GARDENA Canada Ltd.
100 Summerlea Road
Brampton, Ontario
Canada L6T 4X3

Chile

Antonio Martinic Y CIA. LTDA.
Gilberto Fuenzalida 185 Loc.
Las Condes - Santiago de Chile

Costa Rica

Compania Exim
Euroiberoamericana S.A.
Av. 12 bis Calle 16 y 18,
Bodegas Keith y Ramirez
San José

Cyprus

FARMOKIPIKI LTD
P.O. Box 7098
74, Digeni Akrita Ave.
1641 Nicosia

Czech Republic

GARDENA spol. s.r.o.
Řípská 20 a, č.p. 1153
62700 Brno

Denmark

GARDENA Danmark A/S
Naverland 8
2600 Glostrup

Finland

Habitec Oy
Martinkyläntie 52
01720 Vantaa

France

GARDENA France
Service Après-Vente
BP 50080
95948 ROISSY CDG Cedex

Great Britain

GARDENA UK Ltd.
27-28 Brenkley Way
Blezard Business Park
Seaton Burn
Newcastle upon Tyne NE13 6DS

Greece

Agrokip G. Psomadopoulos & Co.
33 A, Ifestou str. – 194 00
Industrial Area Koropi
Athens

Hungary

GARDENA Magyarországi Kft.
Késmárk utca 22
1158 Budapest

Iceland

Heimilistaeki hf
Saetun 8
P.O. Box 5340
125 Reykjavik

Republic of Ireland

Michael McLoughlin & Sons
Hardware Limited
Long Mile Road
Dublin 12

Italy

GARDENA Italia S.p.A.
Via Donizetti 22
20020 Lainate (Mi)

Japan

KAKUDAI Mfg. Co. Ltd.
1-4-4, Itachibori Nishi-ku
Osaka 550

Luxembourg

Magasins Jules Neuberg
Grand Rue 30
Case Postale No. 12
Luxembourg 2010

Netherlands

GARDENA Nederland B.V.
Postbus 50176
1305 AD ALMERE
Neth. Antilles
Jonka Enterprises N.V.
Sta. Rosa Weg 196
P.O. Box 8200
Curaçao

New Zealand

NYLEX New Zealand Limited
Private Bag 94001
South Auckland Mail Centre
10 Offenhauser Drive
East Tamaki, Manukau

Norway

GARDENA Norge A/S
Postboks 214
2013 Skjetten

Poland

GARDENA Polska Sp. z o.o.
Szymanów 9 d
05-532 Baniocza

Portugal

GARDENA Portugal, Lda.
Recta da Granja do Marquês
Edif. GARDENA
Algueirão
2725-596 Mem Martins

Russia / Россия

АО АМИДА ТТЦ
ул. Мосфильмовская 66
117330 Москва

Singapore

Hy-Ray Enterprises
Block 1002 Toa Payoh
Industrial Park
#07-1433/1435/1451
Singapore 319074

Slovenia / Croatia

Silk d.o.o. Trgovina
Brodišče 15
1236 Trzin

South Africa

GARDENA South Africa (Pty.) Ltd.
P.O. Box 11534
Vorna Valley 1686

Spain

GARDENA IBÉRICA S.L.U.
C/ Basauri, nº 6
La Florida
28023 Madrid

Sweden

GARDENA Norden AB
Box 9003
20039 Malmö

Switzerland

GARDENA AG
Bitziberg 1
8184 Bachenbülach

Ukraine / Украина

АОЗТ АЛЬЦЕСТ
ул. Гайдара 50
г. Киев 01033

Turkey

GARDENA / Dost Diş Ticaret
Mümesillik A.Ş.
Yeşilbağlar Mah. Başkent
Cad. No. 26
Pendik - İstanbul

USA

GARDENA
3085 Shawnee Drive
Winchester, VA 22604

7765-20.960.02/0031
© GARDENA Manufacturing GmbH
D-89070 Ulm
<http://www.gardena.com>