



## Set-Up Instructions for Models:

968999310/LZ25C

### Equipped With One of the Following Decks:

968999343 TRD52 Tunnel Ram Deck,  
968999344 TRD61 Tunnel Ram Deck,  
968999348 CD52 Combi Deck,  
968999349 CD61 Combi Deck

## Setup

Uncrate machine.

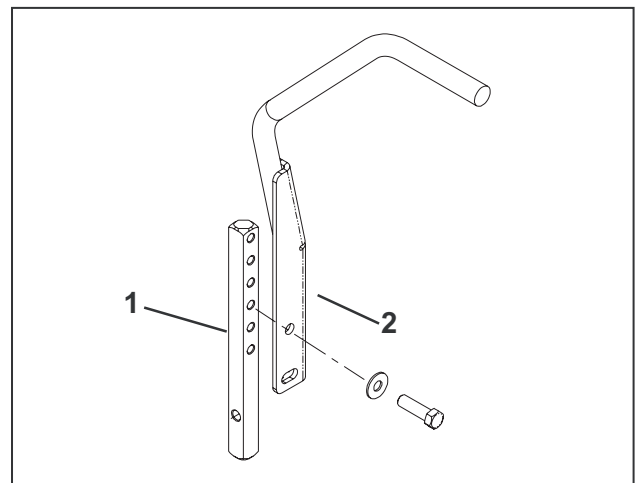
### Tires

Mount rear drive wheels using the lug nuts installed on the hubs.

Check the tire pressure in all four tires. All tires should be 103 kPa (15 psi.)

### Control Arms

Remove top bolt in control arm and loosen bottom bolt, rotate the control levers to the upright position. Align the levers so they are even in the neutral position. Reinstall hardware and tighten.



#### **Install Control Arm Hardware**

1. Control Arm
2. Motion Control Lever

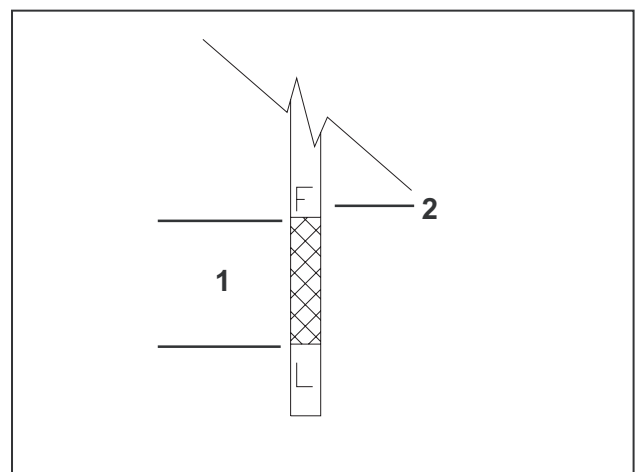
### Wire Harness

1. Connect the wire harness from the seat to the frame harness.

### Engine Oil

Check engine oil with dip stick. Add if needed per the engine manufactures specifications. See engine manual for oil type and filling specifications.

Loosen the discharge chute slightly and lower into position. Chute should be snug but still pivot freely.



#### **Check Engine Oil Level**

1. Operating Range
2. "F" Full Mark

## Adjustments

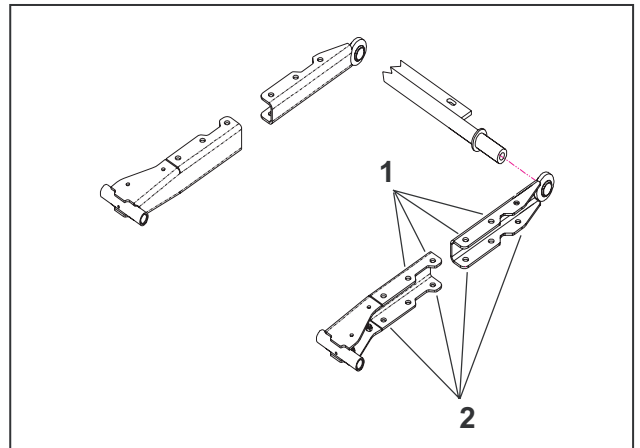
### Deck Installation Combi Deck

Remove the four (4) bolts that pass through the struts that are connected to the unit.

Attach the deck struts to the rear of the deck and secure with strut pins.

Place the deck under the mower in the approximate position for installation. Assemble the deck strut channels to the outside of the frame strut channels.

Note the position of the bolt locations on the illustration. The deck size will determine the assembled length of the strut arms.

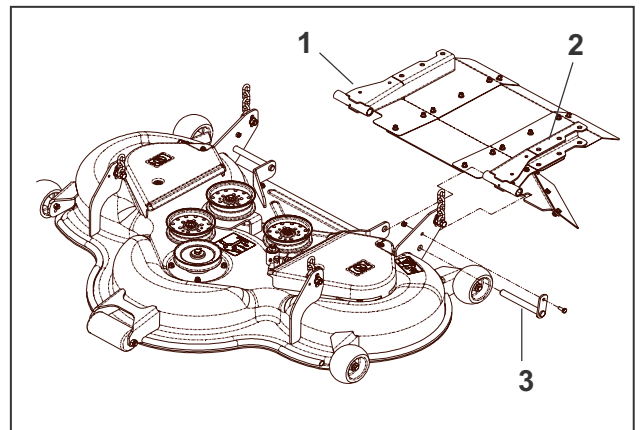


### **Deck Strut Arm Configuration**

1. Bolt Locations for 132 mm/52, Combi Deck
2. Bolt Locations for 155 mm/61, Combi Deck

Install the deck belt around the clutch and route to correctly to the deck. Look at deck belt routing decal for instruction if necessary.

Install the debris guard to the struts using the four (4) bolts previously removed.

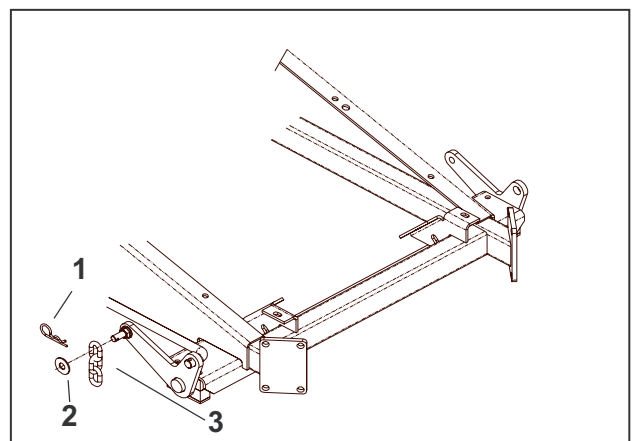


### **Combi Deck Installation**

1. Debris Guard
2. Deck Strut
3. Strut Pin

Remove the hairpin and washer from the (4) lift pins on the deck lift arm at the unit.

Place the four (4) chains on the lift pin and secure with the washer and hairpin previously removed. Deck installation is now complete.

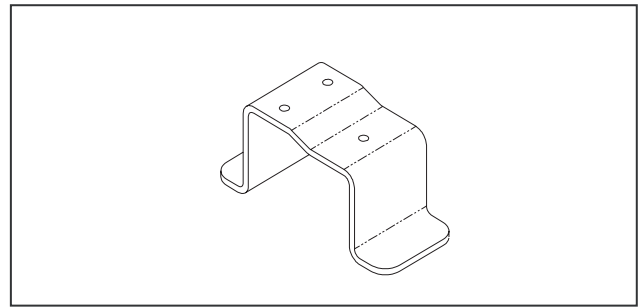


### **Deck Lift Arm**

1. Hair Pin
2. Washer
3. Chain

## **Deck Leveling Combi Deck**

Locate the three deck leveling blocks from the loose parts.



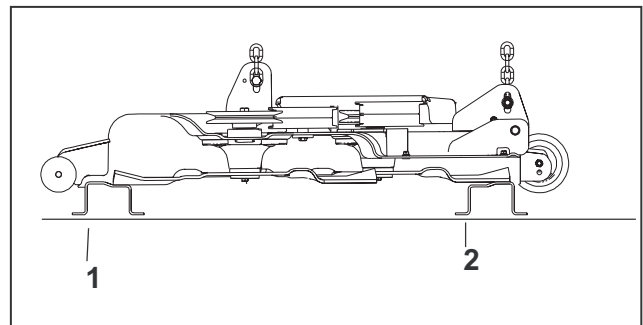
**Deck Leveling Block**

Raise the front of the deck and position the blades so they are parallel with the sides of the unit.

Place one (1) height block under the front of the center blade on the mower deck. The blade tip should rest on the lower level of the spacer block (single hole level).

Raise the rear of the deck and place one spacer block under the rear of each outer blade set at the higher level of the spacer block (dual hole level). This will put the deck at a slight angle tilting slightly lower toward the front.

The deck will be set at 6.35 cm (2.5") with the correct pitch.



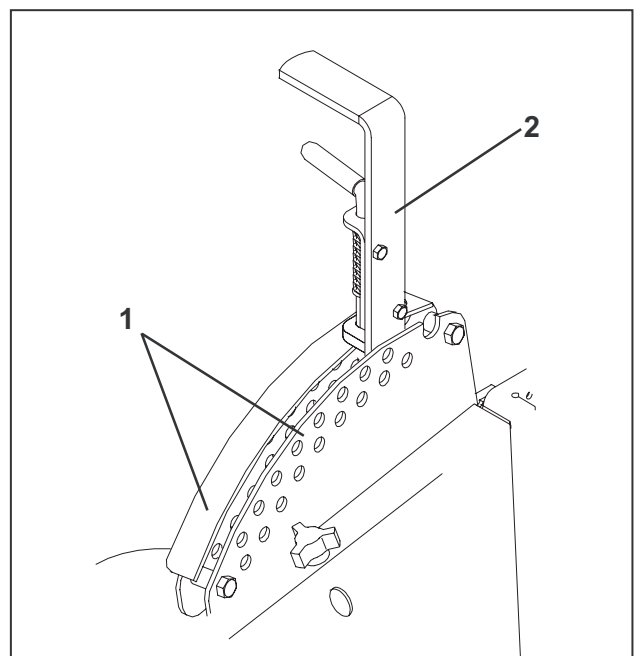
**Adjust Deck Using Deck Leveling Blocks**

1. Front Block
2. Rear Block

Lower the deck lift lever to 6.35 cm (2.5"). The lift lever may have to be held down to prevent spring back.

Connect the chains to the deck. Make sure to remove all slack from the chains by holding the mounting hardware toward the bottom of the slot while tightening the bolts on the deck.

Remove the deck leveling blocks and verify the height is correct and all four (4) chains are tight.



**Deck Lift Lever**

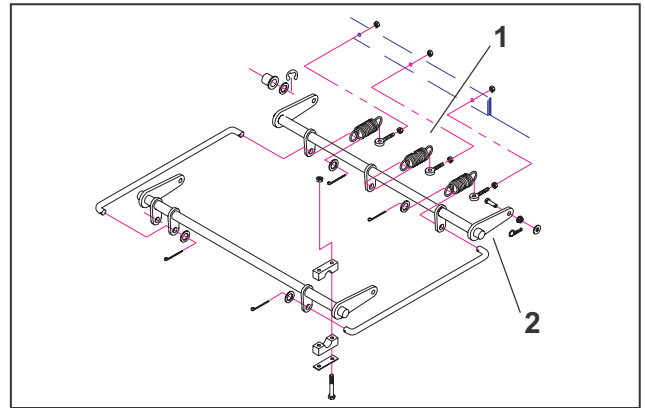
1. Deck Height Adjustment Plates
2. Lift Lever

# Adjustments

## Deck Installation Tunnel Ram Deck

Locate lift spring and hardware. The tunnel ram deck requires an additional lift spring on the center tab of the rear lift shaft.

Install center deck lift assist spring.



### **Install Additional Deck Lift Spring**

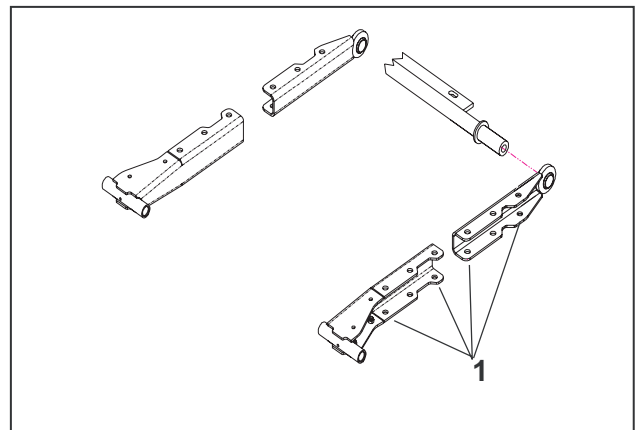
- 1. Deck Lift Spring
- 2. Rear Lift Shaft

Remove the four (4) bolts that pass through the struts connected to the unit.

Attach the deck struts to the rear of the deck and secure with the strut pins.

Note the location for the Deck Strut Hardware on the illustration.

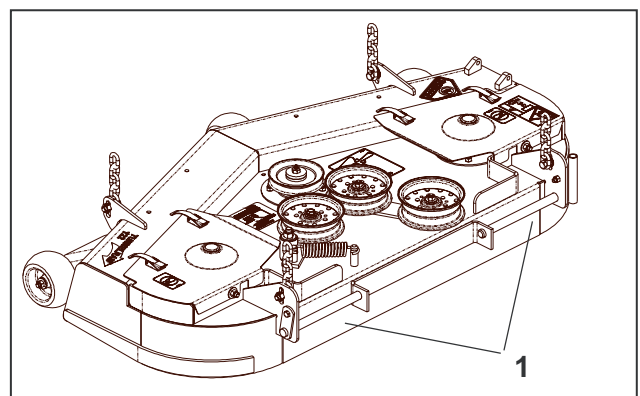
Install the deck belt around the clutch and route correctly to the deck. Look at the deck belt routing decal for instruction if necessary. Secure the deck struts to the struts on the unit with hardware previously removed.



### **Deck Strut Configuration**

- 1. Bolt Locations for 132 mm/52" Tunnel Ram Deck and 155 mm/61" Tunnel Ram Deck

Secure the deck struts to the struts on the unit with hardware previously removed.

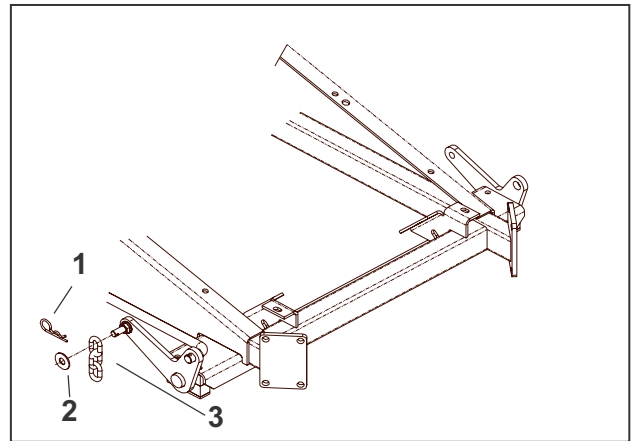


### **Tunnel Ram Deck Installation**

- 1. Strut Pins

Remove the hairpin and washer from the four (4) lift pins on the deck lift arm at the unit.

Place the four (4) deck chains on the lift pins and secure with the washer and hairpin previously removed.

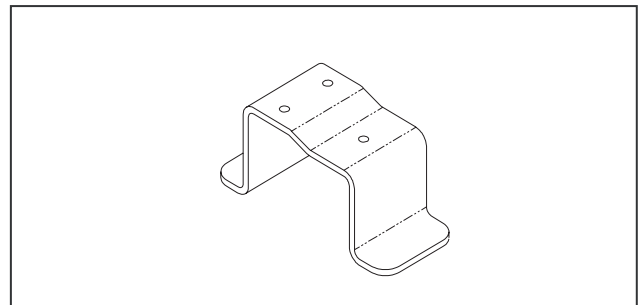


**Deck Lift Arm**

- 1. Hair Pin
- 2. Washer
- 3. Chain

**Deck Leveling Tunnel Ram Deck**

Locate the three deck leveling blocks from the loose parts.



**Deck Leveling Block**

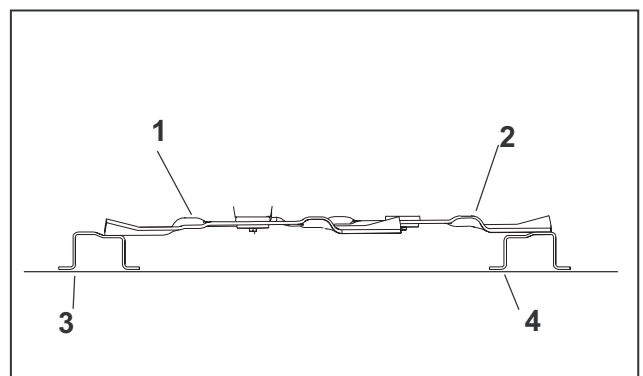
Raise the front of the deck and position the blades so they are parallel with the sides of the unit.

Place one (1) height block under the front of the center blade on the mower deck. The blade tip should rest on the lower level of the spacer block (single hole level).

Raise the rear of the deck and place one spacer block under the rear of each outer blade set at the higher level of the spacer block (dual hole level).

This will put the deck at a slight angle tilting slightly lower toward the front.

The deck will be set at 6.35 cm (2.5") with the correct pitch.



**Adjust Pitch With Deck Leveling Blocks**

- 1. Front Blade
- 2. Rear Blade (2)
- 3. Front Block
- 4. Rear Block

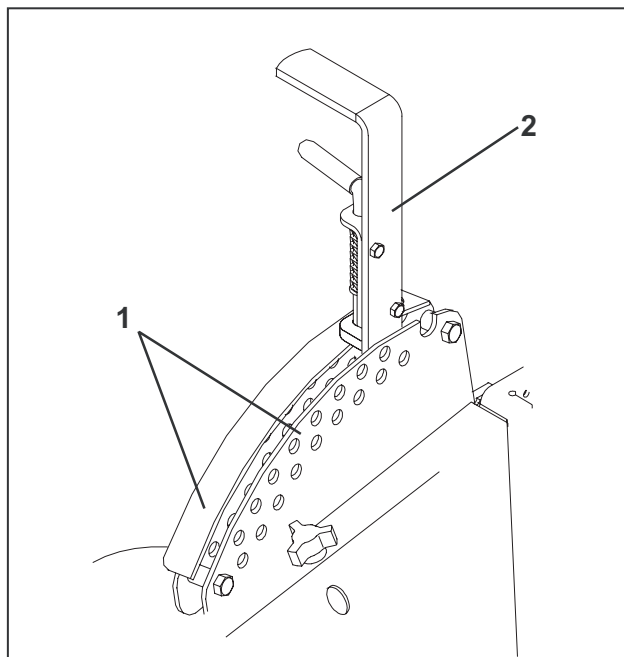
Lower the deck lift lever to 6.35 cm (2.5"). The lift lever may have to be held down to prevent spring back.

Connect the chains to the deck. Make sure to remove all slack from the chains by holding the mounting hardware toward the bottom of the slot while tightening the hardware.

Remove the deck leveling blocks and verify the height is correct and all four (4) chains are tight.

Attach the discharge chute to the deck with the hardware provided.

Deck installation and adjustment is now complete.



#### **Deck Lift Lever**

1. Deck Height Adjustment Plates
2. Lift Lever

#### **Motion Control Linkage Adjustment**

This adjustment must be made with the rear wheels rotating. Raise the rear of the machine and block it up so the wheels are free to rotate. **CAUTION: Keep hands, feet and clothing away from rotating tires.**

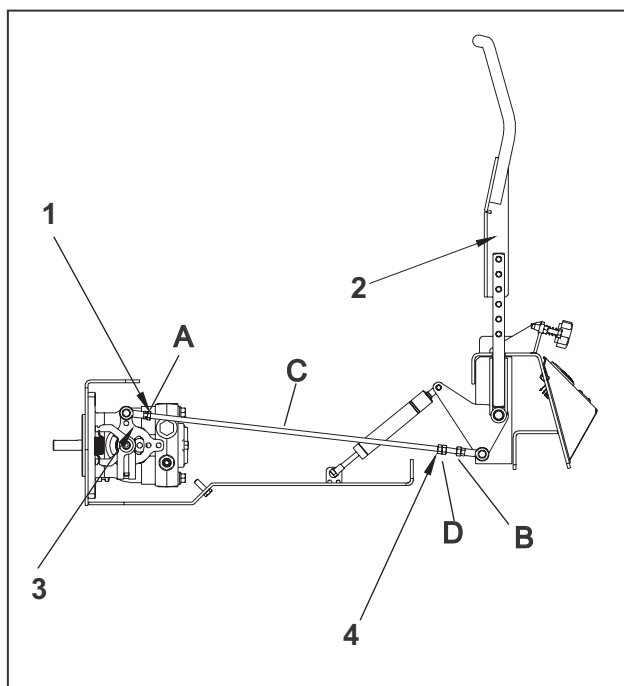
Place a 2x4 board between the foot plate and the center of the seat to engage the seat safety switch.

Loosen the nuts (A & B) directly behind each ball joint on both rods (C) that connect the pump arm to the motion control assemblies.

Start the engine. The park brake must be engaged and the motion control levers in the neutral slots to start the engine. Run the engine approximately half throttle

Release park brake to allow the wheels to rotate.

Begin with either side and put the motion control lever into the neutral position. Adjust the motion control linkage by rotating the double nuts(D) in the proper direction until the wheel stops rotating. Move the motion control lever forward then into the neutral position and place it into the neutral slot. The wheel must be stopped completely at this point. Now do the same in reverse and release the lever. The lever should return to neutral on its own.



#### **Control Linkage Adjustment**

1. Left Hand Threads
2. Motion Control Lever
3. Pump Arm
4. Turn Here to Adjust