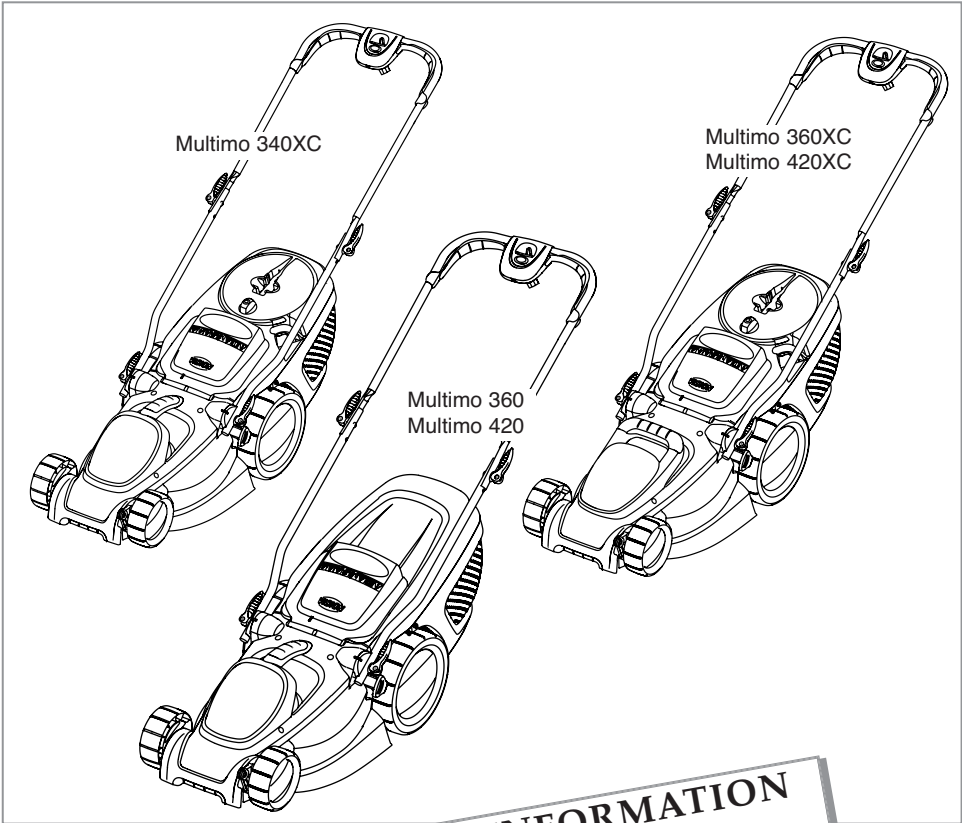





**Multimo 340XC**  
**Multimo 360**  
**Multimo 360XC**  
**Multimo 420**  
**Multimo 420XC**



Original Instructions



 **WARNING**  
**IMPORTANT INFORMATION**  
Read before use  
& retain for future reference

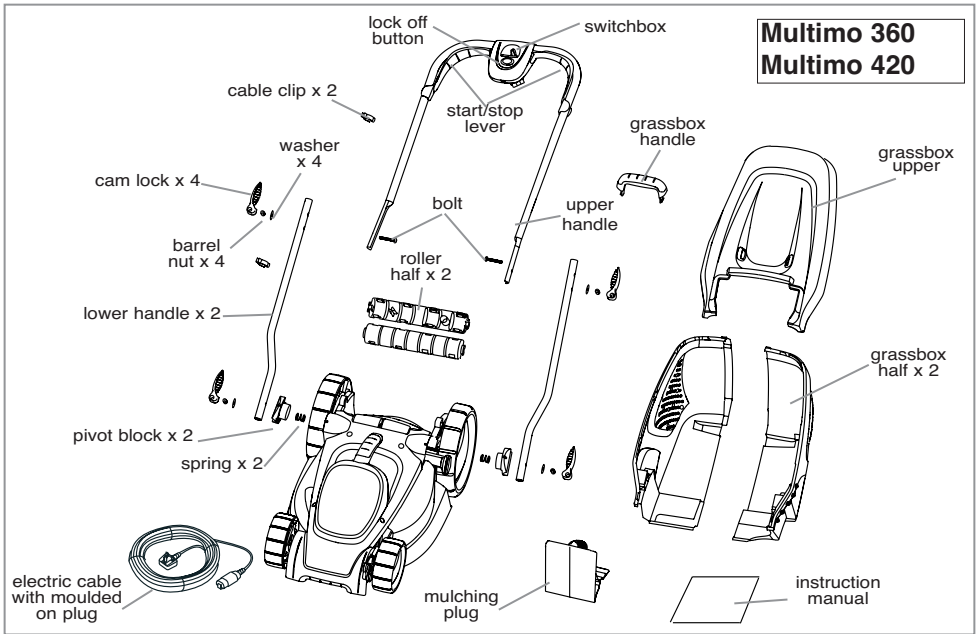
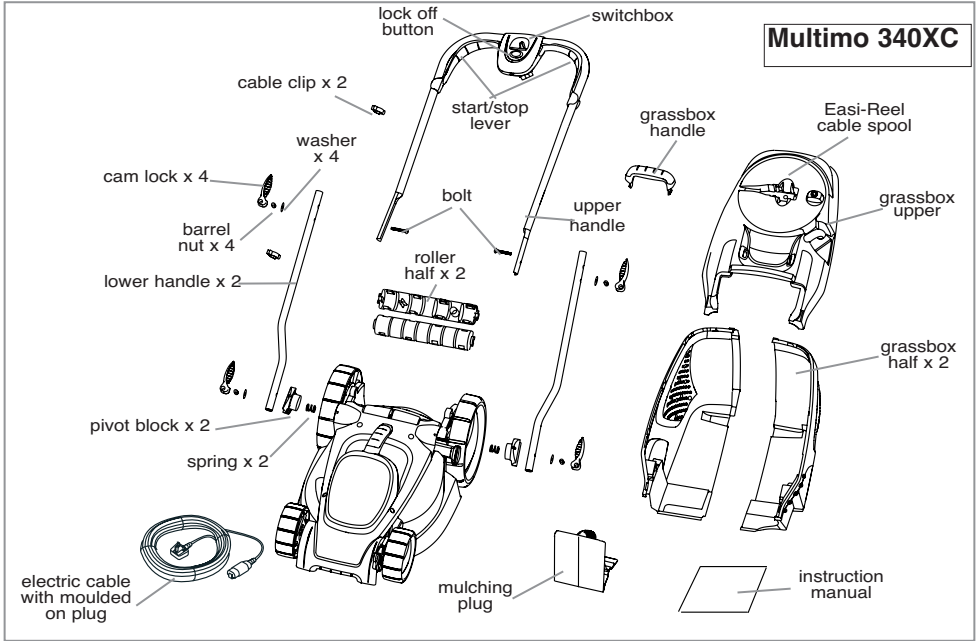
For all customer enquiries or for replacement parts, contact:-

☎ 01325 300303

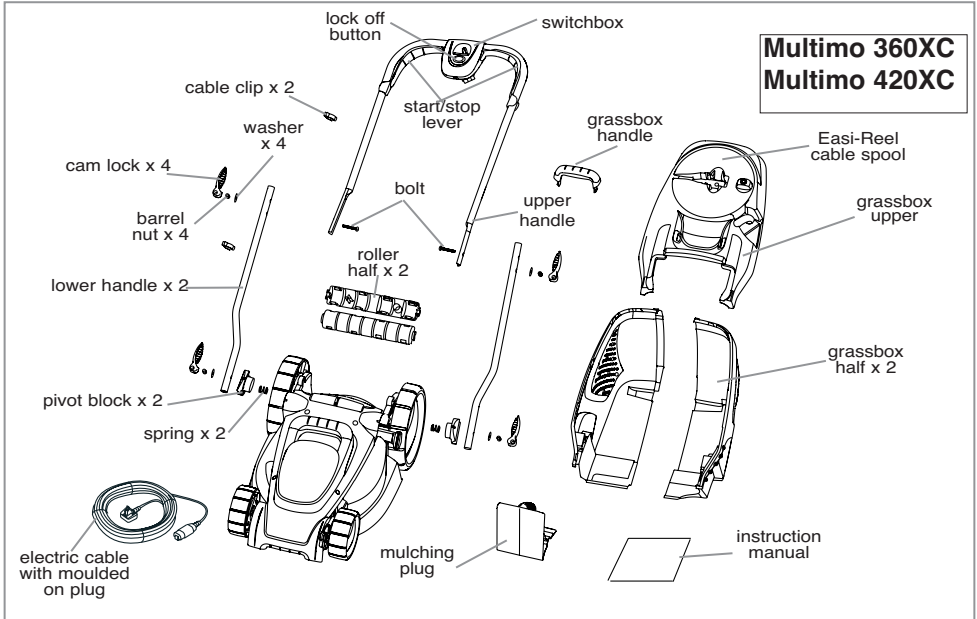
🖱 [www.flymo.com](http://www.flymo.com)

✉ [customer.services@husqvarna.co.uk](mailto:customer.services@husqvarna.co.uk)

# Carton Contents



## Carton Contents



### **IMPORTANT !**

Please check the contents of the carton are correct **BEFORE** assembling your new Flymo product. The Loose Parts Pack is packaged underneath the deck of the product.

### **IF ANY PARTS ARE MISSING CONTACT:-**

Husqvarna UK Ltd. Customer Service Department direct  
Telephone : 0870 609 1901 Fax : 0870 609 1902

## Safety



If not used properly this product can be dangerous! This product can cause serious injury to the operator and others, the warnings and safety instructions must be followed to ensure reasonable safety and efficiency in using this product. The operator is responsible for following the warning and safety instructions in this manual and on the product. Never use the product unless the grassbox or guards provided by the manufacturer are in the correct position.

### Explanation of Symbols on your product



Warning



Read the user instructions carefully to make sure you understand all the controls and what they do.



Always keep the product on the ground when operating. Tilting or lifting the product may cause stones to be thrown out.



Keep bystanders away. Do not mow whilst people especially children or pets are in the area.



Beware of sharp blades - remove plug from mains before maintenance or if cable is damaged. Blades continue to rotate after the machine is switched off.



Keep the cable supply away from the cutting means

# Safety

## General

1. This product is not intended for use by persons (including children) with reduced physical, sensory or mental capabilities, or lack of experience and knowledge, unless they have been given supervision or instruction concerning the use of the product by a person responsible for their safety. Children should be supervised to ensure that they do not play with the product. Local regulations may restrict the age of the operator.
2. Only use the product in the manner and for the functions described in these instructions.
3. Never operate the product when you are tired, ill or under the influence of alcohol, drugs or medicine.
4. The operator or user is responsible for accidents or hazards occurring to other people or their property.

## Electrical

1. The British Standards Institute recommend the use of a Residual Current Circuit Device (R.C.D.) with a tripping current of not more than 30mA. Even with a R.C.D. installed 100% safety cannot be guaranteed and safe working practice must be followed at all times. Check your R.C.D. every time you use it.
2. Before use, examine cable for damage, replace it if there are signs of damage or ageing.
3. Do not use the product if the electric cables are damaged or worn
4. Immediately disconnect from the mains electricity supply if the cable is cut, or the insulation is damaged. Do not touch the electric cable until the electrical supply has been disconnected. Do not repair a cut or damaged cable. Replace it with a new one.
5. Your extension cable must be uncoiled, coiled cables can overheat and reduce the efficiency of your product.
6. Keep cable away from product, always work away from the power point mowing up and down, never in circles.
7. Do not pull cable around sharp objects.
8. Always switch off at the mains before disconnecting any plug, cable connector or extension cable.
9. Switch off, remove plug from mains and examine electric supply cable for damage or ageing **before** winding cable for storage. Do not repair a damaged cable, replace it with a new one. Use only Flymo replacement cable.
10. Always wind cable carefully, avoiding kinking.
11. Never carry the product by the cable.
12. Never pull on the cable to disconnect any of the plugs.
13. Use only on AC mains supply voltage shown on the product rating label.
14. Flymo Products are double insulated to EN60335. Under no circumstance should an earth be connected to any part of the product.

## Preparation

1. While using your product always wear substantial footwear and long trousers.
2. Make sure the lawn is clear of sticks, stones, bones, wire and debris; they could be thrown by the blade.
3. Before using the product and after any impact, check for signs of wear or damage and repair

as necessary.

4. Replace worn or damaged blades together with their fixings in sets to preserve balance.

## Use

1. Use the product only in daylight or good artificial light.
2. Avoid operating your product in wet grass, where feasible.
3. Take care in wet grass, you may lose your footing.
4. On slopes, be extra careful of your footing and wear non-slip footwear.
5. Use across the face of slopes, never up and down.
6. Exercise extreme caution when changing direction on slopes. Walk never run.
7. Using on banks and slopes can be dangerous. Do not use on **banks** or **steep** slopes.
8. Do not walk backwards when operating, you could trip.
9. Never cut grass by pulling the product towards you.
10. Switch off before pushing the mower over surfaces other than grass.
11. Never operate the product with damaged guards or without guards in place.
12. Keep hands and feet away from the cutting means at all times and especially when switching on the motor.
13. Do not tilt product when the motor is running, except when starting and stopping. In this case, do not tilt more than absolutely necessary and lift only the part which is away from the operator. Always ensure that both hands are in the operating position before returning the product to the ground.
14. Do not put hands near the grass discharge chute.
15. Never pick up or carry a product when it is operating or still connected to the mains supply.
16. Remove the plug from the mains :
  - before leaving the product unattended for any period;
  - before clearing a blockage;
  - before checking, cleaning or working on the appliance;
  - if you hit an object. Do not use your product until you are sure that the entire product is in a safe operating condition.;
  - if the product starts to vibrate abnormally. Check immediately. Excessive vibration can cause injury.

## Maintenance and storage

1. Caution: Do not touch rotating blade(s)
2. Keep all nuts, bolts and screws tight to be sure the lawnmower is in safe working condition.
3. Check the grassbox frequently for wear or deterioration.
4. Replace worn or damaged parts for safety.
5. Only use the replacement blade, and blade bolt specified for this product.
6. Be careful during adjustment of the product to prevent entrapment of the fingers between moving blades and fixed parts of the machine.
7. Store in a cool dry place and out of reach of children. Do not store outdoors.

## Cables

### CABLES - IMPORTANT

- Use only 1.00mm<sup>2</sup> size cable up to 40 metres length maximum.

#### Maximum rating :

1.00mm<sup>2</sup> size cable, 10 amps 250 volts AC.

### • YOUR PRODUCT IS SUPPLIED WITH AN ELECTRIC MAINS CABLE FITTED WITH A FEMALE CONNECTOR.

1. Flymo Mains Cables and Extension Cables are available from your local Approved Service Centre.
2. Do not wire an extension cable directly to your product yourself. Please contact your local Approved Service Centre for further information on the connectors and kits available.
3. Only use extension cables specifically designed for outdoor use.

### CONNECTORS - IMPORTANT

- Flymo connectors are suitable for use with 2 core cable only. Under no circumstances should these connectors be used for earthed products.
- All Flymo connectors and cables are of splashproof construction. They are not waterproof and must not be left outside permanently nor should they be submerged or immersed in water. Do not let cable lay or trail through pools of water or splashed with water from hose pipes.

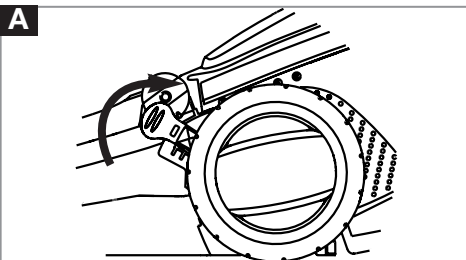
### MAINS PLUG REPLACEMENT - IMPORTANT

- If the plug supplied is cut off it should be destroyed. There is an electric shock hazard if

a cut off plug is inserted into a 13 amp socket.

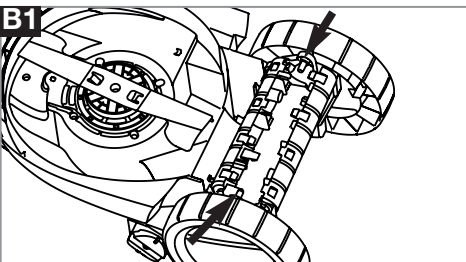
1. **No earth required.** Flymo products are double insulated to EN60335 and under no circumstances should an earth be connected to any part of the product.
2. **Ensure the mains voltage suits your product**
3. **IMPORTANT!**  
The wires in the mains lead are coloured in accordance with the following code:  
BLUE - NEUTRAL  
BROWN - LIVE  
The wire which is coloured BLUE must be connected to the Terminal which is marked with the letter 'N' or coloured BLACK.  
The wire which is coloured BROWN must be connected to the Terminal which is marked with the letter 'L' or coloured RED.
4. It is important that the outer sheath is clamped correctly into the 3-pin plug.
5. If in doubt consult your local Service Repairer or qualified electrician before the machine is used.
6. **A 13 Amp fuse must be fitted to the Mains Plug.**
7. The normal plug fuse and household fuse only protect the electrical equipment and are not a safeguard against electrocution.

## IMPORTANT INFORMATION

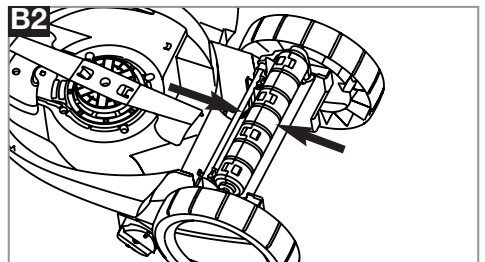


When received from the Manufacturer, the wheels are in a raised position.  
**Do not switch on the product before removing from the raised position into position 5.**

## Roller Assembly

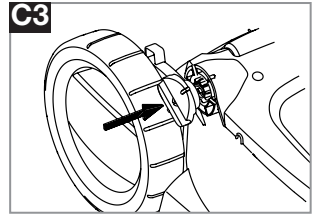
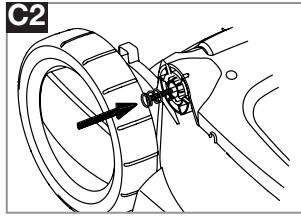
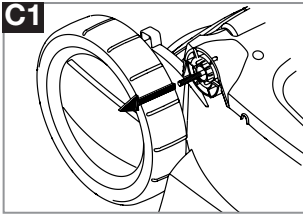


1. Turn product over.
2. Place both halves of the roller over the location pegs as illustrated in fig.B1



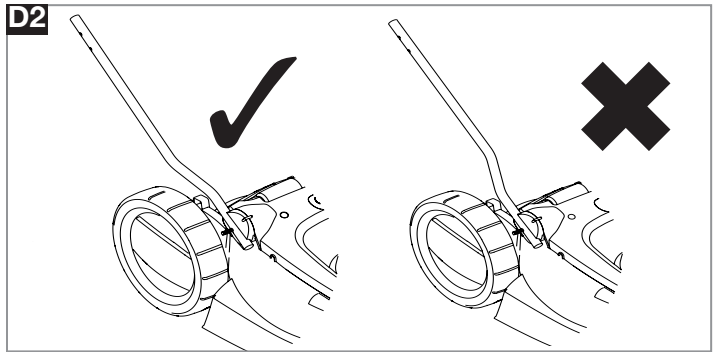
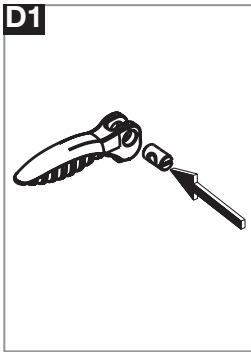
3. Clip the roller together to secure it into position.(B2)
  - Do not clip the roller together before placing over the location pegs

## Assembly of Lower Handles to Lawnmower



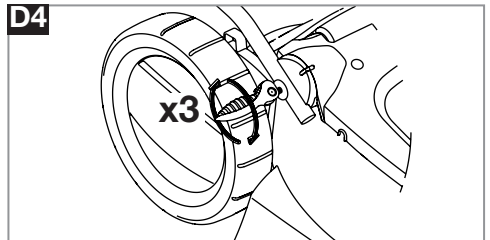
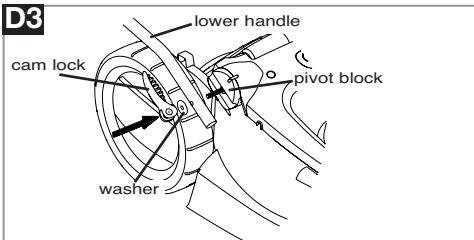
1. Pull the lower handle bolt until it locks into position as illustrated in fig C1.
2. Place the Spring over the Bolt (C2)

3. Insert the Pivot Block on to the Bolt (C3)  
**Repeat for the other side.**



4. Insert the Barrel Nut into the Cam Lock as illustrated in fig D1.
5. Ensuring the lower handle is in the correct position (D2)

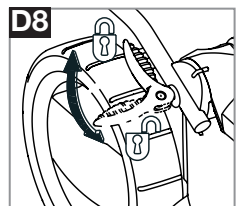
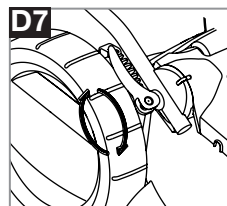
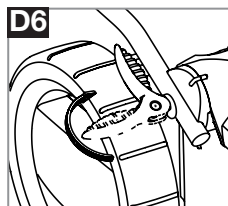
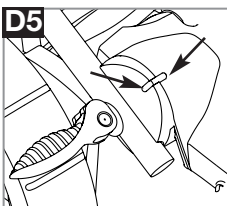
- Insert the Lower Handle, Washer and Cam Lock on to the Bolt (D3) and turn the Cam Lock 3 times clockwise, as illustrated in fig D4.



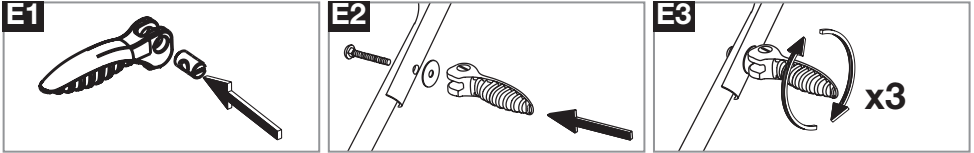
7. Ensuring the raised markings on the Pivot Block and the deck are aligned (D5), fold down the Cam Lock towards the Handle as illustrated in fig D6, and continue to turn clockwise (D7) until tightened.

**Repeat for the other side.**

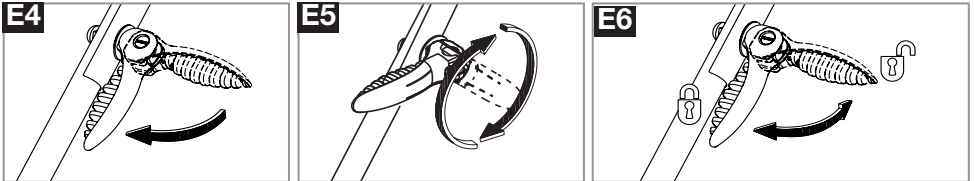
8. The Cam Lock can be unlocked and locked as illustrated in fig D8.



## Assembly of Upper Handles to Lower Handles

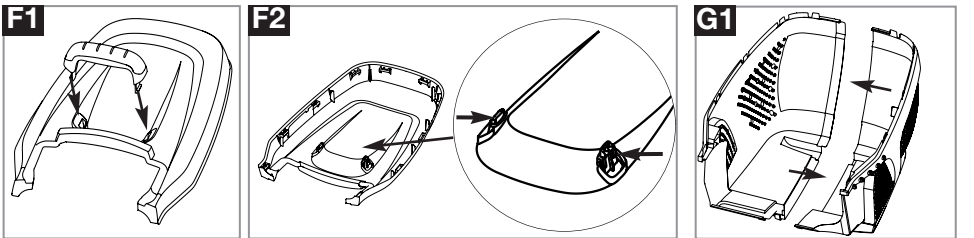


1. Insert the Barrel Nut into the Cam Lock as illustrated in **fig E1**.
2. Attach the Upper Handle to the Lower Handle with the Round Headed Bolt, Washer and Cam Lock as illustrated in **fig E2**.
3. Turn the Cam Lock 3 times clockwise, as illustrated in **fig E3**.



4. Fold down the Cam Lock towards the Handle as illustrated in **fig E4**, and continue to turn clockwise (**E5**) until tightened.
5. The Cam Lock can be unlocked and locked as illustrated in **fig E6**. Repeat for the other side.

## Grassbox Assembly

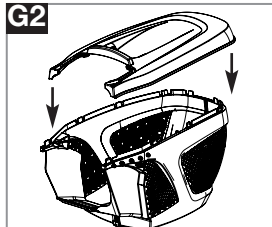


### Grassbox Handle Assembly

1. Locate the grassbox handle into the slots in the grassbox upper and push until it clicks into position. (**F1**)
2. Looking at the underside of the lid (**F2**), ensure the clips of the grassbox handle are securely located.

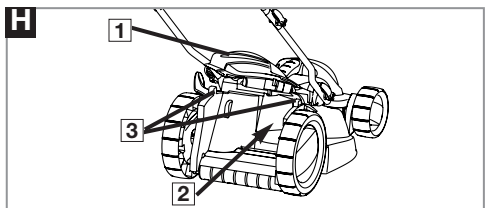
### Grassbox Assembly

1. Locate the the grassbox halves together by aligning the clips. Ensure all clips are correctly located before clicking into position. (**G1**)
2. Locate the grassbox lid onto the assemble grassbox by aligning the clips. Ensure all clips are correctly located before clicking into position (**G2**)

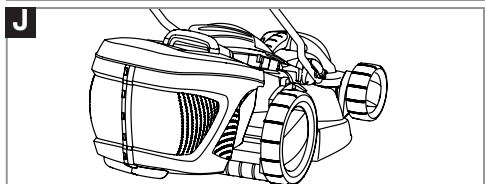


### Fitting Fully Assembled Grassbox to Lawnmower.

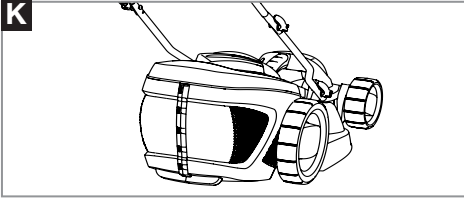
1. Lift safety flap (**H1**)
  2. Make sure the discharge chute is clean and free from debris (**H2**)
  3. Locate fully assembled grassbox onto 2 location points (**H3**) at the rear of the deck as illustrated in **pic. J**
  4. Locate safety flap onto the top of the grassbox. Ensure the grassbox is securely located.
- **IMPORTANT ! AFTER FITTING ENSURE NO GAP REMAINS BETWEEN THE SAFETY FLAP AND THE GRASSBOX.**



- Removal is the reverse procedure.
- For larger areas of grass where grass collection is not required you can use your lawnmower without the grassbox. The design of the safety flap permits the cut grass to be discharged downward behind the machine.

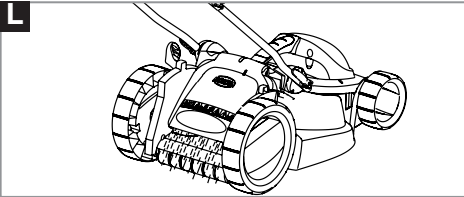


## How to Mow



Your product can be used to cut grass using the following methods:-

1. **Grassbox Fitted:-** grass is collected effectively and compacted into the grassbox. **(K)**
2. **Rear Discharge:-** Effectively cuts long grass with no need to empty the grassbox **(L)**
3. **Mulch Plug Fitted:-** grass cuttings are finely chopped to return nutrients to your lawn **(M)**. See 'Mulching Plug' on page 7.

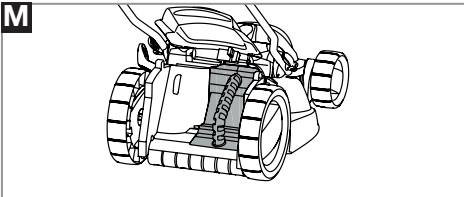


### How to Mow

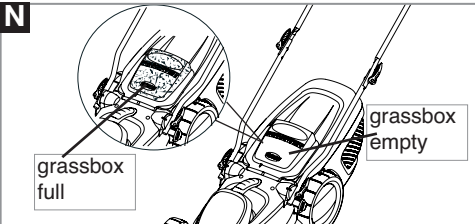
1. Start mowing the edge of the lawn nearest to the power point so the cable is laid out on the lawn you have already cut.
2. Mow twice a week during the growing season, your lawn will suffer if more than a third of its length is cut at one time and this may also result in poor collection.

### Do Not Overload Your Mower

Mowing long thick grass may cause the motor speed to drop, you will hear a change in the motor sound. If the motor speed drops you may overload your lawnmower which may cause damage. When mowing in long thick grass a first cut with the cutting height set higher will help reduce the load. See Cutting Height Adjustment.

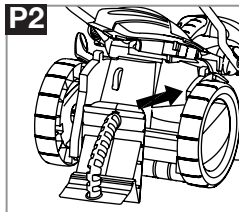
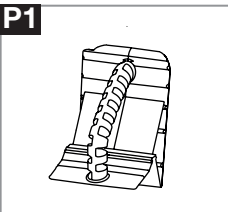


## Grassbox Full Window

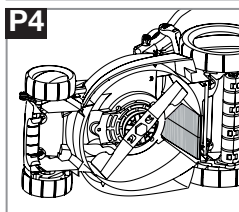
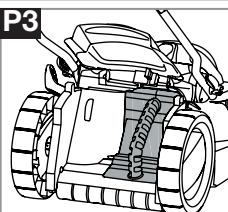


- As the grassbox fills up, grass will be visible through the window **(N)**.
- When the window/grassbox is full it is time to empty the grassbox.

## Mulching Plug



### Using as a mulcher



1. Your lawnmower is supplied with a mulching plug. **(P1)**
2. Stop your lawnmower as described in **Starting and Stopping**.
3. Lift safety flap and insert the mulching plug into rear discharge chute. **(P2)** ensuring it is securely fitted. **(P3)**
4. The mulching plug prevents grass from being collected by blocking the collection chute on the underside of the deck. **(P4)**



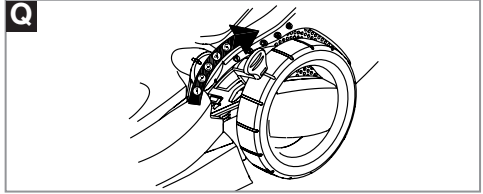
## Cutting Height Adjustment

### Cutting Height Adjustment

- Height of cut is adjusted by raising or lowering the wheels using the height adjustment lever (Q)
- There are five heights of cut on this product.
- **NOTE**

A medium height of cut is recommended for most lawns.

The quality of your lawn will suffer and collection will be poor if you cut too low.



## Starting and Stopping

### To Start your Lawnmower

1. Connect female extension cable connector to the back of the switchbox. (R)
2. Form loop in mains cable and push the loop through the slot. (S)
3. To secure, position loop over the hook and pull the cable back through the slot. (T)
4. Connect plug to mains and switch on.
5. Tilt the handle downwards to slightly raise the front of the lawnmower and to reduce the risk of lawn damage whilst starting.

**The switchbox is provided with a lock-off button (U) to prevent accidental starting.**

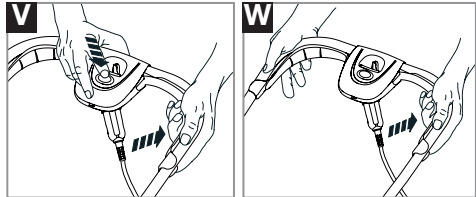
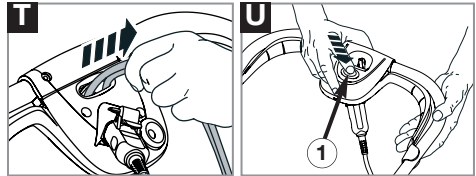
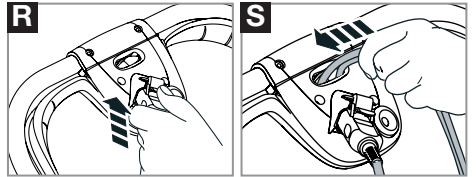
6. Press and hold the lock-off button (U) on the switchbox, then squeeze one of the Start/Stop levers towards the upper handle (V).
6. Continue to squeeze the start/stop lever towards the upper handle and release the lock-off button (W).
7. Lower the lawnmower to its proper operating position and commence mowing.

• **NOTE** - There are two start/stop levers fitted. Either one can be used for starting the lawnmower.

• **IMPORTANT** - Do not use the start/stop levers intermittently

### To Stop your Lawnmower

1. Release the pressure on the Start/Stop lever.



## Removing and Fitting the Blade

Switch off, wait until the blade has stopped rotating and disconnect from the mains electricity supply **BEFORE** attempting to remove or refit the blade. Always handle the blade with care - sharp edges could cause injury. **USE GLOVES.**

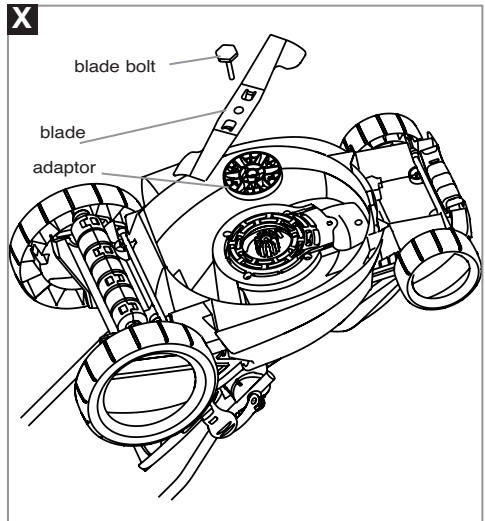
### Removing the Blade

1. To remove the blade bolt, hold the blade firmly with a gloved hand and with a spanner, loosen the blade bolt by turning it anti-clockwise (X).
2. Remove the blade bolt, blade and adaptor. (X)
3. Inspect for damage and clean as necessary.

**Renew your metal blade after 50 hours mowing or 2 years whichever is the sooner - regardless of condition. If the blade is cracked or damaged replace it with a new one.**

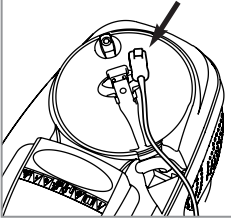
### Fitting the Blade

1. Attach the adaptor to the shaft.
2. Fit the blade to the adaptor ensuring that once it is fitted you are able to read the text on the blade 'This side to grass'
3. Re-assemble blade bolt through the blade and the adaptor.
4. Hold the blade firmly with a gloved hand and tighten the blade bolt firmly with a spanner. Do not over tighten.

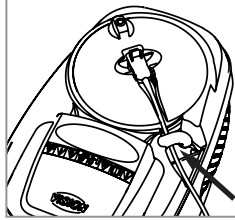


## Easi-Reel Cable Winder (XC models only)

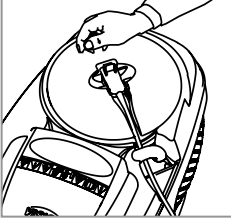
**Y1**



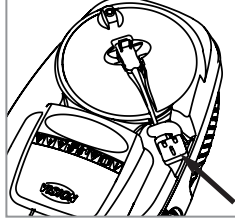
**Y2**



**Y3**



**Y4**



### Storing your cable in the Easi-Reel cable winder

1. Insert the female connector into the centre of the cable winder (**Y1**)
2. Place the cable under the cable guide (**Y2**)
3. Turn the cable winder (**Y3**) until all of the cable is wound in. (**Y4**)

### Unwinding the cable before re-use

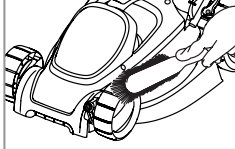
1. Pull the cable by the plug and unwind the cable fully.
  - Ensure that the cable is released from the cable guide (**Y2**) before using your machine.
  - Ensure cable is not entangled with any other cables and that it is not trapped in any parts of the product.

## Caring for your Lawnmower

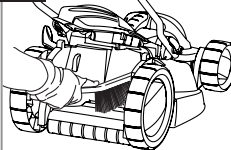
**Z1**



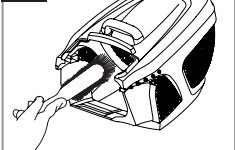
**Z2**



**Z3**



**Z4**



**Z5**



**Z6**



### Cleaning

- **USE GLOVES**

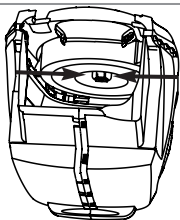
- **IMPORTANT:-** It is very important that you keep your lawnmower clean. Grass clippings left in any of the air intakes or under the deck could become a potential fire hazard.

1. Remove grass from under the deck with brush. (**Z1**)
2. Using a soft brush - remove grass clippings from all air intakes (**Z2**), the discharge chute (**Z3**) and the grass box (**Z4**).
3. Using a soft brush, remove grass clippings from the vision window (**Z5**).
4. Wipe over the surface of your lawnmower with a dry cloth (**Z6**).

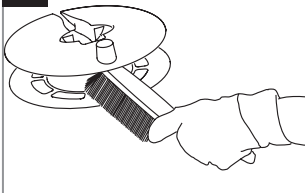
- **IMPORTANT:-** Never use water for cleaning your lawnmower. Do not clean with chemicals, including petrol, or solvents - some can destroy critical plastic parts.

## Caring for your Lawnmower cont'

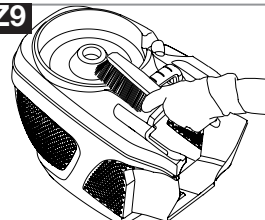
Z7



Z8



Z9



### Cleaning Easi-Reel cable winder (XC Models only)

1. Lift grassbox lid, squeeze together the two catches (Z7) and remove the cable spool.
2. Clean the cable spool (Z8) and the area it was located with a soft brush (Z9)
3. Replace the cable spool, ensuring it clicks into place.

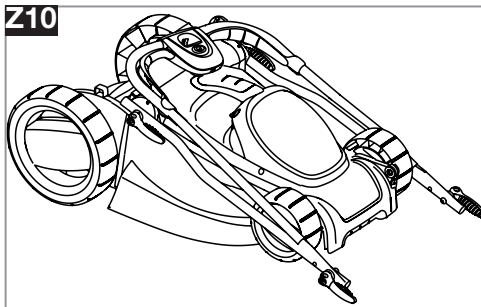
### Storing your Lawnmower:

- Loosen the wing knobs to enable the handles to be folded over the product (Z10).
- Store in a dry place where your lawnmower is protected from damage

### At the End of the Mowing Season

1. Replace blade, bolts, nuts or screws, if necessary.
2. Clean your lawnmower thoroughly.
3. Make sure that the electric cable is stored correctly to prevent damage.

Z10



## Fault Finding Hints

### Fails to Operate

1. Is the correct Starting procedure being followed?

See 'To Start your Lawnmower'

2. Is the Power Turned On?
3. Check the fuse in the plug, if blown replace.
4. Fuse continues to blow?

**Immediately disconnect from the mains electricity supply and consult your local approved Service Centre.**

### Poor Grass Collection

1. Disconnect from the mains electricity supply.
2. Clean the outside of the air intakes, the discharge chute and the underside of the deck.
3. Raise to a higher height of cut. See Cutting Height Adjustment.
4. **If poor collection persists.**

**Immediately disconnect from the mains electricity supply and consult your local approved Service Centre.**

### Excessive Vibration

1. Disconnect from the mains electricity supply.
2. Check that the blade is fitted correctly?
3. If the blade is damaged or worn, replace it with a new one.
4. If vibration persists?

**Immediately disconnect from the mains electricity supply and consult your local approved Service Centre.**

### Lawnmower becomes heavy to push

1. Disconnect from the mains electricity supply.
2. In long grass or uneven ground, the height of cut should be raised to a higher position. See Cutting Height Adjustment.
3. Check that the wheels and rollers can rotate freely.
4. If problem persists?

**Immediately disconnect from the mains electricity supply and consult your local approved Service Centre.**

## Service Recommendations

1. We strongly recommend that your product is serviced at least every twelve months, more often in a professional application.
2. Always use genuine Spare Parts.
3. Prepacked spares are available from most Husqvarna Outdoor Products stockists.
4. Your product is uniquely identified by a silver and black product rating label
5. If you have a problem with your machine contact your local Approved Service Centre ensuring you have full details of your product as described on the product rating label.
6. **Should it be necessary for work to be carried out**

**by your Service Centre, it is important to take your complete machine including cable and any extension cables used.**


A network of specialist dealers can be found in your local Yellow Pages. To obtain service on your product simply telephone or visit your local Service Centre. Should you require service under the terms of our guarantee the Service Centre will require proof of purchase.

**All of the centres listed stock genuine Spare Parts. NOTE: Our Service Repairers act on their own behalf and are not empowered to commit or legally bind Husqvarna UK Ltd. in any manner whatsoever.**

## Environmental Information

Husqvarna UK Ltd. products are manufactured under an Environmental Management System (ISO 14001) using, where practical, components manufactured in the most environmentally responsible manner, according to company procedures, and with the potential for recycling at the end of the products' life.

- Packaging is recyclable and plastic components have been labelled (where practical) for categorised recycling.
- Awareness of the environment must be considered when disposing of 'end-of-life' product.
- If necessary, contact your local authority for disposal information.

The symbol  on the product or on its packaging indicates that this product may not be treated as household waste. Instead it shall be handed over to the applicable collection point for the recycling of electrical and electronic equipment. By ensuring this product is disposed of correctly, you will help prevent potential negative consequences for the environment and human health, which could otherwise be caused by inappropriate waste handling of this product. For more detailed information about recycling of this product, please contact your local council office, your household waste disposal service or the shop where you purchased the product.

## Guarantee & Guarantee Policy

If any part is found to be defective due to faulty manufacture within the guarantee period, Husqvarna UK Ltd., through its Authorised Service Repairers will effect the repair or replacement to the customer free of charge providing:

- (a) The fault is reported directly to the Authorised Repairer.
  - (b) Proof of purchase is provided.
  - (c) The fault is not caused by misuse, neglect or faulty adjustment by the user.
  - (d) The failure has not occurred through fair wear and tear.
  - (e) The machine has not been serviced or repaired, taken apart or tampered with by any person not authorised by Husqvarna UK Ltd.
  - (f) The machine has not been used for hire.
  - (g) The machine is owned by the original purchaser.
  - (h) The machine has not been used commercially.
- \* This guarantee is additional to, and in no way diminishes the customers statutory rights.

Failures due to the following are not covered, therefore it is important that you read the instructions contained in this Operator's Manual and understand how to operate

and maintain your machine:

### Failures not covered by guarantee

- \* Replacing worn or damaged blades.
- \* Failures as a result of not reporting an initial fault.
- \* Failures as a result of sudden impact.
- \* Failures as a result of not using the product in accordance with the instructions and recommendations contained in this Operator's Manual.
- \* Machines used for hire are not covered by this guarantee.
- \* The following items listed are considered as wearing parts and their life is dependent on regular maintenance and are, therefore not normally subject to a valid warranty claim: Blades, Electric Mains cable

### \* Caution!

Husqvarna UK Ltd. does not accept liability under the warranty for defects caused in whole or part, directly or indirectly by the fitting of replacement parts or additional parts that are not either manufactured or approved by Husqvarna UK Ltd., or by the machine having been modified in any way.

## EC Declaration of Conformity

Husqvarna UK Ltd., Aycliffe Industrial Park  
Newton Aycliffe, Co. Durham, DL5 6UP, England

Declare under our sole responsibility that the product(s);

Category.....**Electric Rotary Lawnmower**  
Type(s) .....**MM320XC, MM360, MM360XC, MM420XC**  
Identification of Series.....**See Product Rating Label**  
Year of Construction.....**See Product Rating Label**

Conforms to the essential requirements & provisions of the following EC Directives:  
**98/37/EC (until 31.12.09), 2006/42/EC (from 01.01.10), 2004/108/EC, 2000/14/EC**  
based on the following EU harmonized standards applied:

**EN60335-1, EN60335-2-77, EN836, EN50366, EN55014-1, EN61000-3-2, EN61000-3-3**

The maximum A weighted sound pressure level  $L_{WA}$  at the operator's position, recorded on a sample of the above product(s) corresponds to the **Level** given in the table.

The maximum hand / arm vibration weighted value measured according to EN ISO 5349 on a sample of the above product(s) corresponds to the **Value** given in the table.

2000/14/EC: The Measured Sound Power  $L_{WA}$  & Guaranteed Sound Power  $L_{WA}$  values are according to the tabulated figures.

Conformity Assessment Procedure..... Annex VI  
Notified Body..... Intertek, Cleeve Road  
Leatherhead, Surrey  
KT22 7SB, England

Newton Aycliffe 23/10/2008  
M.Bowden  
Research & Development Director  
Husqvarna UK Ltd.




Type	MM340XC	MM360	MM360XC	MM420	MM420XC
Width of Cut (cm)	34	36	36	42	42
Speed of Rotation of Cutting Device (rpm)	3,850	3,850	3,850	3,600	3,600
Power (kW)	1.5	1.5	1.5	1.7	1.7
Measured Sound Power $L_{WA}$ (dB(A))	95	95	95	95	95
Guaranteed Sound Power $L_{WA}$ (dB(A))	96	96	96	96	96
<b>Level</b> (dB(A))	80.4	80.4	80.4	84.9	84.9
<b>Value</b> ( $m/s^2$ )	1.56	1.56	1.56	1.53	1.53
Weight (Kg)	12.8	12.4	12.8	13.1	14.7

Husqvarna UK Ltd.  
Aycliffe Industrial Park  
NEWTON AYCLIFFE  
Co.Durham DL5 6UP  
**ENGLAND**

**Telephone - (00) 44 1325 302302 Fax - (00) 44 1325 310339**

Our policy of continuous improvement means that the specification of products may be altered from time to time without prior notice.

