

SL 32 White

Art. 4355

SL 32 Blue

Art. 4356

D Betriebsanleitung
LED-Quellsteinbeleuchtung

GB Operating Instructions
LED Source Stone Lighting

F Mode d'emploi
Galet avec diode luminescente

NL Instructies voor gebruik
LED-bronsteenverlichting

S Bruksanvisning
LED Belysning för vattenstenar

I Istruzioni per l'uso
LED luminoso per pietra sorgiva

E Manual de instrucciones
Tobera con luz para guijarros

P Instruções de utilização
LED para iluminação de pedra de nascente

DK Brugsanvisning
LED Belysning til vandstene

D

GB

F

NL

S

I

E

P

DK

GARDENA LED Source Stone Lighting

SL 32 White / SL 32 Blue



This is a translation of the original instructions in German. Please read these operating instructions carefully and note the information given. Use these operating instructions to familiarise yourself with the LED Source Stone Lighting, its proper use and the notes on safety.



For safety reasons, children and youngsters under the age of 16 and people not familiar with these operating instructions must not use this LED Source Stone Lighting.

→ Please keep these operating instructions in a safe place.

Contents

1. Application area of your LED Source Stone Lighting	15
2. Safety Instructions	15
3. Initial Operation	17
4. Operation	19
5. Storage	19
6. Maintenance	20
7. Troubleshooting	21
8. Available Accessories	22
9. Technical Data	22
10. Service / Warranty	23

1. Application area of your GARDENA LED Source Stone Lighting

Correct use:

The GARDENA LED Source Stone Lighting is a 12 V low-voltage system for lighting source stones for outdoor use.

The LED Source Stone Lighting must not be used with salt water.

2. Safety Instructions

Electrical safety:

Before using the system, visually check that the LED Source Stone Lighting, the cable and transformer are undamaged.

A damaged product must not be used. If there is any damage, have the product checked by GARDENA Service or a qualified electrician.



DANGER! Electric shock!
Danger to life if the LED Source Stone Lighting is connected directly to 230 V AC (mains).

→ **Connect the LED Source Stone Lighting only to the 12 V transformer supplied.**

The information on the name plate of the transformer must match the mains power supply.

Use original GARDENA parts only, otherwise correct operation cannot be guaranteed.

Never carry the LED Source Stone Lighting by the cable.

Protect the cable from heat, oil and sharp edges.

Disconnect the transformer for storage, when out of use and before maintenance work.

The transformer must be operated via a fault-current circuit breaker with a rated fault current ≤ 30 mA (DIN VDE 0100-702).

→ Please consult a qualified electrician.

The transformer is approved for outdoor use.

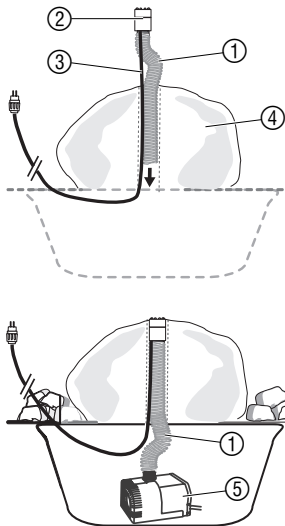
Do not expose the transformer to direct sunlight, direct rain or subject it to physical damage.

For Switzerland:

In Switzerland mobile appliances which are used outdoors, must be connected via a residual current device.

3. Operation

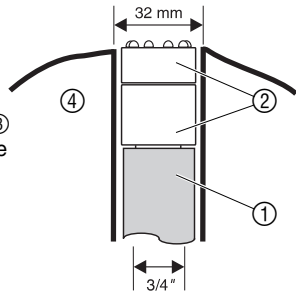
Installing the LED Source Stone Lighting:



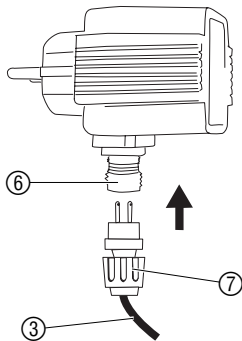
The following are needed for connecting the LED Source Stone Lighting:

- a $\frac{3}{4}$ " connecting hose
- a source stone with a \varnothing 32 mm bore
- a garden fountain pump

1. Attach hose ① to the LED Source Stone Lighting ② as far as it will go by a twisting movement.
2. Pass first the connecting cable ③ and then the hose ① through the bore in the source stone ④.
3. Shorten the hose ① to the appropriate length, *making it a little longer to allow the LED Source Stone Lighting to be pulled a little way further out of the source stone for maintenance at a later stage.*
4. Connect the hose ① to the pump ⑤.



**Connecting the LED
Source Stone Lighting
to the transformer:**

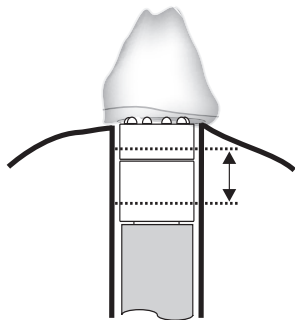


We recommend connecting the system only at temperatures $> 0^{\circ}\text{C}$. This will ensure that the cables have the necessary elasticity.

- Plug the connecting cable ③ of the LED Source Stone Lighting into the socket ⑥ on the transformer and tighten the locking nut ⑦ onto the connection ⑥.

4. Initial Operation

Switching on the LED Source Stone Lighting:



The socket outlet must be situated at a place protected from exposure to rain.

- **To switch on:** plug the transformer into a 230 V mains socket outlet.
- **To switch off:** unplug the transformer.

The appearance can be adjusted by the pump output or, to a small extent, by the position of the LED lighting unit.

Note:

If the LED Source Stone Lighting is pushed too deep into the bore in the source stone, the luminosity of the LEDs is reduced as a result.

5. Storage

Storage:

1. Disconnect the LED Source Stone Lighting from the connecting hose and clean it.
2. Store the LED Source Stone lighting and transformer at a place out of children's reach.

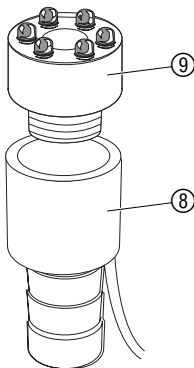
Disposal:
(in accordance with
RL2002/96/EC)



The product must not be added to normal household waste. It must be disposed of in line with local environmental regulations.
→ Important: Make sure that the unit is disposed of via your municipal recycling collection centre.

6. Maintenance

Cleaning the LED Source Stone Lighting:



DANGER! Electric shock!

→ Before cleaning, unplug the transformer and the pump from the mains.

Do not use any corrosive or abrasive cleaning media. The LED lighting unit is powered cable-free via induction.

1. Draw the LED Source Stone Lighting a little way out of the source stone.
2. Unscrew the LED lighting unit ⑨ from the holder ⑧ in an anti-clockwise direction.
3. Clean the LED lighting unit ⑨ and holder ⑧.
4. Screw the LED lighting unit ⑨ back into the holder ⑧ in a clockwise direction.
5. Re-insert the LED Source Stone Lighting into the source stone.

7. Troubleshooting



DANGER! Electric shock!

→ Before rectifying any faults, unplug the transformer and the pump from the mains.

Problem	Probable Cause	Remedy
LED Source Stone Lighting does not light up	Transformer not connected.	→ Connect transformer.
	Faulty cable or faulty LED lighting unit.	→ Unplug mains plug and starting from the transformer check all connections, cables and the LED lighting unit.



In the event of other faults please contact GARDENA Service.

Repairs should only be carried out by GARDENA service centres or dealers authorised by GARDENA.

8. Available Accessories

GARDENA 3/4" connecting hoses	For connection to the LED Source Stone Lighting.	
GARDENA LED lighting unit	In the colours white, blue, red, yellow, green and "colour change".	Available through GARDENA Service
GARDENA 3-way adapter	For connecting up to 3 LED Source Stone Lighting systems to one transformer.	Available through GARDENA Service
GARDENA Remote Control Set	For switching on and off by remote control, outdoors or indoors.	Art. 7680

9. Technical Data

	SL 32 White (Art. 4355)	SL 32 Blue (Art. 4356)
<i>Transformer:</i>		
Mains voltage / frequency	230 V AC / 50 Hz	230 V AC / 50 Hz
Nominal output	10.5 VA	10.5 VA
Output voltage	12 V AC	12 V AC

	SL 32 White (Art. 4355)	SL 32 Blue (Art. 4356)
LED Source Stone Lighting:		
Hose connection	¾" hose connection	¾" hose connection
Connecting cable	10 m	10 m
Input	3.0 VA	3.0 VA
Illuminants	6 white LEDs	6 blue LEDs
Ambient temperature	0°C - 40°C	0°C - 40°C

9. Service / Warranty

Warranty

GARDENA guarantees this product for 2 years from date of purchase. This guarantee covers all serious defects of the unit that can be proved to be material or manufacturing faults. Under warranty we will either replace the unit or repair it free of charge if the following conditions apply:

- The unit must have been handled properly and in keeping with the requirements of the operating instructions.
- Neither the purchaser or a non-authorized third party have attempted to repair the unit.

This manufacturer's guarantee does not affect the user's existing warranty claims against the dealer/seller.

If you have any problems with your Fountain Pump Set, please contact our Service or return the defective unit together with a short description of the problem – in case of guarantee, with a copy of the receipt – postage paid to one of the GARDENA Service Centres listed on the back of this leaflet.

D **Produkthaftung**

Wir weisen ausdrücklich darauf hin, dass wir nach dem Produkthaftungsgesetz nicht für durch unsere Geräte hervorgerufene Schäden einzustehen haben, sofern diese durch unsachgemäße Reparatur verursacht oder bei einem Teileaustausch nicht unsere Original GARDENA Teile oder von uns freigegebene Teile verwendet werden und die Reparatur nicht vom GARDENA Service oder dem autorisierten Fachmann durchgeführt wird. Entsprechendes gilt für Ergänzungsteile und Zubehör.

GB **Product Liability**

We expressly point out that, in accordance with the product liability law, we are not liable for any damage caused by our units if it is due to improper repair or if parts exchanged are not original GARDENA parts or parts approved by us, and, if the repairs were not carried out by a GARDENA Service Centre or an authorised specialist. The same applies to spare parts and accessories.

F **Responsabilité**

Nous vous signalons expressément que GARDENA n'est pas responsable des dommages causés par ses appareils, dans la mesure où ces dommages seraient causés suite à une réparation non conforme, dans la mesure où, lors d'un échange de pièces, les pièces d'origine GARDENA n'auraient pas été utilisées, ou si la réparation n'a pas été effectuée par le Service Après-Vente GARDENA ou l'un des Centres SAV agréés GARDENA. Ceci est également valable pour tout ajout de pièces et d'accessoires autres que ceux préconisés par GARDENA.

NL **Productaansprakelijkheid**

Wij wijzen er nadrukkelijk op, dat wij op grond van de wet aansprakelijkheid voor producten niet aansprakelijk zijn voor schade ontstaan door onze apparaten, indien deze door onvakkundige reparatie veroorzaakt zijn, of er bij het uitwisselen van onderdelen geen gebruik gemaakt werd van onze originele GARDENA onderdelen of door ons vrijgegeven onderdelen en de reparatie niet door de GARDENA technische dienst of de bevoegde vakman uitgevoerd werd. Ditzelfde geldt voor extra-onderdelen en accessoires.

DK Produktansvar

Vi gør udtrykkeligt opmærksom på at i henhold til produktansvarsloven er vi ikke ansvarlige for skader forårsaget af vores udstyr, hvis det skyldes uautoriserede reparationer eller hvis dele er skiftet ud og der ikke er anvendt originale GARDENA dele eller dele godkendt af os, eller hvis reparationerne ikke er udført af GARDENA-service eller en autoriseret fagmand. Det samme gælder for ekstra udstyr og tilbehør.

D EU-Konformitæts erklæring Maschinenverordnung (9. GSGVO) / EMVG / Niedersp. RL

Der Unterzeichnete GARDENA Manufacturing GmbH, Hans-Lorensen-Str. 40, D-89079 Ulm, bestätigt, dass das nachfolgend bezeichnete Gerät in der von uns in Verkehr gebrachten Ausführung die Anforderungen der harmonisierten EU-Richtlinien, EU-Sicherheitsstandards und produktspezifischen Standards erfüllt. Bei einer nicht mit uns abgestimmten Änderung des Gerätes verliert diese Erklärung ihre Gültigkeit.

GB EU Certificate of Conformity

The undersigned GARDENA Manufacturing GmbH, Hans-Lorensen-Str. 40, D-89079 Ulm, hereby certifies that, when leaving our factory, the unit indicated below is in accordance with the harmonised EU guidelines, EU standards of safety and product specific standards. This certificate becomes void if the unit is modified without our approval.

F Certificat de conformité aux directives européennes

Le constructeur, soussigné : GARDENA Manufacturing GmbH, Hans-Lorensen-Str. 40, D-89079 Ulm, déclare qu'à la sortie de ses usines le matériel neuf désigné ci-dessous était conforme aux prescriptions des directives européennes énoncées ci-après et conforme aux règles de sécurité et autres règles qui lui sont applicables dans le cadre de l'Union européenne. Toute modification portée sur ce produit sans l'accord express de GARDENA supprime la validité de ce certificat.

NL EU-overeenstemmingsverklaring

Ondergetekende GARDENA Manufacturing GmbH, Hans-Lorensen-Str. 40, D-89079 Ulm, bevestigt, dat het volgende genoemde apparaat in de door ons in de handel gebrachte uitvoering voldoet aan de eis van, en in overeenstemming is met de EU-richtlijnen, de EU-veiligheidsstandaard en de voor het product specifieke standaard. Bij een niet met ons afgestemde verandering aan het apparaat verliest deze verklaring haar geldigheid.

Bezeichnung des Gerätes:	LED-Quellsteinbeleuchtung	Typ:	Art.-Nr.:
Description of the units:	LED Source Stone Lighting	Type:	Art. No.:
Désignation du matériel :	Galet avec diode luminescente	Type :	Référence :
Omschrijving van de apparaten:	LED-bronsteenverlichting	Tip:	Art. nr.:
Produktbeskrivning:	LED Belysning för vattenstenar	Tip: SL 32 White	Art.nr. : 4355
Descrizione dei prodotti:	LED luminoso per pietra sorgiva	Modello:	Art. :
Descripción de la mercancía:	Tobera con luz para guijarros	Tipo: SL 32 Blue	Art. Nº: 4356
Descrição do aparelho:	LED para iluminação de pedra de nascente	Tipo:	Art. Nº:
Beskrivelse af enhederne:	LED Belysning til vandstene	Type:	Varenr. :
EU-Richtlinien:		Harmonisierte EN :	EN 60598-1
EU directives:			
Directives européennes :	2006/95/EC		EN 60598-2-7
EU-richtlijnen:			
EU direktiv:	2004/108/EC		EN 60598-2-18
Direttive UE:			
Normativa UE:	93/68/EC		EN 61558-1
Directrizes da UE:			
EU Retningslinier:			EN 61558-2-6
Anbringningsjahr der CE-Kennzeichnung:			
Year of CE marking:			
Date d'apposition du marquage CE :			
Installatiejaar van de CE-aanduiding:			
CE-Mærkningsår:	2008		
Anno di rilascio della certificazione CE:			
Colocación del distintivo CE:			
Ano de marcação pela CE:			
CE-Mærkningsår:			

Ulm, den 01.05.2008
Ulm, 01.05.2008
Fait à Ulm, le 01.05.2008
Ulm, 01-05-2008
Ulm, 2008.01.05.
Ulm, 01.05.2008
Ulm, 01.05.2008
Ulm, 01.05.2008
Ulm, 01.05.2008

Der Bevollmächtigte
Authorised representative
Représentant légal
Gemachtigde
Behörig Firmatecknare
Rappresentante autorizzato
Representante autorizado
Representante autorizado
Teknisk direktør



Peter Lameli
Vice President

Deutschland / Germany

GARDENA
Manufacturing GmbH
Central Service
Hans-Lorenser-Straße 40
D-89079 Ulm
Produktfragen:
(+49) 731 490-123
Reparaturen:
(+49) 731 490-290
servicegardena.com

Argentina

Husqvarna Argentina S.A.
Vera 745
(C1414A00) Buenos Aires
Phone: (+54) 11 4858-5000
diego.poggi@ar.husqvarna.com

Australia

Husqvarna Australia Pty. Ltd.
Locked Bag 18
Gosford NSW 2250
Phone: (+61) (0) 2 4372 1500
customer.service@
husqvarna.com.au

Austria / Österreich

Husqvarna Austria GmbH
Consumer Products
Industriezeile 36
4010 Linz
Tel.: (+43) 732 77 01 01 - 90
consumer.service@
husqvarna.at

Belgium

GARDENA Belgium NV/SA
Sterrebeekstraat 163
1930 Zaventem
Phone: (+32) 2 720 92 12
Mail: info@gardena.be

Brazil

Palash Comércio e Importação Ltda.
Rua São João do Araguaia, 338
Jardim Califórnia – Barueri –
SP - Brasil – CEP 06409-060
Phone: (+55) 11 4198-9777
eduardopalash.com.br

Bulgaria

Хускварна България ЕООД
1799 София
Бул. „Андрей Ляпчев“ № 72
Тел.: (+359) 2 80 99 424
www.husqvarna.bg

Canada

GARDENA Canada Ltd.
100 Summerlea Road
Brampton, Ontario L6T 4X3
Phone: (+1) 905 792 93 30
info@gardenacanada.com

Chile

Antonio Martinic y Cia Ltda.
Cassillas 272, Centro de Cassillas
Santiago de Chile
Phone: (+56) 2 20 10 708
garfar_cl@yahoo.com

Costa Rica

Compania Exim Euroiberoamericana
S.A.
Los Colegios, Moravia,
200 metros al Sur del Colegio Saint
Francis - San José
Phone: (+506) 297 68 83
exim_euro@racsa.co.cr

Croatia

KLIS d.o.o.
Stanciceva 79
10419 Vukovina
Phone: (+385) 1 622 777 0
gardena@klis-trgovina.hr

Cyprus

FARMOKIPIKI LTD
P.O. Box 7098
74, Digeni Akrita Ave.
1641 Nicosia
Phone: (+357) 22 75 47 62
condam@spidernet.com.cy

Czech Republic

GARDENA spol. s r.o.
Tuřanka 115
627 00 Brno
Phone: (+420) 548 217 777
gardena@gardenabrno.cz

Denmark

Husqvarna Consumer Outdoor
Products
Salgsafdelning Danmark
Box 9003
S-200 39 Malmö
info@gardena.dk

Estonia

Husqvarna Eesti OÜ
Consumer Outdoor Products
Kesk tee 10, Aaviku küla
Rae vald, Harju maakond 75305
kontakt.etj@husqvarna.ee

Finland

Oy Husqvarna Ab
Consumer Outdoor Products
Lautatarhankatu 8 B / PL 3
00581 HELSINKI
info@gardena.fi

France

GARDENA France
Immeuble Exposial
9 - 11 allée des Pierres Mayettes
ZAC des Barbanniers, B.P. 99
-F- 92232 GENNEVILLIERS
cedex

Tél. (+33) 01 40 85 30 40
service.consommateurs
gardena.fr

Great Britain

Husqvarna UK Ltd
Preston Road
Aycliffe Industrial Park
Newton Aycliffe
County Durham
DL5 6UP
info.gardena@
husqvarna.co.uk

Greece

HUSQVARNA GREECE S.A.
Branch of Koropi
Ifestou 33A
Industrial Area Koropi
194 00 Athens – Greece
V.A.T. EL094094640
Phone: (+30) 210 66 20 225
info@husqvarna-consumer.gr

Hungary

Husqvarna
Magyarország Kft.
Ezred u. 1 - 3
1044 Budapest
Phone: (+36) 80 20 40 33
gardena@gardena.hu

Iceland

O. Johnson & Kaaber
Tunguhalsi 1
110 Reykjavik
ooj@ojk.is

Ireland

Michael McLoughlin & Sons
Hardware Limited
Long Mile Road
Dublin 12

Italy

GARDENA Italia S.p.A.
Via Donizetti 22
20020 Lainate (Mi)
Phone: (+39) 02.93.94.79.1
info@gardenaitalia.it

Japan

KAKUICHI Co. Ltd.
Sumitomo Realty &
Development Kojimachi
BLDG., 8F, 5-1 Nibanncyo, Chiyoda-
ku, Tokyo 102-0084
Phone: (+81) 33 264 4721
m_ishihara@kaku-ichi.co.jp

Latvia

SIA „Husqvarna Latvija”
Consumer Outdoor Products
Bākūžu iela 6, Rīga, LV-1024
info@husqvarna.lv

Lithuania

UAB Husqvarna Lietuva
Consumer Outdoor Products
Ateities pl. 77C
LT-52104 Kaunas
centras@husqvarna.lt

Luxembourg

Magasins Jules Neuberg
39, rue Jacques Stas
Luxembourg-Gasperich 2549
Case Postale No. 12
Luxembourg 2010
Phone: (+352) 40 14 01
api@neuberg.lu

Netherlands

GARDENA Nederland B.V.
Postbus 50176
1305 AD ALMERE
Phone: (+31) 36 521 0000
info@gardena.nl

Neth. Antilles

Jonka Enterprises N.V.
Sta. Rosa Weg 196
P.O. Box 8200, Curaçao
Phone: (+599) 9 767 66 55
pgm@jonka.com

New Zealand

Husqvarna New Zealand Ltd.
PO Box 76437
Manukau City 2241
Phone: (+64) (09) 9202410

Norway

Husqvarna
Consumer Outdoor Products
Salgskontor Norge
Kleverteien 6
1540 Vestby
info@gardena.no

Poland

Husqvarna Poland Spółka z o.o.
Oddział w Szymanowie
Szymanów 9 d
05-532 Baniocza
Phone: (+48) 22 727 56 90
gardena@gardena.pl

Portugal

GARDENA Portugal Lda.
Sintra Business Park
Edifício 1, Fracção 0-G
2710-089 Sintra
Phone: (+351) 21 922 85 30
info@gardena.pt

Romania

MADEX INTERNATIONAL SRL
Soseaua Odaii 117-123,
Sector 1,
București, RO 013603
Phone: (+40) 21 352 76 03
madex@ines.ro

Russia

ООО ГАРДЕНА РУС
123007, г. Москва
Хорошевское шоссе, д. 32А
Тел.: (+7) 495 380 31 92
info@gardena-rus.ru

Singapore

Hy-Ray PRIVATE LIMITED
40 Jalan Pemimpin
#02-08 Tat Ann Building
Singapore 577185
Phone: (+65) 6253 2277
shiyang@hyray.com.sg

Slovak Republic

GARDENA spol. s r.o.
Tuřanka 115
627 00 Brno
Phone: (+420) 548 217 777
gardena@gardenabrno.cz

Slovenia

GARDENA d.o.o.
Brodišče 15
1236 Trzin
Phone: (+386) 1 580 93 32
servis@gardena.si

South Africa

GARDENA
South Africa (Pty.) Ltd.
P.O. Box 11534
Vorna Valley 1686
Phone: (+27) 11 315 02 23
sales@gardena.co.za

Spain

GARDENA IBÉRICA S.L.U.
C/ Basauri, nº 6
La Florida
28023 Madrid
Phone: (+34) 91 708 05 00
atencioncliente@gardena.es

Sweden

GARDENA
Husqvarna Consumer
Outdoor Products
Försäljningskontor Sverige
Box 9003
200 39 Malmö
info@gardena.se

Switzerland / Schweiz

Husqvarna Schweiz AG
Consumer Products
Industriestrasse 10
5506 Mägenwil
Phone: (+41) (0) 848 800 464
info@gardena.ch

Turkey

GARDENA/ Dost Diş Ticaret
Mümesillik A.Ş. Sanayi
Çad. Adil Sokak No. 1
Kartal - İstanbul
Phone: (+90) 216 38 93 939
info@gardena-dost.com.tr

Ukraine / Україна

ТОВ «ГАРДЕНА УКРАЇНА»
Васильківська, 34, 204-Г
03022, Київ
Тел. (+38 044) 498 39 02
info@gardena.ua

4355-20.960.01/0608
© GARDENA
Manufacturing GmbH
D-89070 Ulm
http://www.gardena.com