

5 Starting and stopping GARDENA R40Li

See chapters 4.3 and 4.4 in the Operator's manual.

STARTING

1. Open the cover by pressing the *STOP* button.
2. Set the main switch to position 1. When you do this for the first time, a start up sequence starts where you select a four digit PIN code among other things.
3. Press the *START* button.
4. Close the cover.

STOPPING

Press the *STOP* button.



6 Adjust the mower to suit your garden

See chapters 6.3 and 6.5 in the Operator's Manual

Here you will find some tips on important settings for your GARDENA R40Li. All settings for your GARDENA R40Li are made via the menu functions.

ADJUST THE MOWER TO SUIT THE SIZE OF YOUR LAWN

The mowing results depend on mowing time. Adjust the mowing time to suit your garden using the *Timer* function. If the mower cuts too often, the lawn will appear trampled down. If the mower cuts too seldom, the lawn will not be properly mown.

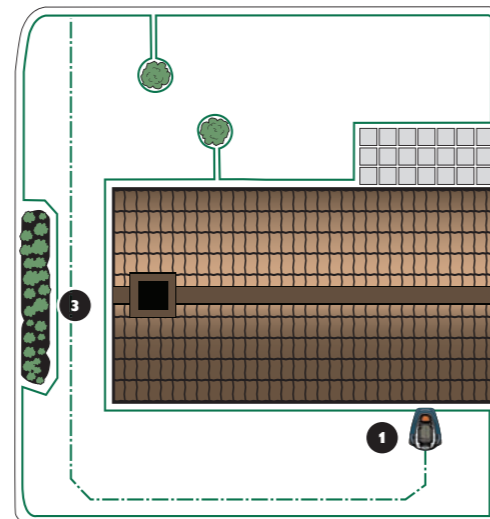
TIMER

You decide what times during the day and days of the week the mower is to work. The GARDENA R40Li cuts around 30 m² per hour and day. For example; If your garden consists of 300 m² of grass, the mower should work on average 10 hours per day.

TEST RUN THE MOWER THROUGH NARROW PASSAGES

Narrow passages in the garden make it difficult for the mower to find the charging station. Use the *Calibrate guide* function to test that the mower can travel through the narrowest passage.

1. Place the mower in the charging station
2. Select *Calibrate guide* (*Settings - Calibrate Guide*) in the mower's menu and press *OK*. Then press the *Start* button and close the cover.
3. Check that the mower follows the guide wire through the passage.
 - a. If the mower travels through the passage, the test is complete.
 - b. If the mower does not travel through the passage: Check that the guide wire has been laid according to the instructions in chapter 3.6 in the Operator's Manual.



The right to make changes without prior notice is reserved.

Copyright © 2012 GARDENA Manufacturing GmbH. All rights reserved.

www.gardena.com/int

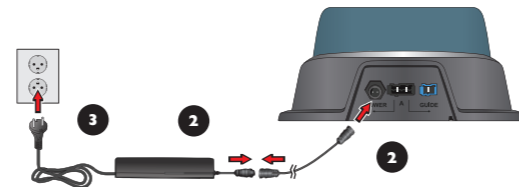


Getting started with GARDENA R40Li

1 Placement of and connecting the charging station

See chapter 3.2 in the Operator's Manual.

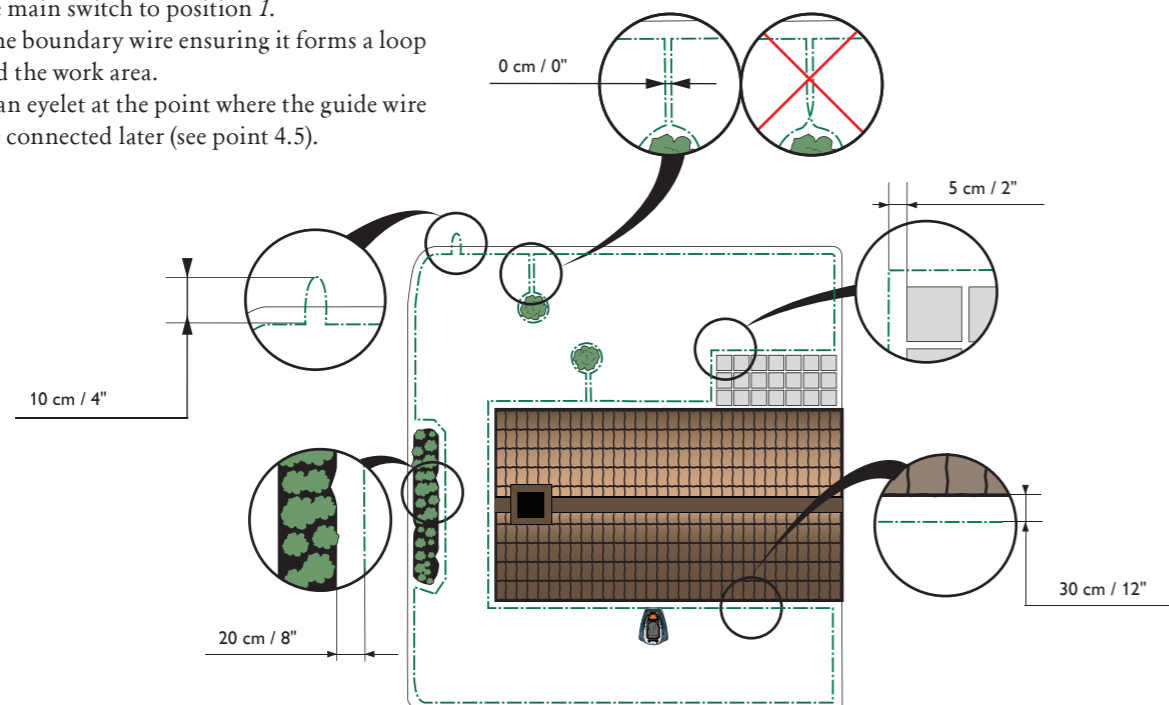
1. Place the charging station at a central position in the work area, with a lot of open space in front of the charging station and on a relatively horizontal surface.
2. Connect the transformer's low voltage cable to the charging station and the transformer.
3. Connect the transformer to a 230 V wall socket.



2 Charging the battery and placement of the boundary wire

See chapters 3.3 and 3.4 in the Operator's Manual.

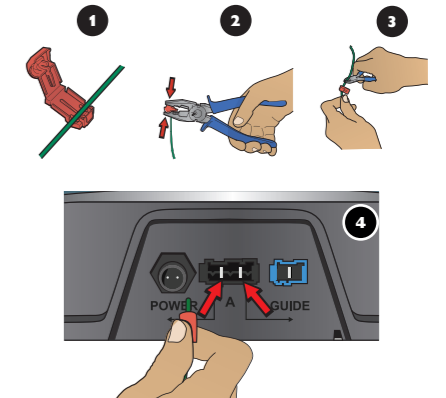
1. Place the R40Li in the charging station to charge the battery while you are laying the boundary wire. Set the main switch to position I.
2. Run the boundary wire ensuring it forms a loop around the work area.
3. Make an eyelet at the point where the guide wire will be connected later (see point 4.5).



3 Connecting the boundary wire

See chapter 3.5 in the Operator's Manual.

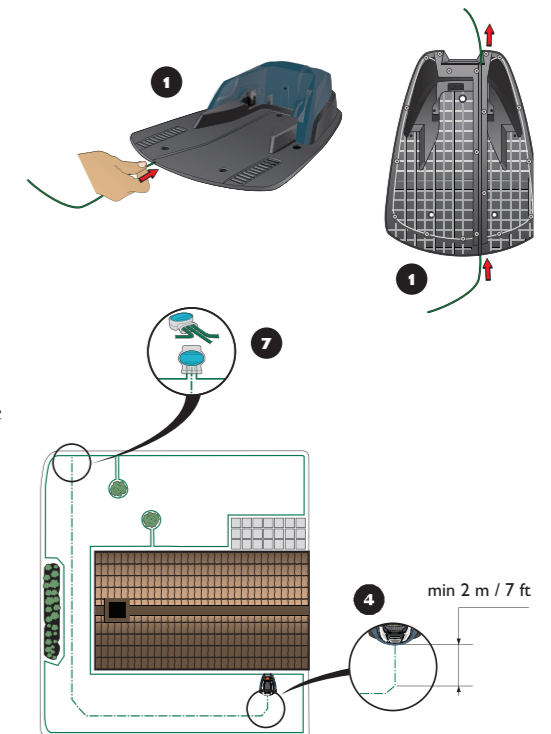
1. Open the connector and lay the wire ends in the recesses on each connector.
2. Press the connectors together using a pair of pliers.
3. Cut off any surplus boundary wire. Cut 1 to 2 cm above the connectors.
4. Press the connectors onto the contact pins, marked A, on the charging station. It is important that the right-hand wire is connected to the right-hand contact pin, and the left-hand wire to the left-hand pin.



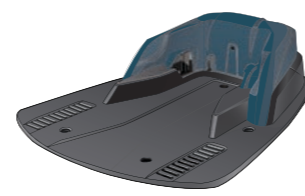
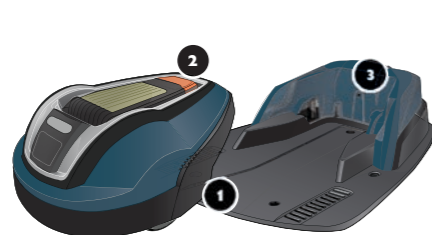
4 Placement of and connecting the guide wire

See chapter 3.6 in the Operator's Manual.

1. Run the guide wire through the slot at the bottom of the charging station.
2. Fit the connector to the guide wire in the same way as for the boundary wire, according to the instructions above.
3. Fasten the connector to the contact pin marked Guide on the charging station.
4. Lay the guide wire at least 2 metres straight out from the front edge of the charging station.
5. Run the guide wire to the point on the boundary loop the connection will be made. Avoid laying the wire at tight angles.
6. Cut the boundary wire with a wire cutters at the centre of the eyelet that was made in point 2.3.
7. Connect the guide wire to the boundary wire using the accompanying couplers. Press the couplers completely together with a pair of pliers.



1. Main switch
2. STOP button
3. LED for function check of the boundary and guide wires
4. Cutting height indication
5. Display
6. Keypad



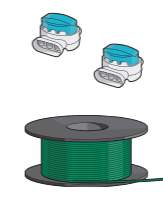
Charging station



Transformer



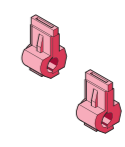
Low voltage cable



Boundary wire and couplers



Staples



Connectors



Measurement gauge