

5

STARTING AND STOPPING

See chapters 4.3 and 4.4 in the Operator's Manual.

STARTING

1. Open the cover by pressing the *STOP* button.
2. Set the main switch to position *I*. When you do this for the first time, a start up sequence starts where you select a four digit PIN code among other things.
3. Press the *START* button.
4. Close the cover.

STOPPING

Press the *STOP* button.



6

ADJUSTING THE ROBOTIC LAWNMOWER TO SUIT YOUR GARDEN

See chapters 6.3 and 6.4 in the Operator's Manual.

Here you will find some tips on important settings for your robotic lawnmower. All settings for your robotic lawnmower are made via the menu functions.

ADJUSTING THE ROBOTIC LAWNMOWER TO SUIT THE SIZE OF YOUR LAWN

The mowing results depend on mowing time. Adjust the mowing time to suit your garden using the *Timer* function. If the robotic lawnmower cuts too often: The lawn will look trampled. If the robotic lawnmower cuts too seldom: The lawn will not be properly mown.

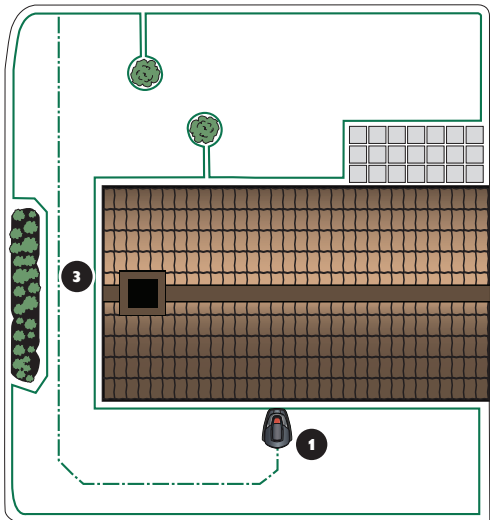
TIMER

You decide what times during the day the robotic lawnmower is to work. The robotic lawnmower mows about 45 m² per hour and day (approx. 30 m² for the Automower® 305). For example; if your garden consists of 360 m² of grass, the robotic lawnmower should work on average 8 hours per day (12 hours for the Automower® 305).

ADJUSTING THE ROBOTIC LAWNMOWER FOR NARROW PASSAGES

Narrow passages in the garden make it difficult for the robotic lawnmower to find the charging station. Use the *Test OUT* function to test if the robotic lawnmower is able to pass through the narrowest passages.

1. Place the robotic lawnmower in the charging station.
2. Select *Test OUT (Installation - Test OUT)* in the robotic lawnmower's menu and press OK. Then press the Start button and close the cover.
3. Check that the robotic lawnmower follows the guide wire through the passage.
 - a. If the robotic lawnmower gets through the passage: The test is complete!
 - b. If the robotic lawnmower does not get through the passage: Change the Guide width from Wide to Medium. If required, the guide width can also be changed from Medium to Narrow.



AUTOMOWER® is a trademark owned by Husqvarna AB. Copyright © 2013 HUSQVARNA. All rights reserved.



QUICK GUIDE

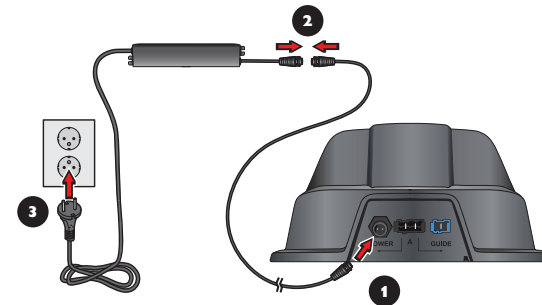
HUSQVARNA AUTOMOWER®
305/308

GETTING STARTED WITH HUSQVARNA'S ROBOTIC LAWNMOWER

1 PLACEMENT OF AND CONNECTING THE CHARGING STATION

See chapter 3.2 in the Operator's Manual.

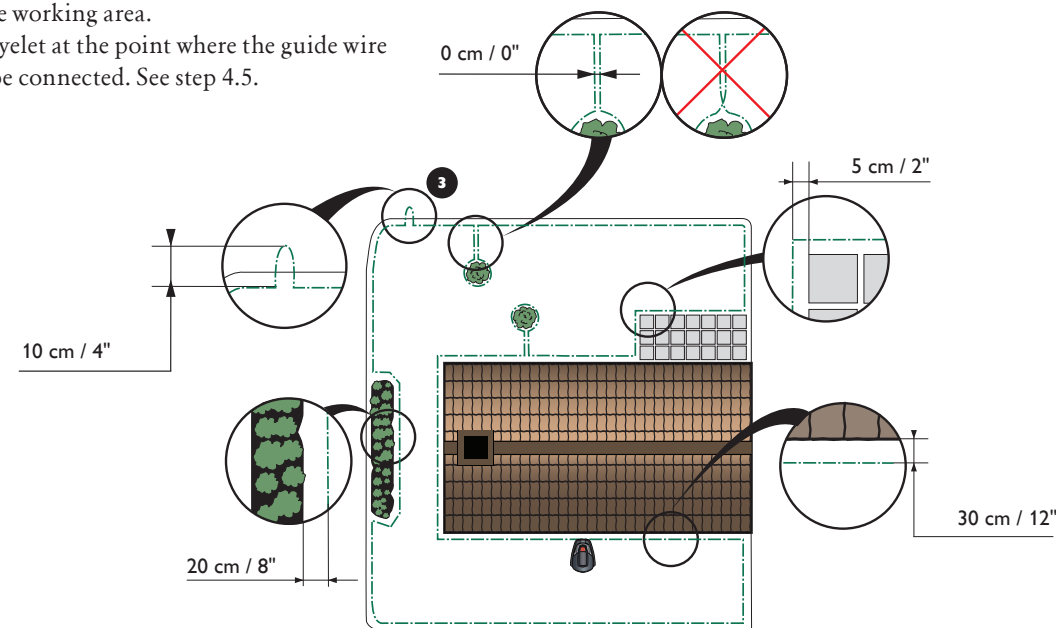
1. Place the charging station at a central position in the working area, with a lot of open space in front of the charging station and on a relatively horizontal surface.
2. Connect the transformer's low voltage cable to the charging station and the transformer.
3. Connect the transformer to a 230 V wall socket.



2 CHARGING THE BATTERY AND PLACEMENT OF THE BOUNDARY WIRE

See chapters 3.3 and 3.4 in the Operator's Manual.

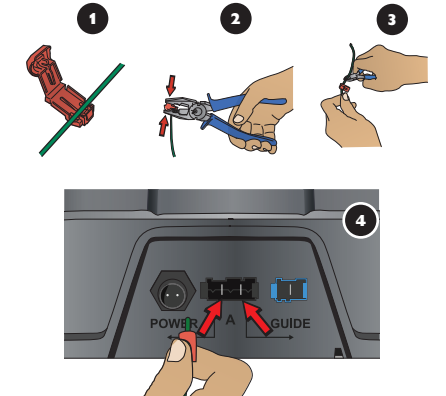
1. Place the robotic lawnmower in the charging station to charge the battery while the boundary wire is laid. Set the main switch to position I.
2. Lay the boundary wire so that it forms a loop around the working area.
3. Make an eyelet at the point where the guide wire will later be connected. See step 4.5.



3 CONNECTING THE BOUNDARY WIRE

See chapter 3.5 in the Operator's Manual.

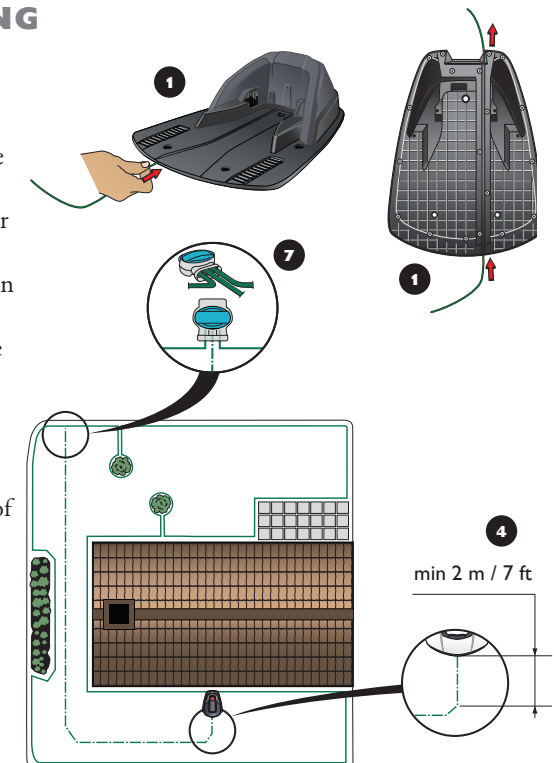
1. Open the connectors and lay the wire ends in the recesses on each connector.
2. Press the connectors together using a pair of pliers.
3. Cut off any surplus boundary wire. Cut 1 to 2 cm above the connectors.
4. Press the connectors onto the contact pins, marked A, on the charging station. It is important that the right-hand wire is connected to the right-hand contact pin, and the left-hand wire to the left-hand pin.



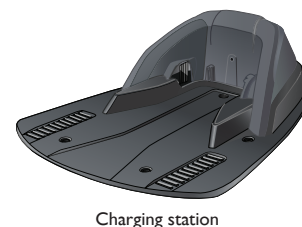
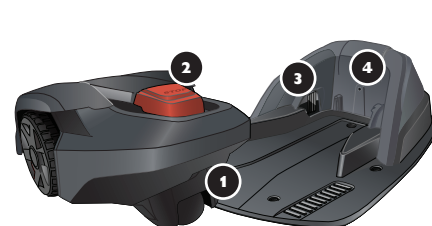
4 PLACEMENT OF AND CONNECTING THE GUIDE WIRE

See chapter 3.6 in the Operator's Manual.

1. Run the guide wire through the slot at the bottom of the charging station.
2. Fit the connector to the guide wire in the same way as for the boundary wire, according to the instructions above.
3. Fasten the connector to the contact pin marked Guide on the charging station.
4. Lay the guide wire at least 2 metres straight out from the front edge of the charging station.
5. Run the guide wire to the point on the boundary loop the connection will be made. Avoid laying the wire at tight angles.
6. Cut the boundary wire with a wire cutters at the centre of the eyelet that was made in step 2.3.
7. Connect the guide wire to the boundary wire using the accompanying couplers. Press the couplers completely together with a pair of pliers.



1. Main switch
2. STOP button
3. Charging strip
4. LED for function check of the boundary and guide wires
5. Cutting height indication
6. Display
7. Keypad



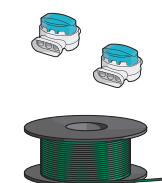
Charging station



Transformer



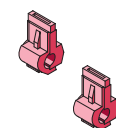
Low voltage cable



Boundary wire and couplers



Staples



Connectors



Measurement gauge