

# 5 STARTING AND STOPPING

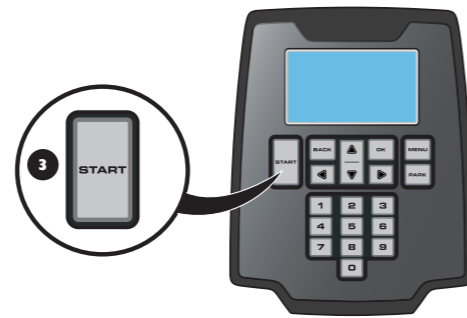
See chapters 4.3 and 4.4 in the Operator's Manual.

## STARTING

1. Open the hatch by pressing the *STOP* button.
2. Set the main switch to position *I*. When you do this for the first time, a start up sequence starts where you select a four digit PIN code among other things.
3. Press the *START* button.
4. Close the hatch.

## STOPPING

Press the *STOP* button.



# 6 TEST DOCKING AND ACCESSIBILITY

See chapters 3.6 and 6.8 in the Operator's Manual.

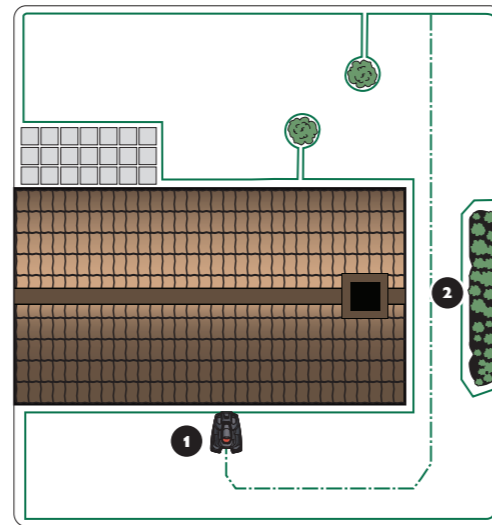
Here you can find a number of tips relating to the positioning of the guide wire in narrow passages as well as settings for the mower's behaviour in narrow passages.

## TEST DOCKING

1. It is important that the robotic lawnmower can easily dock with the charging station to ensure safe operation. Use the *Installation > Find charging station > Overview > Test* function to test this. If the robotic lawnmower has difficulty docking, the position of the charging station must be reviewed. See chapter 3.2 in the Operator's Manual.

## TEST ACCESSIBILITY

2. Narrow passages in the garden make it difficult for the robotic lawnmower to find the charging station. Use the *Installation > Lawn coverage > Overview > Test* function to test that the robotic lawnmower can travel through the narrowest passage. If the test fails, the position of the guide wire must be reviewed and possible manual setting changes made. See chapters 3.6 and 6.8 in the Operator's Manual.



# 7 ADJUSTING THE ROBOTIC LAWNMOWER TO SUIT YOUR GARDEN

See chapter 6 in the Operator's Manual.

Here you will find some tips on important settings for your robotic lawnmower. All settings for your robotic lawnmower are made via the menu functions.

## ADJUSTING THE ROBOTIC LAWNMOWER TO SUIT THE SIZE OF YOUR LAWN

The mowing results depend on mowing time. Adjust the mowing time to suit your garden using the *Timer* function. If the robotic lawnmower cuts too much: The lawn will look trampled. If the robotic lawnmower cuts too little: The lawn will not be properly mown.

## TIMER

You decide what times during the day the robotic lawnmower is to work. The robotic lawnmower mows about 135 m<sup>2</sup> per hour and day (approx. 90 m<sup>2</sup> for Automower® 320). For example; if your garden consists of 1,200 m<sup>2</sup> of lawn, the robotic lawnmower should work on average 9 hours per day (13 hours for Automower® 320).



AUTOMOWER® is a trademark owned by Husqvarna AB. Copyright © 2013 HUSQVARNA. All rights reserved.



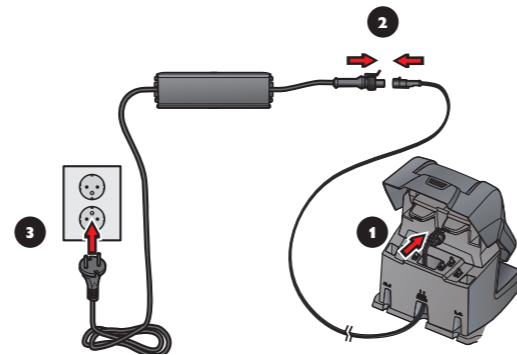
**QUICK GUIDE**  
**HUSQVARNA AUTOMOWER®**  
**320/330X**

# GETTING STARTED WITH HUSQVARNA'S ROBOTIC LAWNMOWER

## 1 PLACEMENT OF AND CONNECTING THE CHARGING STATION

See chapter 3.2 in the Operator's Manual.

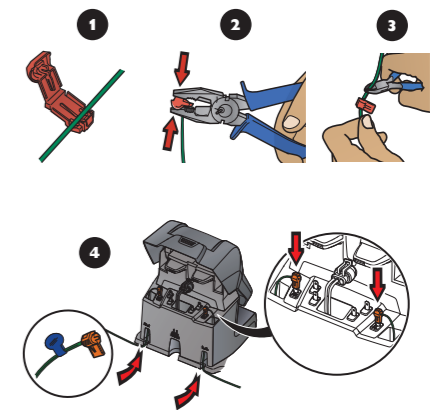
1. Place the charging station at a central position in the working area, with a lot of open space in front of the charging station and on a relatively horizontal surface.
2. Connect the transformer's low voltage cable to the charging station and the transformer.
3. Connect the transformer to a 230 V wall socket.



## 3 CONNECTING THE BOUNDARY WIRE

See chapter 3.5 in the Operator's Manual.

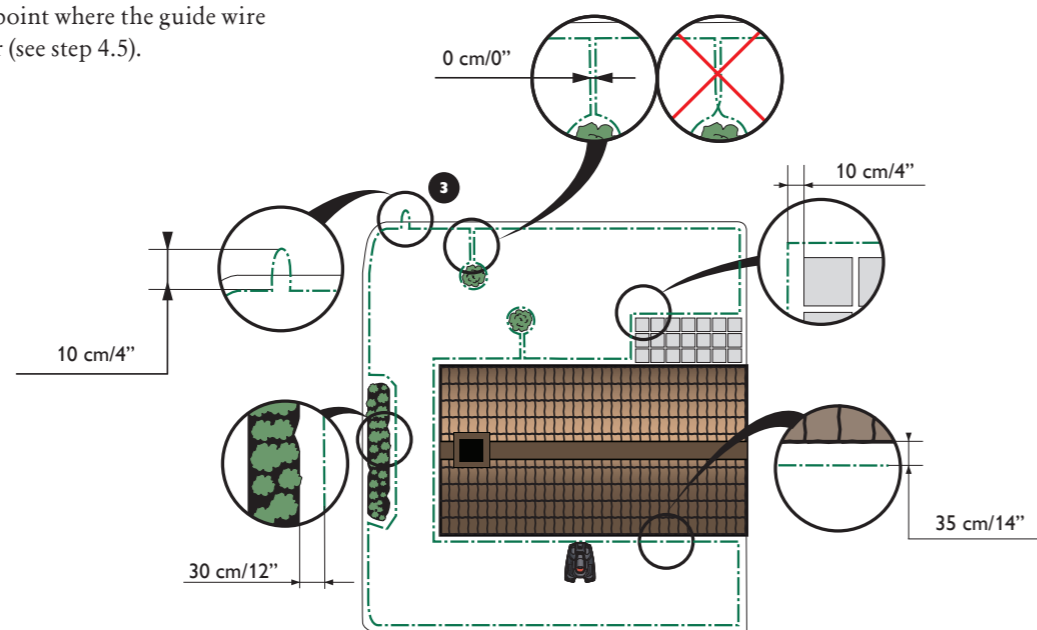
1. Open the connectors and lay the wire ends in the recesses on each connector.
2. Press the connectors together using a pair of pliers.
3. Cut off any surplus boundary wire. Cut 1 to 2 cm above the connectors.
4. Press the connectors onto the contact pins, marked A, on the charging station. It is important that the right-hand wire is connected to the right-hand contact pin, and the left-hand wire to the left-hand pin.



## 2 CHARGING THE BATTERY AND PLACEMENT OF THE BOUNDARY WIRE

See chapters 3.3 and 3.4 in the Operator's Manual.

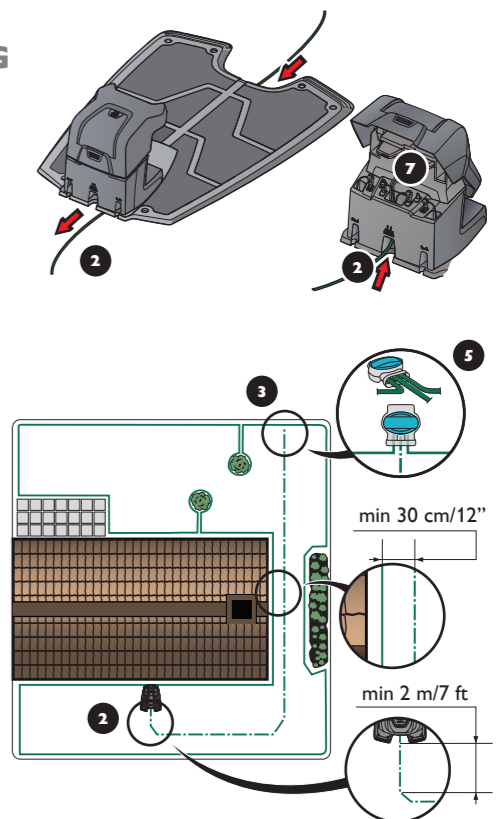
1. Place the robotic lawnmower in the charging station to charge the battery while the boundary wire is laid. Set the main switch to position 1.
2. Lay the boundary wire so that it forms a loop around the working area.
3. Make an eyelet at the point where the guide wire will be connected later (see step 4.5).



## 4 PLACEMENT OF AND CONNECTING THE GUIDE WIRE

See chapter 3.6 in the Operator's Manual.

1. Narrow passages in the garden make it difficult for the robotic lawnmower to find the charging station. The robotic lawnmower can be lead to remote garden areas using the guide wire. The guide wire also helps the robotic lawnmower to quickly find the charging station.
2. Lay the guide wire under the charging station and at least 2 metres straight out from the front edge of the charging station.
3. Run the guide wire to the point on the boundary wire the connection will be made. Avoid laying the wire at tight angles.
4. Cut the boundary wire with a wire cutters at the centre of the eyelet that was made in step 2.3.
5. Connect the guide wire to the boundary wire using the accompanying couplers. Press the coupler completely together with a pair of pliers.
6. Fit a connector to the other end of the guide wire. Fasten the connector to the contact pin marked G1 on the charging station.



1. Main switch
2. STOP button
3. Charging strip
4. LED for function check of the boundary and guide wires
5. Display
6. Keypad

