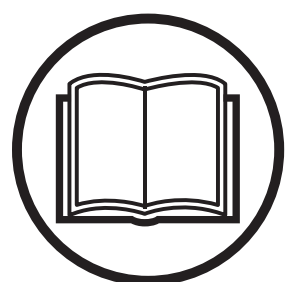


# **Operator's manual**

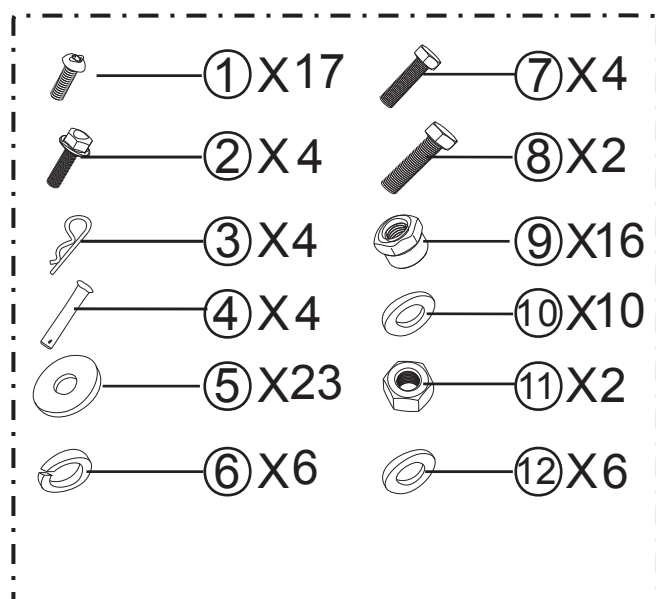
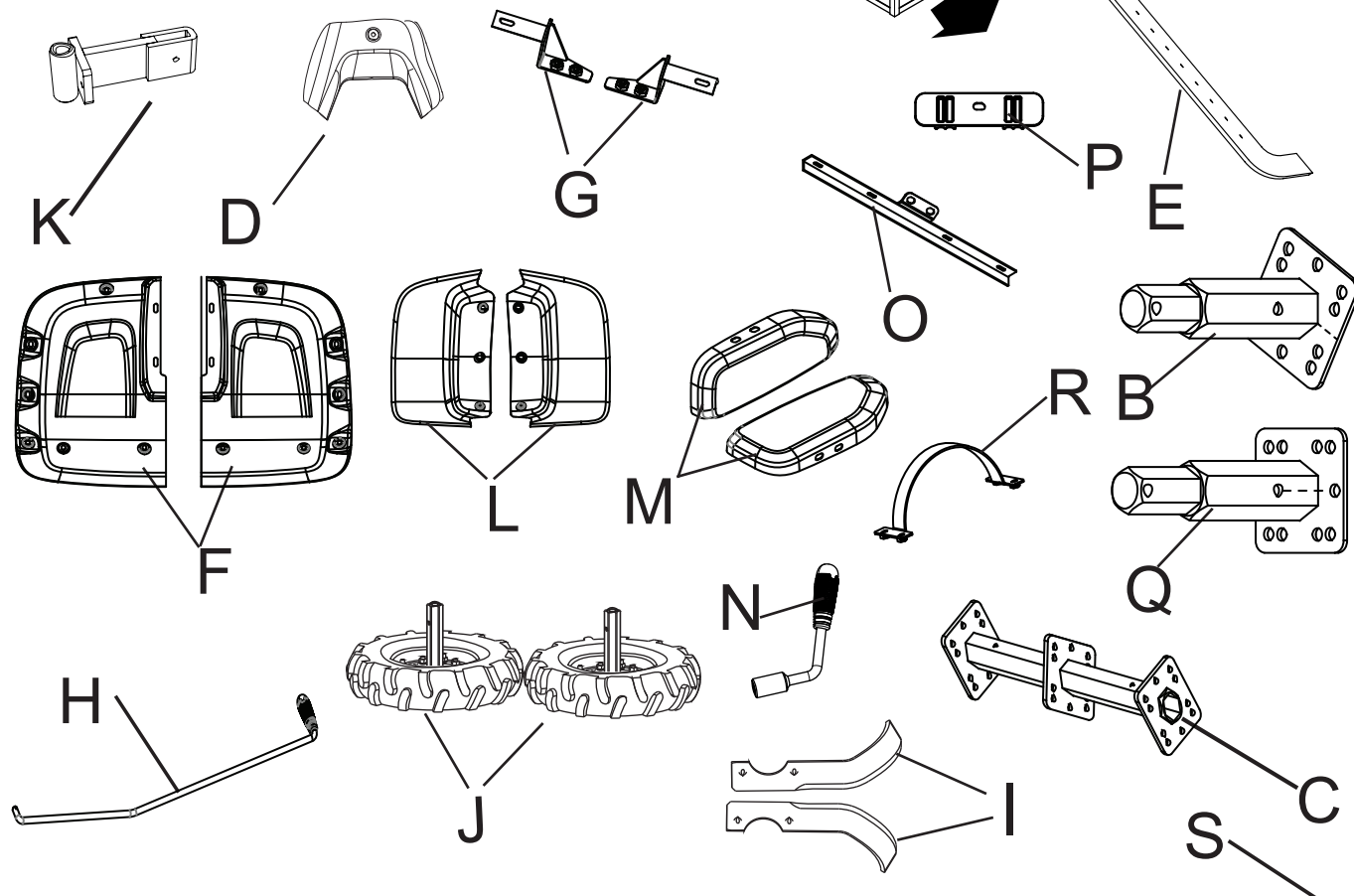
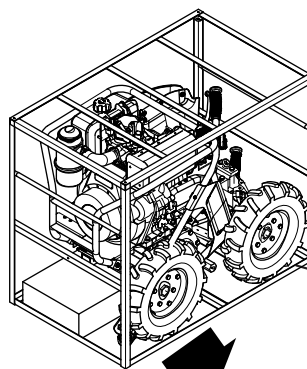
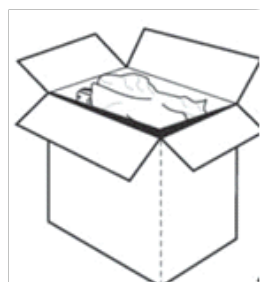
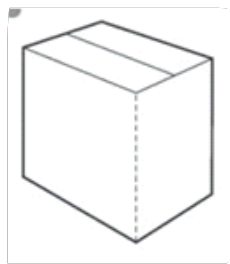
# **TF 544**

Please read the operator's manual carefully and make sure you understand the instructions before using the machine.



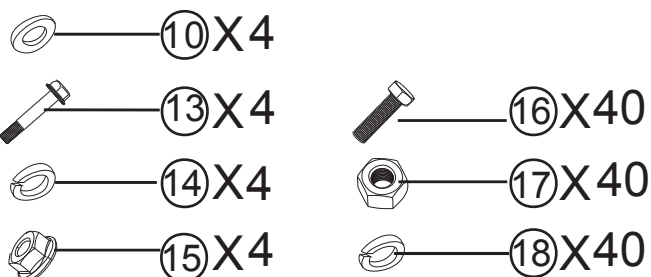
**English**



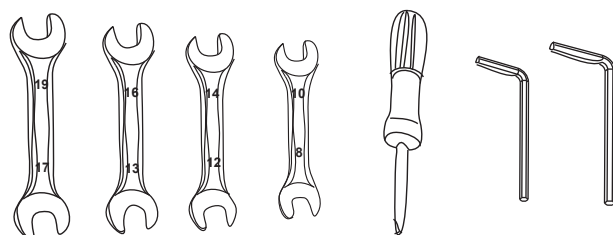


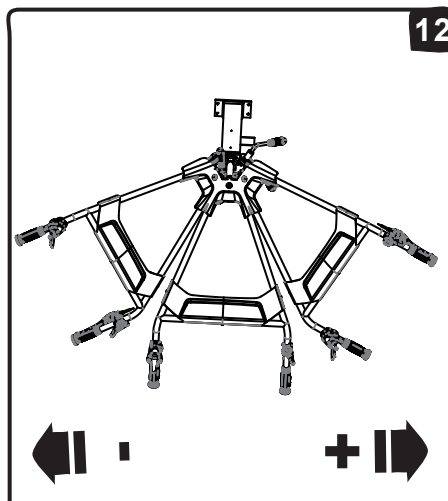
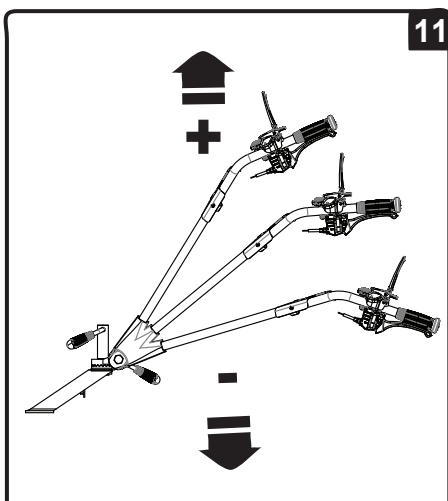
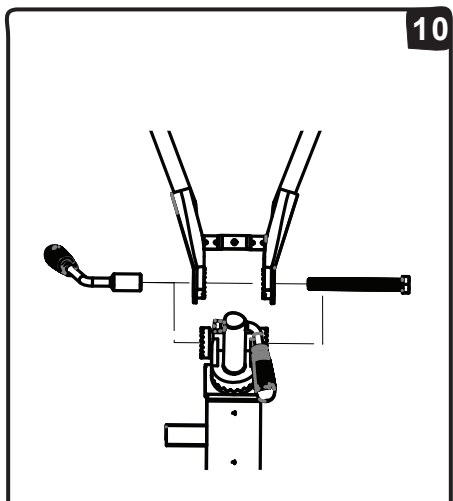
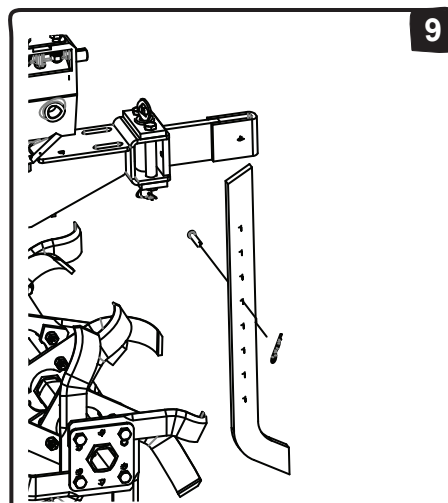
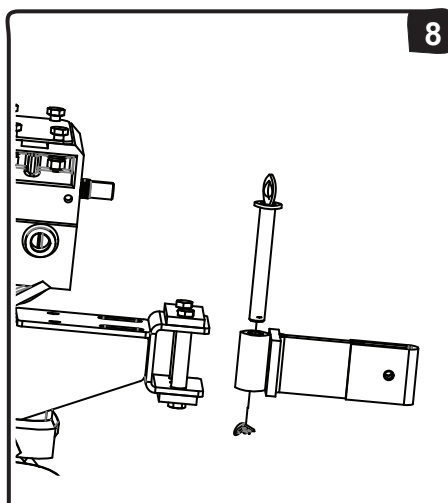
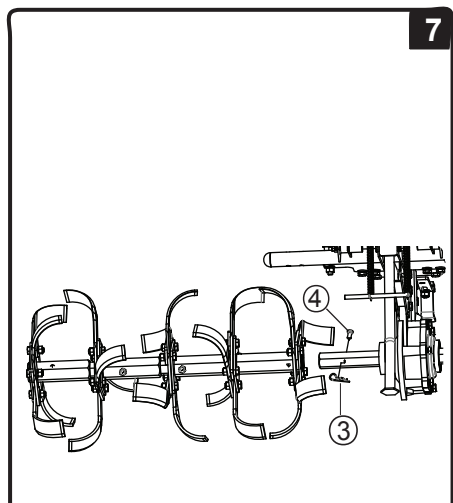
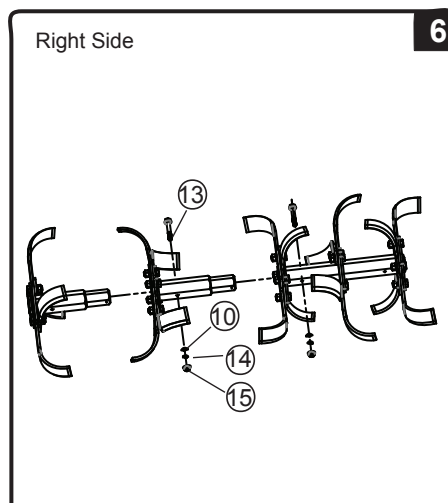
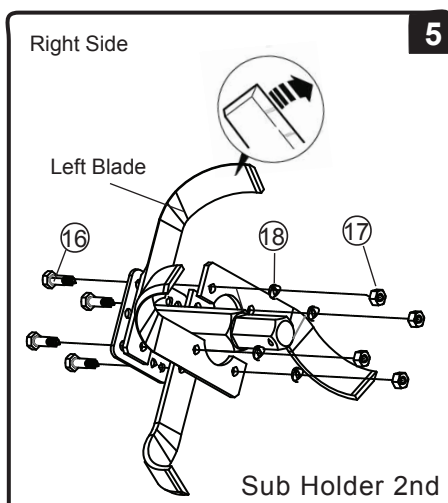
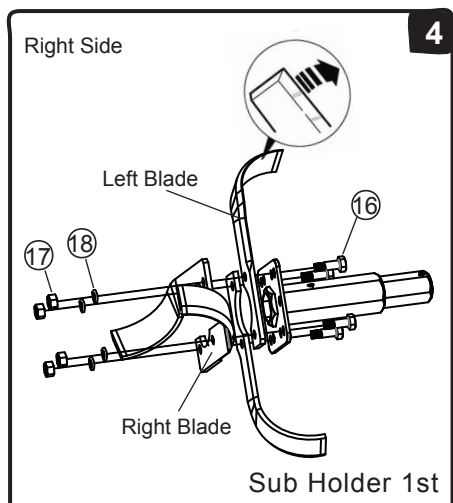
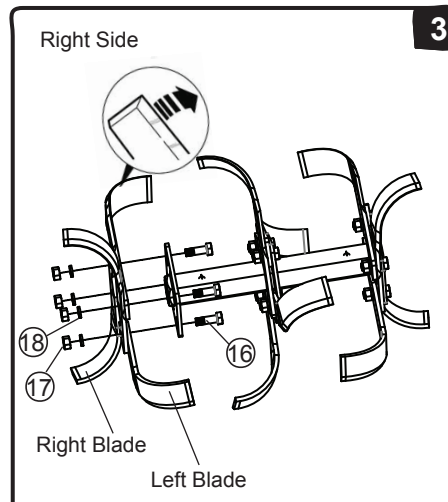
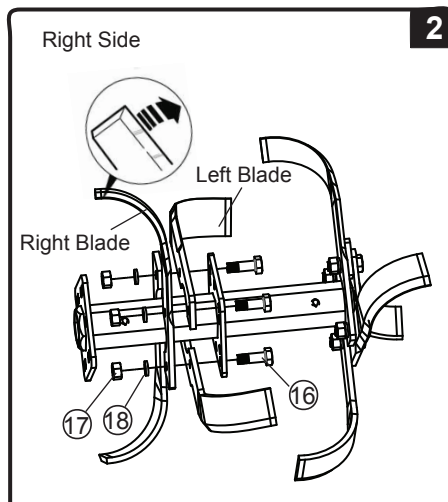
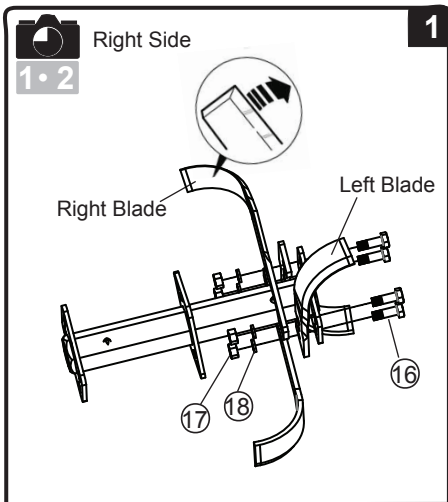
T

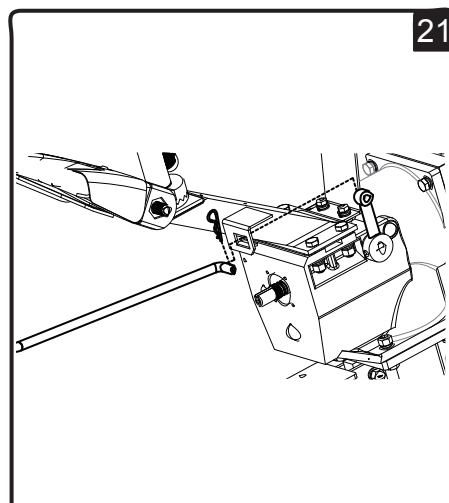
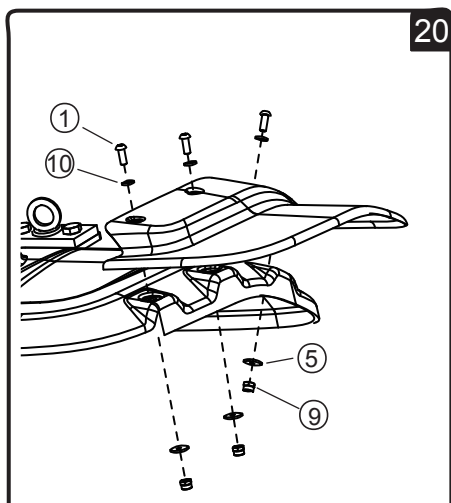
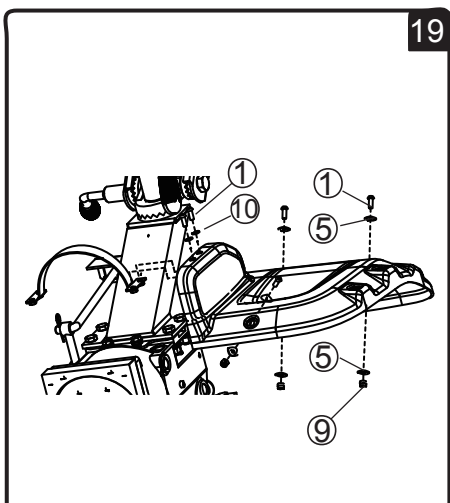
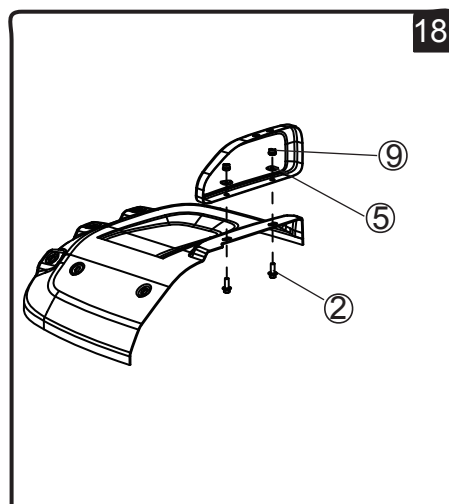
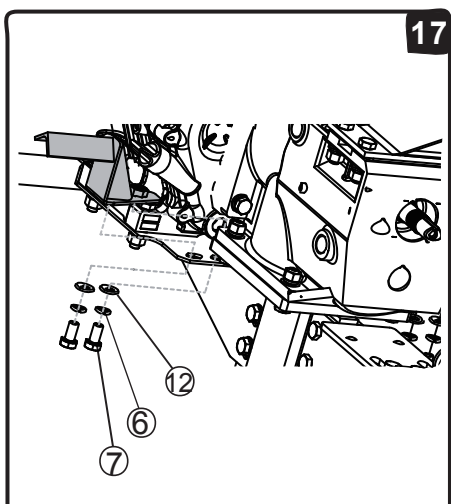
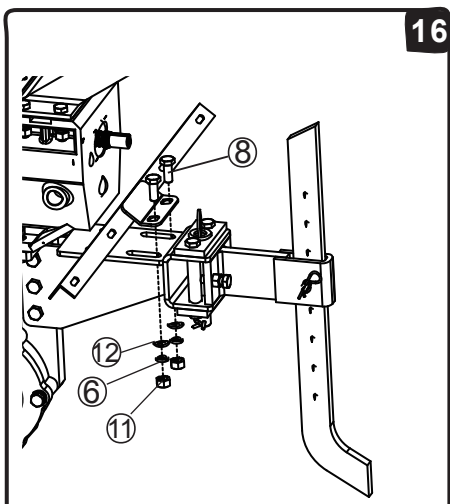
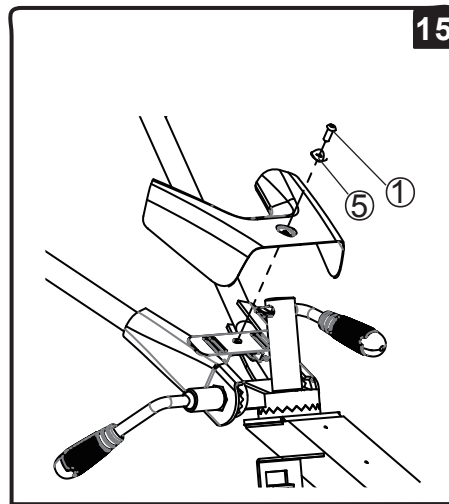
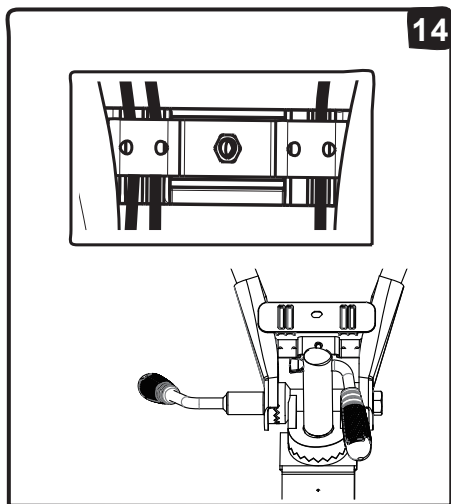
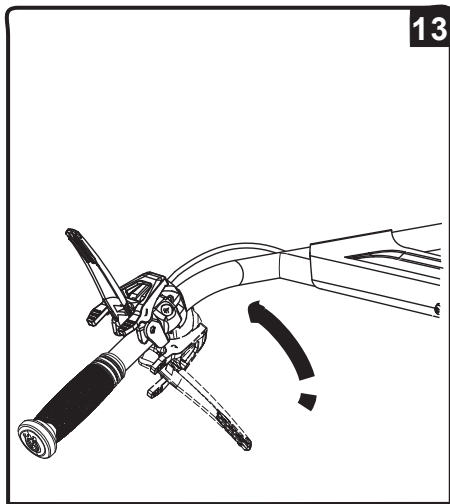
For tines only

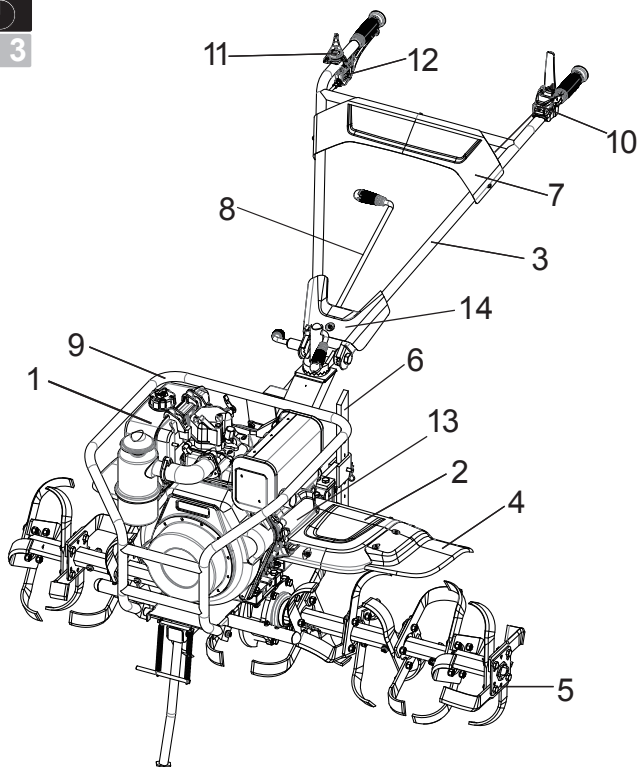


W





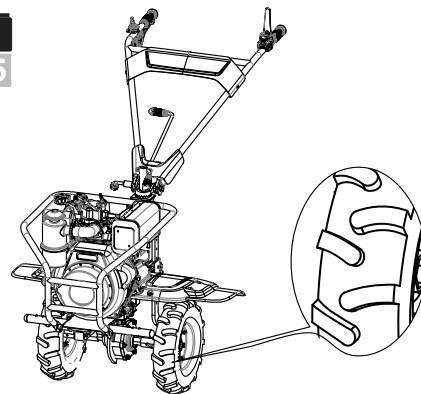
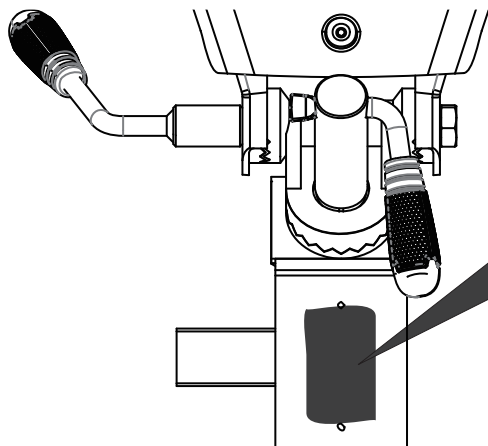


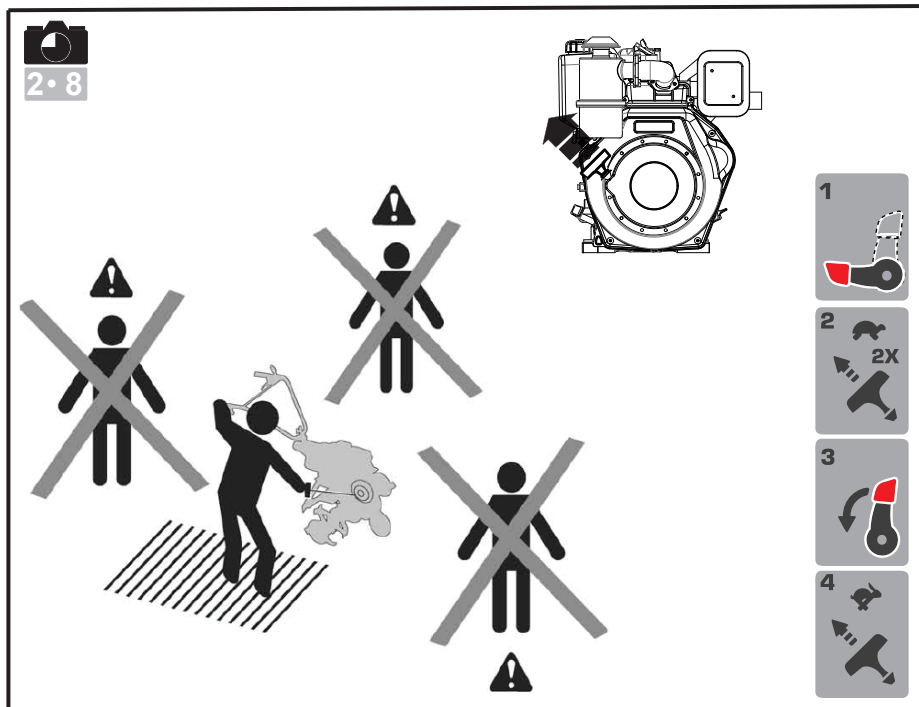
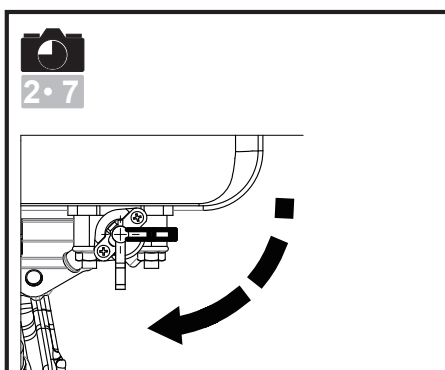
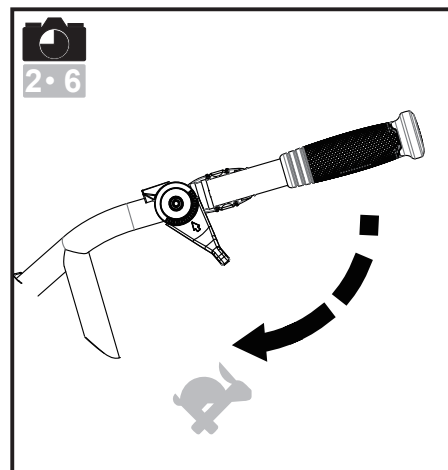
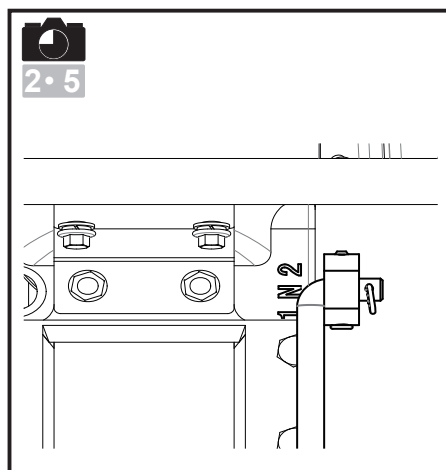
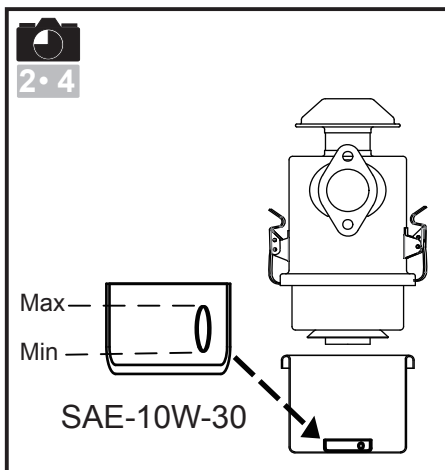
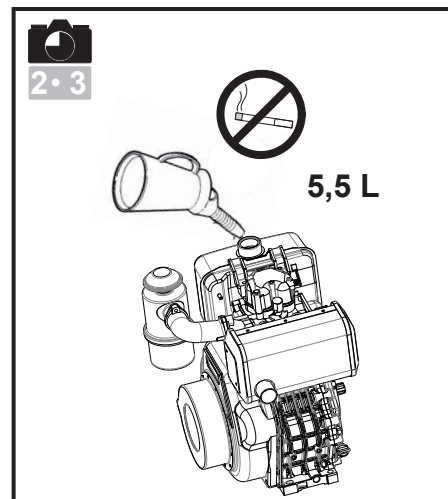
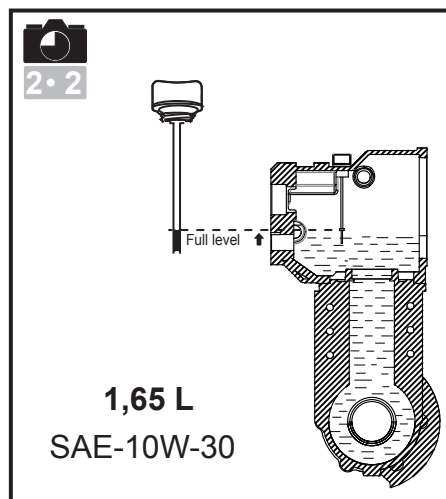
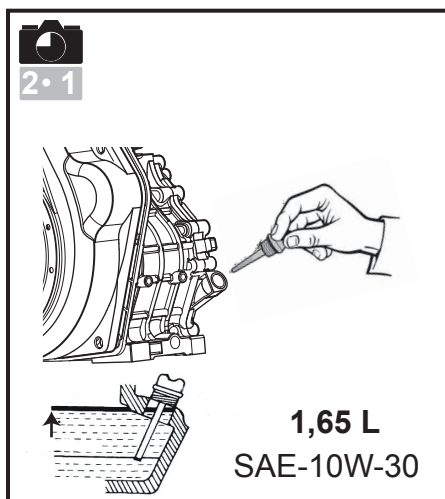


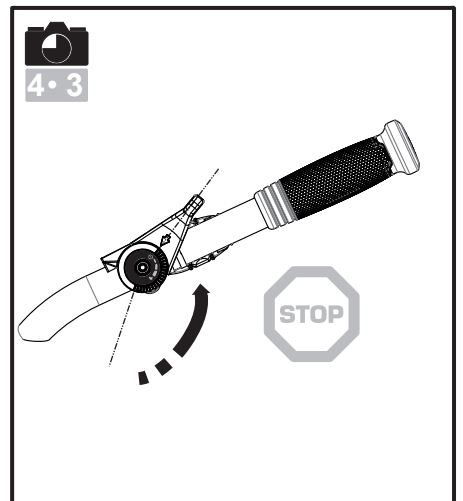
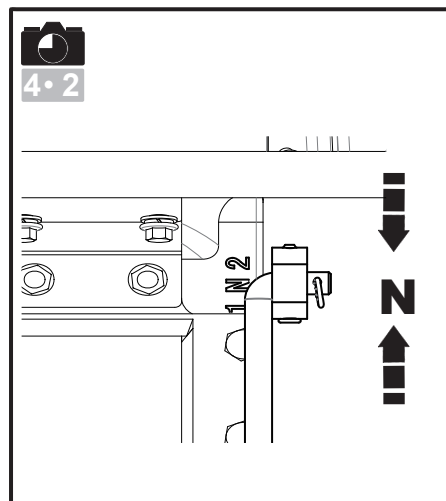
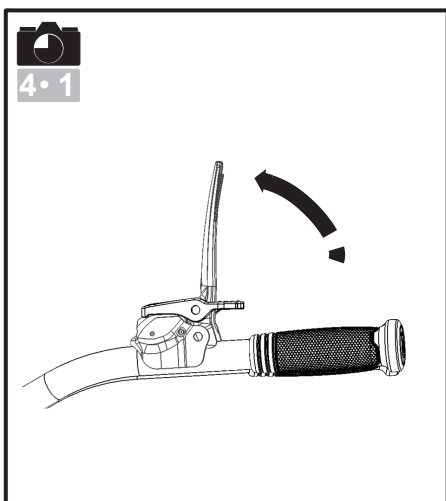
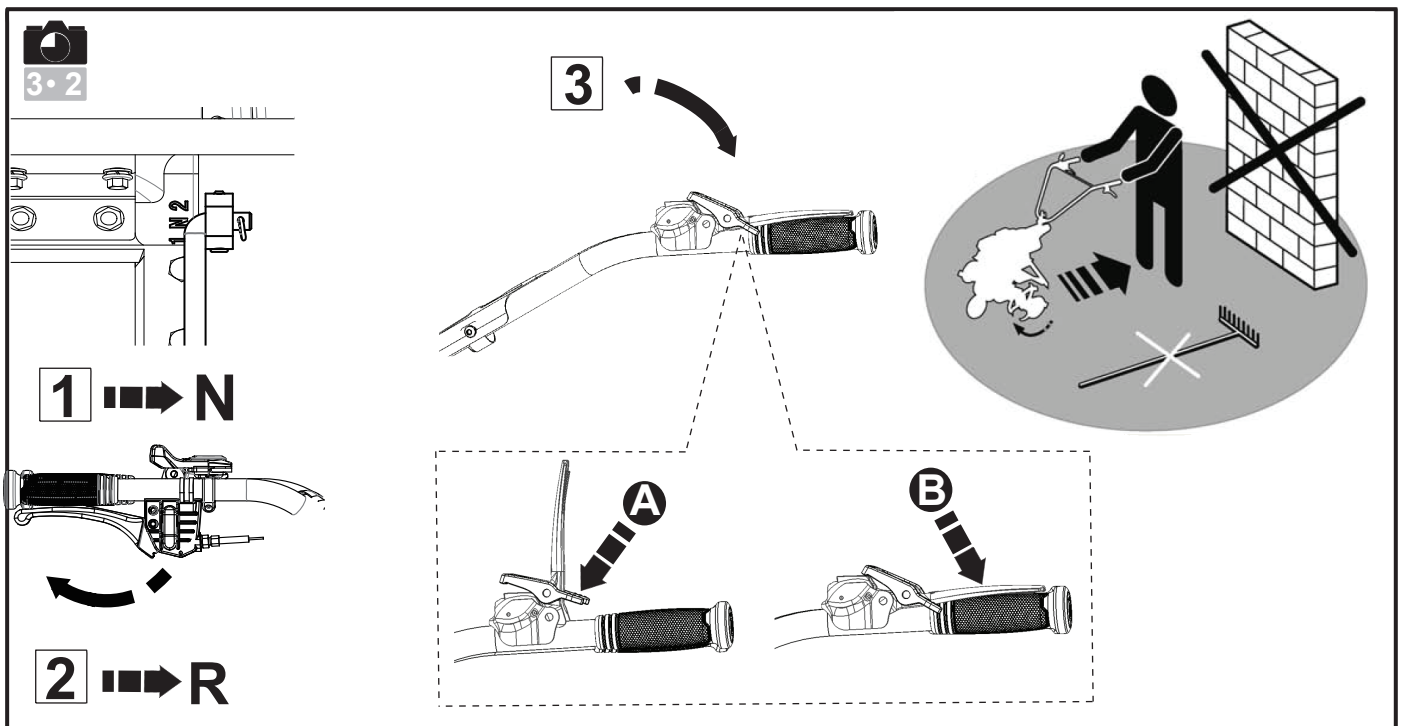
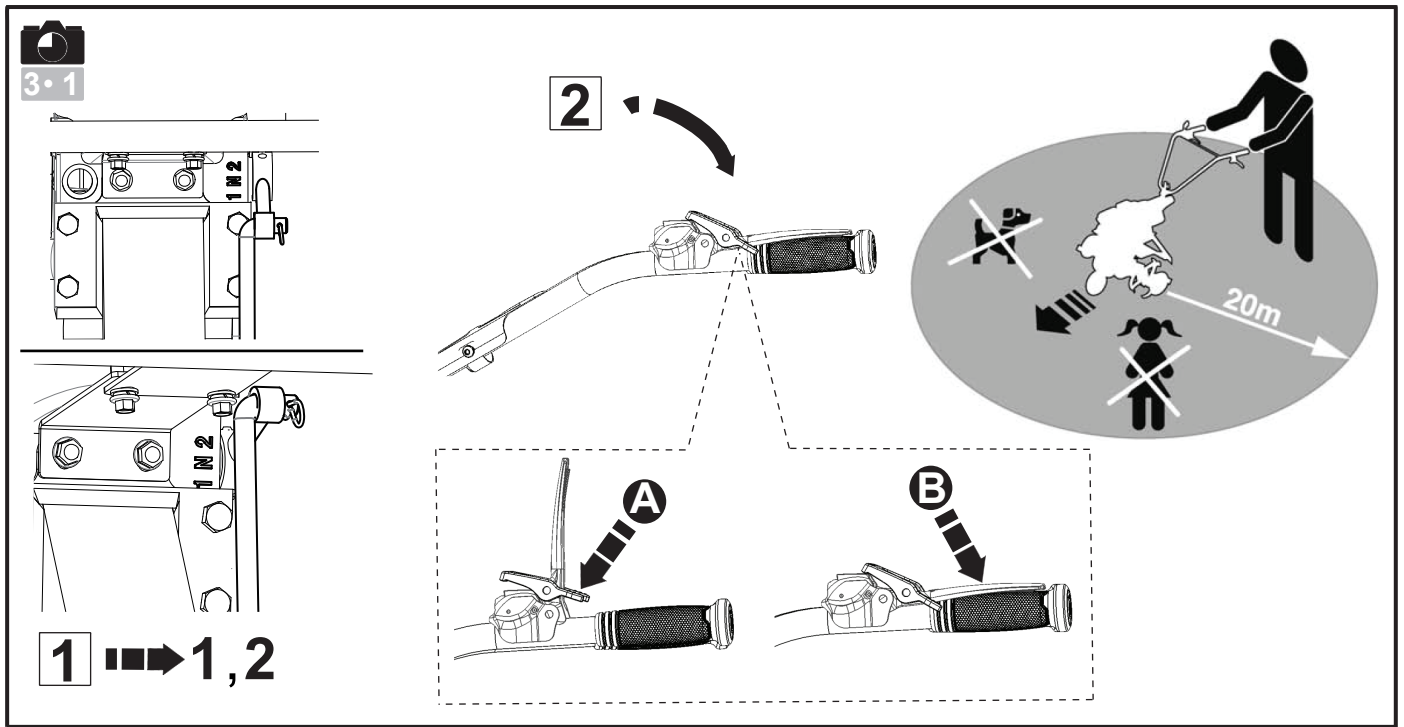
**Husqvarna**® Prod. year

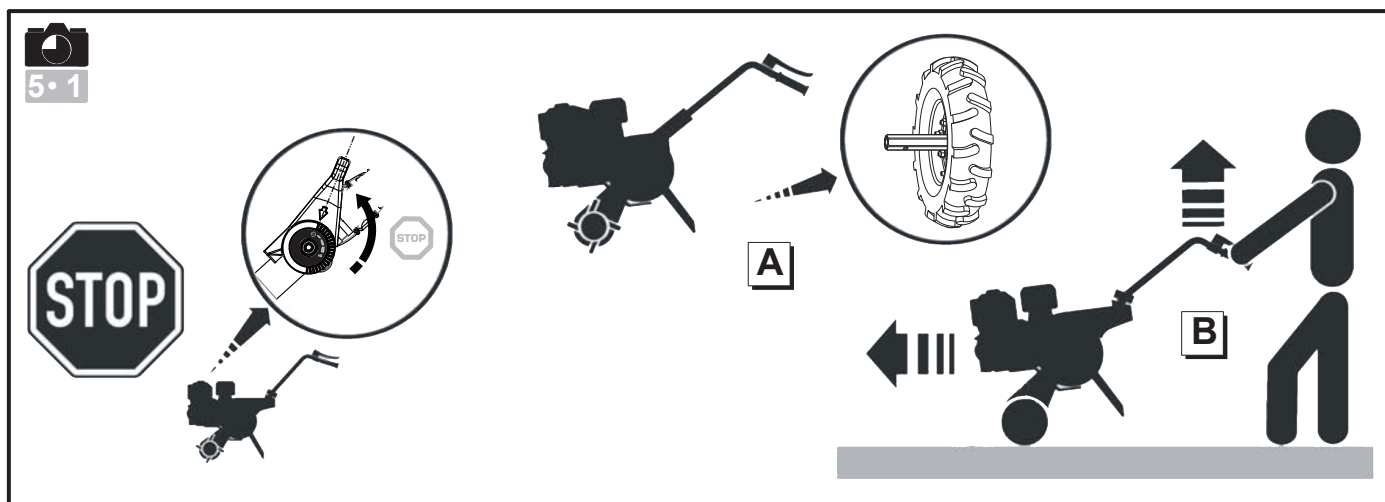
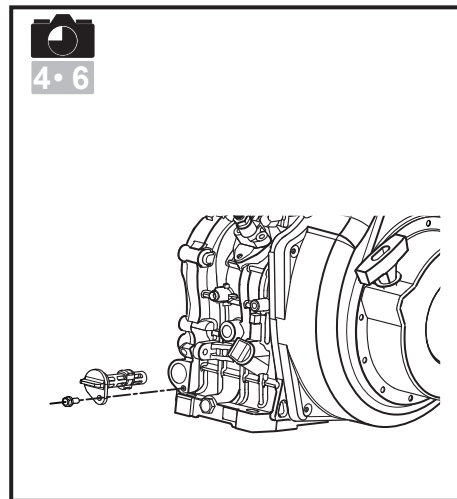
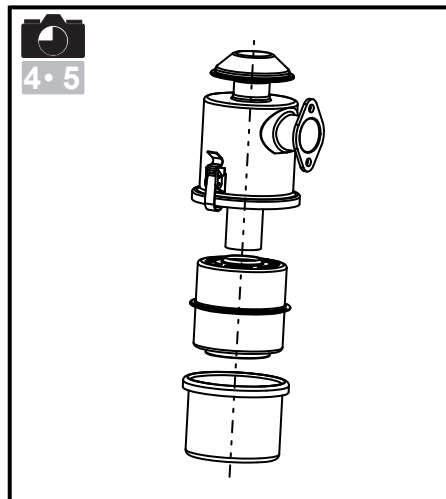
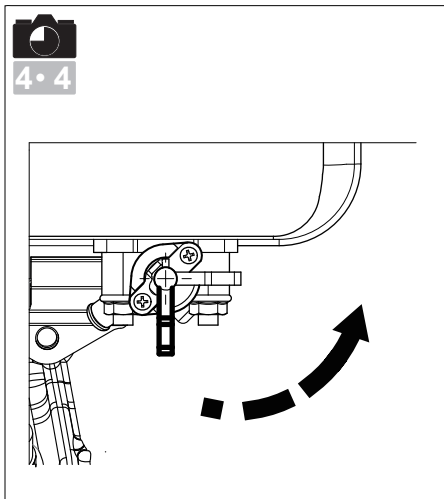
1	Serial No	<input type="text"/>
2	Article no.	<input type="text"/>
3	Model	<input type="text"/>
4	Tilling scope	<input type="text"/>
5	Tilling depth	<input type="text"/>
6	Gear shifting	<input type="text"/>
7	Engine displacement	<input type="text"/>
8	Engine oil quality	<input type="text"/>
9	Engine oil capacity	<input type="text"/>
10	Gear box oil quality	<input type="text"/>
11	Gear box oil capacity	<input type="text"/>
12	Nominal power	<input type="text"/>
13	Net weight	<input type="text"/>
14	Fuel (octan/cetan)	<input type="text"/>

**HUSQVARNA AB**  
**SE-561 82 HUSKVARNA**  
**SWEDEN**









---

# CONTENTS

---

## Contents

### CONTENTS

Contents .....	2
----------------	---

### KEY TO SYMBOLS

Symbols .....	3
Explanation of warning levels .....	3

### SAFETY INSTRUCTIONS

General .....	4
Preparation .....	4
Use .....	4
Maintenance .....	5
Transport and storage .....	5
Fueling .....	5

### ASSEMBLING AND ADJUSTMENTS

Unpacking .....	6
Assembly .....	6
Description of the components .....	6
Type plate .....	6
Transport wheel .....	6

### STARTING AND STOPPING

Before starting .....	7
Start the machine. ....	7
Use .....	7
Forwards .....	7
Reverse .....	7
Stopping .....	7
Moving the machine .....	7

### MAINTENANCE AND SERVICE

Maintenance schedule .....	8
General .....	8

### TECHNICAL DATA

Technical data .....	9
----------------------	---

# KEY TO SYMBOLS

## Symbols

These symbols are on the machine and in the instructions.

**WARNING!** Careless or incorrect use can result in serious or fatal injury to the operator or others.

Please read the operator's manual carefully and make sure you understand the instructions before using the machine.

Use hearing protection to minimise the risk of hearing impairment.

Reverse

Neutral

Fast forward

Slow forward

Fast

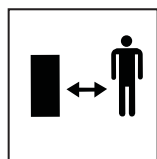
Slow

Warning: rotating parts. Keep hands and feet clear.

Keep your distance!



R  
N  
2  
1



## Explanation of warning levels

The warnings are graded in three levels.

### WARNING!



**WARNING!** Used if there is a risk of serious injury or death for the operator or damage to the surroundings if the instructions in the manual are not followed.

### IMPORTANT!

**IMPORTANT!** Used if there is a risk of injury to the operator or damage to the surroundings if the instructions in the manual are not followed.

### CAUTION!

**CAUTION!** Used if there is a risk of damage to materials or the machine if the instructions in the manual are not followed.

# SAFETY INSTRUCTIONS

## General

- These instructions are for your safety. Read them carefully.
- Read all the instructions in this operator's manual and on the machine before you start it. Ensure you understand them and then observe them.
- If you have any problems or questions about the tiller, please contact your Husqvarna dealer for more information.



**WARNING! Only use the machine for the purpose it is designed for, as tilling the ground or use of approved attachments. Any other use may be dangerous or cause damage to the machine.**

- Learn how to use the machine and its controls safely and learn to how to stop quickly. Also learn to recognize the safety decals.
- The operator is responsible for any unsafe situations or risks that people and property are exposed to.
- Never start to work with the machine before the working area is clear and you have a firm foothold. Look out for any obstacles with unexpected movement. Take great care when working on sloping ground.
- Only allow the machine to be used by adults who are familiar with its use.
- Never allow children or other persons not trained in the use of the machine to use or service it. Local laws may regulate the age of the user.
- Keep unauthorised persons at a distance. Children, animals, onlookers and helpers should be kept outside the safety zone of 20 m. Stop the machine immediately if anyone approaches.
- Never use the machine if you are tired, if you have consumed alcohol, if you are taking other drugs or medication that can affect your vision, judgement or co-ordination.
- Pay particular attention on hard ground.
- The machine has the tendency to be much less stable on cultivated ground.



**WARNING! This machine produces an electromagnetic field during operation. This field may under some circumstances interfere with active or passive medical implants. To reduce the risk of serious or fatal injury, we recommend persons with medical implants to consult their physician and the medical implant manufacturer before operating this machine.**

- Never use the machine when barefoot. Always wear protective shoes or protective boots, preferably with steel toes. Never wear loose-fitting clothing, jewellery or similar that can get caught in moving parts. Use hearing protection to minimise the risk of hearing impairment.

## Preparation

- Inspect the working area. Remove all loose objects, such as stones, broken glass, nails, steel wire, string, etc. that could be projected by the machine.
- Check the entire machine before starting. Replace worn or damaged parts. Check that there are no fuel leaks and that all guards and covers are complete and fastened securely. Check all nuts and screws.
- Check that the electrical wires are intact and in good condition.

## Use

- Never use the machine itself to transport people.
- Compliance with and strict adherence to the conditions of operation, service and repair as specified by the manufacturer also constitute essential elements of the intended use.
- Stop the engine when the machine is not in use.
- Walk with the machine, do not run.
- Pay close attention when pulling the machine towards you or reversing the direction of rotation.
- Keep a safe distance from the rotating blades, set by the length of the steering column. Keep your hands and feet away from the rotating blades.
- The engine and the exhaust system become very hot during operation. Risk of burn injuries if touched.
- Only use the machine in daylight or in other well-lit conditions.
- Do not use the machine on ground that slopes more than 20°.
- Work across slopes, not up or down.



**WARNING! Under no circumstances should you modify the original design of the machine without approval from the manufacturer. Always use original spare parts. Unauthorized modifications and/or accessories may lead to serious injury or death to the user or others.**

**The warranty is not valid if non genuine parts are used.**

Stop the engine immediately if the following occurs:

- Excessive vibration and / or noise.
- Mechanical jam preventing engine or tines from turning.
- Difficulties to engage or disengage the clutch.
- A collision with a foreign object.
- Deterioration of the engine speed cable.

If the engine speed cable is severed, press down the decompression lever and hold by hand or close the fuel tap to stop the engine. For more information see section "Start the engine"

Allow the machine to cool down. Check that the machine is not damaged. If the machine is damaged, hand it in to an authorized service workshop for repair.

# SAFETY INSTRUCTIONS

## Maintenance

- Always stop the engine and close the fuel tap before repair, cleaning, maintenance work or when changing the tools on the machine.
- Regular maintenance is essential for safety and to maintain the levels of performance.
- Wear heavy-duty gloves when changing the tools on the machine.
- Replace the rotating blade in complete sets to keep them balanced. Always use genuine parts.
- Check that nuts and screws are tight.
- Never use a machine that has a faulty muffler. Contact an authorised service workshop.

**IMPORTANT!** For your own safety, do not alter the characteristics of the machine. Do not change the engine speed settings and do not run the engine at excess speed.

## Transport and storage

- Allow the machine to cool before putting it in storage and/or before transport.
- Store the machine and fuel in such a way that there is no risk that leaking fuel or fumes can cause any damage.
- The machine should always be stored in a dry place away from open fire, sparks or intense heat.
- Fuel and fuel vapour are highly flammable. Take care when handling fuel and oil. Bear in mind the risk of fire, explosion and inhaling fumes.
- When storing and transporting fuel always use approved containers intended for this purpose.
- Do not try to lift the machine. Use a method of handling adapted to the weight of the machine and to the situation.
- Take extra care when loading it onto or off a vehicle or trailer. Use a suitable ramp.
- Use an approved trailer to transport the machine. Secure the machine with approved tightening straps. Ensure that no part of the machine are squashed or damaged by the tightening straps. It is a good idea to cover the machine.
- For more information about moving of the machine during work, see section "Moving".

## Fueling

- Always stop the engine and let it cool for a few minutes before refuelling.
- Refuel in a well ventilated area with the engine turned off.



**WARNING! Diesel is highly flammable. Exercise care and refuel outdoors. Fire, open flame and smoking are prohibited.**

**Clean the area around the fuel cap. Tighten the fuel cap carefully after refuelling. If the cap is not properly tightened the cap might vibrate loose and fuel may escape from the fuel tank creating a fire hazard. Move the machine at least 3 m from the refuelling point before starting it.**

- Bear in mind the risk of fire, explosion and inhaling fumes. Do not fill so that the fuel runs over. Wipe up all spillage on the ground and machine. If you spill fuel on yourself or your clothes. Change your clothes. Move the machine at least 3 metres away from the refuelling area before starting.
- The engine emits carbon monoxide, which is a colourless, poisonous gas. Do not use the machine in enclosed spaces.

# ASSEMBLING AND ADJUSTMENTS

## Unpacking

### Illustration: 1 • 1

**IMPORTANT!** Make sure to not cut the cables/wires or scratch the machine when cutting the edges of the case.

References	Content of the case
A	Engine parts
B	Sub holder 1
C	Holder main comp
D	Lower tidy cover
E	Drag bar
F	Tine cover
G	Tine cover bracket FR
H	Lever shifting
I	Blades
J	Wheel
K	Connector joint
L	Extionsion cover
M	Side cover
N	Locking handle
O	Tine cover bracket RR
P	Rubber cable holder
Q	Sub holder 2
R	Connecting plate
S	Hardware bag tines only
T	Hardware bag
W	Tool bag

## Assembly

### Illustration: 1 • 2



**WARNING! Inappropriate assembly of this rotary tiller could cause severe injuries. Ensure that you follow all the instructions carefully.**

- Fitting the tine blades. Illustrations only shows assembly of the tine blades on the right side. Make sure that the sharp edges face one side on both right and left side tines. Please pay attention to distinguish the two Sub holders. **(Figure 1 - 7)**
- Fitting the connecting joint. **(Figure 8)**
- Fitting the drag bar. **(Figure 9)**
- Fitting the handle bar. **(Figure 10)**
- Adjust the hight of the handle and tighten the knobs securely. **(Figure 11 - 12)**
- Fitting the clutch control. **(Figure 13)**
  - Turn to proper side and fasten the bolt.
- Fitting the lower tidy cover. **(Figure 14 - 15)**
  - Tidy the cables.
  - Fit the rubber holder properly.
  - Fit the cover and fasten with bolt.

- Fitting the tine cover. **(Figure 16 - 20)**
  - Do not tighten the bolt immediately after installed.
  - Install all 4 bolts and nuts first, then tighten one by one.
- Fitting the shifting lever. **(Figure 21)**

Any dismantling operation must only be performed by an authorized service workshop.

**CAUTION!** After assembling the machine completely, tighten the bolts and screws with modertion. Do not overtighten.

## Description of the components

### Illustration: 1 • 3

- 1 Engine
- 2 Tine cover
- 3 Handle
- 4 Extension cover
- 5 Blades
- 6 Drag bar
- 7 Upper tidy cover
- 8 Lever shifting
- 9 Bumper
- 10 Clutch control
- 11 Throttle control
- 12 Reverse control
- 13 Side cover
- 14 Lower tidy cover

## Type plate

### Illustration: 1 • 4

- 1 Serial number
- 2 Article number
- 3 Model
- 4 Tilling scope
- 5 Tilling depth, mm
- 6 Gear shifting
- 7 Engine displacement
- 8 Engine oil Quality (viscosity):
- 9 Engine oil capacity
- 10 Gear box oil, quality
- 11 Gear box oil capacity
- 12 Nominal power
- 13 Net weight, kg
- 14 Fuel

## Transport wheel

### Illustration: 1 • 5

Change the tines to wheels when transporting.

For more information about moving of the machine, see section "Moving".

# STARTING AND STOPPING

## Before starting

- Check the engine oil level and top up if necessary. Illustration: 2 • 1
- Check the oil level of the gear box, and top up if necessary. Illustration: 2 • 2
- Check the fuel level. Fill if necessary. Illustration: 2 • 3
  - Fuel: Diesel fuel
- Oiling the air filter cup. Illustration: 2 • 4

## Start the machine.

- Put the gear shift lever in the "N" position (neutral). Illustration: 2 • 5

N

- Throttle control Illustration: 2 • 6
  - Push the throttle control to full throttle position.



- Open the fuel tap. Illustration: 2 • 7
- Start the engine Illustration: 2 • 8
  - Press down the decompression lever and hold by hand.
  - Grip the starter handle, slowly pull out the cord with your hand until you feel some resistance (the starter pawls grip), then return slowly.
  - Repeat the procedure three times.
  - Press down and release the decompression lever.
  - Quickly and powerfully pull the cord. Use two hands if necessary.



**WARNING! Never twist the starter cord around your hand.**

## Use



**WARNING! Keep unauthorised persons at a distance. Children, animals, onlookers and helpers should be kept outside the safety zone of 20 m. Stop the machine immediately if anyone approaches.**

## Forwards

### Illustration: 3 • 1

- Use the shifting lever to control the drive speed.

Slow

1

Fast

2

- Press down the trigger lock on the handle (A) and push the clutch lever in towards the handle (B).
- The cultivator starts to rotate when you push the clutch lever down towards the handle and stops rotating when you release the clutch lever.

## Reverse

### Illustration: 3 • 2

**IMPORTANT!** The cultivator starts to rotate when you push the clutch lever down towards the handle and stops rotating when you release the clutch lever. It is important to release the clutch lever before using reverse.

- Put the gear shift lever in the "N" position (neutral).

N

- Slide the control to "R" position.

R



**WARNING! The use of reverse is dangerous! Ensure that there are no obstacles behind you and reduce the engine revs before engaging the clutch.**

- Press down the trigger lock on the handle (A) and push the clutch lever in towards the handle (B).

## Stopping

- Release the clutch lever. Illustration: 4 • 1
- Put the gear shift lever in the "N" position (neutral). Illustration: 4 • 2

N

- Reduce the throttle and stop the engine. Illustration: 4 • 3



- Close the fuel tap. Illustration: 4 • 4

## Moving the machine

### Illustration: 5 • 1

- The engine must be switched off before moving. See instructions under section Stopping.
- Change the tines to wheels when transporting. **(Figure A)**
- Lift the drag bar from the ground using the handlebar and then advance forwards. **(Figure B)**

# MAINTENANCE AND SERVICE

## Maintenance schedule

The following is a list of the maintenance steps that must be performed on the machine.

Maintenance	Illustration	Daily maintenance before starting	Maintenance interval in hours			
			20 hours or every month	150 hours or evry 3 months	500 hour or evry 6 months	1000 hours or once a year
Clean the machine.		X				
Check that nuts and screws are tight and without damage.		X				
Clean the air filter. Replace if necessary.	4 • 5	X		X*	X*	X*
Check the engine's oil level	2 • 1, 2 • 2, 2 • 4	X				
Check the oil level of the gear box, and top up if necessary.	2 • 2	X				
Check for any leakage of fuel, engine oil and lubrication.		X				
Check the fuel level. Fill if necessary.	2 • 3	X				
If the machine starts to vibrate abnormally, immediately check.		X				
Change the oil and lubrication of the engine and the gearbox.			X	X		
Clean the oil filter	4 • 6		X	X	X	X
Clean the fuel filter and its surrounding components.				X	X	X
Change the gears and bearings						X**

\* Clean more often in condition of use where the air is dusty or laden with aerial debris.

\*\* Not essential except in the event of performance problems. Contact an authorised service workshop.



**WARNING! Remove the foam plastic filter. Wash the filter well in tepid soapy water. After cleaning, rinse the filter well in clean water. Squeeze out and allow the filter to dry. NOTE! High pressure compressed air can damage the foam. Do not use compressed air or solvent with petroleum to clean the air filter.**

## General



**WARNING! Before carrying out repair work, cleaning or inspection, the machine must be in standstill and turned off.**

**Never make adjustments with the machine running.**

Always use genuine parts.

- Never wear jewellery, watches or similar when cleaning, carrying out repair work on or inspecting the machine.

Do not modify safety equipment. Check regularly to be sure it works properly.

Always exercise care and use your common sense. Avoid all situations which you consider to be beyond your capability. If you still feel uncertain about operating procedures after reading these instructions, you should consult an expert before continuing. Contact an authorised service workshop.

---

# TECHNICAL DATA

---

## Technical data

	<b>TF544</b>
Tilling width, mm	1350
Tilling depth, mm	150 - 300
Engine	WM186F
Fuel	Diesel fuel
Fuel tank capacity, liters	5,5
Oil tank capacity, litre	1,65
Cylinder displacement, cm <sup>3</sup>	418
Max power hp (kW) @ rpm	9 (6,6) @3600
Gears	R, N, 2, 1
Oil capacity gearbox, liters	1,65
Gross weight, kg	172
Net weight, kg	151
Packaging size, mm	1030x640x870

**IMPORTANT!** When the service life of this product has been served and it is no longer used it should be returned to the dealer or to an applicable station for recycling.

**IMPORTANT!** We reserve the right to change specifications and designs without prior notice so as to implement improvements. Note that no legal claims are valid on the basis of information in this manual. Use only genuine parts for repairs. The warranty is not valid if non genuine parts are used.





**Original instructions**

**1157497-26**



**2015-03-04**