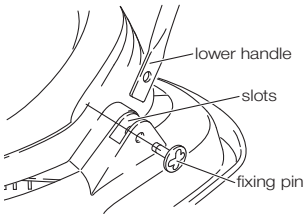
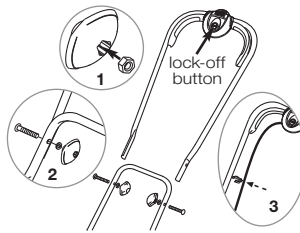
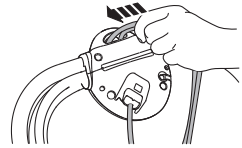
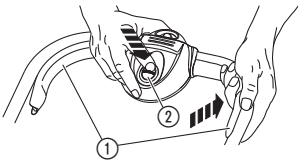
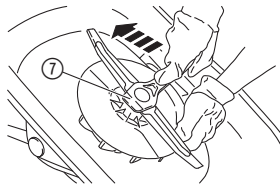
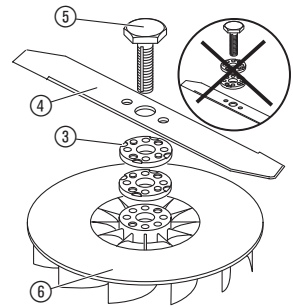
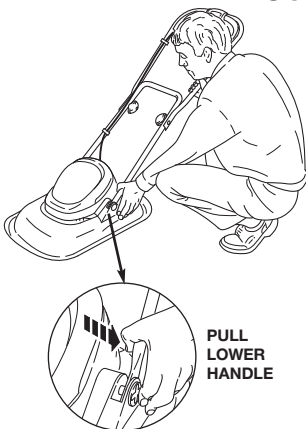
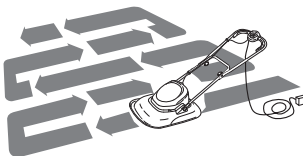
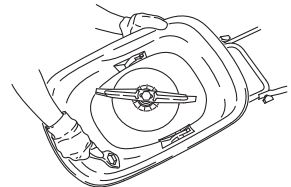


Turbo Lite 350  
Turbo 400

Art. 9679585  
Art. 9634100

**EN Operator's manual**  
Electric Lawnmower

---

**A1****A2****O1****O2****O3****O4****O5****O6****M1**

# Flymo Electric Lawnmower Turbo Lite 350/Turbo 400

1. SAFETY.....	3
2. ASSEMBLY.....	5
3. OPERATION.....	6
4. MAINTENANCE.....	7
5. STORAGE.....	7
6. TROUBLESHOOTING.....	7
7. TECHNICAL DATA.....	8
8. ACCESSORIES.....	9
9. SERVICE/WARRANTY.....	9

disabilities or a lack of experience and knowledge. Children must not be allowed to play with the product. Cleaning and user maintenance must not be performed by children without supervision. The use of this product by young people under the age of 16 is not recommended.

## Original instructions.



This product may be used under supervision, or if instruction regarding the safe use of the product has been provided and the resulting dangers have been understood, by children aged 8 and above, as well as by persons with physical, sensory or mental

### Intended use:

The **Flymo Electric Lawnmower** is intended to cut lawn in private domestic gardens and allotments. The product is not intended for long term use.

**DANGER! Risk of injury! Do not use the product to cut bushes, hedges, shrubs, to cut off climbers or grass on roofs or balcony boxes, to chop up branches, twigs and to level irregularities in the soil. Do not use the product on a slope steeper than 20° maximum.**

## 1. SAFETY

### IMPORTANT!

Read the operator's manual carefully before use and keep for future reference.

### Symbols on the product:



Read operator's manual.



Keep other persons away.



Beware of sharp blades. Blades continue to rotate after the engine is switched off. Disconnect the mains cable before you do maintenance or if the cable becomes damaged or cut.



Keep the mains cable away from the cutting blades.

### General safety warnings

#### Electrical safety



**DANGER! Electric shock!**  
Risk of injury due to electric shock.

→ The product must be supplied through a residual current device (RCD) having a rated residual operating current not exceeding 30 mA.



**DANGER! Risk of physical injury!**  
Cut injury when the blade turns or the product starts accidentally.

→ Disconnect the product from the mains before you do maintenance or you replace parts. Thereby the disconnected socket must be in the visual range.

### Cables

If extension cables are used, these must comply with the minimum cross-sections in the table below:

Voltage	Cable length	Cross section
230 – 240 V / 50 Hz	Up to 40 m	1.0 mm <sup>2</sup>
230 – 240 V / 50 Hz	Up to 60 m	1.5 mm <sup>2</sup>
230 – 240 V / 50 Hz	Up to 100 m	2.5 mm <sup>2</sup>

Minimum rating: 1.0 mm<sup>2</sup> size cable, 10 amps 250 volts AC.

Your product is supplied with cable wired directly into the product.

1. If the supply cord is damaged, it must be replaced by your local Husqvarna UK Ltd. Approved Service Centre or similarly qualified persons in order to avoid a hazard.
2. Flymo Extension Cables are available from your local Husqvarna UK Ltd. Approved Service Centre.
3. Do not wire an extension cable directly to your product yourself. Please contact your local Husqvarna UK Ltd. Approved Service Centre for further information on the connectors and kits available.

4. Only use extension cables specifically designed for outdoor use and which conform to one of the following specifications: Ordinary rubber (60245 IEC 53), Ordinary PVC (60227 IEC 53) or Ordinary PCP (60245 IEC 57).

### Connectors – Important

- Flymo connectors are suitable for use with 2 core cable only. Under no circumstances should these connectors be used for earthed products.
- All Flymo connectors and cables are of splashproof construction. They are not waterproof and must not be left outside permanently nor should they be submerged or immersed in water. Do not let cable lay or trail through pools of water or splashed with water from hose pipes.

### Mains plug replacement – Important

- If the plug supplied is cut off it should be destroyed. There is an electric shock hazard if a cut off plug is inserted into a 13 amp socket.
1. No earth required. Flymo products are double insulated to EN 60335 and under no circumstances should an earth be connected to any part of the product.
  2. Ensure the mains voltage suits your product.
  3. Important! The wires in the mains lead are coloured in accordance with the following code: BLUE – NEUTRAL; BROWN – LIVE. The wire which is coloured BLUE must be connected to the Terminal which is marked with the letter 'N' or coloured BLACK. The wire which is coloured BROWN must be connected to the Terminal which is marked with the letter 'L' or coloured RED.
  4. It is important that the outer sheath is clamped correctly into the 3-pin plug.
  5. If in doubt consult your local Service Repairer or qualified electrician before the machine is used.
  6. A 13 Amp fuse must be fitted to the mains plug.
  7. The normal plug fuse and household fuse only protect the electrical equipment and are not a safeguard against electrocution.

### Training

1. Read the instructions carefully. Be familiar with the controls and the correct use of the machine.
2. Never allow children or people unfamiliar with these instructions to use the machine. Local regulations can restrict the age of the operator.
3. Never operate the machine while people, especially children, or pets are nearby.
4. Keep in mind that the operator or user is responsible for accidents or hazards occurring to other people or their property.

### Preparation

1. While operating the machine always wear substantial footwear and long trousers. Do not operate the machine when barefoot or wearing open sandals. Avoid wearing clothing that is loose fitting or that has hanging cords or ties.
2. Thoroughly inspect the area where the machine is to be used and remove all objects which can be thrown by the machine.

3. Before using, always visually inspect to see that the blade, blade bolt and the blade assembly are not worn or damaged. Replace worn or damaged components in set to preserve balance. Replace damaged or unreadable labels.
4. Before use check the supply and extension cord for signs of damage or aging. If the cord becomes damaged during use, disconnect the cord from the supply immediately. **DO NOT TOUCH THE CORD BEFORE DISCONNECTING THE SUPPLY.** Do not use the machine if the cord is damaged or worn.

### Operation

1. Operate the machine only in daylight or in good artificial light.
  2. Avoid operating the machine in wet grass.
  3. Always be sure of your footing on slopes.
  4. Walk, never run.
  5. Mow across the face of slopes, never up and down.
  6. Exercise extreme caution when changing direction on slopes.
  7. Do not mow excessively steep slopes.
  8. Use extreme caution when reversing or pulling the machine towards you.
  9. Stop the blade(s) if the machine has to be tilted for transportation when crossing surfaces other than grass, and when transporting the machine to and from area to be used.
  10. Never operate the machine with defective guards or shields, or without safety devices, for example deflectors and/or grass collector, in place.
  11. Switch on the motor carefully according to instructions and with feet well away from the blade(s).
  12. Do not tilt the machine when switching on the motor, except if the machine has to be tilted for starting. In this case, do not tilt it more than absolutely necessary and lift only the part, which is away from the operator.
  13. Do not start the machine when standing in front of the discharge opening.
  14. Do not put hands or feet near or under rotating parts. Keep clear of the discharge opening at all times.
  15. Do not transport the machine while the power source is running.
  16. Stop the machine, and remove the plug from the socket. Make sure that all moving parts have come to a complete stop
    - whenever you leave the machine,
    - before clearing blockages or unclogging chute,
    - before checking, cleaning or working on the machine,
    - after striking a foreign object. Inspect the machine for damage and make repairs before restarting and operating the machine;
- if the machine starts to vibrate abnormally (check immediately)
- inspect for damage,
  - replace or repair any damaged parts,
  - check for and tighten any loose parts.

### Maintenance and storage

1. Keep all nuts, bolts, and screws tight to be sure the machine is in safe working condition.
2. Check the grass collector frequently for wear or deterioration.
3. On machines with multi blade, take care as rotating one blade can cause other blades rotate.
4. Be careful during adjustment of the machine to prevent entrapment of the fingers between moving blades and fixed parts of the machine.
5. Always allow the machine to cool down before storing.
6. When servicing the blades be aware that, even though the power source is switched off, the blades can still be moved.
7. Replace worn or damaged parts for safety. Use only genuine replacement parts and accessories.

### Additional safety warnings

#### Electrical safety



#### **DANGER! Cardiac arrest!**

**This product makes an electromagnetic field while it operates. This field may under some conditions interfere with active or passive medical implants. To decrease the risk of conditions that can possibly injure or kill, we recommend persons with medical implants to speak with their physician and the medical implant manufacturer before you operate the product.**

Before use, examine the cable for signs of damage or ageing. If the cable is found to be defective, take the product to an Authorised Service Centre and have the cable replaced.

Do not use the product if the electric cables are damaged or worn.

Immediately disconnect from the mains if the cable is cut, or the insulation is damaged. Do not touch the electric cable until the cable has been disconnected. Do not repair a cut or damaged cable. Replace it with a new one.

The extension cable must be uncoiled. Coiled cables can overheat and reduce the efficiency of your mower.

Keep the extension cable away from product, always work away from the power point mowing up and down, never in circles.

Do not pull cable around sharp objects.

Always switch off at the mains before disconnecting any plug, cable connector or extension cable.

Stop the engine, disconnect the mains and examine the cable for damage or ageing before you wind the cable for storage. Do not repair a damaged cable, replace it with a new one. Use only genuine replacement cable.

Always wind the cable carefully, avoid kinking.

Do not carry the product by the cable.

Do not pull on the cable to disconnect any of the plugs.

Use only on AC mains supply voltage shown on the product rating label.

Our products are double insulated to EN 60335.

Do not connect an earth to any part of the product.

Check the working area for hidden cables.

Do not use for pond care or close to water.

#### Personal safety



#### **DANGER! Risk of suffocation!**

**Small parts can be easily swallowed. There is also a risk that the polybag can suffocate toddlers. Keep toddlers away when you assemble the product.**

Do not use in explosive atmosphere.

Do not operate the product when you are tired, ill or under the influence of alcohol, drugs or medicine or when you are exhausted.

Do not overload the mower.

Use gloves, wear slip resistant shoes and wear eye protection.

Do not use under wet conditions.

Do not use on wet grass.

Do not disassemble the product further than the delivery status.

Only start the mower with an upright standing handle.

Do not use the start levers alternately.

Use the handles carefully.

#### Safety Cut-Out

The engine is protected by a Safety Cut-Out which is activated when the blade becomes jammed or if the engine is overloaded. When this occurs, stop and disconnect the product from the mains. The Safety Cut-Out will only reset when you release the start/stop lever. Clear any obstruction and wait for a few minutes for the Safety Cut-Out to reset before you continue to use the product.

## 2. ASSEMBLY



#### **DANGER! Risk of physical injury!**

**Cut injury when the blade turns or the product starts accidentally.**

→ **Wait for the blade to stop, disconnect the product from the mains and use gloves before you do assembly.**

#### **To assemble the lower handle [Fig. A1]:**

1. Place the end of the lower handle into the slots.
2. Secure the lower handles to hood by firmly pushing fixing pin through the holes in hood and handle.
3. Repeat on the other side.

**NOTE:** Should a problem occur when securing the handle to hood with the fixing pin, carefully lever fixing pin out of location and repeat steps **1** to **3** above.

### To assemble the upper handle [Fig. A2]:

1. Ensure the upper handle is located correctly with the lock-off button on the switchbox uppermost.
2. Ensure the upper handle and the lower handle are aligned correctly.

3. Insert the nut into the handle knob **1**.
4. Fit the bolts, washers and handle knobs **2**.
5. Fit the cable to the handles with the clips provided. Make sure the cable is not trapped between the upper and lower handles **3**.

## 3. OPERATION



### **DANGER! Risk of physical injury!**

**Cut injury when the blade turns or the product starts accidentally.**

- **Wait for the blade to stop, disconnect the product from the mains and use gloves before you connect or adjust the product.**

### To connect the Mower [Fig. O1]:



### **WARNING! Risk of electric shock!**

**To avoid damage to the mains cable, the mains cable must be inserted into the cable lock.**

- **Before you operate insert the mains cable into the cable lock.**

1. Loop the mains cable, insert the loop into the cable lock and pull tight.
2. Connect the mains cable into a 230 V mains socket.

### To start the Mower [Fig. O2]:



### **DANGER! Risk of physical injury!**

**Risk of injury if the product does not stop when you release the start lever.**

- **Do not bypass the safety devices or switches. For example do not attach the start lever ① to the handle.**

### To start:

**The product is fitted with a two-handed safety device (start lever ① with safety interlock ②) to prevent the product from being turned on by accident.**

There are two start levers ① fitted. Either one have to be used to start.

1. Connect the mains cable into a 230 V mains socket.
2. Push the safety interlock ② with one hand and pull the start lever ① with the other hand.
3. Release the safety interlock ②.  
*The product will start.*

### To stop:

- Release the start lever ①.

### To adjust the cutting height [Fig. O3/O4]:



### **CAUTION!**

**Do not use more than 4 cutting height spacers ③. The cutting height spacers ③ must only be fitted between the blade and the fan. Do not fit the cutting height spacers ③ between the blade ④ and the blade bolt ⑤.**

1. Hold the fan ⑥ firmly and loosen the blade bolt ⑤ with the spanner ⑦ provided.
2. Remove the blade bolt ⑤, the blade ④, the cutting height spacers ③ and the fan ⑥.
3. Inspect for damage and clean as necessary.
4. Put the fan ⑥ on the product.  
*Make sure that the fan ⑥ is fully in place and the hole of the fan is inline up with the threaded hole.*
5. Put the cutting height spacers ③ onto the fan ⑥.  
**Higher Cut – less cutting height spacers**  
**Lower Cut – more cutting height spacers**  
*Make sure that the pegs have located into the holes.*
6. Put the blade ④ onto the cutting height spacers ③.  
*Make sure that the pegs have located into the holes on the blade.*
7. Put the blade bolt ⑤ through the centre hole of the blade.
8. Tighten down the blade bolt ⑤ clockwise by hand.
9. Hold the fan ⑥ firmly and tighten the blade bolt ⑤ with the spanner ⑦ provided.

### To adjust the handle position [Fig. O5]:

**NOTE:** Removal of the lower handle fixing pins is not required to adjust the handle.

1. Hold the handle as illustrated.
2. Take the weight of the handle with your right hand.
3. Then grip the lower part of the handle with your left hand and pull the lower handle towards you with your left hand.
4. Move to forward or down position as required.

### **Handle in forward position:**

Push handle forward until it stops.

### **Handle in down position:**

Move handle downward until it stops.

**NOTE:** The handle does not rest flat on the ground.

### Handle in operating position:

Adjustment is not required to move the handle to the operating position. Simply pull down from the forward position or lift up from the down position until the handle is in the most comfortable operating position.

### Tips to use the Mower [Fig. O6]:

1. Mow twice a week during the growing season.  
*The lawn will suffer if more than a third of its length is cut at one time.*
2. For the best results mow the outside edge of the lawn in a clockwise direction first.

3. Start to mow the edge of the lawn nearest to the power point.  
*So the cable is laid out on the lawn you have already cut.*
4. For the best cutting results mow in straight lines with an overlap of approximately 8 – 10 cm on each pass with the mower.
5. Do not overload the mower. To mow long thick grass may cause the motor speed to drop and you will hear a change in the motor sound. If the motor speed drops you may overload the mower which may cause damage. When you mow in long thick grass a first cut with the cutting height set higher will help reduce the load. See "To adjust the cutting height".

## 4. MAINTENANCE



### DANGER! Risk of physical injury!

Cut injury when the blade turns or the product starts accidentally.

- Wait for the blade to stop, disconnect the product from the mains and use gloves before you do maintenance.

### To clean the underside of the Mower [Fig. M1]:



### DANGER! Electric shock!

Risk of injury and risk of damage to the product.

- Do not clean the product with water or with a water jet (in particular high-pressure water jet).

The underside is easiest to clean after you mowed.

1. Lay the product on its side carefully.
2. Clean the underside, the blade ④, the fan ⑥ and the airflow slots with a brush (do not use sharp objects).

### To clean the overside of the Mower:

Do not clean with chemicals including petrol or solvents.

1. Clean the overside with a damp cloth.
2. Clean the air intakes with a soft brush (do not use sharp objects).

## 5. STORAGE

### To put into storage:

The product must be stored away from children.

1. Disconnect the product from the mains.
2. Clean the product (see 4. MAINTENANCE).
3. Store the product in a dry, enclosed and frost-free place.

### To fold the handle [Fig. O6]:

The handle can be folded to take up the minimum of space.

- See "To adjust the handle position".

### Disposal:

(in accordance with RL2012/19/EC)

The product must not be added to normal household waste. It must be disposed of in line with local environmental regulations.

- **IMPORTANT!** Make sure that the product is discarded through or via your municipal recycling collection centre.



## 6. TROUBLESHOOTING



### DANGER! Risk of physical injury!

Cut injury when the blade turns or the product starts accidentally.

- Wait for the blade to stop, disconnect the product from the mains and use gloves before you do troubleshooting.

### To replace the blade [Fig. O4/O5]:



### DANGER! Risk of physical injury!

Cut injury when the blade turns and it is damaged, bent, out of balance or has chipped edges.

- Do not use the product when the blade is damaged, bent, out of balance or has chipped edges.  
→ Do not regrind the blade.

The Flymo spare parts are available from your Flymo dealer or from the Flymo service. → Replace the blade (see 3. OPERATION "To adjust the cutting height").

Only use an original Flymo blade:

**Flymo Replacement Blade for TL350:**  
reference no. FLY008. Part no. 512733490.

**Flymo Replacement Blade for TL400:**  
reference no. FLY048. Part no. 511864790.

Problem	Possible Cause	Remedy
<b>Mower does not start</b>	Mains cable is disconnected or damaged.	→ Connect the mains cable or if necessary replace it.
	Blade is blocked.	→ Remove the obstacle.
<b>Engine is jammed and makes a noise</b>	Blade is blocked.	→ Remove the obstacle.
	Cutting height is too low.	→ Raise the cutting height.
<b>Loud noises, the mower is rattling</b>	Screws on engine, its fixing or on the mower housing are loose.	→ Have screws tightened by an authorized specialist dealer or the Flymo Service.
<b>Mower runs unevenly or vibrates strongly</b>	Blade is damaged or the blade mounting is released.	→ Replace the blade.
	Blade is very dirty.	→ Clean the mower (see 4. MAINTENANCE). If this does not rectify the problem, replace the blade.
<b>Lawn is not cleanly cut</b>	Blade is blunt or damaged.	→ Replace the blade.
	Cutting height is too low.	→ Raise the cutting height.



**NOTE: For any other malfunctions please contact the Husqvarna UK Ltd. Customer Service. Repairs must only be done by Husqvarna UK Ltd. service departments or specialist dealers approved by Flymo.**

## 7. TECHNICAL DATA

<i>Electric Lawnmower</i>	Unit	Value (TL350)	Value (TL400)
<b>Rated Power</b>	W	1400	1500
<b>Mains voltage</b>	V	230	230
<b>Mains frequency</b>	Hz	50	50
<b>Speed of rotation cutting blade</b>	R/min.	4100	4100
<b>Cutting width</b>	cm	35	40
<b>Cutting height adjustment</b>	mm	15 – 41	15 – 41
<b>Weight</b>	kg	7.5	7.5
<b>Sound pressure level <math>L_{pA}^{1)}</math></b>	dB (A)	83	82
<b>Uncertainty <math>k_{pA}</math></b>		1.5	1.5
<b>Sound power level <math>L_{WA}^{2)}</math>: measured/guaranteed</b>	dB (A)	93 / 96	92 / 96
<b>Uncertainty <math>k_{WA}</math></b>		1	1



<i>Electric Lawnmower</i>	Unit	Value (TL350)	Value (TL400)
Hand/ arm vibration $a_{vhw}$ <sup>1)</sup>	m/s <sup>2</sup>	1.7	1.4
Uncertainty $k_{vhw}$		0.1	1.5

Measuring process complying with: <sup>1)</sup> EN 60335-2-77 <sup>2)</sup> RL 2000/14/EC



**NOTE: The stated vibration emission value has been measured according to a standardized test procedure and can be used for comparison of one electric power tool with another. It can also be used for preliminary evaluation of exposure. The vibration emission value can vary during actual use of the electric power tool.**

## 8. ACCESSORIES

<b>Flymo Replacement Blade for TL350</b>	As replacement for blunt blade.	<b>Reference no. FLY008. Part no. 512733490</b>
<b>Flymo Replacement Blade for TL400</b>	As replacement for blunt blade.	<b>Reference no. FLY048. Part no. 511864790</b>

## 9. SERVICE/WARRANTY

### **Warranty:**

Husqvarna provides a manufacturer's replacement warranty against faulty workmanship in manufacture and/or defective components to the initial purchaser for each new Flymo branded product produced by Husqvarna and purchased in Australia or New Zealand. To make a valid claim under this manufacturer's warranty the product and proof of purchase must be provided to the retailer. This warranty does not cover damage caused by misuse, neglect, adjustments and/or modifications by the consumer or normal wear and tear, the costs of shipping and handling, travel expense, lost time, or pickup and delivery.

**Australia:** Our goods come with guarantees that cannot be excluded under the Australian Consumer Law. You are entitled to a replacement or refund for a major failure and for compensation for any other reasonably foreseeable

loss or damage. You are also entitled to have the goods repaired or replaced if the goods fail to be of acceptable quality and the failure does not amount to a major failure. Husqvarna Australia Pty Ltd (ABN 45 115 475 619) 4 Pioneer Avenue, Tuggerah NSW 2259. Tel: 1300 804 213.

**New Zealand:** This manufacturer's warranty is in addition to the rights and remedies provided by the New Zealand Consumer Guarantees Act. Husqvarna New Zealand Ltd (Company No. 111861) 51 Aintree Avenue, Airport Oaks, Manukau 2022. Tel: 09 920 2410.

### **Consumables:**

The blade is a consumable and is not included in the warranty.

**Deutschland / Germany**  
GARDENA Manufacturing GmbH  
Central Service  
Hans-Lorenser-Straße 40  
D-89079 Ulm  
Produktfragen:  
(+49) 731 490-123  
Reparaturen:  
(+49) 731 490-290  
service-flymo@gardena.com

**Albania**  
COBALT Sh.p.k.  
Rr. Siri Kodra  
1000 Tirana

**Argentina**  
Husqvarna Argentina S.A.  
Av.del Libertador 5954 S -  
Piso 11 – Torre B  
(C1428ARP) Buenos Aires  
Phone: (+54) 11 5194 5000  
info.gardena@ar.husqvarna.com

**Armenia**  
Garden Land Ltd.  
61 Tigran Mets  
0005 Yerevan

**Australia**  
Husqvarna Australia Pty. Ltd.  
Locked Bag 5  
Central Coast BC  
NSW 2252  
Phone: (+61) (0) 2 4352 7400  
customer.service@  
husqvarna.com.au

**Austria / Österreich**  
Husqvarna Austria GmbH  
Industriezeile 36  
4010 Linz  
Tel.: (+43) 732 77 01 01-485  
service.gardena@  
husqvarnagroup.com

**Azerbaijan**  
Firm Progress  
a. Aliyev Str. 26A  
1052 Baku

**Belgium**  
Husqvarna België nv/na  
Gardena Division  
Rue Egide Van Opheim 111  
1180 Uccle/Ukkel  
Tel.: (+32) 2 720 92 12  
Mail: info@gardena.be

**Bosnia / Hercegovina**  
SILK TRADE d.o.o.  
Industrijska zona Bukva bb  
74260 Tešanj

**Brazil**  
Husqvarna do Brasil Ltda  
Av. Francisco Matarazzo,  
1400 – 19<sup>a</sup> andar  
São Paulo – SP  
CEP: 05001-903  
Tel: 0800-112252  
marketing.br.husqvarna@  
husqvarna.com.br

**Bulgaria**  
AGROLAND България АД  
бул. 8 Декември, № 13  
Офис 5  
1700 Студентски град  
София  
Tel.: (+359) 24666910  
info@agroland.eu

**Canada / USA**  
GARDENA Canada Ltd.  
100 Summerlea Road  
Brampton, Ontario L6T 4X3  
Phone: (+1) 905 792 93 30  
info@gardenacanada.com

**Chile**  
Maquinarias Agroforestales  
Ltda. (Maga Ltda.)  
Santiago, Chile  
Avda. Chesterton  
# 8355 comuna Las Condes  
Phone: (+56) 2 202 4417  
Dalton@maga.cl  
Zipcode: 7560330

**China**  
Husqvarna (China) Machinery  
Manufacturing Co., Ltd.  
No. 1355, Jia Xin Rd.,  
Ma Lu Zhen, Jia Ding Dist.,  
Shanghai  
201801  
Phone: (+86) 21 59159629  
Domestic Sales  
www.gardena.com.cn

**Colombia**  
Husqvarna Colombia S.A.  
Calle 18 No. 68 D-31, zona  
Industrial de Montevideo  
Bogotá, Cundinamarca  
Tel. 571 2922200 ext. 105  
jairo.salazar@husqvarna.com.co

**Costa Rica**  
Compania Exim  
Euroberoamericana S.A.  
Los Colegios, Moravia,  
200 metros al Sur del Colegio  
Saint Francis – San José  
Phone: (+506) 297 68 83  
extim\_euro@racsca.co.cr

**Croatia**  
SILK ADRIA d.o.o.  
Josipa Lončara 3  
10090 Zagreb  
Phone: (+385) 1 3794 5800  
silk.adria@zg.t-com.hr

**Cyprus**  
Med Marketing  
17 Digeni Akritas Ave  
P.O. Box 27017  
1641 Nicosia

**Czech Republic**  
Husqvarna Cesko s.r.o.  
Türkova 2319/5b  
149 00 Praha 4 – Chodov  
Bezplatná infolink :  
800 100 425  
servis@cz.husqvarna.com

**Denmark**  
GARDENA DANMARK  
Lejrvæj 19, st.  
3500 Værløse  
Tlf.: (+45) 70264770  
husqvarna@husqvarna.dk  
www.gardena.com / dk

**Dominican Republic**  
BOSQUESA, S.R.L.  
Carretera Santiago Licey  
Km. 5 ½  
Esquina Copal II,  
Santiago  
Dominican Republic  
Phone: (+809) 736-0333  
joserbosquesa@claro.net.do

**Ecuador**  
Husqvarna Ecuador S.A.  
Arupos E1-181 y 10 de  
Agosto Quito, Pichincha  
Tel: (+593) 22800739  
francisco.jacome@  
husqvarna.com.ec

**Estonia**  
Husqvarna Eesti OÜ  
Gardena Division  
Valdeku 132  
Tallinn  
11216, Estonia  
info@gardena.ee

**Finland**  
Oy Husqvarna Ab  
Gardena Division  
Lauttarhankatu 8 B / PL 3  
00581 HELSINKI  
info@gardena.fi

**France**  
Husqvarna France  
9/11 Allée des pierres mayettes  
92635 Gennevilliers Cedex  
France  
http : //www.gardena.com / fr  
N° AZUR: 0 810 00 78 23  
(Prix d'un appel local)

**Georgia**  
ALD Group  
Belashvili 8  
1159 Tleilisi

**Great Britain**  
Husqvarna UK Ltd  
Preston Road  
Aycliffe Industrial Park  
Newton Aycliffe  
County Durham  
DL5 6UP  
Phone:+44 (0) 344 8444558  
customer.services@husqvarna.com.uk

**Greece**  
Π.ΠΑΠΑΔΟΠΟΥΛΟΣ ΑΕΒΕ  
Αδριανού 92  
Αθήνα  
ΤΚ.104 42  
ΕΛΛΑΔΑ  
Τηλ., (+30) 210 5193100  
info@papadopoulos.com.gr

**Hungary**  
Husqvarna Magyarország Kft.  
Erzed u. 1-3  
1044 Budapest  
Telefon: (+36) 1 251-4161  
vevosszolgalat.husqvarna@  
husqvarna.hu

**Iceland**  
Ó. Johnson & Kaaber  
Tunguhsali 1  
110 Reykjavik  
ooj@onjks.is

**Ireland**  
Husqvarna UK Ltd  
Preston Road  
Aycliffe Industrial Park  
Newton Aycliffe  
County Durham  
DL5 6UP  
info.gardena@husqvarna.com.uk

**Italy**  
Husqvarna Italia S.p.A.  
Via Santa Vecchia 15  
23968 VALMADRERA (LC)  
Phone: (+39) 0341.203.111  
assistenza.italia@  
it.husqvarna.com

**Japan**  
KAKUICHI Co. Ltd.  
Sumitomo Realty &  
Development Kojimachi  
BLDG., 8F  
5-1 Nibanncyo  
Chiyoda-ku  
Tokyo 102-0084  
Phone: (+81) 33 264 4721  
m\_ishihara@kaku-ichi.co.jp

**Kazakhstan**  
LAMED Ltd.  
155/1, Tazhibayevoy Str.  
050060 Almaty  
IP Schmidt  
Abayaveuna 3B  
110 005 Kostanay

**Korea**  
Kyung Jin Trading CO.,LTD.  
107-4, SunDuk Bld.,  
YangJae-dong,  
Seochu-gu,  
Seoul, (zipcode: 137-891)  
Phone: (+82) (0)2 574-6300

**Kyrgyzstan**  
Alye Maki  
Av. Moladaya Guardir J 3  
720014  
Bishkek

**Latvia**  
Husqvarna Latvija SIA  
Gardena Division  
Ulbrokas 19A  
LV-1021 Riga  
http://www.gardena.lv

**Lithuania**  
UAB Husqvarna Lietuva  
Gardena Division  
Atėtilies pl. 77C  
LT-52104 Kaunas  
info@gardena.lt

**Luxembourg**  
Magasins Jules Neuberg  
39, rue Jacques Stas  
Luxembourg-Gasperich 2549  
Case Postale No 12  
Luxembourg 2010  
Phone: (+352) 44 10 41 01  
api@neuberg.lu

**Mexico**  
AFOSA  
Av. Lopez Mateos Sur # 5019  
Col. La Calma 4570  
Zapopan, Jalisco, Mexico  
Phone: (+52) 33 3818-3434  
icornejo@afosa.com.mx

**Moldova**  
Convel S.R.L.  
290A Muncesti Str.  
2002 Chisinau

**Netherlands**  
Husqvarna Nederland B.V.  
GARDENA Division  
Postbus 50131  
1305 AC ALMERE  
Phone: (+31) 36 521 00 10  
info@gardena.nl

**Neth. Antilles**  
Jonka Enterprises N.V.  
Sta. Rosa Weg 196  
P.O. Box 8200  
Curaçao  
Phone: (+599) 9 767 66 55  
pgm@onjks.com

**New Zealand**  
Husqvarna New Zealand Ltd.  
PO Box 76-437  
Manukau City 2241  
Phone: (+64) (0) 9 9202410  
support.nz@husqvarna.co.nz

**Norway**  
Husqvarna Norge AS  
Gardena Division  
Traskemeien 36  
1708 Sarpsborg  
Tel: 69 10 47 00  
www.gardena.no

**Peru**  
Husqvarna Perú S.A.  
Jr. Ramón Cárcamo 710  
Lima 1  
Tel.: (+51) 1 3320400 ext. 416  
juan.remuze@husqvarna.com

**Poland**  
Husqvarna  
Poland Spółka z o.o.  
ul. Wysockiego 15 b  
03-371 Warszawa  
Phone: (+48) 22 330 96 00  
gardena@husqvarna.com.pl

**Portugal**  
Husqvarna Portugal, SA  
Lagoa - Albarraque  
2635 - 595 Rio de Mouro  
Tel: (+351) 21 922 85 30  
Fax : (+351) 21 922 85 36  
info@gardena.pt

**Romania**  
Madex International Srl  
Soseaua Odaii 117-123,  
RO 013603 Bucuresti, 51  
Phone: (+40) 21 352.76.03  
made@ines.ro

**Russia / Россия**  
ООО „Хюксарна“  
141400, Московская обл.,  
г. Химки,  
улица Ленинградская,  
владение 39, стр.6  
Бизнес Центр  
„Химки Бизнес Парк“,  
помещение 0802\_04  
http://www.gardena.ru

**Serbia**  
Dobel d.o.o.  
Autoput za Novi Sad bb  
11273 Belgrade  
Phone: (+381) 11 8488812  
miroslav.jejina@domel.rs

**Singapore**  
Hy-Fly PRIVATE LIMITED  
40 Jalan Pemimpin  
#02-08 Tat Ann Building  
Singapore 577185  
Phone: (+65) 6253 2277  
shiyung@hyray.com.sg

**Slovak Republic**  
Husqvarna Česko s.r.o.  
Türkova 2319/5b  
149 00 Praha 4 – Chodov  
Bezplatná infolinka:  
800 154 044  
servis@sk.husqvarna.com

**Slovenia**  
Husqvarna Austria GmbH  
Industriezeile 36  
4010 Linz  
Tel.: (+43) 732 77 01 01-485  
service.gardena@  
husqvarnagroup.com

**South Africa**  
Husqvarna  
South Africa (Pty) Ltd  
Postnet Suite 250  
Private Bag X6,  
Cascades, 3202  
South Africa  
Phone: (+27) 33 846 9700  
info@gardena.co.za

**Spain**  
Husqvarna España S.A.  
Calle de Rivas nº 10  
28052 Madrid  
Phone: (+34) 91 708 05 00  
atencioncliente@gardena.es

**Suriname**  
Agrofix n.v.  
Verlengde Hogestraat #22  
Phone: (+597) 472426  
agrofix@sr.net  
Pobox : 2006  
Paramaribo  
Suriname – South America

**Sweden**  
Husqvarna AB  
Gardena Division  
S-561 82 Huskvarna  
info@gardena.se

**Switzerland / Schweiz**  
Husqvarna Schweiz AG  
Consumer Products  
Industriestrasse 10  
5506 Mägenwil  
Phone: (+41) (0) 62 887 37 90  
info@gardena.ch

**TURKEY**  
GARDENA Dost Diş Ticaret  
Müessesilik A.Ş.  
Sanayi Cad. Adil Sokak  
No: 1/B Kartal  
34873 Istanbul  
Phone: (+90) 216 38 93 939  
info@gardena-dost.com.tr

**Ukraine / Україна**  
ТОВ „Хусарна Україна“  
вул. Васильківська, 34,  
офіс 204-г  
03022, Київ  
Tel. (+38) 044 498 39 02  
info@gardena.ua

**Uruguay**  
FELI SA  
Entre Rios 1083 CP 11800  
Montevideo – Uruguay  
Tel : (+598) 22 03 18 44  
info@felisa.com.uy

**Venezuela**  
Corporación Casa y Jardín C.A.  
Av. Caroni, Edif. Trezmen, P.B.  
Colinas de Bello Monte,  
1050 Caracas.  
Tlf : (+58) 212 992 33 22  
info@casayjardin.net.ve

TL350-52.960.01/1119  
599199501  
Husqvarna AB  
S-561 82 Huskvarna  
Sweden

Our policy of continuous improvement means that the specification of products may be altered from time to time without prior notice.

Copyright © 2019 Flymo S.A. All rights reserved.

Flymo® and other product and feature names are registered or unregistered trademarks of Flymo S.A.

