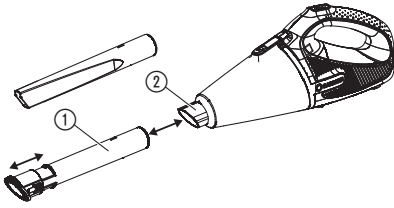
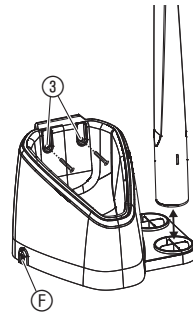
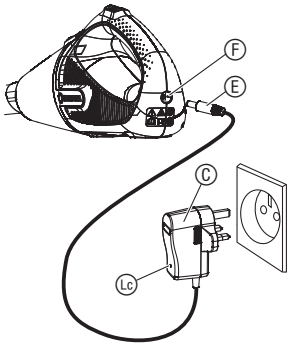
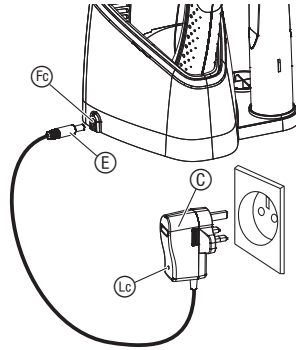
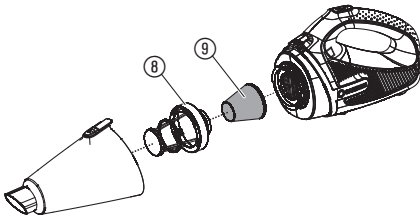
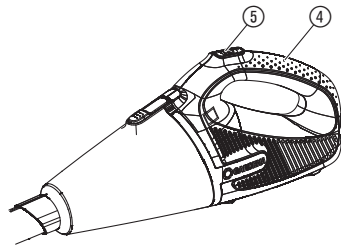
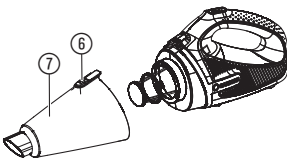
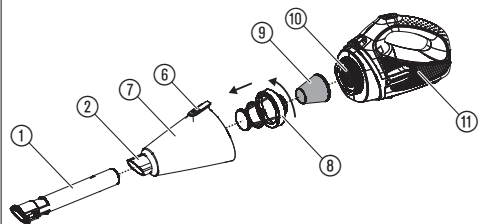


SimpliVac Li PNC 967986001

**EN Operators Manual**  
Battery Handheld Vacuum Cleaner

---

**A1****A2****O1****O2****O3****O4****O5****M1**

# FLYMO Battery Handheld Vacuum Cleaner SimpliVac Li

1. SAFETY	11
2. ASSEMBLY	13
3. OPERATION	14
4. MAINTENANCE	14
5. STORAGE	15
6. TROUBLESHOOTING	15
7. TECHNICAL DATA	15
8. ACCESSORIES	16
9. SERVICE/WARRANTY	16

## Original instructions.



This product may be used under supervision, or if instruction regarding the safe use of the product has been provided and the resulting dangers have been understood, by children aged 8 and above, as well as by persons with

physical, sensory or mental disabilities or a lack of experience and knowledge. Children must not be allowed to play with the product. Cleaning and user maintenance must not be performed by children without supervision. The use of this product by young people under the age of 16 is not recommended.

### Intended use:

The **FLYMO Handheld Battery Vacuum Cleaner** is intended to vacuum various dry and moist particles, in private domestic gardens and allotments.

The product is not intended for continuous operation.

### DANGER! Risk of injury!

**Do not vacuum ash with the product, especially hot ash.**

## 1. SAFETY

### IMPORTANT!

Read the operator's manual carefully before use and keep for future reference.

#### Symbols on the product:



Read operator's manual.



Keep bystanders away.



Wear eye and ear protection.



Do not expose to rain.



For the charger:  
Remove plug from the mains immediately if the cable is damaged or cut.



Do not use the charging station outdoors.

#### General safety warnings

##### Electrical safety



**DANGER! Electric shock!**  
Risk of injury due to electric shock.

**The product must be supplied through a residual current device (RCD) having a rated residual operating current not exceeding 30 mA.**

The machine may not be operated if persons, especially children, or pets are in the area.

Walk, don't run.

Do not operate the machine in bad weather conditions, especially when there is a risk of lightning.

### Safe operating practices

#### 1. Training

- Read the instructions carefully. Be familiar with the controls and the correct use of the machine.
- Never allow children or people unfamiliar with these instructions to use the machine. Local regulations can restrict the age of the operator.
- Keep in mind, that the operator or user is responsible for accidents or hazards occurring to other people or their property.

#### 2. Preparation

- Obtain ear protection and safety glasses. Wear them at all times while operating the machine.
- While operating the machine always wear substantial footwear and long trousers. Do not operate the machine when barefoot or wearing open sandals. Avoid wearing clothing that is loose fitting or that has hanging cords or ties.
- Do not wear loose clothing or jewellery that can be drawn into the air inlet. Keep long hair away from the air inlets.

- d) Operate the machine in a recommended position and only on a firm, level surface.
- e) Do not operate the machine on a paved or gravel surface where ejected material could cause injury.
- f) Before using, always visually inspect to see, that the shredding means, shredding means bolts and other fasteners are secure, the housing is undamaged and that guards and screens are in place. Replace worn or damaged components in sets to preserve balance. Replace damaged or unreadable labels.
- g) Before use, check the supply and extension cord for signs of damage or aging. If the cord becomes damaged during use, disconnect the cord from the supply immediately. **DO NOT TOUCH THE CORD BEFORE DISCONNECTING THE SUPPLY.** Do not use the machine if the cord is damaged or worn.
- h) Never operate the machine while people, especially children, or pets are nearby.

### 3. Operation

- a) Before starting the machine, make certain that the feeding chamber is empty.
- b) Keep your face and body away from the feed intake opening.
- c) Do not allow hands or any other part of the body or clothing inside the feeding chamber, discharge chute, or near any moving part.
- d) Keep proper balance and footing at all times. Do not overreach. Never stand at a higher level than the base of the machine when feeding material into it.
- e) Always stand clear of the discharge zone when operating this machine.
- f) When feeding material into the machine be extremely careful that pieces of metal, rocks, bottles, cans or other foreign objects are not included.
- g) If the cutting mechanism strikes any foreign objects or if the machine should start making any unusual noise or vibration, immediately shut off the power source and allow the machine to stop. Disconnect the machine from the supply and take the following steps before restarting and operating the machine:
  - inspect for damage;
  - replace or repair any damaged parts;
  - check for and tighten any loose parts.
- h) Do not allow processed material to build up in the discharge zone; this may prevent proper discharge and can result in kickback of material through the intake opening.
- i) If the machine becomes clogged, shut-off the power source and disconnect the machine from supply before cleaning debris.
- j) Never operate the machine with defective guards or shields, or without safety devices.
- k) Keep the power source clean of debris and other accumulations to prevent damage to the power source or possible fire.
- l) Do not transport this machine while the power source is running.
- m) Stop the machine, and remove plug from the socket. Make sure that all moving parts have come to a complete stop

- whenever you leave the machine,
- before clearing blockages or unclogging chute,
- before checking, cleaning or working on the machine.
- n) Do not tilt the machine while the power source is running.

### 4. Maintenance and storage

- a) When the machine is stopped for servicing, inspection, or storage, or to change an accessory, shut off the power source, disconnect the machine from the supply and make sure that all moving parts are come to a complete stop. Allow the machine to cool before making any inspections, adjustments, etc. Maintain the machine with care and keep it clean.
- b) Store the machine in a dry place out of the reach of children.
- c) Always allow the machine to cool before storing.
- d) When servicing the shredding means be aware that, even though the power source is switched off due to the interlock feature of the guard, the shredding means can still be moved.
- e) Replace worn or damaged parts for safety. Use only genuine replacement parts and accessories.
- f) Never attempt to override the interlocked feature of the guard.

### Additional safety warnings

#### Battery safety



#### **DANGER! Fire risk!**

**The battery product to be charged must be placed on a nonflammable, heat resistant and non-conductive surface while charging.**

**Keep corrosive, flammable and easily combustible objects clear of the battery charger and the battery product.**

**Do not cover the battery charger and the battery product while charging.**

Disconnect the battery charger immediately in the event of smoke formation or fire.

Only use the original FLYMO Charger to charge the battery. The use of other battery chargers may damage the batteries irreparably and even cause a fire.

Do not charge any third-party batteries. There is a risk of fire and explosion!

If you notice fire: Extinguish the flames with oxygen reducing materials.



#### **DANGER! Risk of explosion!**

**Protect battery products from heat and fire. Do not leave on radiators or expose to strong sunshine for long periods.**

**Do not operate in explosive atmospheres, such as in the presence of flammable liquids, gases, or dust. Battery products may create sparks which could ignite the dust or fumes.**

Only charge and use the battery product in ambient temperatures of between 0 °C and 40 °C. Allow battery to cool down after long periods of use.

Check the charging cable regularly for signs of damage or ageing (brittleness). Only use it in perfect condition.

Do not stow or transport the battery product above 45 °C or in direct sunlight. Ideally, the battery product should be stored below 25 °C so that self-discharge is low.

Do not expose the battery product to rain or wet conditions. Water entering a battery product will increase the risk of electric shock.

If usage of the battery is not planned for a certain time (winter period) reload the battery to avoid a deep discharge.

Do not store the battery product in places where static electricity is present.

### Electrical safety



#### **DANGER! Cardiac arrest!**

**This product makes an electromagnetic field while it operates. This field may under some conditions interfere with active or passive medical implants. To decrease the risk of conditions that can possibly injure or kill, we recommend persons with medical implants to speak with their physician and the medical implant manufacturer before you operate the product.**

Before using the product and after a powerful impact, check for signs of wear or damage and repair as necessary.

If the product can no longer be switched off in the event of a defect, place the product on a solid surface and monitor it until the battery is empty. Send the defective product to our FLYMO Service Centre.

Never attempt to use an incomplete product or one with an unauthorised modification.

Do not charge a damaged product. Please contact the FLYMO service department.

### Personal safety



#### **DANGER! Risk of suffocation!**

**Small parts can be easily swallowed. There is also a risk that the polybag can suffocate toddlers. Keep toddlers away when you assemble the product.**

Know how to stop the product quickly in an emergency. Only work in the daylight or when visibility is good.

Check your product before each use. Always visually inspect your Hedge Trimmer before each use. Check that the ventilation slots are not obstructed in any way.

If the product got hot while operation, let it cool down before storage.

Do not overload the product.

Warning! When wearing hearing protection, and due to the noise produced by the product, the operator may not notice persons approaching.

Inspect the filter cage for damages before usage. Do not use the product with a damaged, or without the filter cage. The filter cage can be ordered through the FLYMO service.

Do not use the product without the debris container assembled.

Do not vacuum any hot, or corrosive materials.

Do not vacuum water.

Do not use the product while you are tired or under the influence of drugs, alcohol or medication. A moment of inattention while you operate the product may result in serious personal injury.

## 2. ASSEMBLY



**Wait for the engine to stop before you assemble the product.**

### **To assemble the nozzle [Fig. A1]:**

2 nozzles are in the scope of delivery:

- Crevice nozzle, long
- Brush nozzle

### **To assemble the nozzle:**

→ Slide the nozzle ① into the suction connection ② until the nozzle is firmly seated.

If required, the brush head can be slid forward at the brush nozzle.

### **To remove the nozzle:**

→ Remove the nozzle ① from the suction connection ②.

### **To assemble the charging station on the wall [Fig. A2]:**

The screws (diameter 3.5 mm) are not in the scope of delivery. Suitable fixing material is available from your specialist store.

→ Assemble the charging station to the wall by using the two holes ③ (hole distance 42.6 mm).

If the charging station is mounted on the wall, the nozzle must be removed to charge the vacuum cleaner (otherwise the vacuum cleaner will not engage correctly in the charging station).

The nozzles can be attached to the side of the charging station.

## 3. OPERATION



**Wait for the engine to stop before you adjust or transport the product.**



### **CAUTION!**

**Overvoltage damages the battery and the charging power supply.**

→ **Make sure that you use the correct mains voltage.**

Before you use the battery the first time, the battery must be completely charged.

The lithium-ion battery can be charged in any state of charge and the charging process can be disconnected at any time without to damage the battery (no memory effect).

If the vacuum cleaner switches off during operation, the battery is empty and must be charged (it may be possible that the vacuum cleaner can be started again briefly afterwards, but then switches off automatically immediately).

When the battery charging cable (E) is connected to the charging station, the vacuum cleaner can be charged via the charging station.

→ Insert the vacuum cleaner into the charging station.

1. Connect the charging power supply (C) into a mains socket.
2. Connect the battery charger cable (E) to the charging socket of the vacuum (F) – or – of the charging station (F).

**When the battery charging indicator (L) flashes green, the battery is being charged.**

**When the battery charging indicator (L) illuminates green, the battery is completely charged** (charging time, see 7. TECHNICAL DATA).

3. Examine the charge status regularly while you charge.
4. When the battery is completely charged, disconnect the battery charger cable (E) from the charging socket (F).
5. Disconnect the charging power supply (C) from the mains.

## 4. MAINTENANCE



**Wait for the engine to stop before you maintain the product.**

**To clean the vacuum cleaner [Fig. M1]:**



**DANGER! Risk of injury!  
Risk of injury and risk of damage to the product.**

1. **Do not clean the product with water or with a water jet (in particular high-pressure water jet).**
2. **Do not clean with chemicals including petrol or solvents. Some can destroy critical plastic parts.**

**The airflow slots (11) must always be clean.**

1. Remove the nozzle (1) from the suction connection (2).
2. Push the unlock button (6) and pull off the debris container (7).

## 5. STORAGE

**To put into storage:**

The product must be stored away from children.

**Areas of application [Fig. O3]:**

To replace the filters, see 4. MAINTENANCE  
*Clean the vacuum cleaner.*

1. **For outdoor and indoor use:**

With coarse filter (9).

**The filter cage (8) must not be mounted without the filter (9).**

**To start the vacuum cleaner [Fig. O4]:**

**To start:**

→ Hold the handle (4) and slide the start switch (5) forward.  
(The start switch remains locked and does not have to be held).

*The vacuum cleaner starts.*

**To stop:**

→ Pull the start switch (5) backwards.

*The vacuum cleaner stops.*

**To empty the debris container [Fig. O5]:**

1. Hold the vacuum cleaner downwards, push the unlock button (6) and pull off the debris container (7).
2. Empty the debris container (7).
3. If necessary, clean the filter (see 4. MAINTENANCE).
4. Place the debris container (7) on the bottom of the vacuum cleaner.
5. Push the debris container (7) against the top of the hand vacuum cleaner until the unlock button (6) audibly engages.

3. Empty the debris container (7).

4. Turn the filter cage (8) anti-clockwise and remove the coarse filter cage (8) (bayonet lock).

5. Remove the filter (9).

6. Clean all removed parts under running water.

7. Clean the suction opening (10), the airflow slots (11) and the motor unit with a dry cloth.

8. Reassemble all parts in reverse order.

**To clean the charger:**

Make sure that the surface and the contacts of the charging socket and the charger always are clean and dry before you connect the charger.

**Do not use running water.**

Clean the contacts and the plastic parts with a soft and dry cloth.

1. Charge the battery.
2. Clean the vacuum cleaner and the charging power supply (see 4. MAINTENANCE).

3. Store the vacuum cleaner and the charging power supply in a dry, enclosed and frost-free place.

### Disposal:

(in accordance with RL2012/19/EC)

The product must not be disposed of to normal household waste. It must be disposed of in line with local environmental regulations.



The FLYMO battery contains lithium-ion cells that should not be disposed of with normal household waste at the end of its life.





### IMPORTANT!

Dispose of the product through or via your municipal recycling collection centre.

## 6. TROUBLESHOOTING



Wait for the engine to stop before you troubleshoot the product.

Problem	Possible Cause	Remedy
Vacuum cleaner vacuums poorly	Debris container is full.	→ Empty the debris container.
	Filter is dirty.	→ Clean the filter.
Suction material falls out of the suction opening	Rubber valve of the debris container is blocked e.g. by small branches or leaves.	→ Remove blocking suction material from the rubber valve.
	Rubber valve is no longer centered in the debris container holder.	→ Loosen the screw of the valve, center it and tighten the screw again.
Vacuum cleaner does not start	Vacuum cleaner was just disconnected from the charger socket.	→ Wait approx. 4 Sec. after disconnecting from the charger socket.
Charging station is mounted on the wall – vacuum cleaner is not charging	Nozzle was not removed from vacuum cleaner.	→ Remove the nozzle for charging.
Charging control lamp  on the charging power supply does not illuminate	Charging power supply is not plugged in correctly.	→ Plug the charging power supply into a wall outlet.
Charging control lamp  on the charger flashes red	Battery temperature is out of range.	→ Use the battery in surroundings where temperatures are between 0 °C and 40 °C.



**NOTE: For any other malfunctions please contact the FLYMO service department. Repairs must only be done by FLYMO service departments or specialist dealers approved by FLYMO.**

## 7. TECHNICAL DATA

Handheld Battery Vacuum Cleaner	Unit	Value (PNC 967986001)
Rated current	A	8
Suction power	l/min.	1500
Weight	kg	1.3
Sound pressure level* $L_{PA}^1$	dB (A)	78
Uncertainty $k_{PA}$		2.5
Sound power level* $L_{WA}^2$	dB (A)	86 / 89
measured/guaranteed		3
Uncertainty $k_{WA}$		
Hand/arm vibration* $a_{vhw}^1$	m/s <sup>2</sup>	< 2.5
Uncertainty $k_a$		1.5

Measuring process complying with: <sup>1)</sup> EN 50636-2-100 <sup>2)</sup> RL 2000/14/EC



**NOTE:** The stated vibration emission value has been measured according to a standardized test procedure and can be used for comparison of one electric power tool with another. It can also be used for preliminary evaluation of exposure. The vibration emission value can vary during actual use of the electric power tool.

<b>Battery</b>	<b>Unit</b>	<b>Value</b>
<b>Battery voltage</b>	V (DC)	18
<b>Battery capacity</b>	Ah	2.6
<b>Battery charging time 80 % / 100 % (approx.)</b>	min.	205 / 280

<b>Charging Power Supply</b>	<b>Unit</b>	<b>Value (PNC 598444901)</b>
<b>Mains voltage</b>	V (AC)	100 – 240
<b>Mains frequency</b>	Hz	50 – 60
<b>Rated Power</b>	W	16
<b>Output voltage</b>	V (DC)	21
<b>Max. output current</b>	mA	600

## 8. ACCESSORIES

**FLYMO Spare Filter (coarse filter)** To replace the coarse filter.

**PNC 593962401**

## 9. SERVICE/WARRANTY

### **Service:**

Please contact the address on the back page.

### **Warranty statement:**

In the event of a warranty claim, no charge is levied to you for the services provided.

Husqvarna UK Ltd. grants a warranty for all original FLYMO new products for two years from the date of original purchase from the retailer, provided that the devices have been for private use only. This manufacturer's warranty does not apply to products acquired second hand. This warranty includes all significant defects of the product that can be proved to be material or manufacturing faults. This warranty is fulfilled by supplying a fully functional replacement product or by repairing the faulty product sent to us free of charge; we reserve the right to choose between these options. This service is subject to the following provisions:

- The product has been used for its intended purpose as per the recommendations in the operating instructions.
- Neither the purchaser nor a third party has attempted to open or repair the product.
- Only Original FLYMO replacement parts and wear parts have been used for operation.

- Presentation of the receipt.

Normal wear and tear of parts and components (such as blades, blade fixing parts, turbines, light bulbs, V-belts/toothed belts, impellers, air filters, spark plugs), visual changes, wear parts and consumables are excluded from the warranty.

This manufacturer's warranty is limited to replacement and repair of products in accordance with the abovementioned conditions. The manufacturer's warranty does not constitute an entitlement to lodge other claims against us as a manufacturer, such as for damages. This manufacturer's warranty does **not**, of course, affect statutory and contractual warranty claims against the dealer/retailer.

The manufacturer's warranty is governed by the law of the Federal Republic of Germany.

In case of a warranty claim, please return the faulty product, together with a copy of the receipt and a description of the fault, with postage paid to the service address.

### **Consumables:**

The filters and nozzles are consumables and are not included in the warranty.



# PRODUCT LIABILITY

---

In accordance with the German Product Liability Act, we hereby expressly declare that we accept no liability for damage incurred from our products where said products

have not been properly repaired by a FLYMO-approved service partner or where original FLYMO parts or parts authorised by FLYMO were not used.

# EC DECLARATION OF CONFORMITY

---

The undersigned hereby certifies as the authorized representative of the manufacturer, Husqvarna AB, 561 82 Huskvarna, Sweden, that, when leaving our factory, the unit(s) indicated below is/are in accordance

with the harmonised EU guidelines, EU standards of safety and product specific standards. This certificate becomes void if the unit(s) is/are modified without our approval.

Description of the product:	<b>Accu Vacuum Cleaner</b>
Product type	<b>SimpliVac Li</b>
Article-Number	<b>9679860-01</b>
CE-Directives	<b>2006/42/EC 2014/30/EU 2011/65/EU 2000/14/EC 2014/35/EU</b>
Harmonised EN	<b>EN ISO 12100 EN 60335-1 EN 60335-2-2 IEC 60335-2-100 EN 60335-2-29</b>
Deposited Documentation	<b>GARDENA Technical Documentation, M. Kugler, 89079 Ulm</b>
Conformity Assessment according to	<b>2000/14/EC Procedure: art. 14 Annex V</b>
Year of CE marking:	<b>2019</b>
Noise level: measured / guaranteed	<b>86 dB (A)/ 89 dB (A)</b>

Ulm, 29.10.2019

Authorised representative:



**John Thompson**  
Product and Marketing Director EUAP

---

**Great Britain**

Husqvarna UK Ltd  
Preston Road  
Aycliffe Industrial Park  
Newton Aycliffe  
County Durham  
DL5 6UP  
Phone: +44 (0) 344 8444558  
customer.services@husqvarna.co.uk

F9340-20.960.01/1019  
Husqvarna AB  
S-561 82 Huskvarna  
Sweden

