

**ANVÄNDARHANDBOK
OPERATION INSTRUCTIONS**

HTC 30D

HTC 55D

HTC 75D

OPERATING, MAINTENANCE AND SAFETY MANUAL

HTC 30D, HTC 55D och HTC 75D

PLEASE READ THIS MANUAL CAREFULLY BEFORE ASSEMBLING AND FOLLOW ALL INSTRUCTIONS, ESPECIALLY SAFETY.

THIS MANUAL IS NOT A REPAIR GUIDE.

SAFETY INSTRUCTIONS

WARNING: This equipment contains hazardous dust. Only authorised persons may empty and maintain the equipment, inclusive removing the plastic bag and filter. Proper personnel protective equipment must be used.

1.1 ELECTRICAL EQUIPMENT

- Repairs to electrical equipment must only be undertaken by authorised persons.
- Ensure the power supply is disconnected before work on the unit.
- Naturally, local power safety regulations should also be checked.
- Do not pull the cable. The unit may not be used when cable or switch is defect.

1.2. ENVIRONMENT

- May never be used in wet spaces or near toxic or explosive gases or liquids.

1.3 CARE

- Always tidy away hoses and cleaning equipment after use to prevent accidents.
- Ensure that the machine is undamaged before using. Any damage has to be measured.

1.4 HAZARDOUS DUST

- Face masks, safety goggles and gloves must be worn when changing bags and/or filter.
- Check local health- and safety regulations.
- Not permitted to suck liquids or explosive gases.

1.5 SUCTION INJURIES

- Never place the suction piece against bare skin as the pressure can cause burst blood vessels.

1.6 NOISE

- Please note the suction piece and suction inlet can generate noise levels harmful to health.
- Always check local health- and safety regulations for noise.

2. OPERATING

The machine is for sucking and separating dry, not combustive dust with limit value of explosion $>0.1\text{mg}/\text{m}^3$.

The motor is started by the switch. Dust laden air is then sucked through the inlet valve at high speed via the suction hose. The air is slowed down by the cyclone and coarse dust particles are separated out, partly by centrifugal force and partly by gravity. Air and finer particles then pass through the tube filter where separation is made. The machine is designed for filter cleaning by reverse air pulse.

The separated dust accumulates in the cyclone until the machine is switched off, when it drops through the bottom flap into the plastic bag.

3. USING

Before using must the user be educated in handling the vacuum cleaner and the hazardous dust.

Connect the electric plug to an outlet with correct voltage (see the designation plate).

From time to time the filter must be cleaned. This must be done before changing the plastic bag. Even appropriate when the working is completed or when there is poor suction.

Procedure: Unplug the hose so that the inlet will be covered. Cover the intake of the overpressure valve (placed between the two hoses connecting the main tank the cover for the micro filters), let the machine build up vacuum for a few seconds then quickly push down on the top handle and release it slowly. Repeat the procedures 5-10 times. If suction remains poor, the filter should be replaced.

The plastic bag may only be replaced after cleaning the filter.

The plastic bag must be tied up after removing.

Only use original parts.

4. CHANGE OF FILTER

Proper personnel protective equipment must be used.

Shut off the machine and pull the plug out of the socket.

1.1 MAIN FILTER

Loosen the 3 clamps between the tank and the tank cover, remove the tank cover. Loosen the 3 latches between the tank and the lower cykon and rotate the tank. Rotate the filter plate counter clock vice 10 deg and lift filter and holder gently up side down on a table. Remove the locking nut and then draw the plastic bag over the filter unit. Lift the filter gently and pinch up the bag by hand and then tie the bag up. This bag must be taken care of in a proper way.

Insert a new filter in reversed order. Do not tighten the nut to hard, the filter may be damaged. Only original filter may be used.

1.2 MICRO FILTER

Loosen the three latches holding the filter cover, carefully lift the filters up and into a proper plastic bag. This bag must be taken care of in a proper way. Insert new filters in reversed order. Check the sealing, when changing filters, and change defect sealing.

5. SERVICE

When cleaning and servicing the machine, You must switch off the machine and pull out the plug from the outlet.

- Avoid cleaning with high pressure cleaner. If necessary do not point at the openings on the machine, especially the opening for the cooling air.
- Before moving the machine from the working area, the machine must be cleaned. Furthermore must the inlet be locked with the expanding plug attached.
- All other equipment must be regarded contaminated and be treated thereafter.
- If possible use a special suitable room.
- Proper personnel protective equipment must be used.
- All parts after service, which are contaminated, must be taken care of in a proper way in plastic bags according to all regulations.
- If the vacuum cleaner has to be used for other purposes, it is extremely important that the vacuum cleaner will be cleaned, to avoid spreading of hazardous dust.

6. ACCESSORIES

PART.NO.	DESCRIPTION
1337056	TF5500 Tube filter (7 pcs/machine)
1337057	MF5500 Micro filter (2 pcs/machine)
1337032	Cleaning set
1376013	Longopack plastic bag (4-pack).

Other spare parts, see enclosed spare parts list.

7. WARRANTY

All Vacuum cleaners and accessories have a 12-month factory warranty for material and manufacturing defects. Do not attempt to repair the suction apparatus without the consent of the manufacture.

The warranty does not cover defects which are the result of normal wear and tear, negligence, defective use, unauthorised repair or the suction apparatus being connected to the incorrect voltage.

In the event of any complaint, the suction apparatus or an agreed part of it must be returned to us or our authorised representative for warranty examination and for any warranty repair or replacement.

8. PROBLEM SOLVING

HTC 30D, HTC 55D and HTC 75D are manufactured and made for a severe environment and tasks, but the user must notice that the machine contents of components which must be protected from hits and blows. Filter, sealing connections are carefully chosen for the environment of the operator. Therefore must the machine be treated with knowledge as to work correctly for many years.

Problem	Cause	Procedure
Motor don't start	No current Defect cable Defect switch	Connect the machine Change Change
Motor stops immediately	Wrong fuse	Connect to proper fuse
Motor runs, but no suction	Hose not connected Hose blocked No plastic bag	Connect the hose Clean the hose Mount plastic bag
Motor runs, but poor suction	Damage on the hose Blocked filter Top cover loose Dirt in the flap Defect sealing	Change hose Change filter Adjust Clean the flap. Use protective equipment Change current sealing
Dust is blowing from motor	Defect or loose filter	Adjust or change
Abnormal noise		Order service

SAVE THESE INSTRUCTIONS!

TEKNISKA DATA

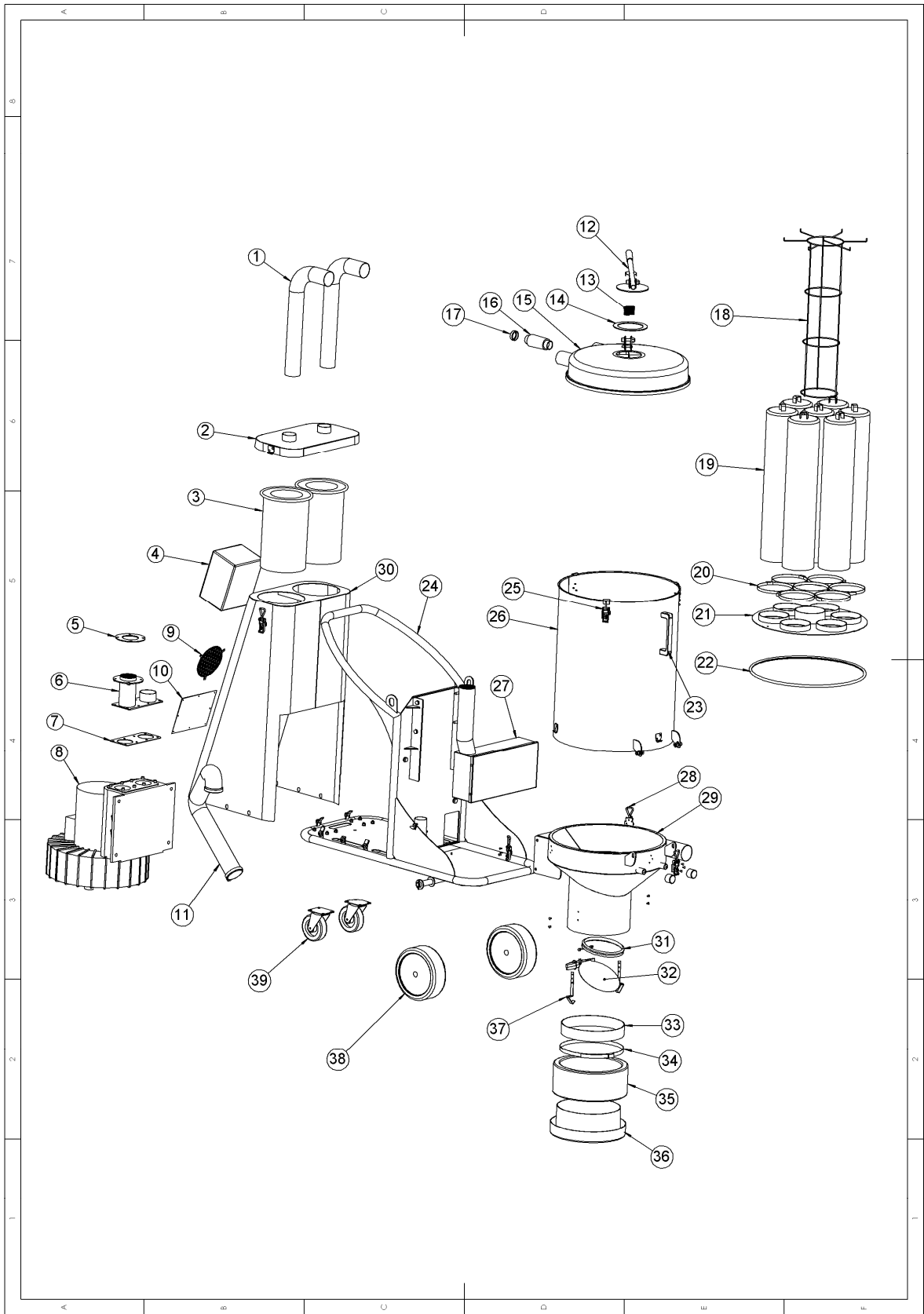
TECHNICAL PERFORMANCE

HTC 30D – HTC 55D – HTC 75D

	HTC 30D	HTC 55D	HTC 75D
MÄRKSPÄNNING Voltage/Spänning/Tension	400 VAC, 3-fas 50Hz	400 VAC, 3-fas 50 Hz	208 VAC, 3-fas 480 VAC, 3 fas 60 Hz
EFFEKTUTTAG Power/Leistung/Puissance	3000 W	5500 W	7500 W / 8600 W
MAX LUFTMÄNGD Airflow/Luftstrom/Débit d'air	300 m ³ /h	600m ³ /h	650m ³ /h
MAX UNDERTRYCK Vacuum/Unterdruck/Dépression	30 kPa	35 kPa	35 kPa
SUGSLANG Hose/Schlauch/Tuyau	10m x Ø 76mm	10m x Ø 76mm	10m x Ø 76mm
INLOPPSRÖR Inlet/Einlass/Entrée	Ø 76mm	Ø 76mm	Ø 76mm
FINFILTER Finefilter/Feinfilter/Filtre	>99.5% Filteryta 2.3m ²	>99.5% Filteryta 2.3m ²	>99.5% Filteryta 2.3m ²
MIKROFILTER Microfilter/Mikrofilter/Filtre micro	>99.95% Filteryta 5m ²	>99.95% Filteryta 5m ²	>99.95% Filteryta 5m ²
LJUDNIVÅ Soundlevel/Geräuschpegel/Niveau de bruit	72 dB(A)	74 dB(A)	74 dB(A)
UPPSAMLINGSSÄCK Plastic bag/Fangsack/Sac collecteur	Longopack	Longopack	Longopack
DIMENSION HXBXL Dimensions/Abmessung/Dimension	1880x740x1300 mm	1880x740x1300 mm	1880x740x1300mm
VIKT Weight/Gewicht/Poids	210 kg	225 kg	230 kg

Numbers for exploded view.

		HTC 75D		HTC 75D		
		HTC 30D	HTC 55D	3x208V	3x480V	
Nr	Art. Nr.	Art. Nr.	Art. Nr.	Art. Nr.	Benämning/Description	Qty
1	1332038	1332038	1332038	1332038	Slang /Hose	2
2	1350196	1350196	1350196	1350196	Lock / Cover	1
3	1337057	1337057	1337057	1337057	Filter / Filter	2
4	1262007	1262004	1262005	1262006	El skåp / Electrical box	1
5	1351233	1351233	1351233	1351233	Tätning / Sealing	1
6	1350210	1350203	1350203	1350203	Motor topp / Motor top	1
7	1351238	1351231	1351231	1351231	Tätning / Sealing	1
8	5352005	5352002	5352004	5352003	Vak. Pump / Vac. Pump	1
9	1331017	1331017	1331017	1331017	Galler / Screen	1
10	1350209	1350209	1350209	1350209	Lock / Cover	1
11	1332040	1332040	1332040	1332040	Slang /Hose	1
12	1345014	1345014	1345014	1345014	Handtag / Handle	1
13	1357056	1357056	1357056	1357056	Fjäder / Spring	1
14	1351237	1351237	1351237	1351237	Tätning / Sealing	1
15	1250202	1250202	1250202	1250202	Topp lock / Top cover	1
16	1349124	1349124	1349124	1349124	Vak. Ventil / Vac. Valve	1
17	1370021	1370021	1370021	1370021	Hylsa / Sleeve	1
18	1338091	1338091	1338091	1338091	Filter hållare / Filter holder	1
19	1337056	1337056	1337056	1337056	Tub Filter / Tube filter	7
20	1357071	1357071	1357071	1357071	Klämma / holder	7
21	1338090	1338090	1338090	1338090	Filter platta / Filter holder	1
22	1351229	1351229	1351229	1351229	Tätning / Sealing	1
23	1345011	1345011	1345011	1345011	Handtag / Handle	1
24	1323035	1323035	1323035	1323035	Vagn / Wagon	1
25	1341037	1341037	1341037	1341037	Hänken / Clamp	3
26	1322117	1322117	1322117	1322117	Tank / Tank	1
27	1350198	1350198	1350198	1350198	Ljuddämpare / Muffler	1
28	1341030	1341030	1341030	1341030	Hänken / Clamp	3
29	1322116	1322116	1322116	1322116	Nedre tank / Lower tank	1
30	1350197	1350197	1350197	1350197	Motorkåpa / Motor cover	1
31	1351234	1351234	1351234	1351234	V-ring / V-ring	1
32	1241027	1241027	1241027	1241027	Lucka / Flap	1
33	1351145	1351145	1351145	1351145	Glid skydd / Anti skid	1
34	1371001	1371001	1371001	1371001	Rem / Belt	1
35	1376013	1376013	1376013	1376013	Longopack / Longopack	1
36	1338087	1338087	1338087	1338087	Hållare / holder	1
37	1341032	1341032	1341032	1341032	Fjäder / Spring	2
38	1343034	1343034	1343034	1343034	Hjul / Wheel	2
39	1343035	1343035	1343035	1343035	Hjul / Wheel	2



**FÖRSÄKRAN OM ÖVERENSSTÄMMELSE
DECLARATION OF CONFORMITY
DECLARATION DE CONFORMITÉ
ERKLÄRUNG DER ÜBERSTIMMUNG
SAMSVARSERKLÆRING**

**Pullman Scandinavian AB
Industrivägen 10
S-777 91 SMEDJEBACKEN**

*Försäkrar under eget ansvar att maskinen
Declare under our sole responsibility that the machine
Certifie sous sa propre responsabilité que le produit ciaprès
Versichern auf eigener verantwortung, dass das Produkt
Forsikrer under eget ansvar at maskinen*

**HTC 30 D Nr/No: 2255100 - 2555999
HTC 55D Nr/No. 2555001 – 2555999
HTC 75D 208V Nr/No. 2575001 - 2575999
HTC 75D 480V Nr/No. 2586001 - 2586999
Tillv.år/Manufact. year/Baujahr: 2006**

*som omfattas av denna försäkring är i överensstämmelse med villkoren i:
included in this declaration, follows the provisions according to:
est conforme aux aux normes selon:
den folgenden Normen laut:
er i overensstemmelse med vilkårene i:*

**SS-EN 292-1, SS-EN 60 204-1
SS-EN 60335-1, SS-EN 60335-2-69 & A1
Machine Directive 98/37/EG
Low Voltage Drective 73/23/EEG
EMC Directive 89/336/EEG**

SMEDJEBACKEN 2006.01.01

Mats Lenmo
Kvalitetssamordnare
Quality Manager
Responsable de qualité