



**SPARE PARTS LIST**  
**HTC 500**



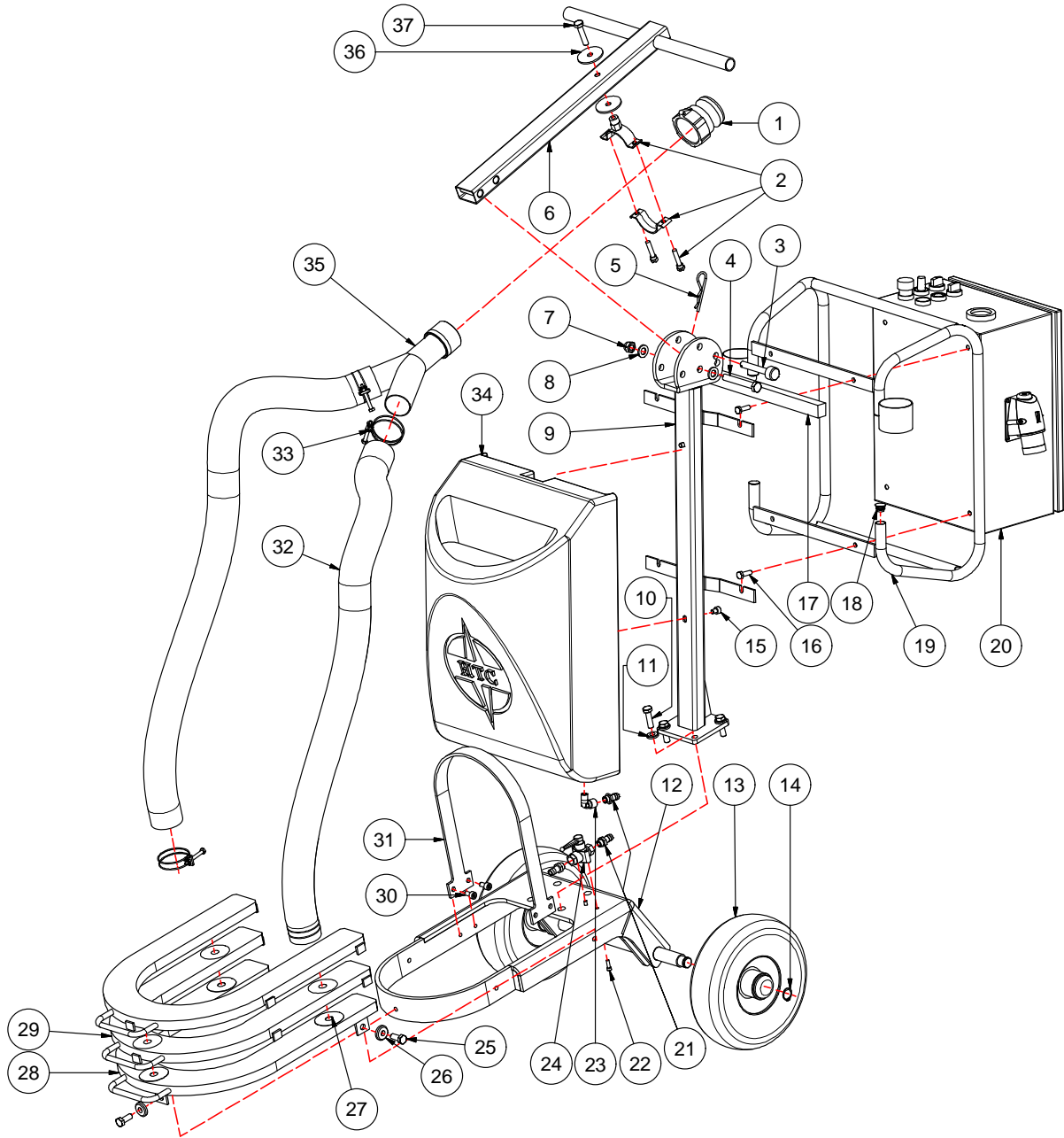


---

**Table of contents**

HTC 500 Chassis .....	2
HTC 500 Hose connection .....	4
HTC 500 Grinding head .....	5
HTC 500 Hinge bracket V2 (2010-08-10).....	9
HTC 500 Hinge bracket V3 (2012-04-26).....	10
HTC 500 Grinding holder polycord.....	11
HTC 500 Grinding holder cardan .....	13
HTC 500 Electrical 3x400v EU.....	15
HTC 500 Electrical 3x400 MS (Coming soon).....	17
HTC 500 Electrical 2x115v US.....	19
HTC 500 Electrical 1x230v EU (Coming soon) .....	21
HTC 500 Electrical 1x230v EU (Coming soon) .....	22
HTC 500 Electrical 3x230v NO .....	23
HTC 500 Electrical 3x230v JP (Coming soon) .....	25

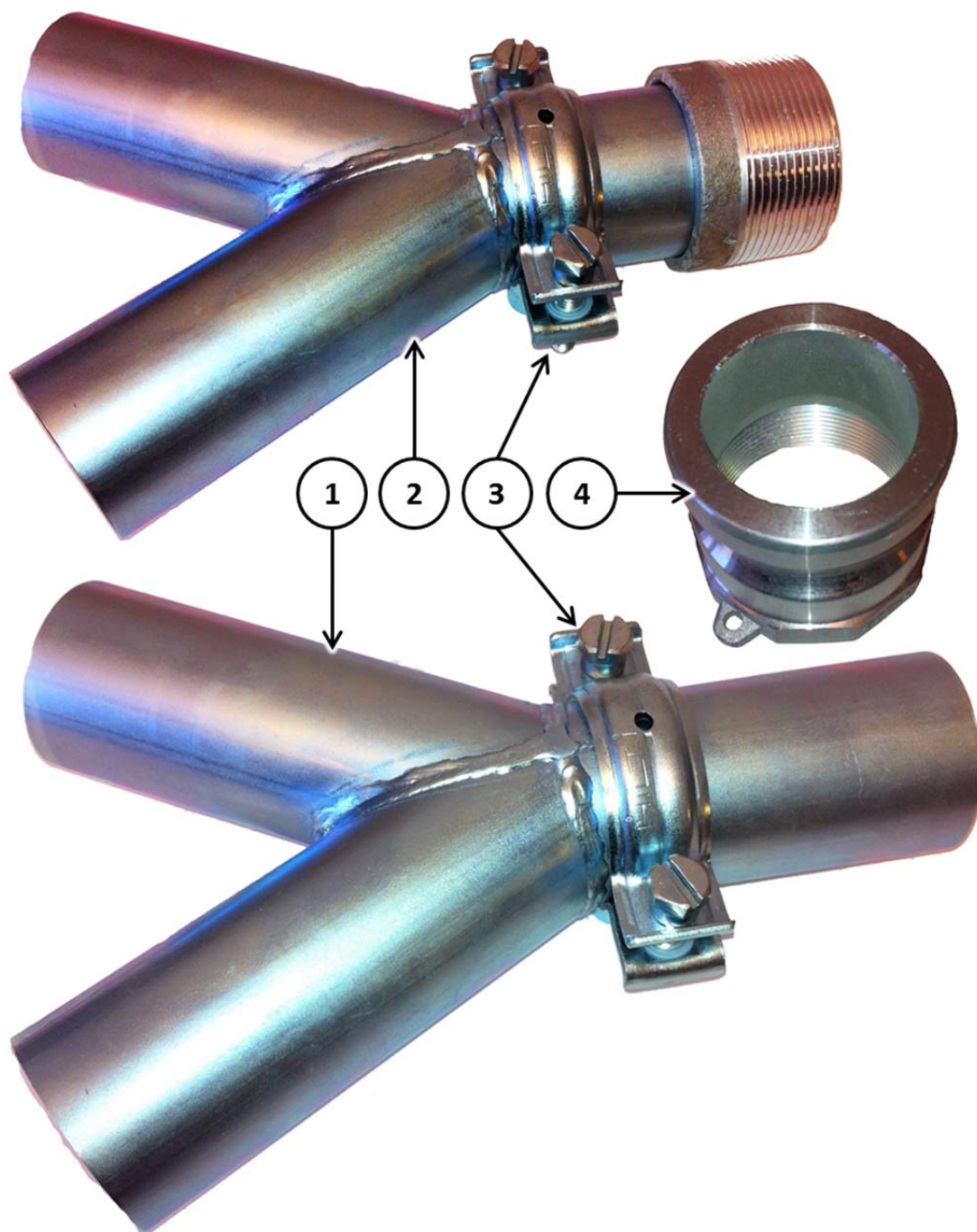
# HTC 500 Chassis



**HTC 500 Chassis**

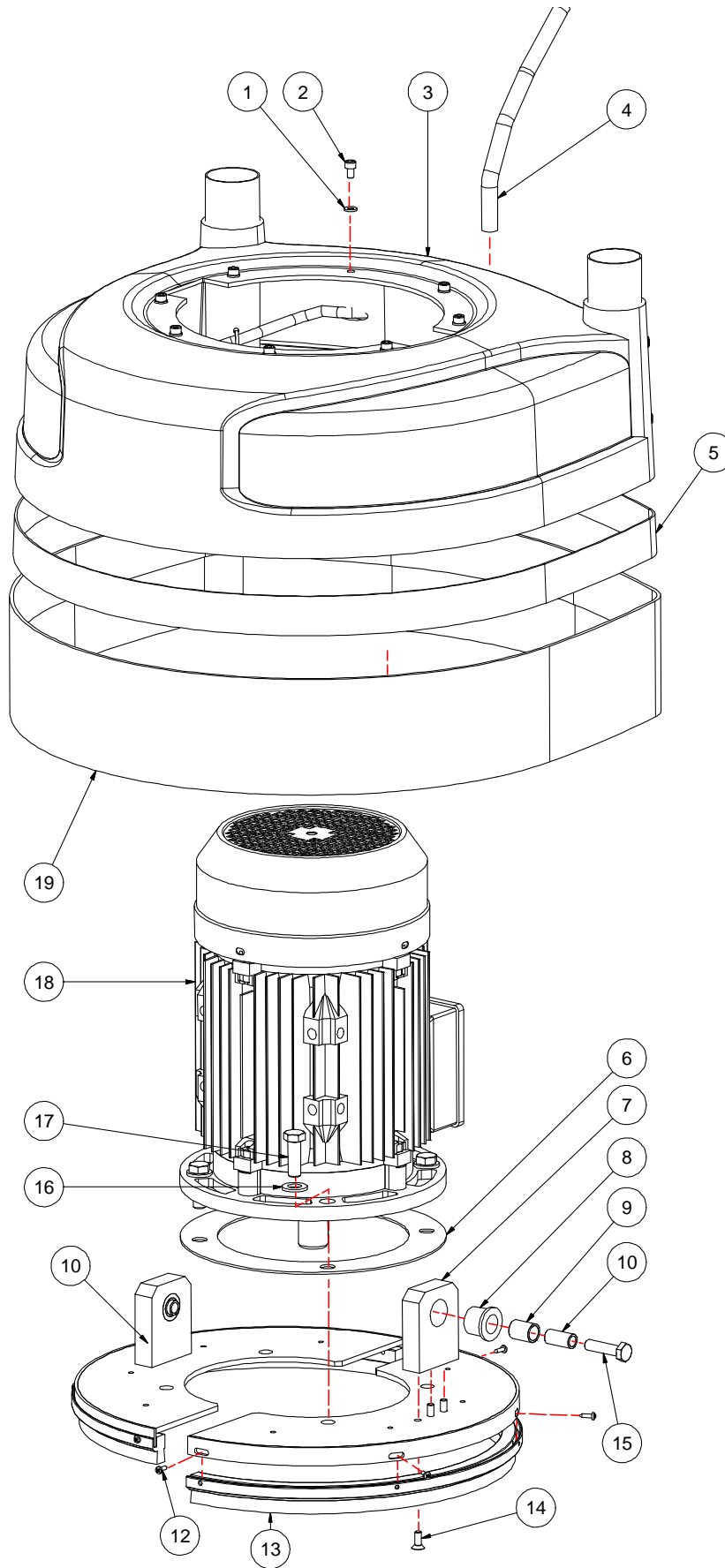
Item	Description	Part no	Qty
1	CAMLOCK 2" MALE INNER THREAD	593460001	1
2	PIPE CLAMP	593386301	1
3	PIN CHASSI	593380901	1
4	SCREW M12X85	593630101	1
5	LOCKING CLIP	593501501	1
6	HANDLE	593455101	1
	INSERT RECTANGULAR 50X30	593626001	2
	ROUND CAP FOR HANDLE	593625501	2
7	LOCK NUT M12	593495301	1
8	WASHER M12	593499401	2
9	CHASSIS POLE	593455301	1
10	SCREW M10X35	593495601	4
11	WASHER M10	593495701	4
12	CHASSIS BOTTOM PART	593455201	1
13	WHEEL BLACK	593397201	2
	WHEEL GREY	593468701	2
14	CIRCLIP SGA 20	593496301	2
15	SCREW M8X10	593495501	2
16	SCREW M8X25	593495201	4
17	FOAM	593393601	0.34m
18	PIPE PLUG	595631701	4
19	PROTECTION CAGE	595803601	1
20	POWER UNIT 4kW 3X400V MS	595802101	1
	POWER UNIT 4kW 3X230V CE JP	110539	1
	POWER UNIT 5.5kW 2X115V US	593455801	1
	POWER UNIT 3.7kW 3X230V CE NO	595633501	1
	POWER UNIT 4kW 3X400V ONE WAY	593462401	1
	POWER UNIT 2.2kW 1X230V CE	595638001	1
21	TUBE CONNECTION	593391601	3
22	SCREW M5X16	593505001	2
23	ELBOW FITTING M/F THREAD 1/4"	593389601	1
24	WATER VALVE 1/4"	593381001	1
25	SCREW M10X25	593501101	3
26	WASHER M10	593498501	3
27	VELCRO CLOSING 59/15 FEMALE	210057	6
28	WEIGHT 9.5KG LOWER	593461201	1
29	WEIGHT 9.5KG UPPER	593435401	2
30	SCREW M8X16	593500601	4
31	LIFT BRACKET	593408001	1
32	HOSE 2"	593478501	2x1.25m
33	HOSE CLAMP 2"	593452701	4
34	WATER TANK	595805801	1
35	FORK PIPE 50-50-2" THREAD	593475601	1
36	WASHER	593511901	2
37	SCREW M10X45	593506801	1

**HTC 500 Hose connection**



No.	Description	Art. No.	Qty
1	FORK PIPE 50x50x50	593376401	1
2	FORK PIPE 50x50x2" THREAD	593475601	1
3	PIPE CLAMP	593386301	1
4	CAMLOCK MALE 2" INSIDE THREAD	593460001	1

### HTC 500 Grinding head

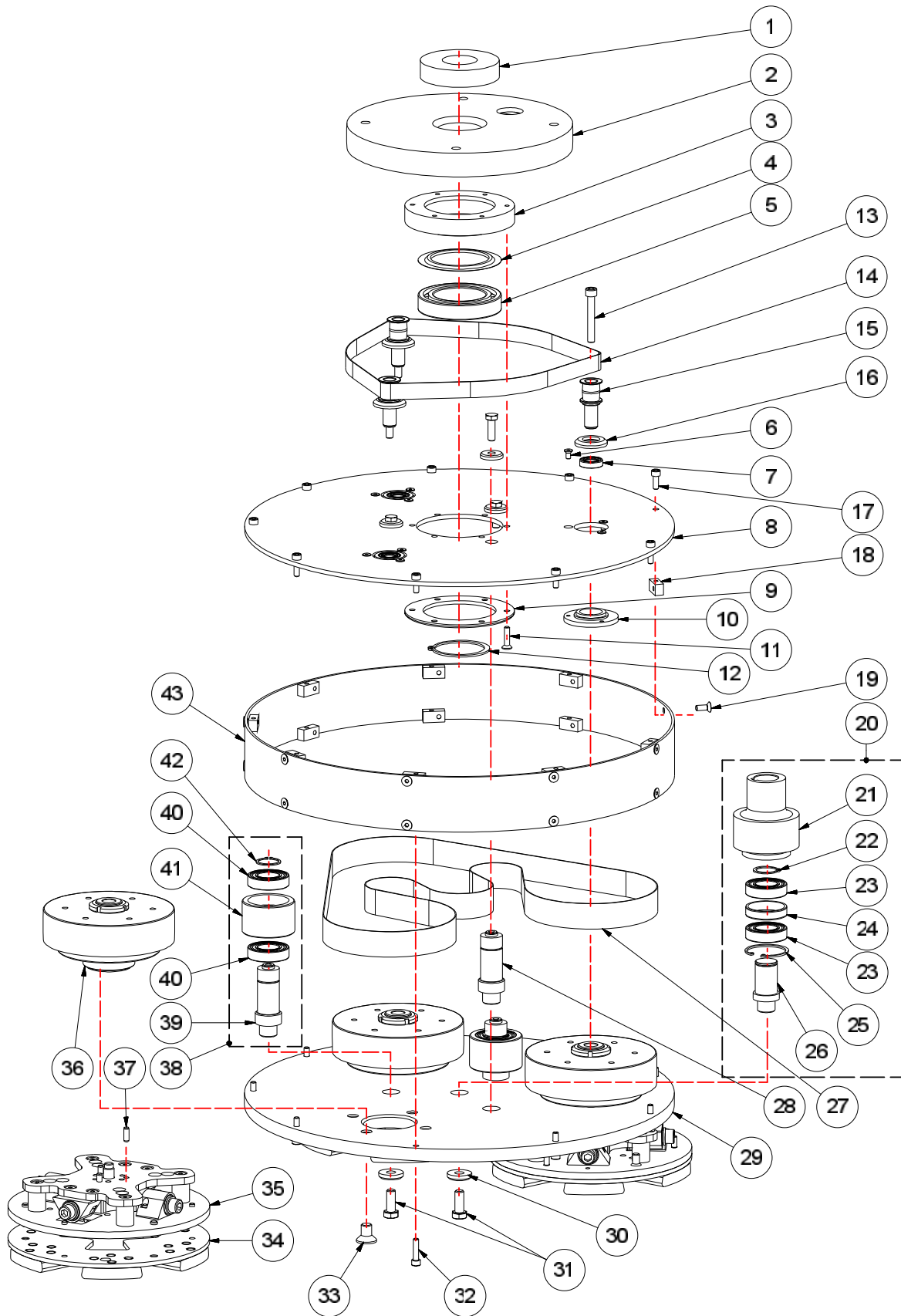


## HTC 500 Grinding head

Item	Description	Part no	Qty
1	WASHER M6	593496001	8
2	SCREW M6X10	593495401	8
3	COVER COMPLETE	593418501	1
4	HOSE 15/10MM	593388601	0.5m
5	VELCRO CLOSING MALE	593615501	2m
6	SHIMS	593529401	1
7	HINGE BRACKET	593624401	2
8	BUSHING	595693201	2
9	SLEEVE OUTER	593529501	2
10	SLEEVE INNER	593529601	2
11	SAFETY COVER BELT V.2 COMPLETE	593533201	2
12	SCREW 3.5X13	593508301	8
13	BRUSH STRIP	593443301	2x0.66m
14	SCREW M6X16	593507801	6
15	SCREW M10x40	593510501	2
16	WASHER M12	593499401	4
17	SCREW M12X35	593510901	4
18	MOTOR 4KW 3X400 EU	593456301	1
	MOTOR 4KW 3X230 EU 2X115 US	593460801	1
19	SPLASH GUARD	593412801	1



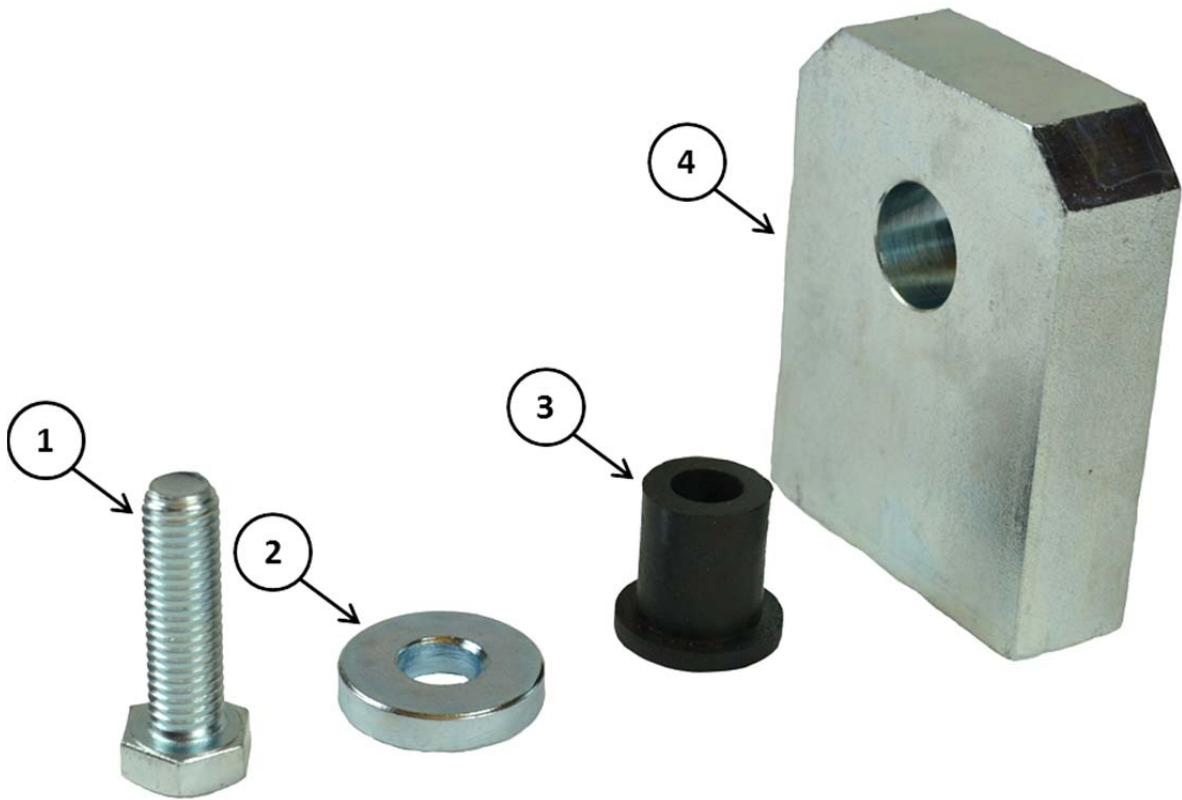
# HTC 500 Grinding head



## HTC 500 Grinding head

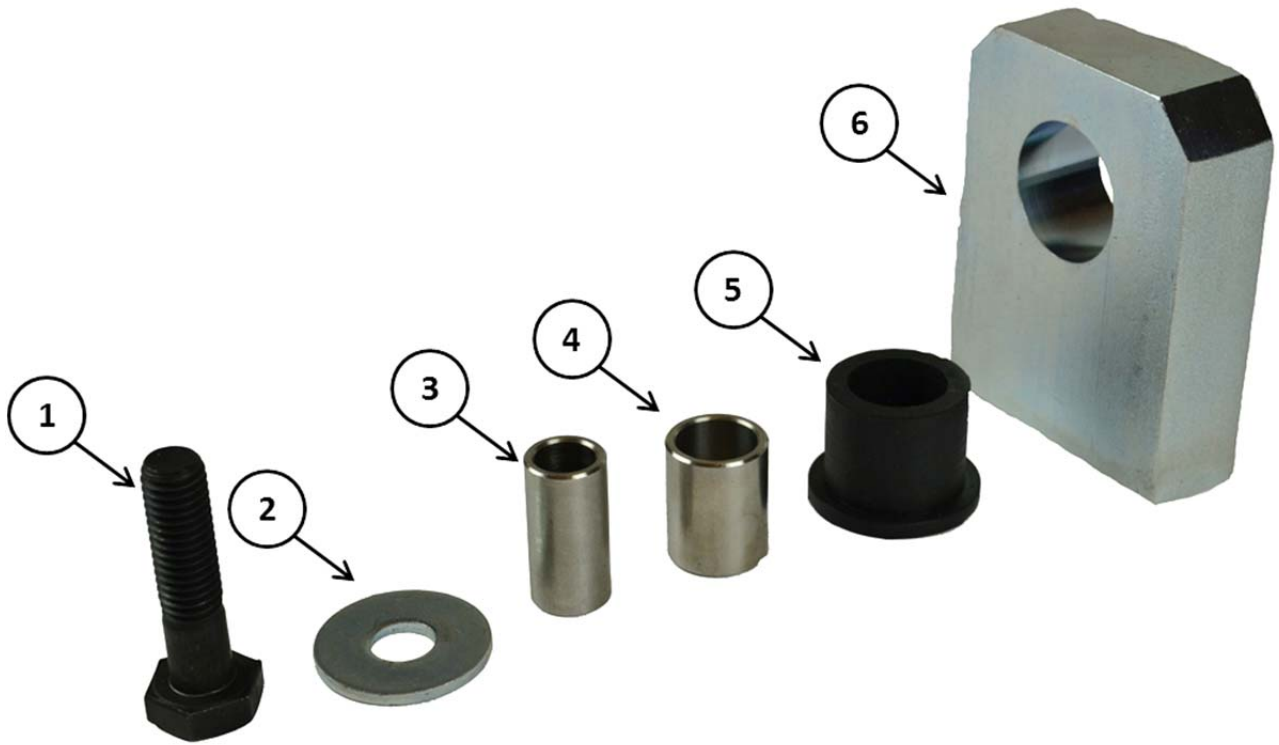
Item	Description	Part no	Qty
1	FOAM RING	593408401	1
2	MOTOR PLATE	593407901	1
3	HOUSING CENTRE	593403401	1
4	NILOS RING	593377701	1
5	BALL BEARING 6012	593382101	1
6	SCREW M5X10	593506601	9
7	SEALING 15X26X7	593379601	3
8	UPPER LID	593407801	1
9	COVER CENTER	593401901	1
10	SEAL COVER	593419801	3
11	SCREW M6X25	593507301	6
12	CIRCLIP SGA 60	593496501	1
13	SCREW M8X55	593506001	3
14	UPPER BELT 19x870	593426101	1
15	SHAFT TAP	593407201	3
16	GAMMA RING	593419901	3
17	SCREW M6X16	593500701	9
18	FIXING BOSS	593381901	18
19	SCREW M6X16	593507801	18
20	CENTER PULLEY COMPLETE	593420501	1
21	CENTER PULLEY	593408101	1
22	CIRCLIP SGA 25	593496801	1
23	BALL BEARING 6005	593381501	2
24	DISTANCE CENTERPULLEY	593418401	1
25	CIRCLIP SGH 47	593502201	1
26	SHAFT CENTERPULLEY	593418301	1
27	INNER BELT FLAT 30x1822	593381701	1
28	SHAFT PRESSWHEEL	593407001	1
29	LOWER COVER	593407101	1
30	WASHER M10	593498501	4
31	SCREW M10X25	593501101	4
32	SCREW M6X25	593497801	9
33	SCREW M12X20	593501801	12
34	TOOLHOLDER EZ 230 / 6	593319103	3
35	GRIND HOLDER CARDAN COMPL. 230	593439101	3
36	HUB PACKAGE	593420201	3
37	CYLINDER PIN	593507501	9
38	TENSIONING WHEEL COMPLETE	593420401	2
39	SHAFT PRESSWHEEL	593407001	1
40	BALL BEARING 6005	593381501	2
41	TENSIONING WHEEL	593408201	1
42	CIRCLIP SGA 25	593496801	1
43	BORDER HTC 500	593407701	1

**HTC 500 Hinge bracket V2 (2010-08-10).**



No.	Description	Part no	Qty
1	SCREW M10x35	593495601	1
2	WASHER M10	593498501	1
3	BUSHING	Discontinued	1
4	HINGE BRACKET Ø18MM	Discontinued	1
If the hole is Ø14MM use only the screw and the washer.			

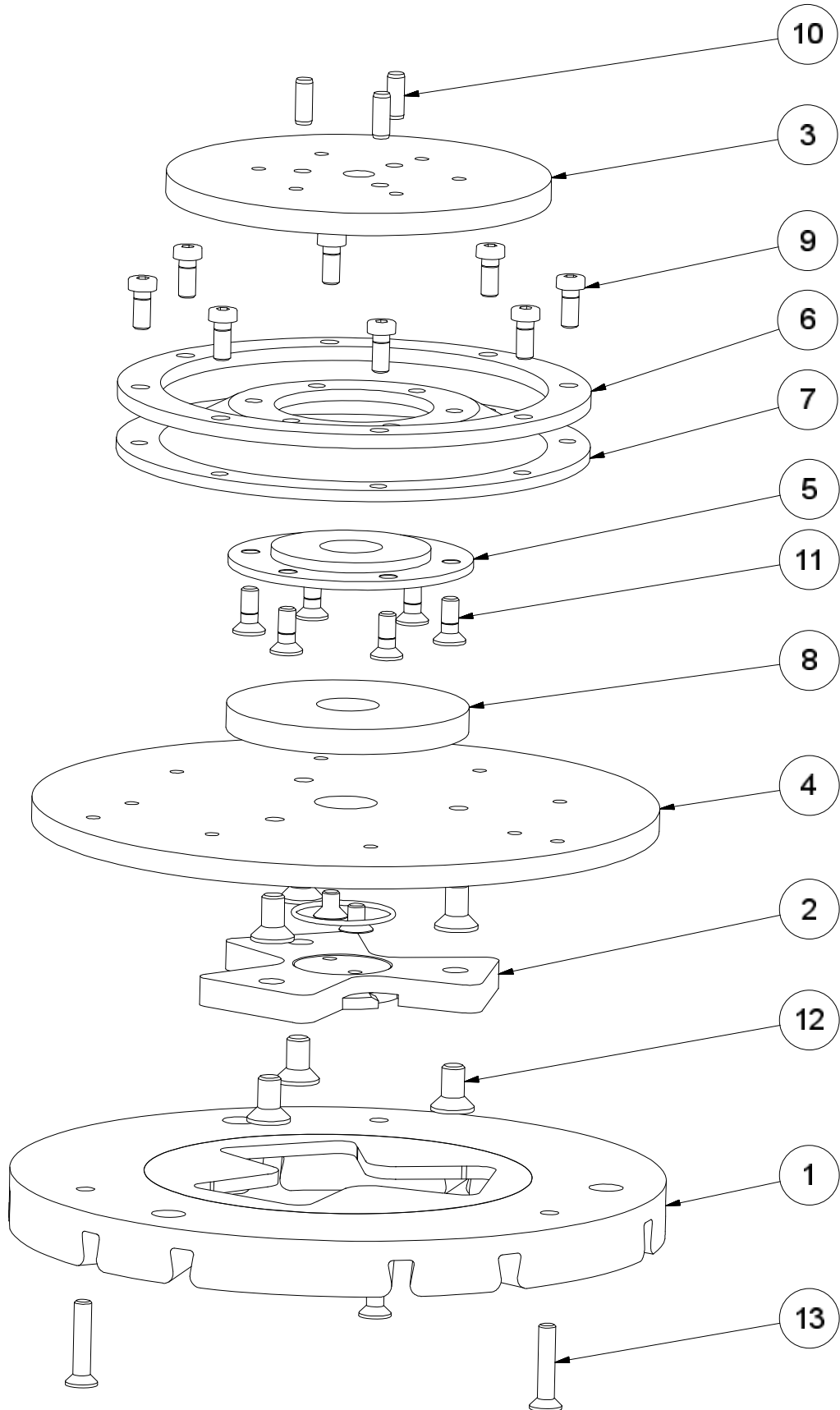
**HTC 500 Hinge bracket V3 (2012-04-26).**



**Hinge bracket kit 113714 - 2pcs/machine**

No.	Description	Part no	Qty
1	SCREW M10x40	593510501	1
2	WASHER M10	593511901	1
3	SLEEVE INNER	593529601	1
4	SLEEVE OUTER	593529501	1
5	BUSHING	593529901	1
6	HINGE BRACKET Ø26MM	593529801	1

### HTC 500 Grinding holder polycord

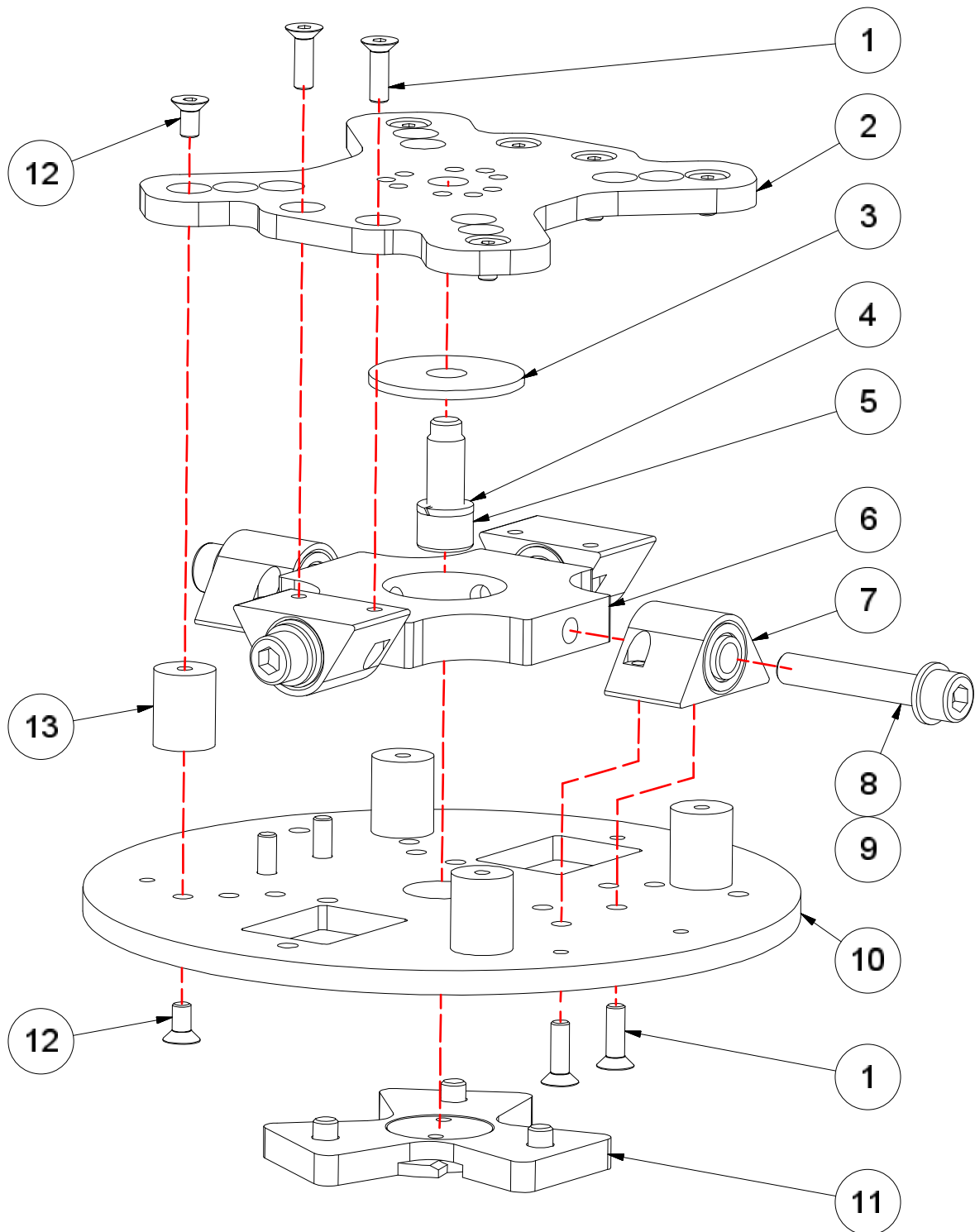


---

**HTC Grinding holder polycord**

Item	Description	Part no	Qty
1	TOOLHOLDER EZ 230 6	593319103	1
2	CROSS COMPLETE	593615201	1
3	GRIND HOLDER UPPER	593383801	1
4	GRIND HOLDER LOWER	593384001	1
5	POLYCORD HOLDER INNER	593397401	1
6	POLYCORD HOLDER OUTER	593383901	1
7	POLYCORD ROUND GREEN 168MM	593396901	2
8	SPRING	593420001	1
9	SCREW M6X14	593508001	8
10	CYLINDER PIN	593498901	3
11	SCREW M6X16	593507801	6
12	SCREW M6X16	593507801	3
13	SCREW M6X20	593497101	3

### HTC 500 Grinding holder cardan

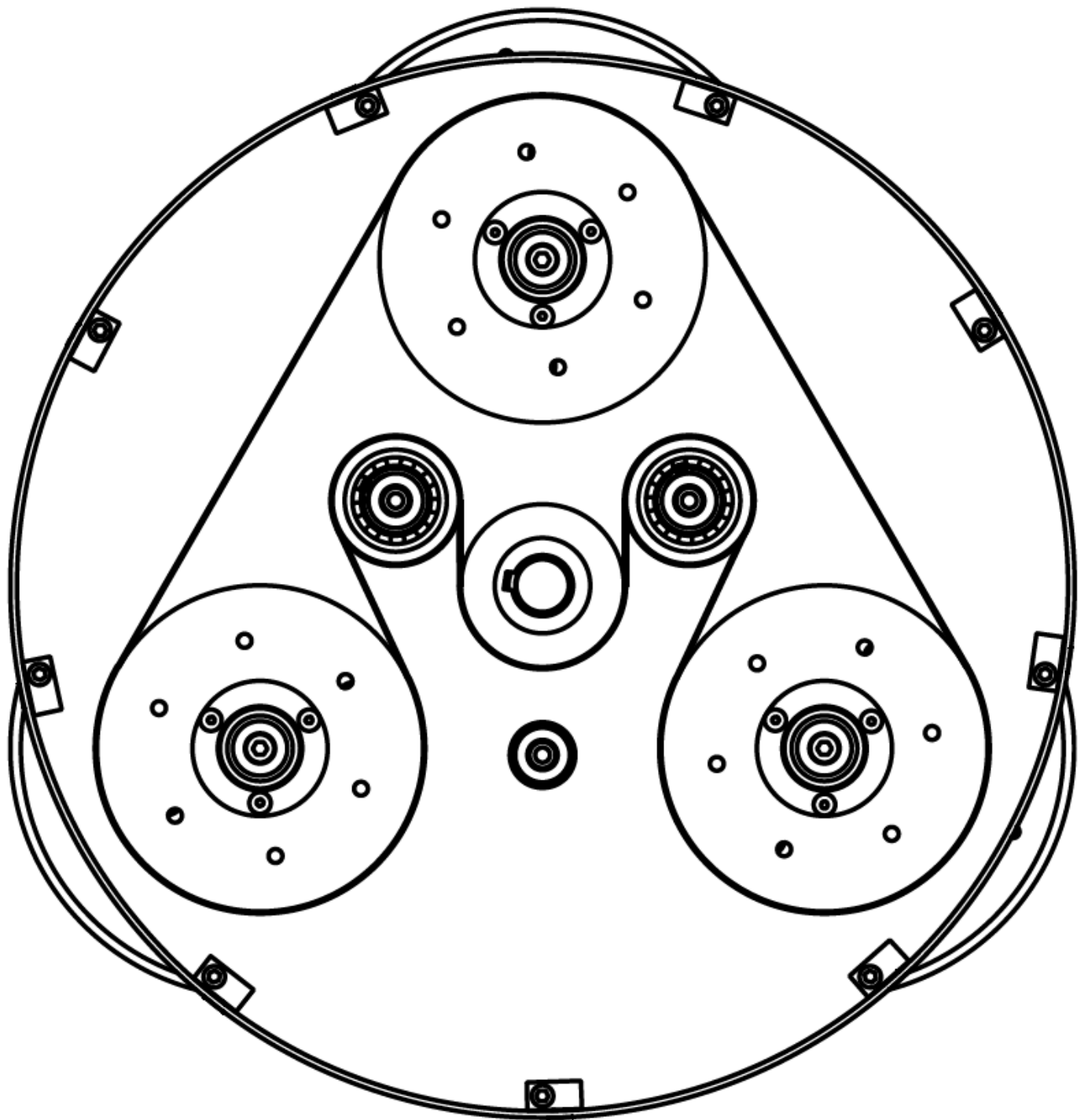


---

**HTC 500 grinding holder cardan**

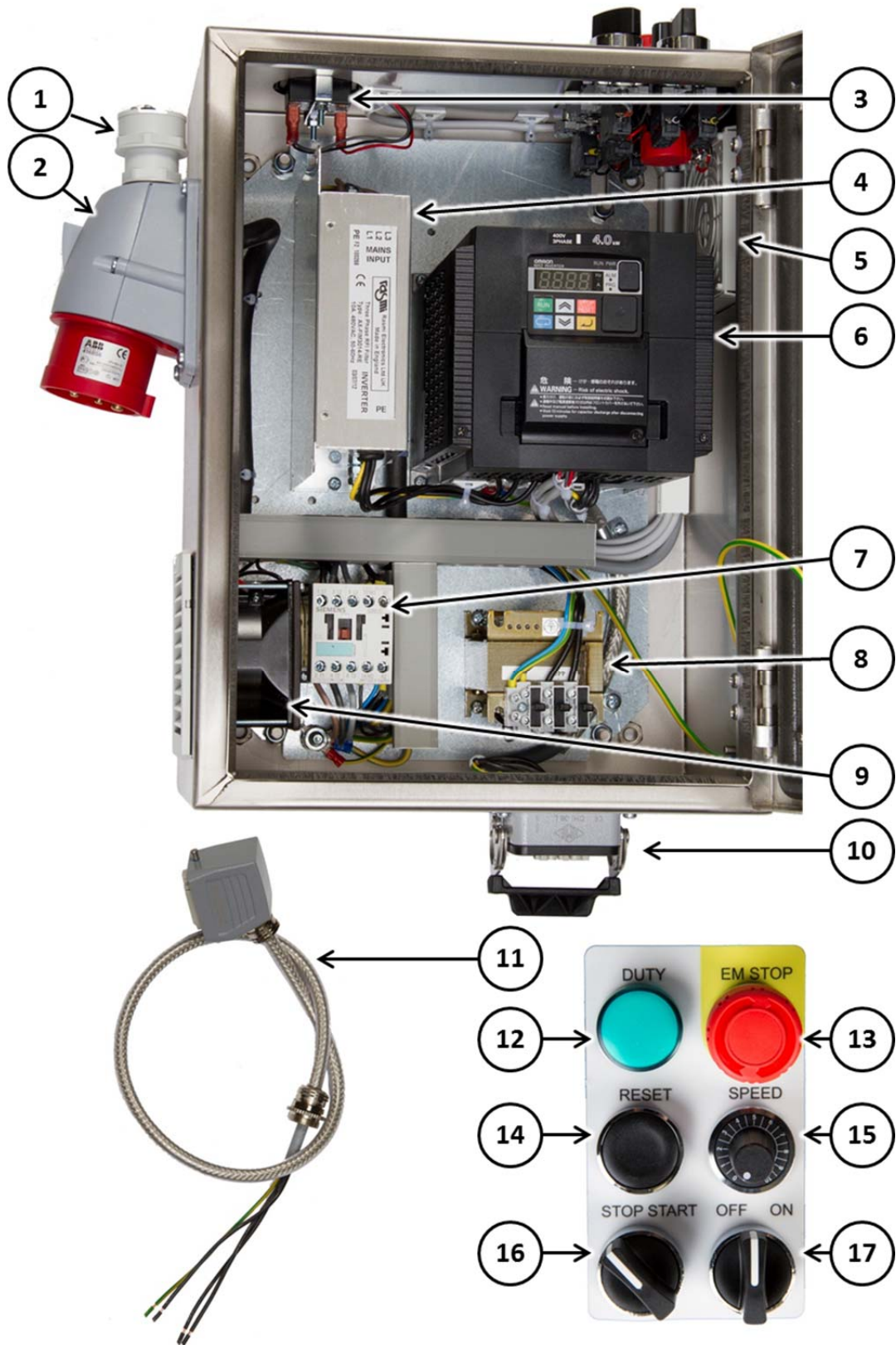
Item	Description	Part no	Qty
1	SCREW M6X20	593505101	8
2	UPPER GRIND HOLDER PLATE	593438201	1
3	WASHER	593438601	1
4	WASHER M10	593509901	1
5	SCREW MC6S M10X30 8.8 FZB	593504101	1
6	CARDAN CONNECTION	593438401	1
7	EAR WIDE COMPLETE	593718101	4
8	SCREW MC6S M10X60 12,9	593496601	4
9	WASHER M10	593499101	4
10	GRIND HOLDER PLATE	593438301	1
11	CROSS COMPLETE	593615901	1
12	SCREW M6X12	593508501	8
13	SHOCK ABSORBER 20x25 M6	595748401	4





BELT ORIENTATION - HTC 500

### HTC 500 Electrical 3x400v EU



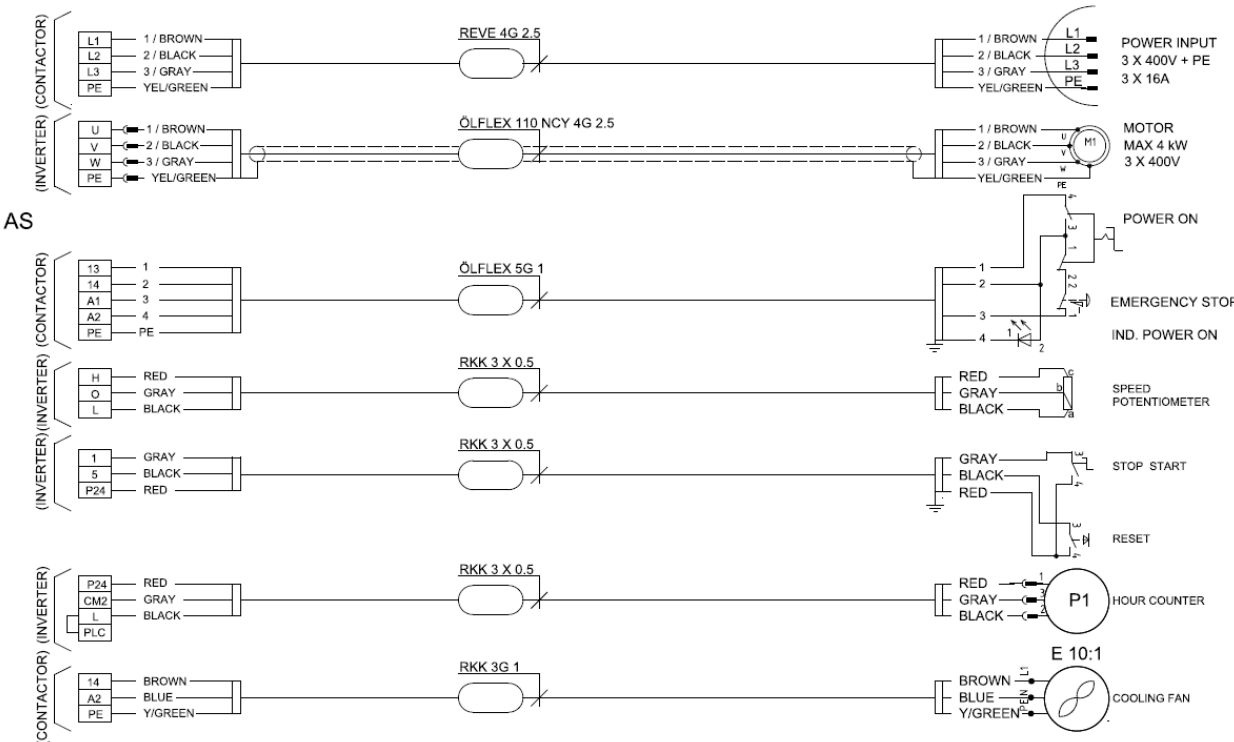
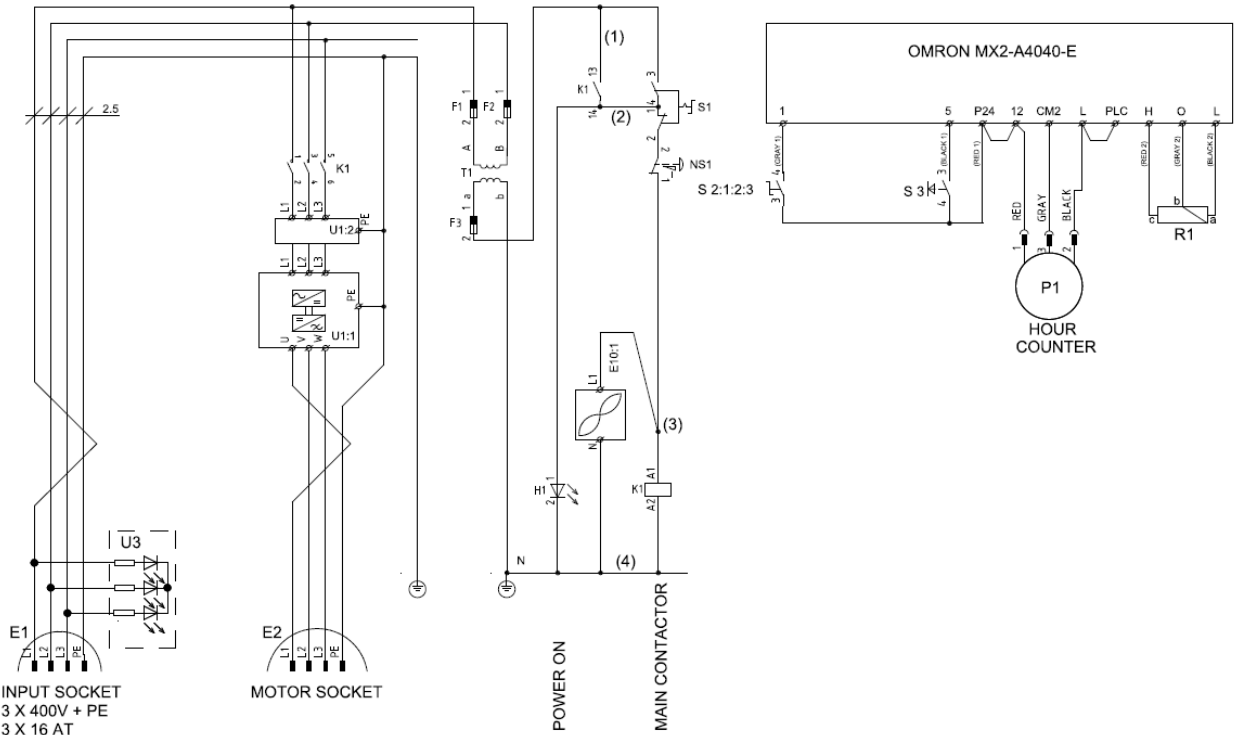
**HTC 500Electrical 3x400 EU**

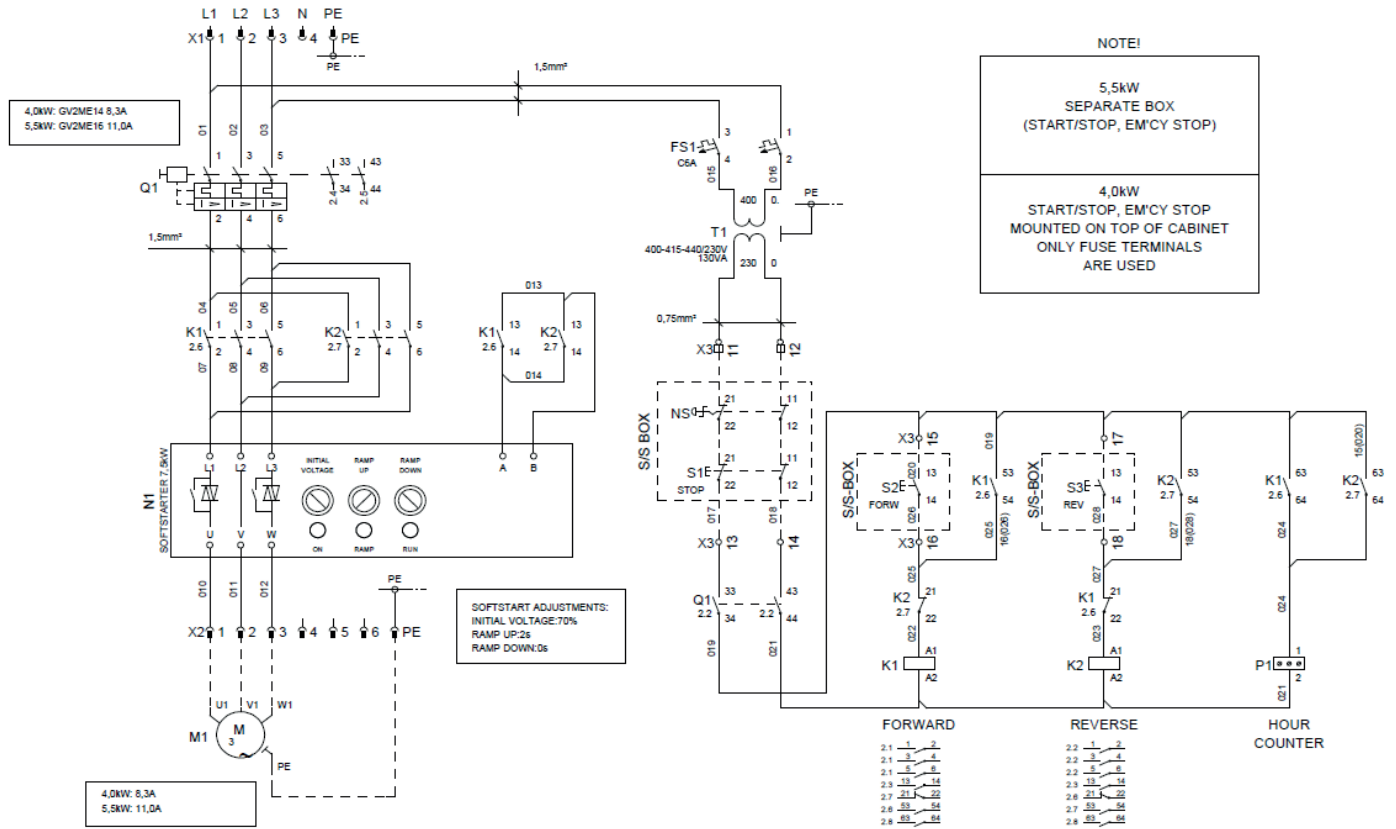
Item	Description	Part no	Qty
1	PHASE INDICATOR	593379101	1
2	POWER INLET	593395901	1
3	HOUR METER	593395301	1
4	EMC-FILTER	593458601	1
5	FILTER HOLDER	593553001	1
6	INVERTER	593458501	1
7	CONTACTOR	593393901	1
8	TRANSFORMER	593380601	1
	FUSE	595642001	3
9	FILTER FAN	593474901	1
	FILTER HOLDER	593553001	1
10	MOTOR CABLE INLET	593554501	1
11	MOTOR CABLE	593405701	1
12	LENS HEAD (GREEN)	593399501	1
	MOUNTING BASE	593614901	1
	LIGHT BLOCK	595785701	1
13	EMERGENCY STOP PRESS BUTTON	593398901	1
	MOUNTING BASE	593614901	1
	CONTACT BLOCK (NC)	593399701	1
14	PRESS BUTTON (RESET)	593399401	1
	MOUNTING BASE	593614901	1
	CONTACT BLOCK (NO)	593399601	1
15	POTENTIOMETER KNOB	593420701	1
	POTENTIOMETER	593398501	1
16	KNOB 2-POS (STOP/START)	593429901	1
	MOUNTING BASE	593614901	1
	CONTACT BLOCK (NO)	593464501	1
17	KNOB 3-POS (OFF/ON)	593398201	1
	MOUNTING BASE	593614901	1
	CONTACT BLOCK (NO)	593399601	1
	CONTACT BLOCK (NC)	593399701	1

**MODIFIED PARAMETERS**

MENUE	PARAMETER	VALUE
F002	ACC. TIME	4S
F003	DEC. TIME	4S
A004	MAX FREQ.	90Hz
A011	FREQ. MIN	20Hz
A012	FREQ. MAX	95Hz
A044	V/F CHARACT.	3
b002	ALLOW. U-VOLT	5.0
b083	SW. FREQUE.	10

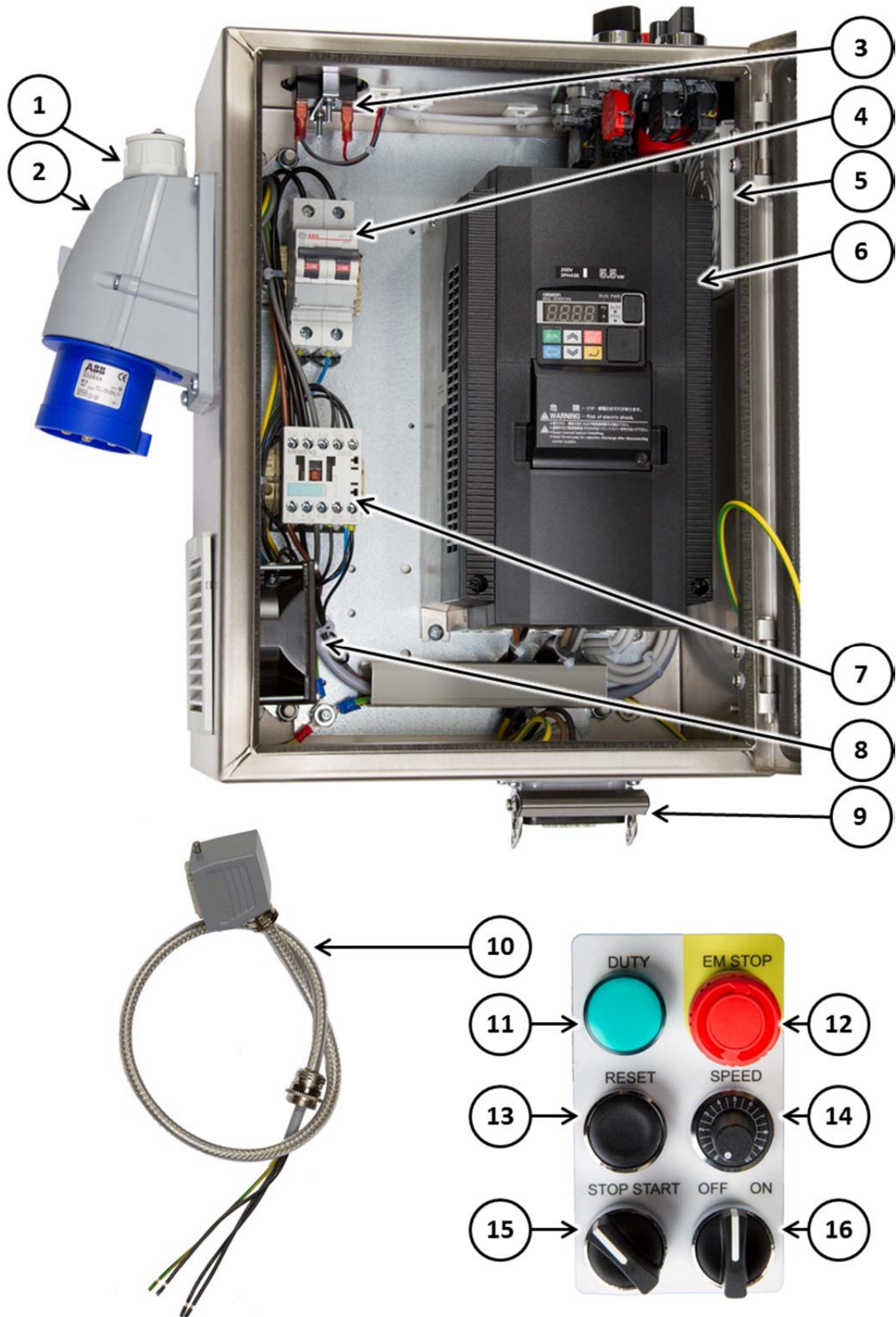
MENUE	PARAMETER	VALUE
b092	COOLING FAN	0 (ON)
C004	TERMNAL 4	13(USP)
C005	TERMNAL 5	18 (RS)
C014	TERMNAL 4 ACT.	1 (NC)
C021	TERMNAL 11	1 (FA1)
C022	TERMNAL 12	0 (RUN)
H005	MOTOR SPEED CONST.	10
b031	SOFT LOCK	03





Item	Description	Part no	QTY
N1	SOFT START SIEMENS 5.5kW	593 40 05-01	1
	SOFT START PE SOLSTART 5.5kW	593 42 50-01	1

HTC 500 Electrical 2x115v US



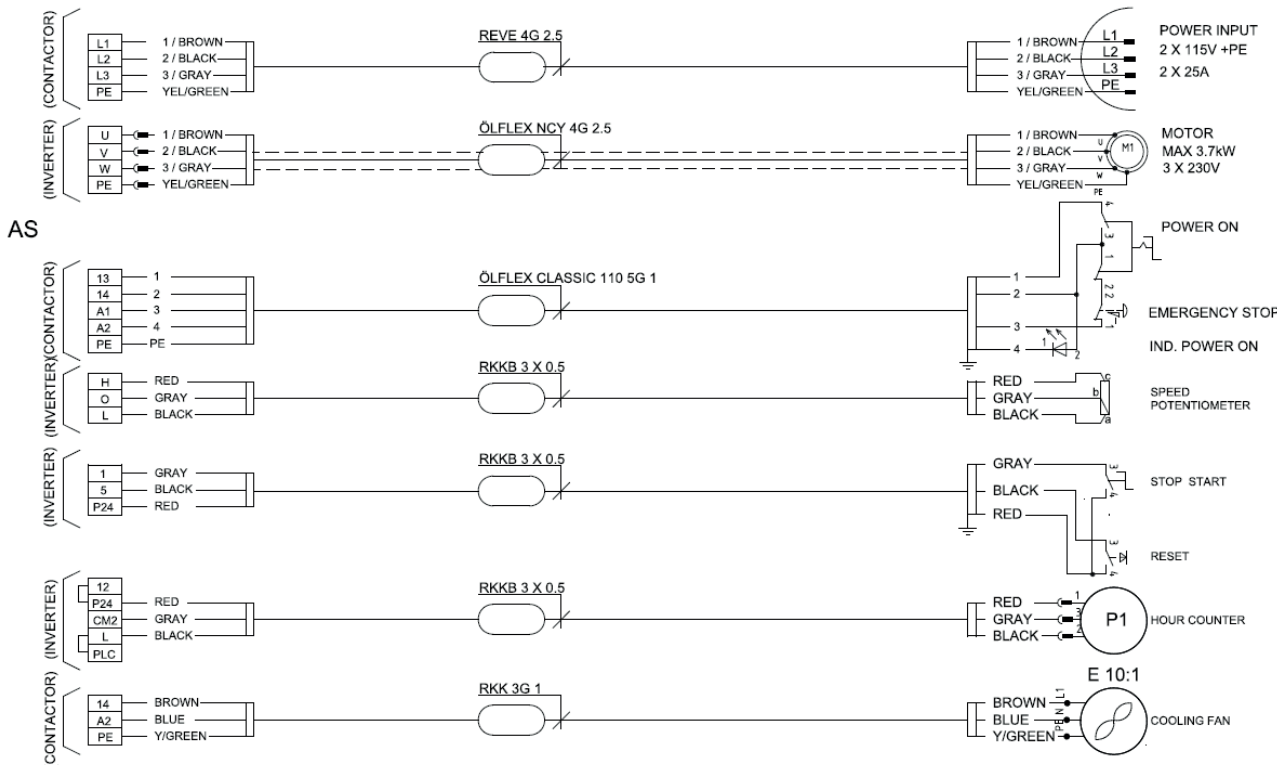
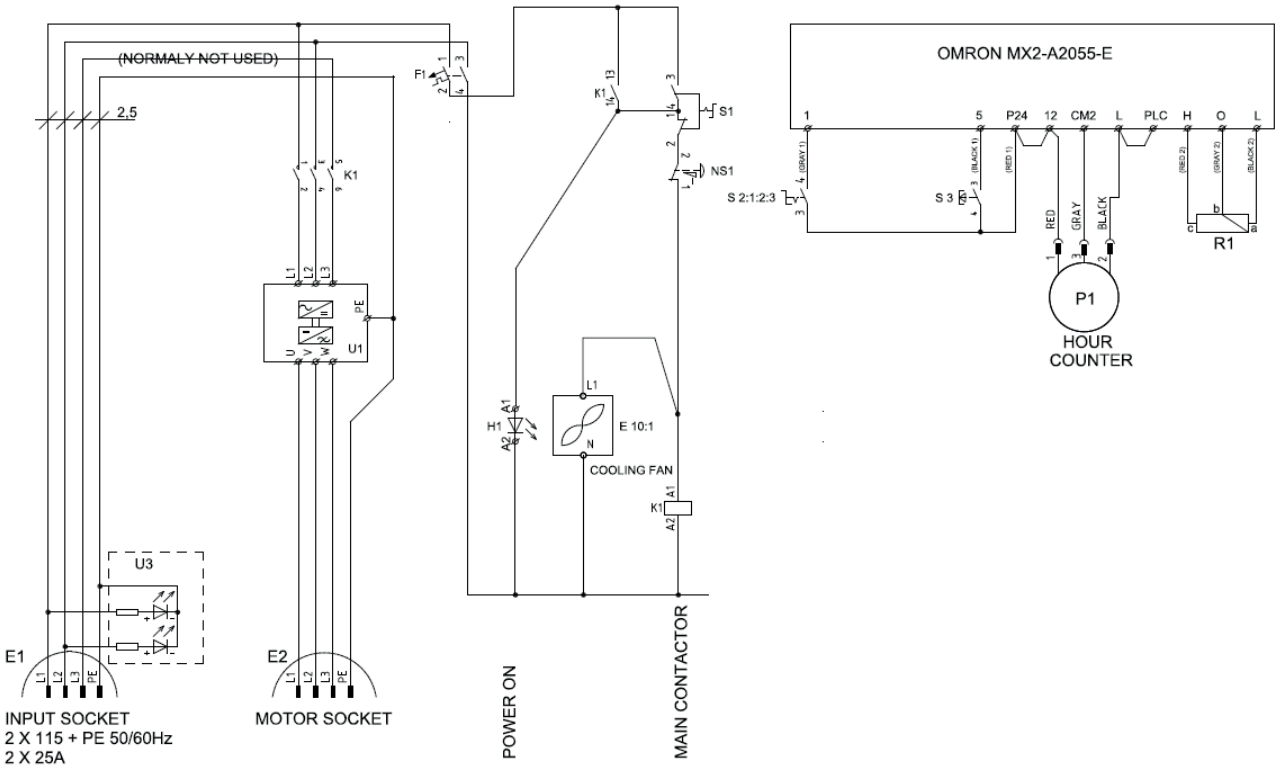
**HTC 500Electrical 2x115v US**

Item	Description	Part no	Qty
1	PHASE INDICATOR	593377601	1
2	POWER INLET	593376301	1
3	HOUR METER	593395301	1
4	FUSE 2POL 2A	595733401	1
5	FILTER HOLDER	593553001	1
6	INVERTER	593554001	1
7	CONTACTOR	593399801	1
8	FILTER FAN	593474901	1
	FILTER HOLDER	593553001	1
9	MOTOR CABLE INLET	595736901	1
10	MOTOR CABLE	593405701	1
11	CAP FOR DUTY LAMP	593399501	1
	MOUNTING BASE	593614901	1
	LIGHT BLOCK	595785701	1
12	EMERGENCY STOP PRESS BUTTON	593398901	1
	MOUNTING BASE	593614901	1
	CONTACT BLOCK (NC)	593399701	1
13	PRESS BUTTON (RESET)	593399401	1
	MOUNTING BASE	593614901	1
	CONTACT BLOCK (NO)	593399601	1
14	POTENTIOMETER KNOB	593420701	1
	POTENTIOMETER	593398501	1
15	KNOB 2-POS (STOP/START)	593429901	1
	MOUNTING BASE	593614901	1
	CONTACT BLOCK (NO)	593464501	1
16	KNOB 3-POS (ON/OFF)	593398201	1
	MOUNTING BASE	593614901	1
	CONTACT BLOCK (NO)	593399601	1
	CONTACT BLOCK (NC)	593399701	1

**MODIFIED PARAMETERS**

MENUE	PARAMETER	VALUE
F002	ACC. TIME	4S
F003	DEC. TIME	4S
A004	MAX FREQ.	90Hz
A011	O-L INPUT MIN.	20Hz
A012	O-L INPUT MAX	90Hz
A044	V/F CHARACTER.	3 (SLV)
b002	ALLOWABLE U-V	5.0 s

b022	OV.L RESTRICT.	25 A
MENUE	PARAMETER	VALUE
b092	COOLING FAN	0 (ON)
C004	TERMNAL 4 (FUNC.)	13(USP)
C005	TERMNAL 5 (FUNC.)	18 (RS)
C014	TERMNAL 4 (ACT.)	1 (NC)
H005	MOTOR SPEED CONST.	10
b031	SOFT LOCK	02

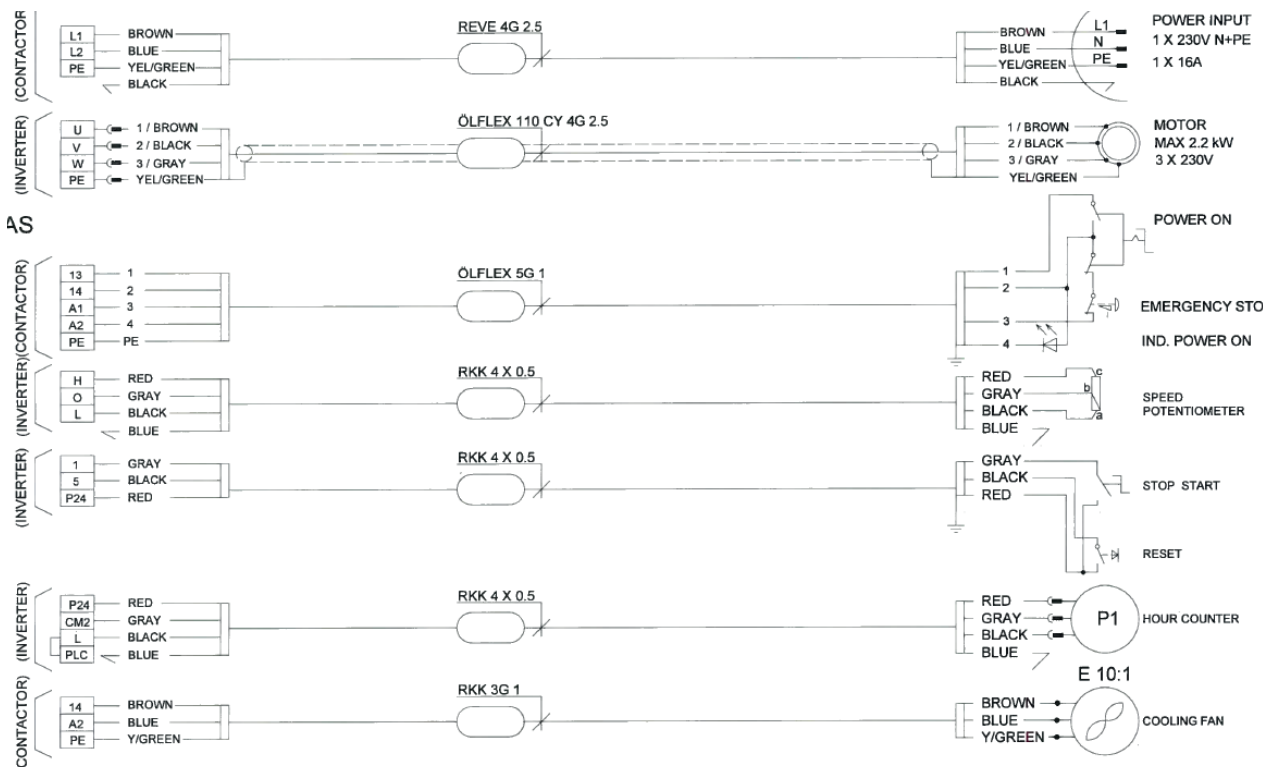
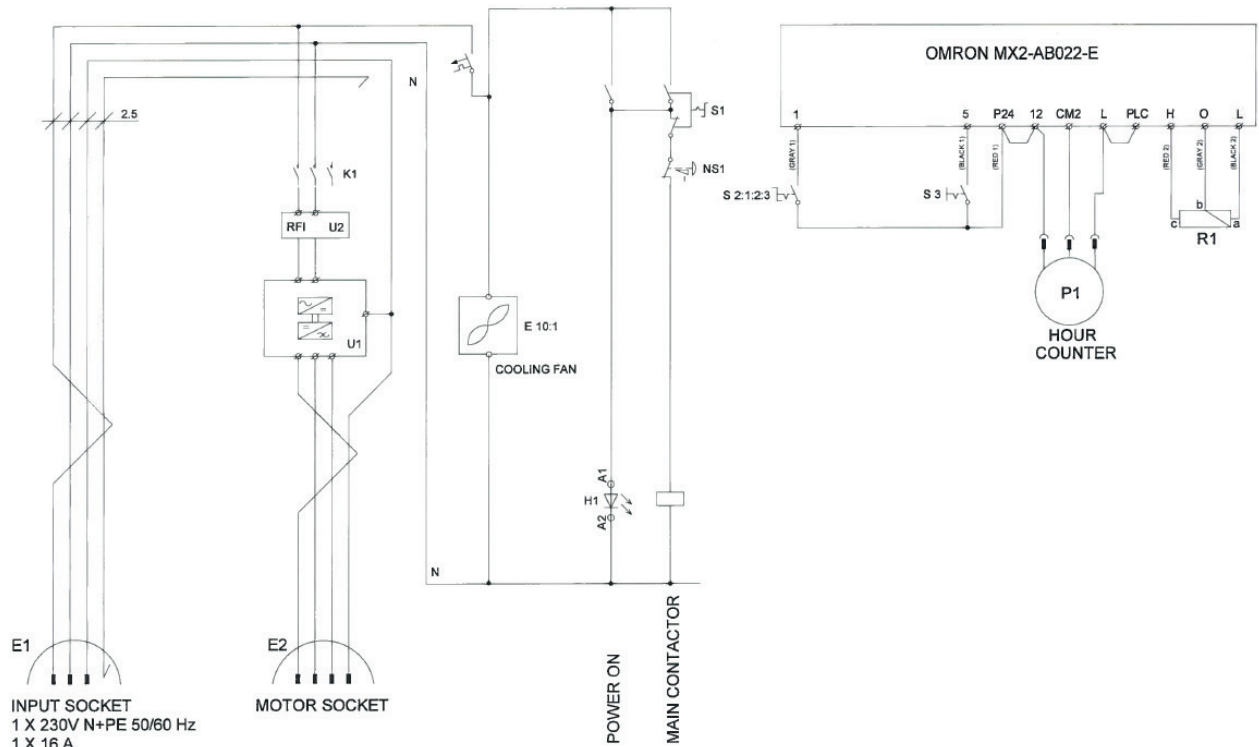




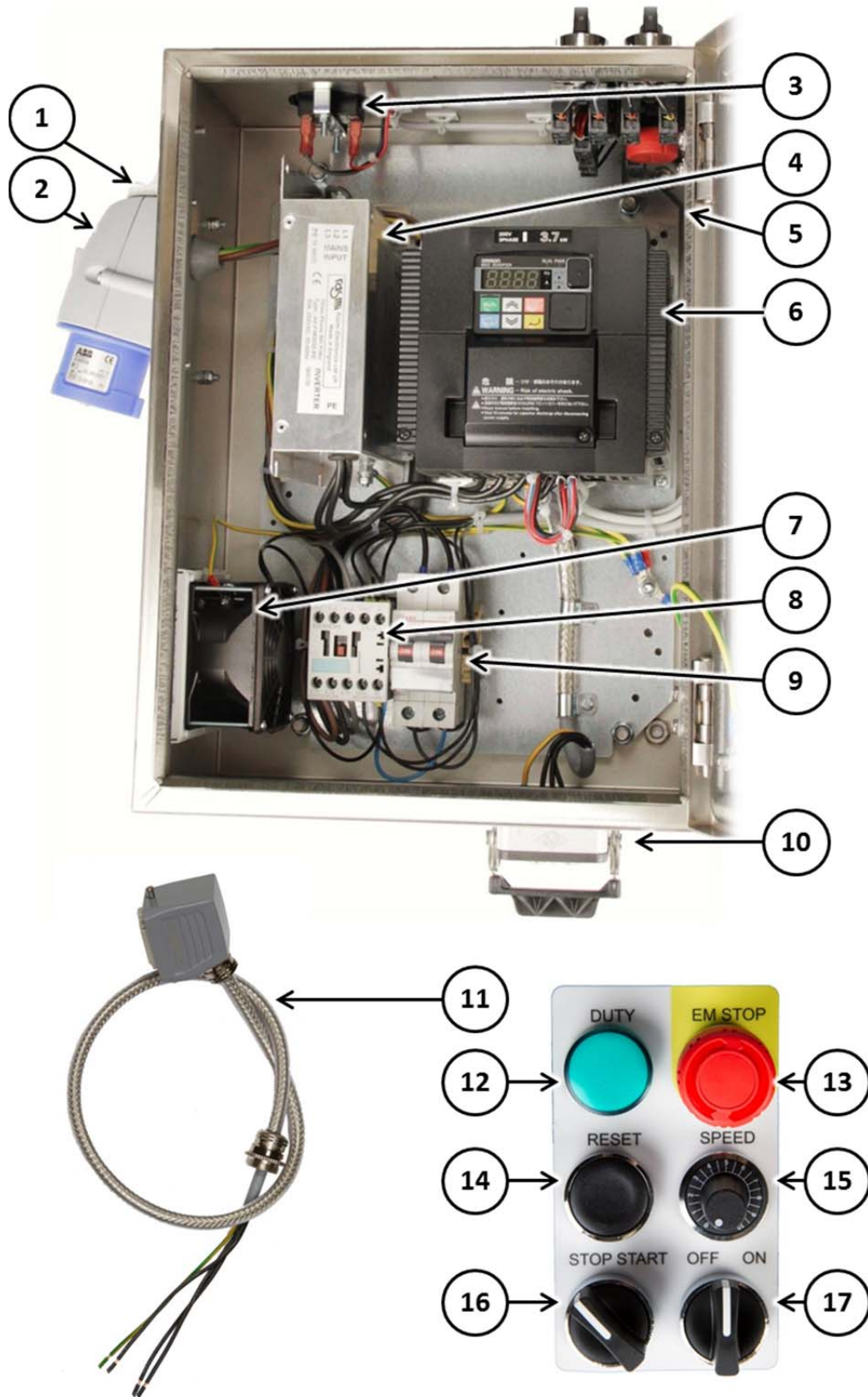
**MODIFIED PARAMETERS**

MENUE	PARAMETER	VALUE
F002	ACC. TIME	4S
F003	DEC. TIME	4S
A004	MAX FREQ.	90Hz
A011	EXT. FR START	20Hz
A012	EXT. FR END	90Hz
A044	V/F CHARACT.	3 (SLV)
b002	ALLOWABLE U-V	5.0 s
b022	OV.L RESTRICT.	16 A

MENUE	PARAMETER	VALUE
b092	COOLING FAN	0 (ON)
C004	TERMNAL 4 (FUNC.)	13(USP)
C005	TERMNAL 5 (FUNC.)	18 (RS)
C014	TERMNAL 4 (ACT.)	1 (NC)
C021	11 OUTPUT	FA1
C022	12 OUTPUT	RUN
b031	SOFT LOCK	02



HTC 500 Electrical 3x230v NO



**HTC 500 Electrical 3x230v NO**

Item	Description	Part no	Qty
1	PHASE INDICATOR	593625901	1
2	POWER INLET	10449	1
3	HOUR METER	593395301	1
4	EMC FILTER	593554101	1
5	FILTER HOLDER	593553001	1
6	INVERTER	593472501	1
7	FILTER FAN	593474901	1
	FILTER HOLDER	593553001	1
8	CONTACTOR	593399801	1
9	FUSE 2POL 2A	595733401	1
10	MOTOR CABLE INLET	595736501	1
11	MOTOR CABLE	593405701	1
12	CAP FOR DUTY LAMP	593399501	1
	MOUNTING BASE	593614901	1
	LIGHT BLOCK	595785701	1
13	EMERGENCY STOP PRESS BUTTON	593398901	1
	MOUNTING BASE	593614901	1
	CONTACT BLOCK (NO)	593399601	1
14	PRESS BUTTON (RESET)	593399401	1
	MOUNTING BASE	593614901	1
	CONTACT BLOCK (NO)	593399601	1
15	POTENTIOMETER KNOB	593420701	1
	POTENTIOMETER	593398501	1
16	KNOB 2-POS (STOP/START)	593429901	1
	MOUNTING BASE	593614901	1
	CONTACT BLOCK (NO)	593464501	1
17	KNOB 3-POS (ON/OFF)	593398201	1
	MOUNTING BASE	593614901	1
	CONTACT BLOCK (NO)	593399601	1
	CONTACT BLOCK (NC)	593399701	1

**MODIFIED PARAMETERS**

MENUE	PARAMETER	VALUE
F002	ACC. TIME	4S
F003	DEC. TIME	4S
A004	MAX FREQ.	90Hz
A011	FREQ. MIN	20Hz
A012	FREQ. MAX	90Hz
A044	V/F CHARACT.	3 (SLV)
b002	ALLOWABLE U-V	5.0 s
b022	OV.L RESTRICT.	24 A

MENUE	PARAMETER	VALUE
b092	COOLING FAN	0 (ON)
C004	TERMNAL 4 (FUNC.)	13(USP)
C005	TERMNAL 5 (FUNC.)	18 (RS)
C014	TERMNAL 4 (ACT.)	1 (NC)
C021	TERMINAL 11 (FUNC.)	1 (FA1)
C022	TERMINAL 12 (FUNC.)	0 (RUN)
H005	MOTOR SPEED RESP.	10
b031	SOFT LOCK	02

