



SPARE PARTS

HTC GL 400 V.2

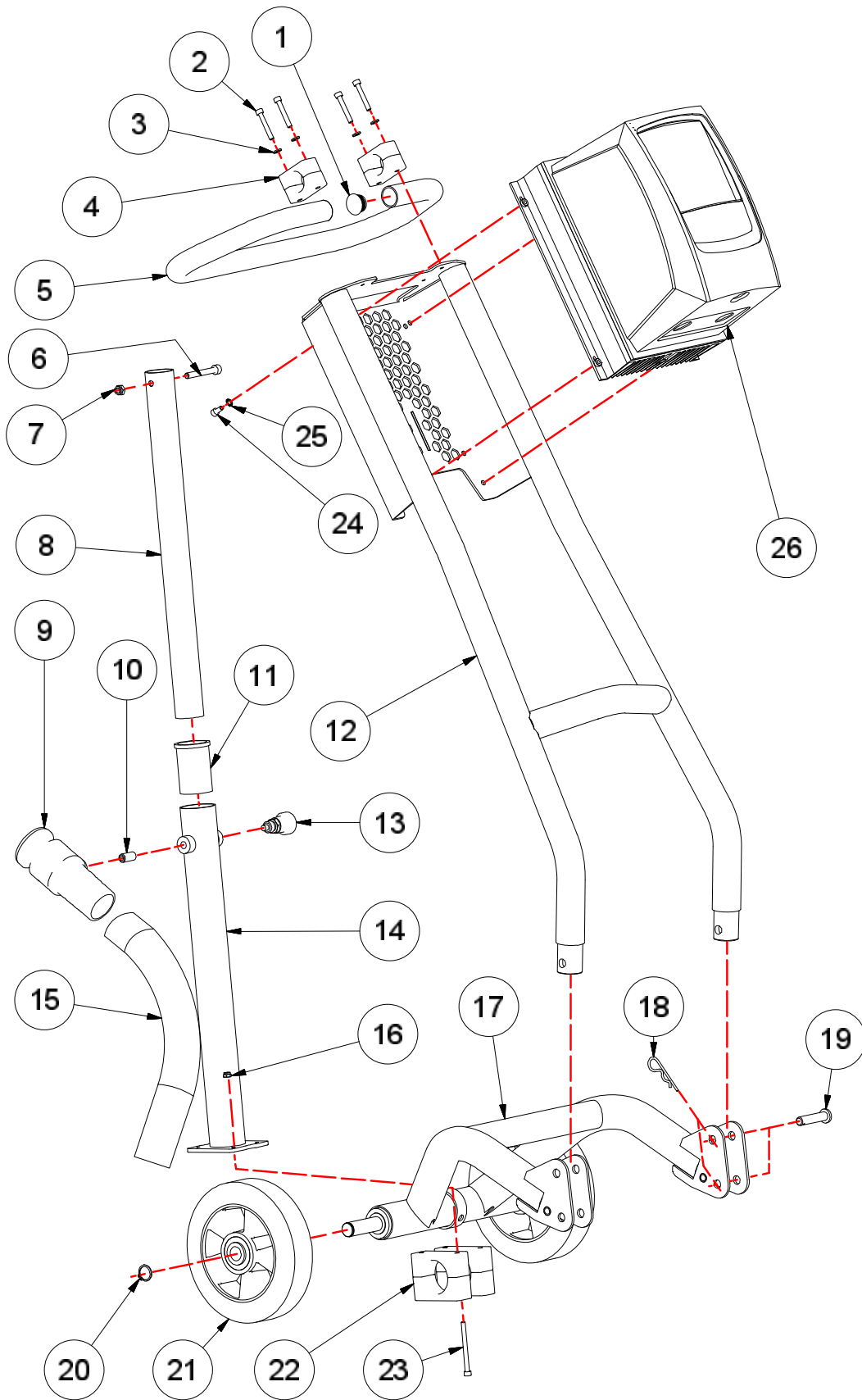
Translation of manual in original language



Table of contents

Greyline 400 V.2 Chassis 2
Greyline 400 V.2 Grinding head 4
Greyline 400 V.2 Grinding holder 6
Greyline V.2 Electrical – 1x230V 4kW - 593548501..... 8

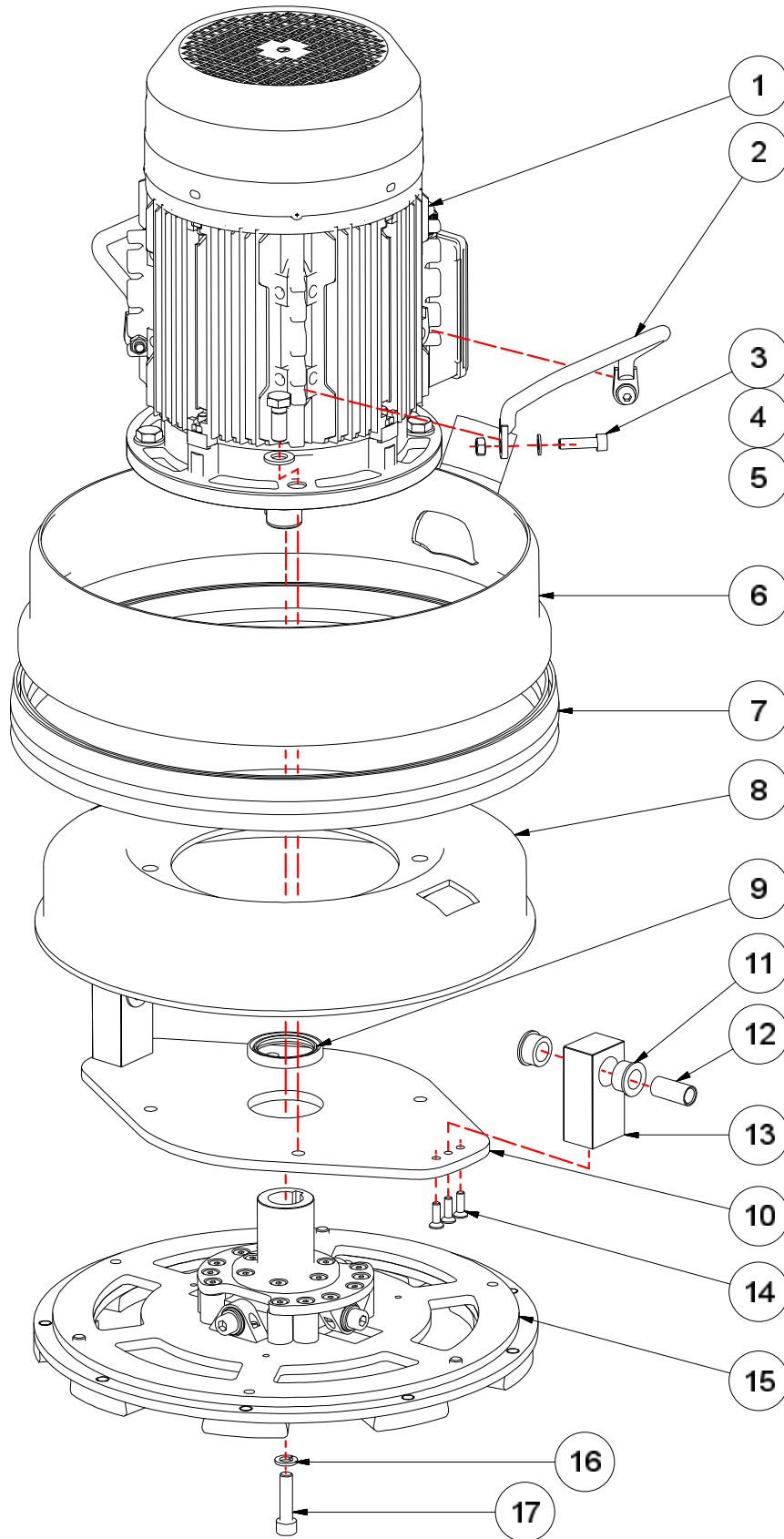
Greyline 400 V.2 Chassis



Greyline 400 V.2 Chassis

Item	Description	Part no	Qty
1	PIPE PLUG	593628901	2
2	SCREW M6X40	593630301	4
3	WASHER M6	593496001	4
4	PIPE CLAMP	593456701	4
5	CHASSIS HANDLE	593519401	1
6	SCREW M8X60	593500301	1
7	LOCK NUT M8	593499801	1
8	CHASSIS POSITIONER INNER TUBE	593519301	1
9	CAMLOCK MALE 2"	593460401	1
10	P6SS M12X25	593511201	1
11	CHASSIS POSITIONER GUIDE BUSH.	593524201	1
12	UPPER CHASSI	593532101	1
13	ADJUSTMENT BOLT	593456801	1
14	CHASSIS POSITIONER	593524101	1
15	HOSE 2"	113521	1
16	LOCK NUT M6	593500001	4
17	LOWER CHASSIS	593519201	1
18	LOCKING CLIP	593510801	4
19	PIN 12X55	593510701	4
20	CIRCLIP SGA 20	593496301	2
21	WHEEL	593408701	2
22	PIPE CLAMP	595633801	4
23	SCREW M6X70	593510201	4
24	SCREW M6X12	593500701	4
25	WASHER M6	593511001	4
26	POWER UNIT GL 1X230V 4KW	593548501	1

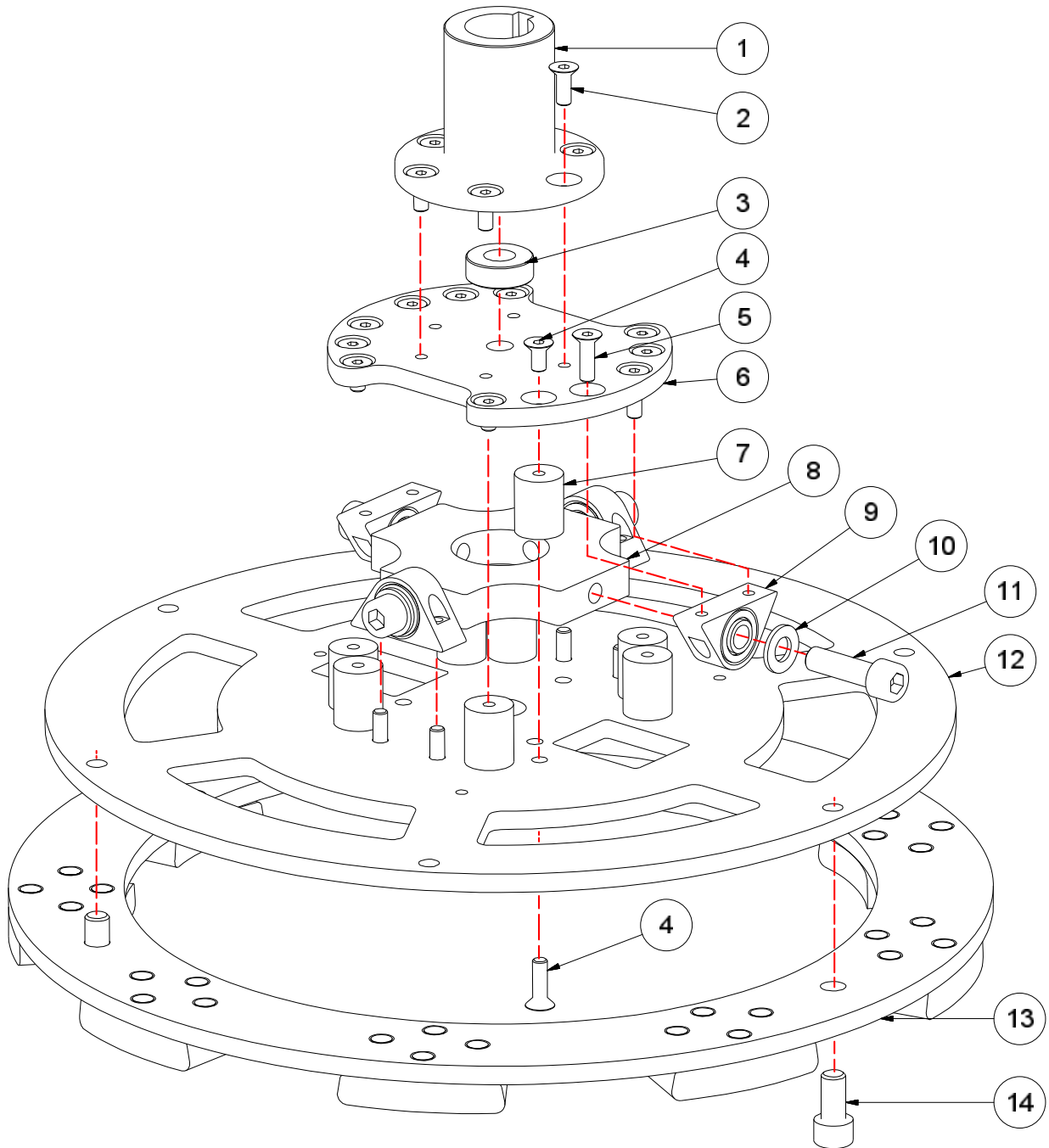
Greyline 400 V.2 Grinding head



Greyline 400 V.2 Grinding head

Item	Description	Part no	Qty
1	MOTOR 4KW	593555501	1
2	LIFT HANDLE	593532701	2
3	SCREW M8X30	593499601	4
4	WASHER M8	593500401	4
5	NUT M8	593504701	4
6	DUST COVER	593535601	1
7	BRUSH STRIP	593446101	1.33M
8	COVER GUIDE	593520501	1
9	SEALING	593416701	1
10	MOTOR PLATE	595695301	1
11	RUBBER BUSHING	593520901	4
12	SLEEVE BUSHING	593519101	2
13	HINGE BRACKET	593519601	2
14	SCREW M6X16	593507801	6
15	GRIND HOLDER CARDAN COMPLETE	593441101	1
16	WASHER M10	593509901	1
17	SCREW M10x40	595678001	1

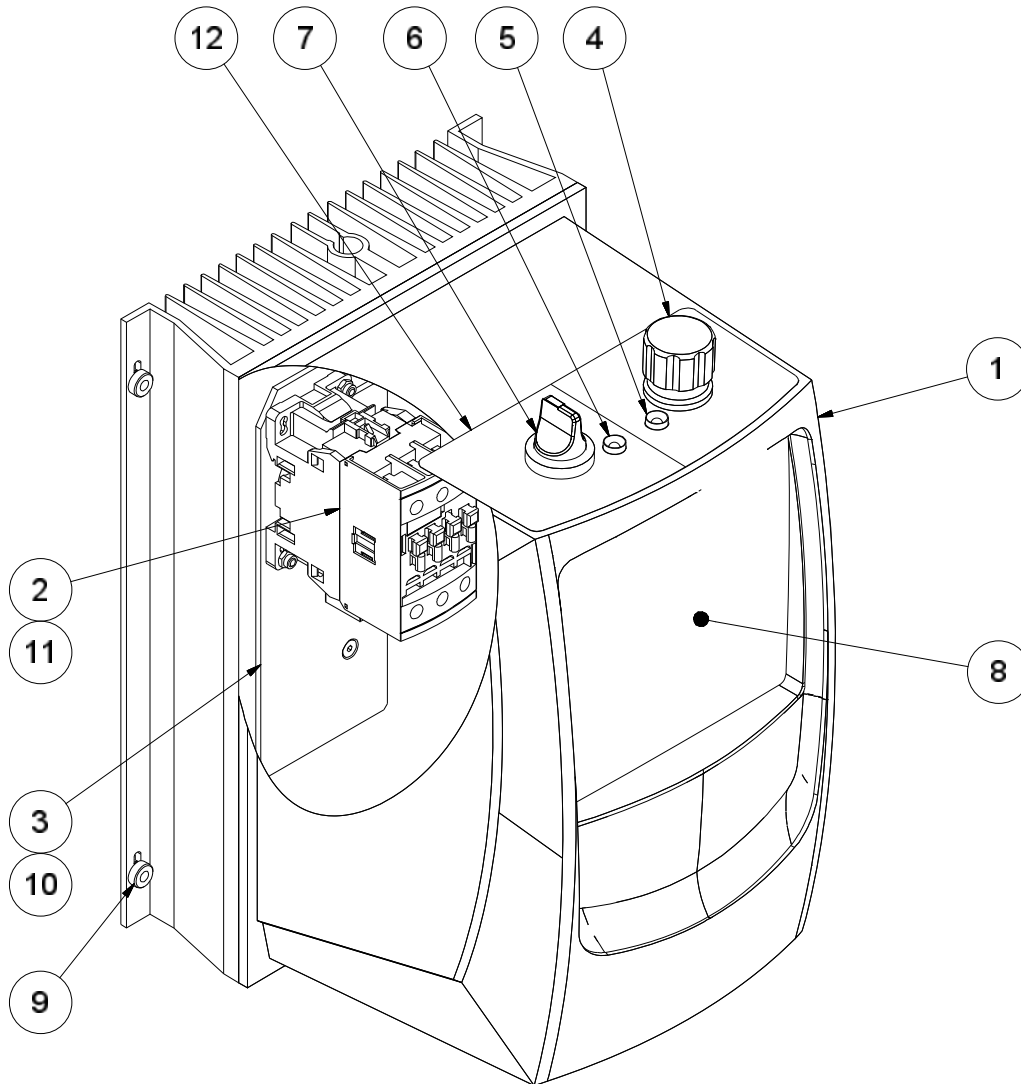
Greyline 400 V.2 Grinding holder



Greyline 400 V.2 Grinding holder

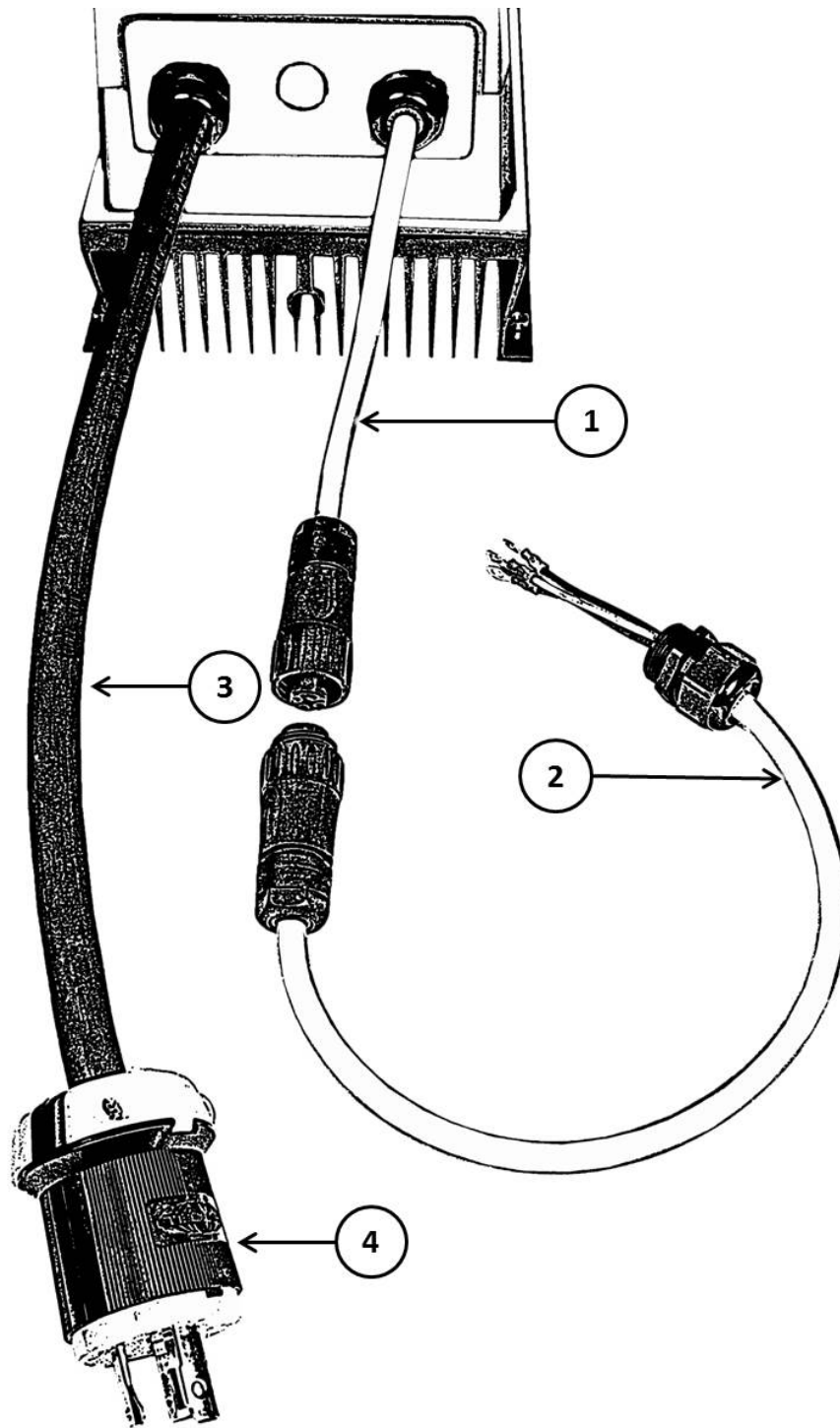
Item	Description	Part no	Qty
1	HUB	593445601	1
2	SCREW M6X16	593507801	6
3	SETRING	593442201	1
4	SCREW M6X12	593508501	16
5	SCREW M6X20	593505101	8
6	UPPER GRIND HOLDER PLATE	593445301	1
7	SHOCK ABSORBER	595748401	8
8	CARDAN CONNECTION	593438401	1
9	EAR BUSHING CMPL.	593616401	4
10	BRB M10	593499101	4
11	SCREW M10X35	593508101	4
12	LOWER GRIND HOLDER PLATE	593440401	1
13	TOOL HOLDER	593319106	1
14	SCREW M10X25	593500501	3

Greyline V.2 Electrical – 1x230V 4kW - 550226

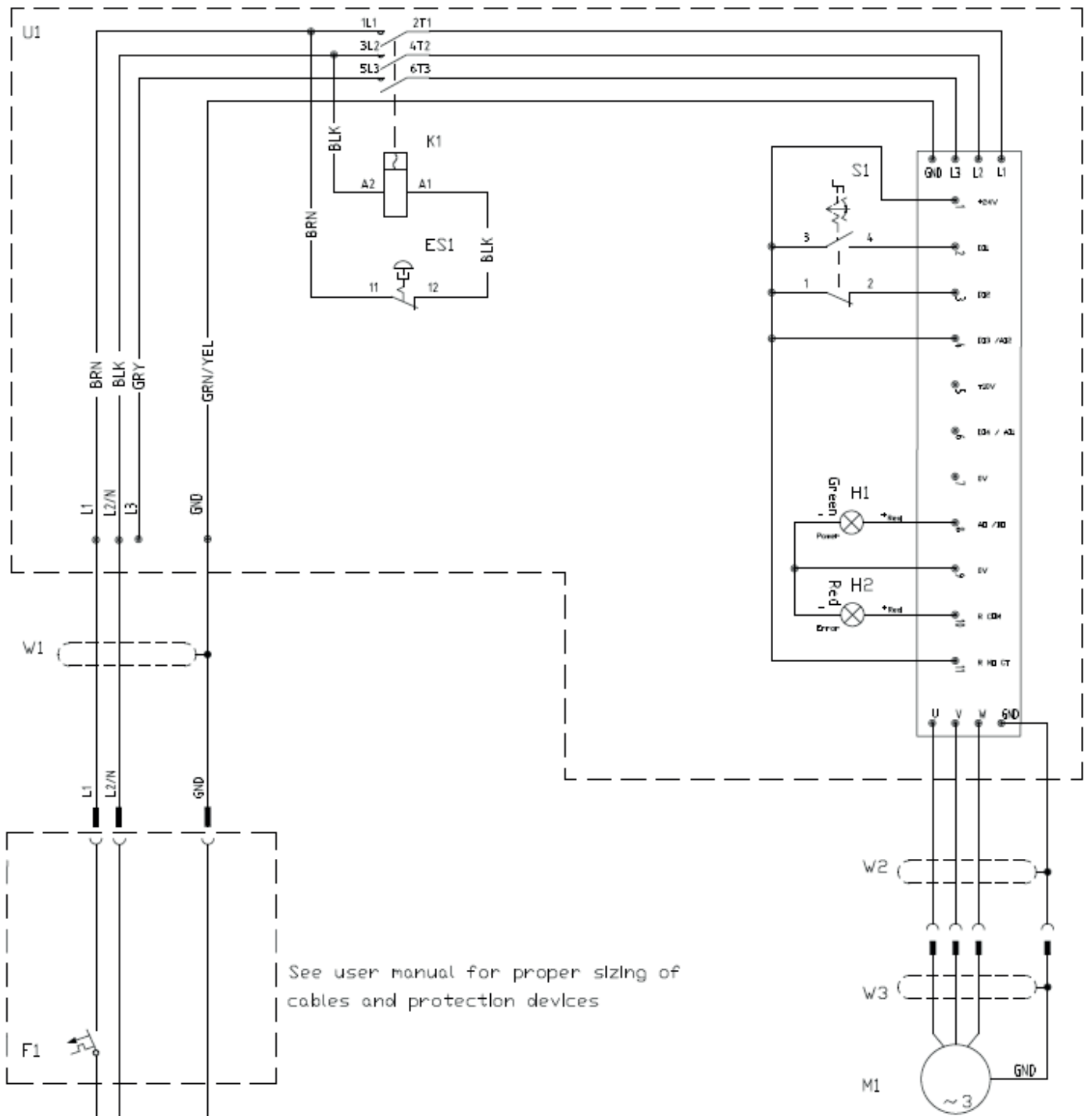


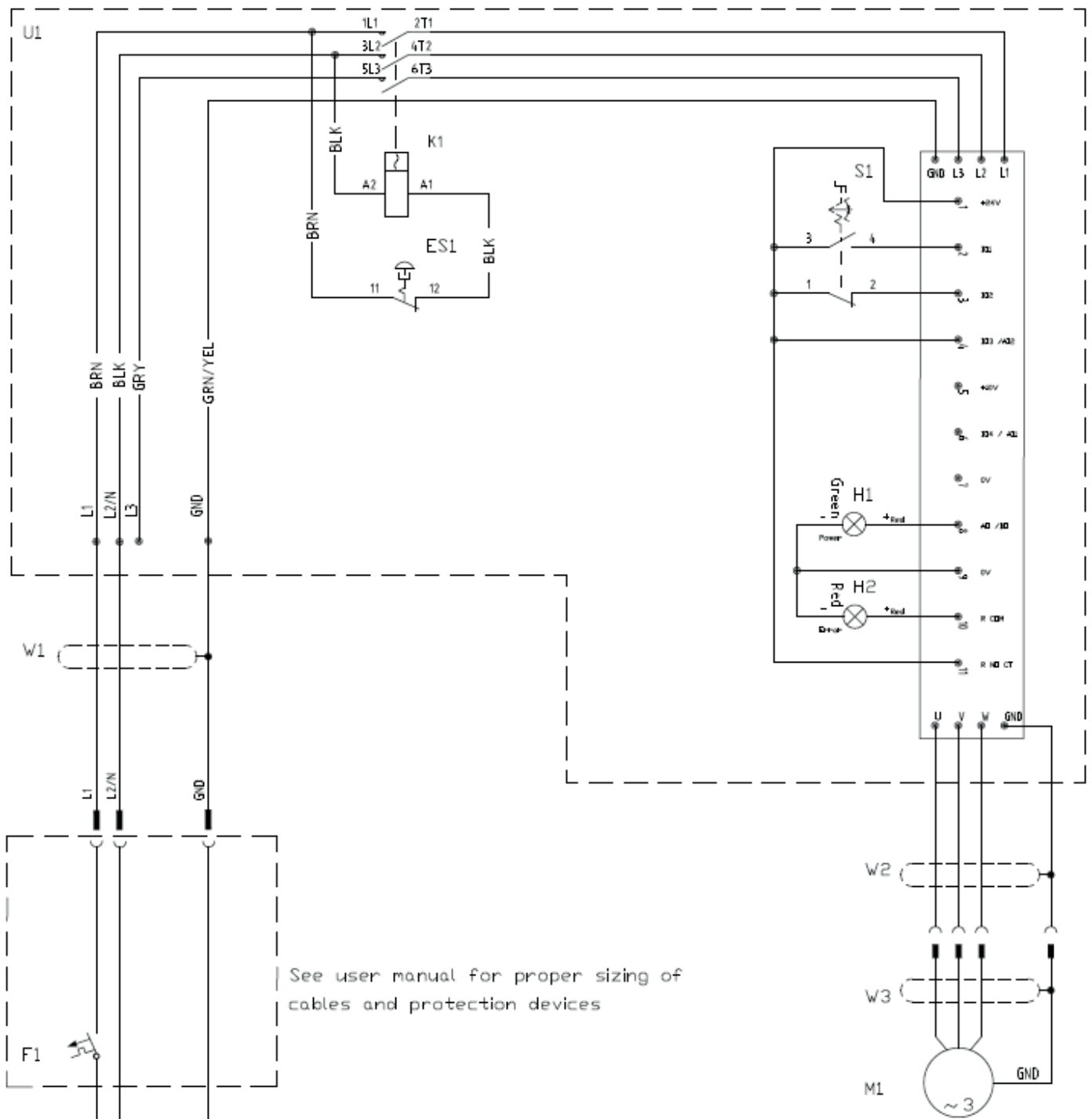
Item	Description	Part no	Qty
1	INVERTER GL V.2 1x230V 4kW	595738801	1
2	CONTACTOR	595739001	1
3	CONTACTOR PLATE	595704701	1
4	EMERGENCY STOP	594953301	1
5	LED RED	595739201	1
6	LED GREEN	595739101	1
7	SWITCH 3-POS RETURN	594953401	1
8	COVER PLATE	595704601	1
9	PRESS NUT M6	595679001	4
10	LOCK NUT M4	595672601	2
11	SCREW M4X8	593505601	2
12	OVERLAY	595647701	1

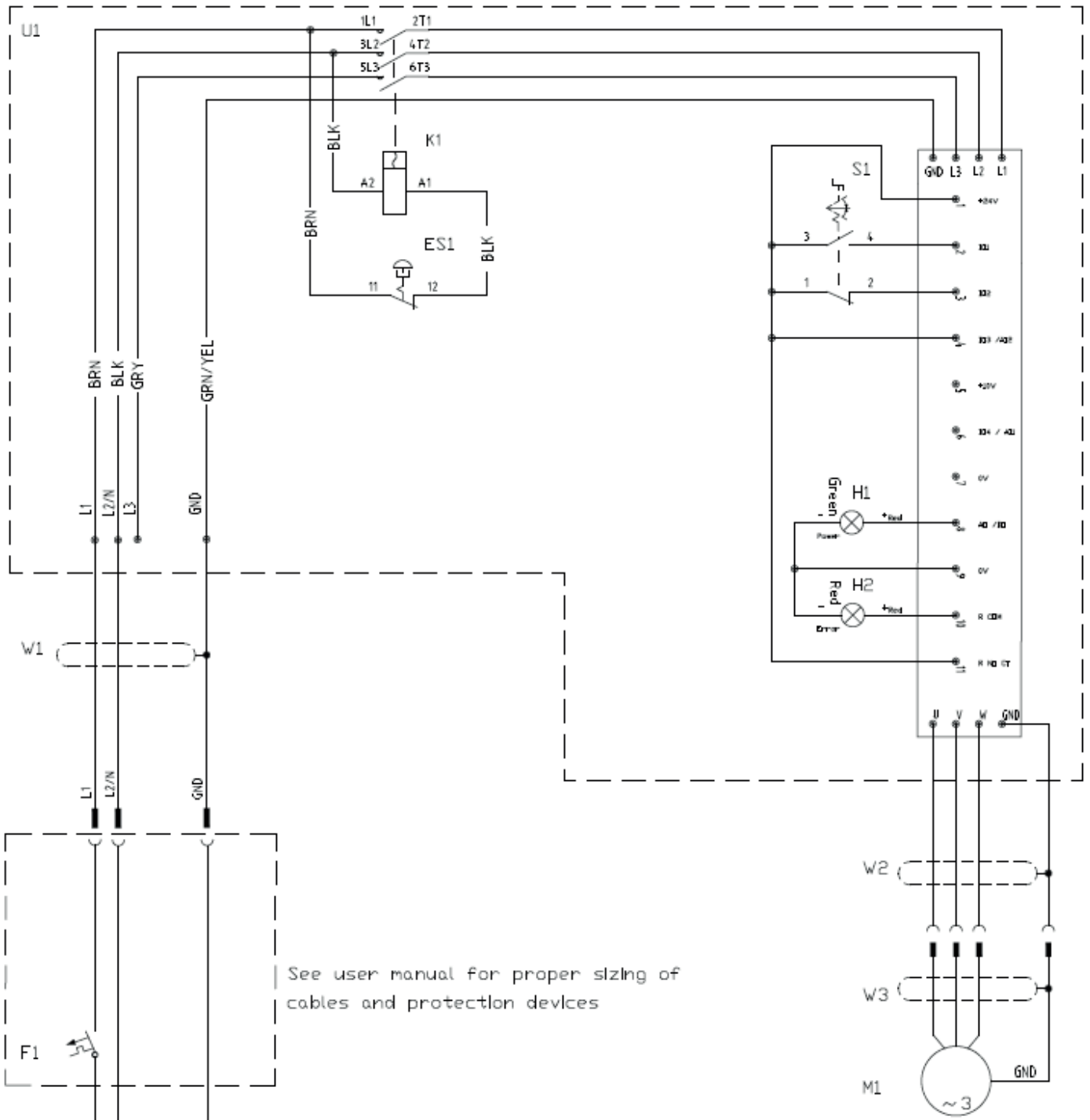
Greyline V.2 Electrical – 1x230 4kW



Item	Description	Part no	Qty
1	MOTOR CABLE GL MALE	593548601	1
2	MOTOR CABLE GL FEMALE	593548701	1
3	POWER CABLE GL WITHOUT PLUG	595728501	1
4	PLUG	593476801	1







Head office

HTC Sweden AB

Box 69
SE-614 22 Söderköping
Sweden

Street (delivery) address:

Klevvägen 7
SE-614 92 Söderköping
Sweden

Tel.: +46 (0)121-29400

Fax: +46 (0)121-15212

E-mail: info@htc-sweden.com

www.htc-floorsystems.com

HTC Floor Systems GmbH

Otto-Hahn-Str. 18
71069 Sindelfingen
Deutschland

Telefon: +49 7031 41030 – 0

Telefax: +49 7031 41030 – 22

Email: order@htc-europe.de

www.htc-floorsystems.com

HTC Inc.

5617 Tazewell Pike
Knoxville, TN 37918
USA

Tel.: +1 865 689 2311

Fax: +1 865 689 3991

E-mail: info@htc-america.com

www.htc-floorsystems.com

HTC Floor Systems Ltd.

Unit 4 Kingston Business Park
Dunfermline Court
Maidstone Road
Kingston
Milton Keynes
MK10 0BY
United Kingdom

Tel.: +44 (0) 845 460 2500

Fax: +44 (0) 845 460 1500

E-mail: info@htc-europe.co.uk

www.htc-floorsystems.com

HTC France S.A.S.

ZI Mondeville Sud
10 Rue Nicéphore Niepce
14120 Mondeville
France

Tel.: +33 (0)2 31 34 27 00

Fax: +33 (0)2 31 34 09 29

E-mail: info@htc-europe.fr

www.htc-floorsystems.com

