

18V UltraTrim 260

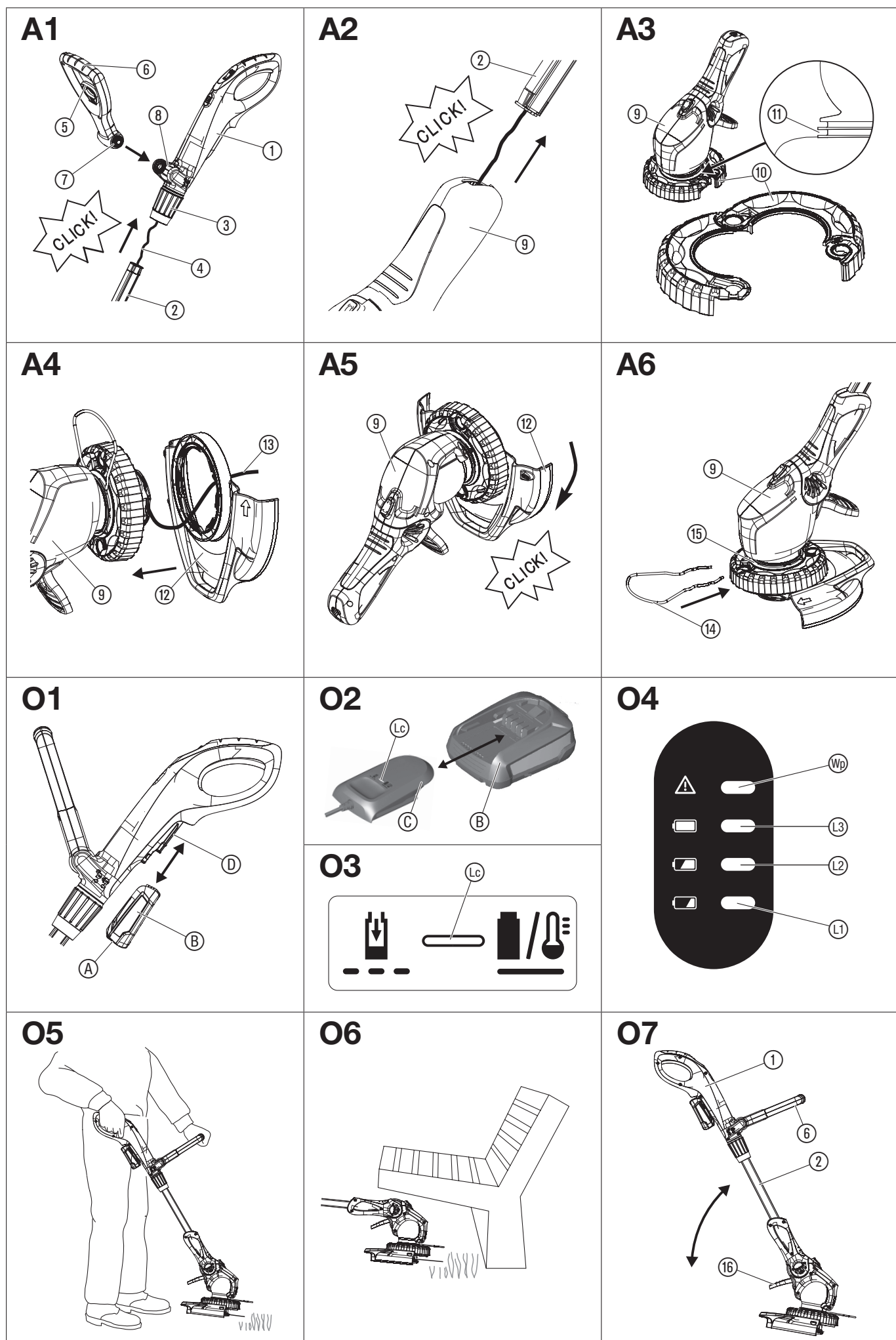
Art. 9705445-xx

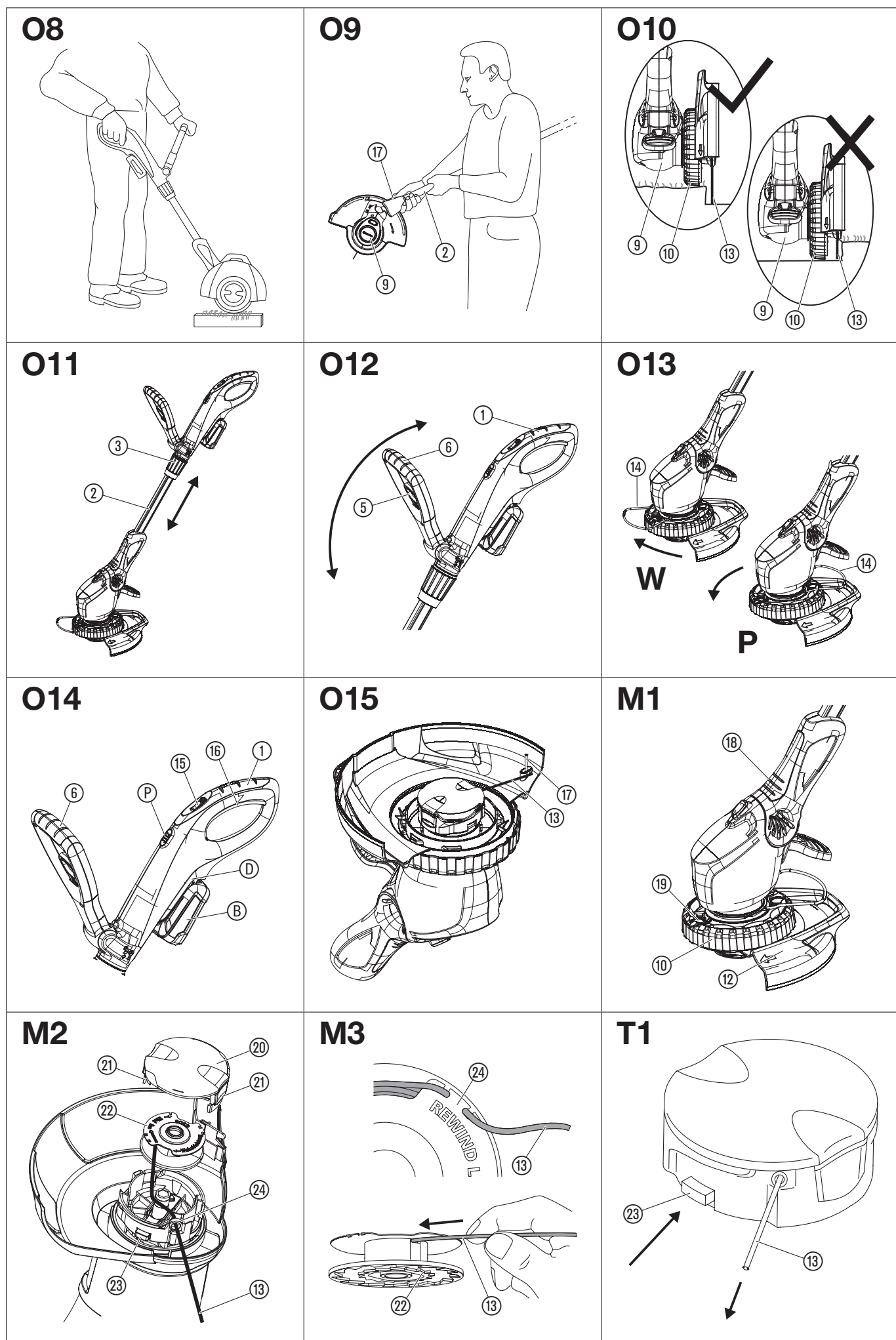
Art. 9705447-xx

Remark: “xx” stands for customer and country variants.
The basic product number is before the hyphen.

EN Operator's manual

Battery Trimmer





EN Battery Trimmer

1. SAFETY	4
2. ASSEMBLY	5
3. OPERATION	6
4. MAINTENANCE	7
5. STORAGE	7
6. TROUBLESHOOTING	7
7. TECHNICAL DATA	8
8. ACCESSORIES	8
9. SERVICE/WARRANTY	8

Original instructions.



This product may be used under supervision, or if instruction regarding the safe use of the product has been provided and the resulting dangers have been understood, by children aged 8 and above, as well as by persons with physical, sensory or mental disabilities or a lack of experience and knowledge. Children must not be allowed to play with the product. Cleaning and user maintenance must not be performed by children without supervision. The use of this product by young people under the age of 16 is not recommended.

Intended use:

The **FLYMO Trimmer** is intended to trim and to cut lawn and areas of grass in private domestic gardens and allotments.

The product is not intended for long term use.



DANGER! Risk of injury!

→ Do not use the product to cut hedges, to chop up material or to make compost.

1. SAFETY

Important! Read the operator's manual carefully before use and keep for future reference.

Symbols on the product:



Read operator's manual.



Keep bystanders away.



Always wear approved hearing protection.
Always wear approved eye protection.



Do not expose to rain.



For the charger:
Remove plug from the mains immediately if the cable is damaged or cut.

General safety warnings

Electrical safety



DANGER! Electric shock!

Risk of injury due to electric shock.

→ The product must be supplied through a residual current device (RCD) having a rated residual operating current not exceeding 30 mA.

Do not overreach and keep the balance at all times. Always be sure of the footing on slopes. Walk, never run.

Do not touch moving hazardous parts before the machine is disconnected from the mains and the moving hazardous parts have come to a complete stop.

Always wear substantial footwear and long trousers while operating the machine.

Safe operating practices

1 Training

a) Read the instructions carefully. Be familiar with the controls and the correct use of the machine.

- b) Never allow children or people unfamiliar with these instructions to use the machine. Local regulations can restrict the age of the operator.
- c) Keep in mind that the operator or user is responsible for accidents or hazards occurring to other people or their property.

2 Preparation

- a) Before use check the supply and extension cord for signs of damage or aging. If the cord becomes damaged during use, disconnect the cord from the supply immediately.
DO NOT TOUCH THE CORD BEFORE DISCONNECTING THE SUPPLY.
Do not use the machine if the cord is damaged or worn.
- b) Before use, always visually inspect the machine for damaged, missing or misplaced guards or shields.
- c) Never operate the machine while people, especially children, or pets are nearby.

3 Operation

- a) Keep supply and extension cords away from cutting means.
- b) Wear eye protection and stout shoes at all times while operating the machine.
- c) Avoid using the machine in bad weather conditions especially when there is a risk of lightning.
- d) Use the machine only in daylight or good artificial light.
- e) Never operate the machine with damaged guards or shields or without guards or shields in place.
- f) Switch on the motor only when the hands and feet are away from the cutting means.
- g) Always disconnect the machine from the power supply (i.e. remove the plug from the mains, remove the disabling device or removable battery):
 - 1) whenever the machine is left unattended;
 - 2) before clearing a blockage;
 - 3) before checking, cleaning or working on the machine;
 - 4) after striking a foreign object;
 - 5) whenever the machine starts vibrating abnormally.
- h) Take care against injury to feet and hands from the cutting means.
- i) Always ensure that the ventilation openings are kept clear of debris.

4 Maintenance and storage

- a) Disconnect the machine from the power supply (i.e. remove the plug from the mains, remove the disabling device or removable battery) before carrying out maintenance or cleaning work.
- b) Use only the manufacturer's recommended replacement parts and accessories.
- c) Inspect and maintain the machine regularly. Have the machine repaired only by an authorized repairer.
- d) When not in use, store the machine out of the reach of children.

Additional safety warnings

Battery safety



Read all the safety and general instructions.

Failure to observe the safety and general instructions may result in electric shock, fire and/or serious injury.

Store these instructions in a safe place. Only use the charger if you can fully evaluate all functions and carry them out without restrictions, or if you have received corresponding instructions.

→ **Supervise children during use, cleaning and maintenance.**

This will ensure that children do not play with the charger.

→ **Charge only lithium-ion batteries of the POWER FOR ALL system type PBA 18V with a capacity of 1.5 Ah or more (5 battery cells or more).**

The battery voltage must match the battery charging voltage of the charger. Do not charge any non rechargeable batteries.

Otherwise there is a risk of fire and explosion.

→  **Do not expose the charger to rain or wet conditions.**

Water entering a power tool will increase the risk of electric shock.

→ **Keep the charger clean.** Dirt poses a risk of electric shock.

→ **Always check the charger, cable and plug before use. Stop using the charger if you discover any damage. Do not open the charger yourself, and have it repaired only by a qualified specialist using only original replacement parts.**

Damaged chargers, cables and plugs increase the risk of electric shock.


→ **Do not operate the charger on an easily ignited surface (e.g. paper, textiles, etc.) or in a flammable environment.**

There is a risk of fire due to the charger heating up during operation.

→ In order to avoid safety hazards, if the power supply cord needs to be replaced, this must be done by FLYMO or by a customer service centre that is authorised to repair FLYMO power tools.

→ **Do not operate the product while it is charging.**

Products sold in GB only: Your product is fitted with an BS 1363/A approved electric plug with internal fuse (ASTA approved to BS 1362). If the plug is not suitable for your socket outlets, it should be cut off and an appropriate plug fitted in its place by an authorised customer service agent. The replacement plug should have the same fuse rating as the original plug. The severed plug must be disposed of to avoid a possible shock hazard and should never be inserted into a mains socket elsewhere.

- **These safety warnings apply only for lithium-ion batteries of the POWER FOR ALL system PBA 18V.**
- **Only use the battery with products of the POWER FOR ALL system manufacturers.** This is the only way in which you can protect the battery against dangerous overload.
- **Recharge only with the charger specified by the manufacturer.**
A charger that is suitable for one type of battery pack may create a risk of fire when used with another battery pack.
- **The battery is supplied partially charged.**
To ensure full battery capacity, fully charge the battery in the charger before using your power tool for the first time.
- **Keep battery packs out of the reach of children.**
- **Do not open the battery.** There is a risk of short-circuiting.
- **In case of damage and improper use of the battery, vapours may be emitted. The battery can set alight or explode.**
Ensure the area is well ventilated and seek medical attention should you experience any adverse effects. The vapours may irritate the respiratory system.
- **If used incorrectly or if the battery is damaged, flammable liquid may be ejected from the battery. Contact with this liquid should be avoided. If contact accidentally occurs, rinse off with water. If the liquid comes into contact with your eyes, seek additional medical attention.**
Liquid ejected from the battery may cause irritation or burns.
- **If the battery is damaged liquid can be ejected and cover nearby surfaces. Check affected parts.** Clean these parts or change them if necessary.
- **Do not short-circuit the battery pack. When the battery pack is not in use, keep it away from other metal objects, like paper clips, coins, keys, nails, screws or other small metal objects, that can make a connection from one terminal to another.**
Shorting the battery terminals together may cause burns or a fire.
- **The battery contacts can be hot after use.** Be careful of the hot contacts when removing the battery.
- **The battery can be damaged by pointed objects such as nails or screwdrivers or by force applied externally.** An internal short circuit may occur, causing the battery to burn, smoke, explode or overheat.
- **Never service damaged battery packs.** Service of battery packs should only be performed by the manufacturer or authorized service providers.
-  **Protect the battery against heat, e.g. against continuous intense sunlight, fire, dirt, water and moisture.**
There is a risk of explosion and short-circuiting.
- **Only operate and store the battery at an ambient temperature between -20 °C and +50 °C.**
Do not leave the battery in your car in the summer, for example.
At temperatures of <0 °C some devices may experience a loss of power.
- **Only charge the battery at an ambient temperature which is between 0 °C and +45 °C.** Charging outside of this temperature range can increase the risk of damage to the battery and pose a fire hazard.
- **After use, allow the battery to cool down for at least 30 minutes before charging or storing.**

Electrical safety



DANGER! Cardiac arrest!

This product makes an electromagnetic field while it operates. This field may under some conditions interfere with active or passive medical implants. To decrease the risk of conditions that can possibly injure or kill, we recommend persons with medical implants to speak with their physician and the medical implant manufacturer before you operate the product.

Check the area of hidden cables before trimming. Secure the working area before using.

Only use the battery product between 0 °C and 40 °C.

Disconnect the battery in case of emergency.

Do not use the product nearby a water, or for pond care.

Protect the battery contacts from moisture.

Personal safety



DANGER! Risk of suffocation!

Small parts can be easily swallowed. There is also a risk that the poly-bag can suffocate toddlers. Keep toddlers away when you assemble the product.

If the trimmer vibrates heavily, replace the spool and check the spool holder for damage.

Use the front handle to transport the trimmer.

Use personal protective equipment.

Wear gloves for cleaning the cutting device.

Always wear eye protection.

Protective equipment such as gloves, non-skid safety shoes, or hearing protection used for appropriate conditions will reduce personal injuries.

Be careful during adjustment of the product to prevent entrapment of the fingers between moving and fixed parts of the machine, or while assembling the protective cover.

Don't use water, or chemical substances for cleaning the guard or other parts of the trimmer.

Keep all nuts, bolts and screws tight to be sure the product is in a safe working condition.

Do not disassemble the product further than the delivery status.

Warning! When wearing hearing protection, and due to the noise produced by the product, the operator may not notice persons approaching.

While operation and transport pay special attention to the hazard for other people.

Stay alert, watch what you are doing and use common sense when operating a power tool.

Do not use a power tool while you are tired or under the influence of drugs, alcohol or medication.

A moment of inattention while operating power tools may result in serious personal injury.

2. ASSEMBLY



DANGER! Risk of injury!

Cut injury when the product starts accidentally.

- **Wait for the trimmer line to stop and remove the battery before you assemble the product.**

To assemble the handle, additional handle and trimmer head to the tube [Fig. A1/A2]:



DANGER!

The handle may only be assembled if the cable between the handle and the tube is in a perfect condition. The tube may not be assembled if the cable is damaged. Contact FLYMO customer service in such a case.

1. Carefully remove the handle ① together with the tube ② from the packaging. In doing so, no stress may be exerted upon the cable ④.
2. Open the clamping sleeve ③ (padlock symbol open).
3. Slide the handle ① onto the tube ② until it audibly engages. In doing so, the cable ④ may not become twisted or jammed.
4. By pulling on the handle ①, check whether it is firmly fixed to the tube ②. Once assembled, the handle ① and tube ② cannot be separated.
5. Close the clamping sleeve ③ (padlock symbol closed).
6. Pull the lock ⑤ belonging to the additional handle ⑥, push in both of the snap-fits ⑦ belonging to the additional handle ⑥ and snap them into the holder ⑧.
7. Slide the trimmer head ⑨ onto the tube ② until it audibly engages. In doing so, the cable may not become twisted or jammed.
8. By pulling on the trimmer head ⑨, check whether it is firmly fixed to the tube ②. Once assembled, the trimmer head ⑨ and tube ② cannot be separated.
9. Remove the safety clip from the starting lockout ⑩.

To assemble the wheel [Fig. A3]:

1. Attach the wheel ⑩ to the trimmer head ⑨. Make sure that it is located into the **bottom** groove ⑪ on the trimmer head ⑨.
2. Clip the wheel ⑩ together on each side. Make sure that it is secure.
3. Check that the wheel ⑩ turns freely.

To assemble the protective cover and the plant guard [Fig. A4/A5/A6]:



DANGER!

The product may only be used when the protective cover is assembled.

1. Locate the protective cover ⑫ over the trimmer head ⑨ and feed the trimmer line ⑬ through the hole in the protective cover ⑫.
2. Push the protective cover ⑫ onto the trimmer head ⑨.
3. Turn the trimmer head ⑨ anticlockwise until it audibly engages.
4. By turning the protective cover ⑫, check whether it is firmly fixed to the trimmer head ⑨.
5. Open the plant guard ⑭ and slide it into the **top** groove ⑮ on the trimmer head ⑨.
6. Turn the plant guard ⑭ clockwise, until it audibly engages, into the park position.

3. OPERATION



DANGER! Risk of injury!

Cut injury when the product starts accidentally.

→ Wait for the trimmer line to stop and remove the battery before you adjust or transport the product.

To charge the battery [Fig. 01/02/03]:



CAUTION!

→ **Note the mains voltage!** The voltage of the power source must match the voltage specified on the rating plate of the charger.

For the FLYMO Battery Trimmer Art. 9705445-xx there is no battery and no charger in the scope of delivery.

Thanks to the intelligent charging process, the charge condition of the battery is automatically detected and then charged up with the optimal charge current depending on battery temperature and voltage.

In this way, the battery is treated with care and remains permanently fully charged when it is stored in the charger.

1. Push the locking button (A) and remove the battery (B) from the battery holder (D).
2. Connect the battery charger (C) into a mains socket.
3. Slide the battery charger (C) onto the battery (B).

When the battery charge indicator (L) at the charger flashes green the battery is being charged.

When the battery charge indicator (L) at the charger illuminates permanently green the battery is completely charged (Charging time, see 7. TECHNICAL DATA).

4. Examine the charge status regularly while you charge.
5. When the battery (B) is completely charged, you can disconnect the battery (B) from the charger (C).

Meaning of the Indication Elements:

Indication on the charger [Fig. 03]:

Flashing of the Battery Charge Indicator (L) The charging procedure is indicated by **flashing** of the battery charge indicator (L).



Note: The charging procedure is only possible when the battery temperature is within the allowable charging temperature range, see 7. TECHNICAL DATA.

Continuous Lighting of the Battery Charge Indicator (L)



Continuous lighting of the battery charge indicator (L) indicates that the battery is fully charged or that the temperature of the battery is not within the allowable charging temperature range and can therefore not be charged.

When the battery is not inserted, **continuous lighting** of the battery charge indicator (L) indicates that the mains plug is inserted in the socket outlet and that the battery charger is ready for operation.

Battery charge status indication (P) on the product [Fig. 04/O14]:

After starting the product, the battery charge status indication (P) is displayed for 5 seconds.

Battery charge status	Battery charge status indication
67 – 100 % charged	(L), (L) and (L) illuminate green
34 – 66 % charged	(L) and (L) illuminate green
11 – 33 % charged	(L) illuminates green
0 – 10 % charged	(L) flashes green

If the LED (L) flashes green, the battery must be charged.

If the error LED (M) is illuminated or flashing, see 6. TROUBLESHOOTING.

To set the working position:

Working position 1 [Fig. 05]:

For standard trimming.

Working position 2 [Fig. 06/07]:

Trimming beneath obstacles.

The tube can be lowered from standard position **1** to two lowered positions **2** or **3** for trimming beneath obstacles.

1. Put the trimmer on the floor.
2. Hold the trimmer by both handles (1)/(6).
3. Push the foot pedal (16) with a foot and lower the tube (2) to the required position.
4. Release the foot pedal (16) and let the tube (2) engage again.

Working position 3 [Fig. 08/09/O10]:

Cutting at lawn edges.



CAUTION!

The trimmer may only be used when the trimmer head (9) is locked at 0° or 90°.

To rotate the trimmer head (9) to 90°, the tube must be in standard position 1.

1. Turn the plant guard into the **park position** (lateral).
2. Hold the trimmer by the tube (2) with both hands so that you can push the unlock button (17) with one finger.
3. Push the unlock button (17) and rotate the trimmer head (9) from 0° to 90° until it audibly engages.
4. Release the unlock button (17) and let the tube (2) engage again.
5. Place the trimmer head (9) with the wheel (10) on the lawn edge so that the trimmer line (13) cuts on the path. **(The wheel (10) must not stand on the path.)**

To adjust the tube length [Fig. O11]:



DANGER!

The product must not be used when the tube is completely inserted (transport position).

1. Loosen the clamping sleeve (3) (padlock symbol open).
2. Pull out the tube (2) to the required length.
3. Tighten the clamping sleeve again (3) (padlock symbol closed).

To adjust the position of the additional handle [Fig. O12]:

The position of the additional handle can be adjusted to your body height.

1. Pull the lock (5) belonging to the additional handle (6).
2. Tilt the additional handle (6) to the desired position.
3. Release the lock (5) again.

If the trimmer is correctly set to the body height, the posture is upright and the trimmer head in working position **1** is tilted slightly forwards.

→ Hold the trimmer by the main handle (1) and additional handle (6) in such a manner that the trimmer head is tilted forwards slightly.

To adjust the plant guard [Fig. O13]:

The plant guard (14) allows the trimming of grass close to plants and trees without damaging them with the trimmer line.

- **Work position W:** Turn the plant guard (14) anticlockwise, until it audibly engages.
- **Park position P (lateral):** Turn the plant guard (14) clockwise, until it audibly engages.

To start the trimmer [Fig. 01/O14]:



DANGER! Risk of injury!

Risk of injury if the product does not stop when you release the start lever.

→ **Do not bypass the safety devices or switches. For example do not attach the start lever to the handle.**

The product is provided with a two-switch safety device (start lever with starting lockout) to prevent the product from being turned on by accident.

To start:

1. Put the battery (B) into the battery holder (D) until it audibly engages.
2. Hold the additional handle (6) with one hand.
3. Hold the main handle (1) with the other hand, push the starting lockout (15) forward and pull the start lever (16).
The trimmer starts and the battery charge status indication (P) is displayed for 5 seconds.
4. Release the starting lockout (15) again.



CAUTION!

→ **Avoid contact of the trimmer line with hard objects (walls, stones, fences etc.) to prevent the trimmer line from wearing or breaking.**

To stop:

1. Release the start lever ⑩.
The trimmer stops.
2. Push the locking button ① and remove the battery ② from the battery holder ③.

Trimmer line extension (automatic) [Fig. O15]:

A clean cut is achieved only with the maximum trimmer line ⑬ length.

The trimmer line ⑬ is lengthened automatically when the spool comes to a standstill after switch off.

As the trimmer line can only be lengthened in small increments, it can be necessary in some cases to repeat the switch-off/switch-on action several times (up to 6 times). Important is that the spool comes to a complete standstill each time.

The trimmer line ⑬ has been sufficiently lengthened when, after switch-on, it audibly strikes the line limiter ⑭.

The FLYMO Spool and line Art. FLY098/535670090 or the FLYMO Trimmer line Art. NLO012/577616312 have to be replaced when the trimmer line has been used up.

4. MAINTENANCE



DANGER! Risk of injury!

Cut injury when the product starts accidentally.

→ Wait for the trimmer line to stop and remove the battery before you maintain the product.

To clean the trimmer [Fig. M1]:



DANGER! Risk of injury!

Risk of injury and risk of damage to the product.

→ Do not clean the product with water or with a water jet (in particular high-pressure water jet).

→ Do not clean with chemicals including petrol or solvents. Some can destroy critical plastic parts.

The airflow slots must always be clean.

1. Clean the airflow slots ⑮ with a soft brush (do not use a screwdriver).
2. Clean all movable parts after each operation. Especially remove any grass and dirt from the protective cover ⑯.
3. Remove the wheel ⑩ by pressing one of the buttons ⑰ to clean it.

To replace the spool and line [Fig. M2]:



DANGER! Risk of injury!

Do not use metallic cutting elements or replacement parts and accessories not provided by FLYMO.

Only use original FLYMO Spool and line. You can order Replacement Spool and line from your FLYMO dealer or directly from the FLYMO Customer Service.

• FLYMO Spool and line Art. FLY098/535670090

1. Release the spool cover ⑳ by pressing both locking clips ㉑ and remove the cover.
 2. Remove the spool ㉒.
 3. Clean the automatic lever ㉓. The automatic lever ㉓ must move freely.
 4. Feed the trimmer line ⑬ of the new spool ㉒ through the hole ㉔ and pull out about 10 cm.
 5. Insert the spool ㉒. Do not trap the trimmer line ⑬ when you do this.
 6. Fit the spool cover ㉒ so that both locking clips ㉑ audibly engage.
- If the spool cover ㉒ cannot be touched down, turn the spool ㉒ to and fro, until the spool ㉒ is completely in the spool holder.

The trimmer may only be used when the spool cover ㉒ is engaged.

To replace the trimmer line [Fig. M3]:

Only use original FLYMO Trimmer Line. You can order the replacement Trimmer line from your FLYMO dealer or directly from the FLYMO Customer Service.

• FLYMO Trimmer line Art. NLO012/577616312

1. Remove the spool ㉒ (see 4. MAINTENANCE To replace the spool and line).

2. Remove the rest of the trimmer line ⑬.
3. Clean the spool ㉒ and the automatic lever. The automatic lever must move freely.
4. Take approximately 8 m of the new trimmer line and insert 15 mm of the trimmer line ⑬ into the hole in the spool ㉒.
5. Wind the trimmer line ⑬ in the direction of the arrows on the top of the spool ㉒. Make sure that the trimmer line ⑬ is neatly coiled on the spool. (Failure to do so will impair the efficiency of the automatic trimmer line extension.)
6. Leave approximately 10 cm of the trimmer line unwound and push it into the cleat ㉕.
7. Insert the spool again (see 4. MAINTENANCE To replace the spool and line).

To clean the battery and the battery charger:

Make sure that the surface and the contacts of the battery and the battery charger always are clean and dry before you connect the battery charger.

Do not use running water.

→ **Battery charger:** Clean the contacts and the plastic parts with a soft and dry cloth.

→ **Battery:** Occasionally clean the ventilation slots and the terminals on the battery using a soft brush that is clean and dry.

5. STORAGE

To put into storage:

The product must be stored away from children.

1. Remove the battery.
2. Charge the battery.
3. Clean the trimmer, the battery and the battery charger (see 4. MAINTENANCE).
4. Store the trimmer, the battery and the battery charger in a dry, enclosed and frost-free place.

Disposal:

(in accordance with RL2012/19/EC/S.I. 2013 No. 3113)



The product must not be disposed of to normal household waste. It must be disposed of in line with local environmental regulations.

IMPORTANT!

→ Dispose of the product through or via your municipal recycling collection centre.

Disposal of the battery:



Li-ion

The FLYMO battery contains lithium-ion cells that should not be disposed of with normal household waste at the end of its life.

IMPORTANT!

→ Dispose of the batteries through or via your municipal recycling collection centre.

1. Discharge the lithium-ion cells completely (contact the FLYMO Service).
2. Protect the contacts on the lithium-ion cells against short circuits.
3. Dispose of the lithium-ion cells properly.

6. TROUBLESHOOTING



DANGER! Risk of injury!

Cut injury when the product starts accidentally.

→ Wait for the trimmer line to stop and remove the battery before you troubleshoot the product.

To pull the trimmer line out of the spool manually [Fig. T1]:

A trimmer line ⑬ that is too short or no longer extends automatically when the trimmer is turned on can be pulled out manually.

→ Hold down the automatic lever ㉓ and pull the trimmer line ⑬ at the same time.

To release retracted or welded trimmer line:

If the trimmer line ⑬ has disappeared into the spool ⑳ or if the automatic trimmer line extension still doesn't work after pulling the trimmer line ⑬ it may be welded in the spool ⑳.

1. Remove the spool ⑳ (see 4. MAINTENANCE *To replace the trimmer line*).
2. Unwind the trimmer line ⑬.
3. Clean the spool ⑳, the automatic lever ㉑ and the trimmer line ⑬.
The automatic lever ㉑ must move freely.
4. Wind the trimmer line ⑬ onto the spool ⑳ again (see 4. MAINTENANCE *To replace the trimmer line*).
5. Insert the spool ⑳ again (see 4. MAINTENANCE *To replace the spool*).

Problem	Possible Cause	Remedy
Trimmer does not cut	Trimmer line is worn or too short.	→ Extend the trimmer line.
	Trimmer line is empty.	→ Replace the spool or the trimmer line.
	Trimmer line is pulled into the spool or welded.	→ Pull the trimmer line out of the spool.
Trimmer line cannot be extended or is used quickly	Trimmer line became too dry and brittle (e.g. during the winter).	→ Put the spool in water for approx. 10 hours.
	Trimmer line frequently touched hard objects.	→ Prevent the trimmer line from touching hard objects.
	Automatic lever is dirty.	→ Clean the automatic lever.
Continuous clattering noise	Too much trimmer line was fed out.	→ Wind the trimmer line onto the spool.
	Trimmer line limiter is missing.	→ Contact the FLYMO Service.
Wheel stops turning	Wheel is dirty.	→ Clean the wheel.
Trimmer can no longer be stopped	Start lever is stuck.	→ Remove the battery and loosen the start lever.
Trimmer does not start or stops. LED ① is flashing green [Fig. 04]	Battery is empty.	→ Charge the battery.
Trimmer does not start or stops. Error-LED ㉒ is illuminated red [Fig. 04]	Battery temperature is outside the permissible temperature range.	→ Wait until the battery temperature is between 0 °C – + 45 °C again.
	There are drops of water or moisture between the battery contacts on the trimmer.	→ Remove the water drops/ moisture with a dry cloth.
	Engine is blocked.	→ Remove the obstacle. Start again.
Trimmer does not start or stops. Error-LED ㉒ is flashing red [Fig. 04]	Product is defective.	→ Contact the FLYMO Service.
Trimmer does not start or stops. Error-LED ㉒ is not illuminated [Fig. 04]	Battery is not put completely into the battery holder.	→ Put the battery completely into the battery holder until it audibly engages.
	Battery is defective.	→ Replace the battery.
	Product is defective.	→ Contact the FLYMO Service.
Charging is not possible. Battery charge indicator ㉓ is continuously illuminated [Fig. 03]	The battery is not connected (correctly).	→ Connect the battery to charger correctly.
	Battery contacts are dirty.	→ Clean the battery contacts (e.g. by connecting and disconnecting the battery several times. Replace the battery if necessary.
	Battery temperature is outside the permissible charging temperature range.	→ Wait until the battery temperature is between 0 °C – + 45 °C again.
Battery charge indicator ㉓ is not illuminated [Fig. 03]	Battery is defective.	→ Replace the battery.
	Mains plug of the charger is not (correctly) plugged in.	→ Insert the mains plug into the mains socket (completely).
Battery charge indicator ㉓ is not illuminated [Fig. 03]	Socket outlet, mains cable or charger is defective.	→ Check the mains voltage. Let the charger be checked if necessary by an authorised specialist dealer or the FLYMO Service.



For any other malfunctions please contact the Husqvarna UK Ltd. Customer Service. Repairs must only be done by Husqvarna UK Ltd. service departments or specialist dealers approved by FLYMO.

7. TECHNICAL DATA

Battery Trimmer	Unit	Value (Art. 9705445-xx / 9705447-xx)
Cutting width	cm	26
Rpm of spool	R/min.	8400
Trimmer line diameter	mm	1.6
Trimmer line supply	m	8
Trimmer line feed		automatic
Weight (without Battery)	kg	2.5
Sound pressure level L_{pA} ¹⁾ Uncertainty k_{pA}	dB (A)	77 3
Sound power level L_{WA} ²⁾ ; measured/ guaranteed Uncertainty k_{WA}	dB (A)	89 / 91 2
Hand/ arm vibration a_{vhw} ¹⁾ Uncertainty k_{vhw}	m/s ²	3 1.5

Measuring process complying with: ¹⁾ EN 50636-2-91 ²⁾ RL 2000/14/EC / S.I. 2001 No.1701



NOTE: The stated vibration emission value has been measured according to a standardized test procedure and can be used for comparison of one electric power tool with another. It can also be used for preliminary evaluation of exposure. The vibration emission value can vary during actual use of the electric power tool.

System Battery	Unit	Value (Art. 531382601) PBA 18V 2.5Ah W-B
Battery voltage	V (DC)	18
Battery capacity	Ah	2.5
Number of cells (Li-Ion)		5
Appropriate POWER FOR ALL system Battery Chargers: AL 1810 CV / AL 1815 CV / AL 1830 CV / AL 1880 CV.		
Battery Charger AL 1810 CV P4A	Unit	Value (Art. 531382201)
Mains voltage	V (AC)	220 – 240
Mains frequency	Hz	50 – 60
Rated power	W	26
Battery charging voltage	V (DC)	18
Max. battery charging current	mA	1000
Battery charging time 80 %/ 97 – 100 % (approx.)		
PBA 18V 2.0Ah W-B	min.	96 / 124
PBA 18V 2.5Ah W-B	min.	120 / 154
PBA 18V 4.0Ah W-C	min.	192 / 244
Permitted charging temperature range	°C	0 – 45
Weight according to EPTA-Procedure 01:2014	kg	0.17
Protection class		□ / II

Appropriate POWER FOR ALL system Batteries: PBA 18V.

8. ACCESSORIES

FLYMO Spool and line	As replacement for consumed spool and line.	Art. FLY098/ 535670090
FLYMO Trimmer line	As replacement for consumed line.	Art. NL0012/ 577616312
FLYMO System Battery PBA 18V/45 P4A PBA 18V/72 P4A	Battery for additional duration or for replacement.	Art. 531382601 Art. 531382701
FLYMO Battery Charger AL 1810 CV P4A	Charger for the POWER FOR ALL system Batteries PBA 18V..W-..	Art. 531382201

9. SERVICE/WARRANTY

Service:

Please contact the address on the back page.

Warranty statement:

In the event of a warranty claim, no charge is levied to you for the services provided.

Husqvarna UK Ltd. grants a warranty for all original FLYMO new products for 3 years* from the date of original purchase from the retailer, provided that the devices have been for private use only. This manufacturer's warranty does not apply to products acquired second hand. This warranty includes all significant defects of the product that can be proved to be material or manufacturing faults. This warranty is fulfilled by supplying a fully functional replacement product or by repairing the faulty product sent to us free of charge; we reserve the right to choose between these options. This service is subject to the following provisions:

- The product has been used for its intended purpose as per the recommendations in the operating instructions.
- Neither the purchaser nor a third party has attempted to open or repair the product.
- Only Original FLYMO replacement parts and wear parts have been used for operation.
- Presentation of the receipt.

Normal wear and tear of parts and components (such as blades, blade fixing parts, turbines, light bulbs, V-belts/toothed belts, impellers, air filters, spark plugs), visual changes, wear parts and consumables are excluded from the warranty.

This manufacturer's warranty is limited to replacement and repair of products in accordance with the abovementioned conditions. The manufacturer's warranty does not constitute an entitlement to lodge other claims against us as a manufacturer, such as for damages. This manufacturer's warranty does **not**, of course, affect statutory and contractual warranty claims against the dealer/retailer.

The manufacturer's warranty is governed by the law of the Federal Republic of Germany.

In case of a warranty claim, please return the faulty product, together with a copy of the receipt and a description of the fault, with postage paid to the service address.

(* Upon register)

Consumables:



The trimmer line and the spool are consumables and not included in the warranty.

Product liability

In accordance with the German Product Liability Act, we hereby expressly declare that we accept no liability for damage incurred from our products where said products have not been properly repaired by a FLYMO-approved service partner or where original FLYMO parts or parts authorised by FLYMO were not used.


EC Declaration of Conformity

The undersigned hereby certifies as the authorised representative of the manufacturer, Husqvarna AB, 561 82 Huskvarna, Sweden, that, when leaving our factory, the unit(s) indicated below is/are in accordance with the harmonised EU guidelines, EU standards of safety and product specific standards. This certificate becomes void if the unit(s) is/are modified without our approval.

Description of the product:	Battery Trimmer
Product type:	18V UltraTrim 260
Article-Number:	9705445-xx 9705447-xx
EC-Directives:	2000/14/EC 2006/42/EC 2011/65/EU 2014/30/EU Charger: 2014/35/EC
Harmonised EN:	EN ISO 12100 EN 60335-1 EN 50636-2-91 EN 62841-1 Charger: EN 60335-2-29
EC-type-examination:	DEKRA Testing and Certification GmbH Handwerkstraße 15 70565 Stuttgart
Number of notified body:	0158
Deposited Documentation:	GARDENA Technical Documentation, M. Jäger, 89079 Ulm
Conformity Assessment according to	2000/14/EC Procedure: art. 14 Annex VI
Noise level: measured/guaranteed	9705445-xx / 9705447-xx: 89 dB(A) / 91 dB(A)
Ulm, 31.12.2021 Authorised representative:	<div> Reinhard Pompe Vice President Products</div> <div> Wolfgang Engelhardt Vice President Supply Chain</div>

UKCA Declaration of Conformity

The manufacturer: Husqvarna AB, SE 561 82 Huskvarna, Sweden hereby certifies, when leaving our factory, the unit(s) indicated below is/are in accordance with the UK Regulations, designated standards of safety and product specific designated standards. This certificate becomes void if the units are modified without our approval.

Description of the Product:	Battery Trimmer
Product type:	18V UltraTrim 260
Article Number:	9705445-xx 9705447-xx
UK regulations:	S.I. 2008/1597 S.I. 2016/1091 S.I. 2012/3032 S.I. 2001/1701
Designated Standards:	EN ISO 12100 EN 60335-1 EN 50636-2-91 EN 62841-1 Charger: EN 60335-2-29
Conformity assessment body:	DEKRA Testing and Certification GmbH Handwerkstraße 15 70565 Stuttgart
Number of notified body	0158
Authorised Representative:	Husqvarna UK Limited
Deposited Documentation:	Preston Road, Aycliffe, County Durham UK DL5 6 UP
Noise level: measured / guaranteed	9705445-xx / 9705447-xx: 89 dB(A) / 91 dB(A)
Conformity Assessment according to:	According to S.I. 2001/1701 Art. 11 Schedule 9
Aycliffe, 31.12.2021 Authorised Representative:	 John Thompson Director

Service Address and Importer to

Great Britain

Husqvarna UK Ltd
Preston Road
Aycliffe Industrial Park
Newton Aycliffe
County Durham
DL5 6UP
Phone: +44 (0) 344 844 4558
customer.services@husqvarna.co.uk



42260-85.960.01/1021
Husqvarna AB
Drottninggatan 2
SE-561 82 Huskvarna
Sweden

Our policy of continuous improvement means that the specification of products may be altered from time to time without prior notice.

Copyright © 2021 Flymo S.A. All rights reserved.

Flymo® and other product and feature names are registered or unregistered trademarks of Flymo S.A.