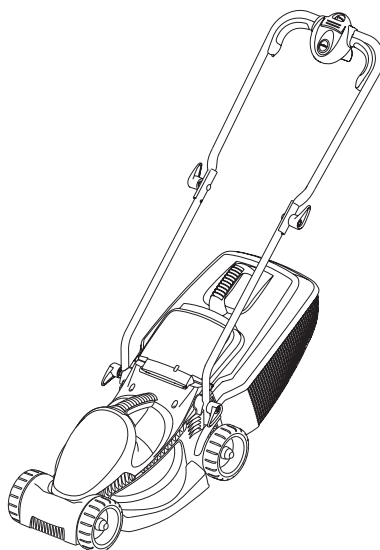


EM032

Art. 9643225-xx

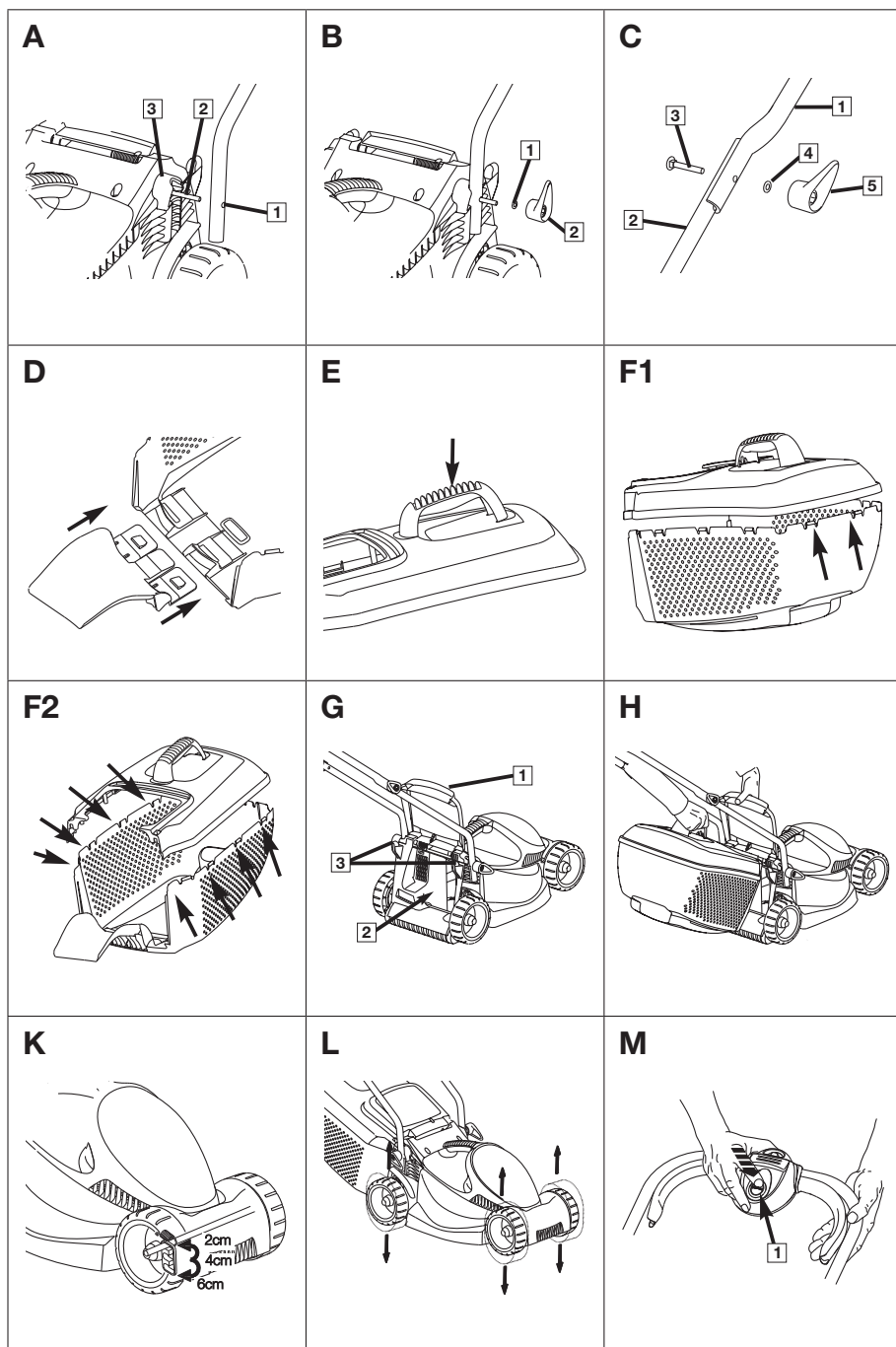


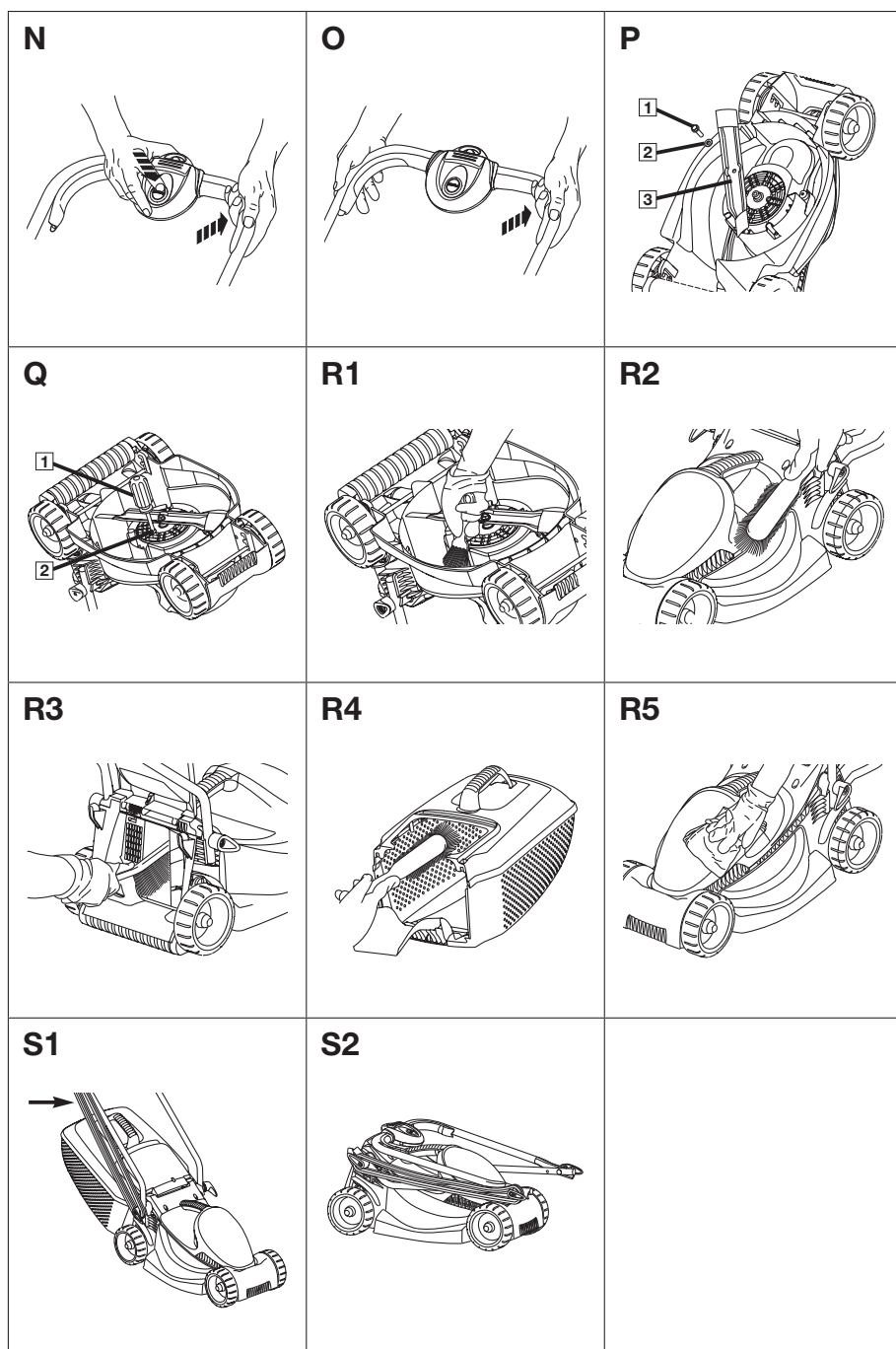
RM032

Art. 9643224-xx

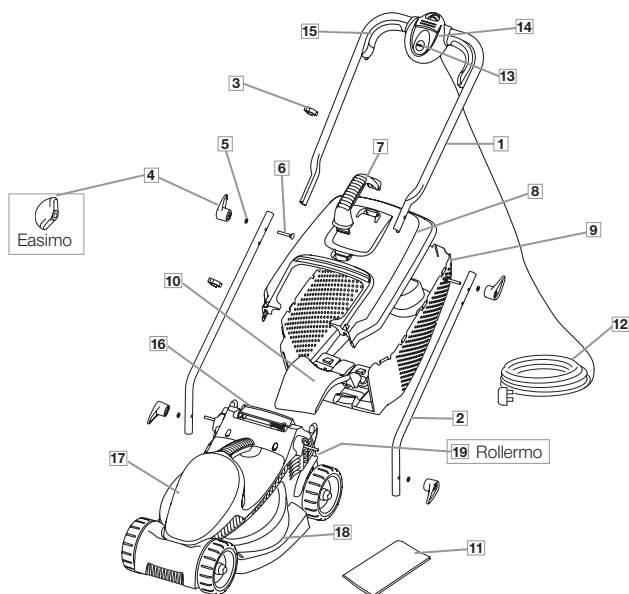
Remark: "xx" stands for customer and country variants. The basic product number is before the hyphen.

EN Operator's manual
Electric Lawnmower





Carton Contents



1. Upper handle
2. Lower handle x 2
3. Cable clip x 2
4. Wing knob x 4
5. Washer x 4
6. Bolt x 2
7. Grassbox handle
8. Grassbox upper
9. Grassbox lower
10. Grassbox tongue
11. Operator's manual
12. Electric cable with moulded on plug
13. Lock off button
14. Switchbox
15. Start/stop lever
16. Safety flap
17. Motor cover
18. Deck
19. Roller (Rolleremo only)

IMPORTANT !

Please check the contents of the carton are correct **BEFORE** assembling your new Flymo product. The Loose Parts Pack is packaged underneath the deck of the product.

IF ANY PARTS ARE MISSING CONTACT:

Husqvarna UK Ltd.
Customer Service Department direct
Telephone: 0344 844 4558 UK
1800 882 350 ROI
Fax: 01325 302530

FLYMO Electric Lawnmower EASIMO / ROLLERMO

1. SAFETY	5
2. ASSEMBLY	7
3. OPERATION	8
4. MAINTENANCE	9
5. STORAGE	10
6. TROUBLESHOOTING	10
7. TECHNICAL DATA	11
8. ACCESSORIES	11
9. SERVICE/WARRANTY	12

Original instructions.



This product may be used under supervision, or if instruction regarding the safe use of the product has been provided and the resulting dangers have been understood, by children aged 8 and above, as well as by persons with physical, sensory or mental disabilities or

a lack of experience and knowledge. Children must not be allowed to play with the product. Cleaning and user maintenance must not be performed by children without supervision. The use of this product by young people under the age of 16 is not recommended.

Intended use:

The **FLYMO Electric Lawnmower** is intended to cut lawn in private domestic gardens and allotments.

The product is not intended for long term use.



DANGER! Risk of injury!

Do not use the product to cut bushes, hedges, shrubs, to cut of climbers or grass on roofs or balcony boxes, to chop up branches, twigs and to level irregularities in the soil. Do not use the product on a slope steeper than 20° maximum.

1. SAFETY

IMPORTANT!

Read the operator's manual carefully before use and keep for future reference.

Symbols on the product:



Read operator's manual.



Keep other persons away.



Beware of sharp blades. Blades continue to rotate after the engine is switched off. Disconnect the mains cable before you do maintenance or if the cable becomes damaged or cut.



Keep the mains cable away from the cutting blades.

General safety warnings

Electrical safety



DANGER! Electric shock!
Risk of injury due to electric shock.

→ The product must be supplied through a residual current device (RCD) having a rated residual operating current not exceeding 30 mA.



DANGER! Risk of physical injury!
Cut injury when the blade turns or the product starts accidentally.

→ Disconnect the product from the mains before you do maintenance or you replace parts. Thereby the disconnected socket must be in the visual range.

Cables

If extension cables are used, these must comply with the minimum cross-sections in the table below:

Voltage	Cable length	Cross section
220 – 240 V / 50 Hz	Up to 40 m	1.0 mm ²
220 – 240 V / 50 Hz	Up to 60 m	1.5 mm ²
220 – 240 V / 50 Hz	Up to 100 m	2.5 mm ²

Minimum rating: 1.0 mm² size cable, 10 amps 250 volts AC.

Your product is supplied with cable wired directly into the product.

1. If the supply cord is damaged, it must be replaced by your local Husqvarna UK Ltd. Approved Service Centre or similarly qualified persons in order to avoid a hazard.
2. Flymo Extension Cables are available from your local Husqvarna UK Ltd. Approved Service Centre.
3. Do not wire an extension cable directly to your product yourself. Please contact your local Husqvarna UK Ltd.

Approved Service Centre for further information on the connectors and kits available.

4. Only use extension cables specifically designed for outdoor use and which conform to one of the following specifications: Ordinary rubber (60245 IEC 53), Ordinary PVC (60227 IEC 53) or Ordinary PCP (60245 IEC 57).

Connectors – Important

- Flymo connectors are suitable for use with 2 core cable only. Under no circumstances should these connectors be used for earthed products.
- All Flymo connectors and cables are of splashproof construction. They are not waterproof and must not be left outside permanently nor should they be submerged or immersed in water. Do not let cable lay or trail through pools of water or splashed with water from hose pipes.

Mains plug replacement – Important

- If the plug supplied is cut off it should be destroyed. There is an electric shock hazard if a cut off plug is inserted into a 13 amp socket.
1. No earth required. Flymo products are double insulated to EN60335 and under no circumstances should an earth be connected to any part of the product.
 2. Ensure the mains voltage suits your product.
 3. Important! The wires in the mains lead are coloured in accordance with the following code: BLUE – NEUTRAL; BROWN – LIVE. The wire which is coloured BLUE must be connected to the Terminal which is marked with the letter 'N' or coloured BLACK. The wire which is coloured BROWN must be connected to the Terminal which is marked with the letter 'L' or coloured RED.
 4. It is important that the outer sheath is clamped correctly into the 3-pin plug.
 5. If in doubt consult your local Service Repairer or qualified electrician before the machine is used.
 6. A 13 Amp fuse must be fitted to the mains plug.
 7. The normal plug fuse and household fuse only protect the electrical equipment and are not a safeguard against electrocution.

Training

1. Read the instructions carefully. Be familiar with the controls and the correct use of the machine.
2. Never allow children or people unfamiliar with these instructions to use the machine. Local regulations can restrict the age of the operator.
3. Never operate the machine while people, especially children, or pets are nearby.
4. Keep in mind that the operator or user is responsible for accidents or hazards occurring to other people or their property.

Preparation

1. While operating the machine always wear substantial footwear and long trousers. Do not operate the machine when barefoot or wearing open sandals. Avoid wearing clothing that is loose fitting or that hanging cords or ties.

2. Thoroughly inspect the area where the machine is to be used and remove all objects which can be thrown by the machine.
3. Before using, always visually inspect to see that the blade, blade bolt and the blade assembly are not worn or damaged. Replace worn or damaged components in set to preserve balance. Replace damaged or unreadable labels.
4. Before use check the supply and extension cord for signs of damage or aging. If the cord becomes damaged during use, disconnect the cord from the supply immediately. **DO NOT TOUCH THE CORD BEFORE DISCONNECTING THE SUPPLY.** Do not use the machine if the cord is damaged or worn.

Operation

1. Operate the machine only in daylight or in good artificial light.
2. Avoid operating the machine in wet grass.
3. Always be sure of your footing on slopes.
4. Walk, never run.
5. Mow across the face of slopes, never up and down.
6. Exercise extreme caution when changing direction on slopes.
7. Do not mow excessively steep slopes.
8. Use extreme caution when reversing or pulling the machine towards you.
9. Stop the blade(s) if the machine has to be tilted for transportation when crossing surfaces other than grass, and when transporting the machine to and from area to be used.
10. Never operate the machine with defective guards or shields, or without safety devices, for example deflection and/or grass collector, in place.
11. Switch on the motor carefully according to instructions and with feet well away from the blade(s).
12. Do not tilt the machine when switching on the motor, except if the machine has to be tilted for starting. In this case, do not tilt it more than absolutely necessary and lift only the part, which is away from the operator.
13. Do not start the machine when standing in front of the discharge opening.
14. Do not put hands or feet near or under rotating parts. Keep clear of the discharge opening at all times.
15. Do not transport the machine while the power source is running.
16. Stop the machine, and remove the plug from the socket. Make sure that all moving parts have come to a complete stop
 - whenever you leave the machine,
 - before clearing blockages or unclogging chute,
 - before checking, cleaning or working on the machine,
 - after striking a foreign object. Inspect the machine for damage and make repairs before restarting and operating the machine;

if the machine starts to vibrate abnormally (check immediately)

- inspect for damage,

- replace or repair any damaged parts,
- check for and tighten any loose parts.

Maintenance and storage

1. Keep all nuts, bolts, and screws tight to be sure the machine is in safe working condition.
2. Check the grass collector frequently for wear or deterioration.
3. On machines with multi blade, take care as rotating one blade can cause other blades rotate.
4. Be careful during adjustment of the machine to prevent entrapment of the fingers between moving blades and fixed parts of the machine.
5. Always allow the machine to cool down before storing.
6. When servicing the blades be aware that, even though the power source is switched off, the blades can still be moved.
7. Replace worn or damaged parts for safety. Use only genuine replacement parts and accessories.

Additional safety warnings

Electrical safety



DANGER! Cardiac arrest!

This product makes an electromagnetic field while it operates. This field may under some conditions interfere with active or passive medical implants. To decrease the risk of conditions that can possibly injure or kill, we recommend persons with medical implants to speak with their physician and the medical implant manufacturer before you operate the product.

Before use, examine the cable for signs of damage or ageing. If the cable is found to be defective, take the product to an Authorised Service Centre and have the cable replaced.

Do not use the product if the electric cables are damaged or worn.

Immediately disconnect from the mains if the cable is cut, or the insulation is damaged. Do not touch the electric cable until the cable has been disconnected. Do not repair a cut or damaged cable. Replace it with a new one.

The extension cable must be uncoiled. Coiled cables can overheat and reduce the efficiency of your mower.

Keep the extension cable away from product, always work away from the power point mowing up and down, never in circles.

Do not pull cable around sharp objects.

Always switch off at the mains before disconnecting any plug, cable connector or extension cable.

Stop the engine, disconnect the mains and examine the cable for damage or ageing before you wind the cable for storage. Do not repair a damaged cable, replace it with a new one. Use only genuine replacement cable.

Always wind the cable carefully, avoid kinking.

Do not carry the product by the cable.

Do not pull on the cable to disconnect any of the plugs.

Use only on AC mains supply voltage shown on the product rating label.

Our products are double insulated to EN 60335.

Do not connect an earth to any part of the product.

Check the working area for hidden cables.

Do not use for pond care or close to water.

Personal safety



DANGER! Risk of suffocation!

Small parts can be easily swallowed. There is also a risk that the polybag can suffocate toddlers. Keep toddlers away when you assemble the product.

Do not use in explosive atmosphere.

Do not operate the product when you are tired, ill or under the influence of alcohol, drugs or medicine or when you are exhausted.

Do not overload the mower.

Use gloves, wear slip resistant shoes and wear eye protection.

Do not use under wet conditions.

Do not use on wet grass.

Do not disassemble the product further than the delivery status.

Only start the mower with an upright standing handle.

Do not use the start levers alternately.

Use the handles carefully.

Safety Cut-Out

The engine is protected by a Safety Cut-Out which is activated when the blade becomes jammed or if the engine is overloaded. When this occurs, stop and disconnect the product from the mains. The Safety Cut-Out will only reset when you release the start/stop lever. Clear any obstruction and wait for a few minutes for the Safety Cut-Out to reset before you continue to use the product.

2. ASSEMBLY



DANGER! Risk of physical injury!

Cut injury when the blade turns or the product starts accidentally.

→ **Wait for the blade to stop, disconnect the product from the mains and use gloves before you do assembly.**

The Loose Parts Pack is packaged underneath the deck.

To assemble the lower handles to the deck [Fig. A/B]:

1. Place the bolt (A2) through the hole in the lower handle (A1) until the lower handle fits into the recess (A3).

- Place the washer **(B1)** and the wing knob **(B2)** on to the bolt and tighten the wing knob. **It may take 20 – 25 turns to fully tighten on initial assembly.**
- Repeat on the other side.

To assemble the upper handles to the lower handles [Fig. C]:

- Ensure the upper handle is located correctly with the lock-off button on the switchbox uppermost.
- Ensure the upper handle **(C1)** and the lower handle **(C2)** are aligned correctly.
- Fit the bolts **(C3)**, washers **(C4)** and wing knobs **(C5)**. Tighten the wing knob.
- Fit the cable to the handles with the clips provided. Make sure the cable is not trapped between the upper and lower handles.

To assemble the grassbox [Fig. D/E/F]:

- Slide the grassbox tongue into the slots in the grass-box lower until it clicks securely into position **(D)**.
- Push the grassbox handle into the slots in the grass-box upper until it clicks securely into position **(E)**.
- Starting at the rear of the grassbox, locate the grass-box upper into the grassbox lower by aligning the clips **(F1)**. Ensure all clips are correctly located **(F2)** before clicking into position.
- Clip the two halves together, ensuring all clips are securely connected.

3. OPERATION



DANGER! Risk of physical injury!

Cut injury when the blade turns or the product starts accidentally.

→ **Wait for the blade to stop, disconnect the product from the mains and use gloves before you connect or adjust the product.**

To use the lawnmower with the grass box:

Fitting fully assembled grassbox to lawnmower [Fig. G/H]:

- Lift safety flap **(G1)**.
 - Make sure the discharge chute is clean and free from debris **(G2)**.
 - Locate fully assembled grassbox onto 2 location points **(G3)** at the rear of the deck as illustrated in pic. **H**.
 - Locate safety flap onto the top of the grassbox. Ensure the grassbox is securely located.
- IMPORTANT!**
AFTER FITTING ENSURE NO GAP REMAINS BETWEEN THE SAFETY FLAP AND THE GRASS-BOX.
 - Removal is the reverse procedure.
 - For larger areas of grass where grass collection is not required you can use your lawnmower without the grassbox. Ensure the Safety Flap is fully closed. The design of the safety flap permits the cut grass to be discharged downward behind the machine.

To adjust the cutting height [Fig. K/L]:

- Height of cut is adjusted by raising or lowering the front and rear wheels.
- There are five heights of cut on this product.
- NOTE:**
A medium height of cut is recommended for most lawns. The quality of your lawn will suffer and collection will be poor if you cut too low.

Cutting height	Wheel position
Low	Front position 2 cm Rear position 2 cm
Low to Medium	Front position 2 cm Rear position 4 cm
Medium	Front position 4 cm Rear position 4 cm
Medium to High	Front position 4 cm Rear position 6 cm
High	Front position 6 cm Rear position 6 cm

To start the lawnmower [Fig. M/N/O]:



DANGER! Risk of injury!

Risk of injury if the product does not stop when you release the start levers.

→ **Do not bypass the safety devices or switches. For example do not attach the start levers to the handle.**

The product is fitted with a two-handed safety device (start levers with lock-off button (M1)) to prevent the product from being turned on by accident.

To start:

- Connect plug to mains and switch on.
- Press and hold the lock-off button **(M1)** on the switch-box, then squeeze one of the start/stop levers towards the upper handle **(N)**.
 - Continue to squeeze the start/stop lever towards the upper handle and release the lock-off button **(O)**.
 - Lower the lawnmower to its proper operating position and commence mowing.
- NOTE: There are two start/stop levers fitted. Either one can be used for starting the lawnmower.**
 - IMPORTANT: Do not use the start/stop levers intermittently.**

To stop:

→ Release the pressure on the start/stop lever.

How to mow:

1. Start mowing the edge of the lawn nearest to the power point so the cable is laid out on the lawn you have already cut.
2. Mow twice a week during the growing season, your lawn will suffer if more than a third of its length is cut at one time and this may also result in poor collection.

Do not overload your lawnmower.

Mowing long thick grass may cause the motor speed to drop, you will hear a change in the motor sound. If the

motor speed drops you may overload your lawnmower which may cause damage. When mowing in long thick grass a first cut with the cutting height set higher will help reduce the load.

See 3. OPERATION *To adjust the cutting height.*

**DANGER! Risk of physical injury!**

Cut injury when the blade turns or the product starts accidentally.

- **Wait for the blade to stop, disconnect the product from the mains and use gloves before you put/remove the grass box.**
- **Do not put your hands in the discharge opening.**

4. MAINTENANCE

**DANGER! Risk of physical injury!**

Cut injury when the blade turns or the product starts accidentally.

- **Wait for the blade to stop, disconnect the product from the mains and use gloves before you do maintenance.**

To remove and fit the blade [Fig. P/Q]:

Switch off, wait until the blade has stopped rotating and disconnect from the mains electricity supply **BEFORE** attempting to remove or refit the blade.

Always handle the blade with care – sharp edges could cause injury.

To remove the blade:

P1 – blade bolt

P2 – washer

P3 – blade

1. To remove the blade bolt, hold the blade firmly with a gloved hand and with a spanner, loosen the blade bolt by turning it anti-clockwise (**P**).
2. Remove the blade bolt, washer and blade (**P**).
3. Inspect for damage and clean as necessary.
4. In the event of a blade becoming difficult to remove, insert a screwdriver (**Q1**) into the hole (**Q2**) to lock the drive, then use a spanner (13 mm A/F) to loosen the blade bolt by turning the spanner anti-clockwise. Ensure the screwdriver is removed before attempting to turn on the machine.

Renew your metal blade after 50 hours mowing or 2 years whichever is the sooner – regardless of condition. If the blade is cracked or damaged replace it with a new one.

To fit the blade:

1. Fit the blade to the shaft with the sharp edges of the blade pointing away from the shaft and you are able to read the text on the blade *This side to grass*.
2. Re-assemble blade bolt through the washer and the blade.
3. Hold the blade firmly with a gloved hand and tighten the blade bolt firmly with a spanner. Do not over tighten.

To clean the lawnmower [Fig. R1/R2/R3/R4/R5]:**DANGER! Risk of injury!**

Risk of injury and risk of damage to the product.

- **Do not clean the product with water or with a water jet (in particular high-pressure water jet).**
- **Do not clean with chemicals including petrol or solvents. Some can destroy critical plastic parts.**

**IMPORTANT!**

- **It is very important that you keep your lawnmower clean. Grass clippings left in any of the air intakes or under the deck could become a potential fire hazard.**

1. Remove grass from under the deck with brush (**R1**).
2. Using a soft brush – remove grass clippings from all air intakes (**R2**), the discharge chute (**R3**) and the grass box (**R4**).
3. Wipe over the surface of your lawnmower with a dry cloth (**R5**).

5. STORAGE

To put into storage:

The product must be stored away from children.

To store the cable (Rollermo only) [Fig. S1]:

→ Your electric cable can be wrapped around the cable wrap wing knobs to enable tidy and safe storage (S1).

To store the lawnmower [Fig. S2]:

1. Loosen the wing knobs to enable the handles to be folded over the product (S2).
2. Store the lawnmower in a dry, enclosed and frost-free place.

At the end of the mowing season:

1. Replace blade, bolts, nuts or screws, if necessary.
2. Clean your lawnmower thoroughly.
3. Make sure that the electric cable is stored correctly to prevent damage.

Disposal:

(in accordance with RL2012/19/EC/S.I. 2013 No. 3113)



The product must not be disposed of to normal household waste. It must be disposed of in line with local environmental regulations.

IMPORTANT!

→ Dispose of the product through or via your municipal recycling collection centre.

6. TROUBLESHOOTING



DANGER! Risk of physical injury!

Cut injury when the blade turns or the product starts accidentally.

→ **Wait for the blade to stop, disconnect the product from the mains and use gloves before you do troubleshooting.**

Fails to Operate

1. Is the correct Starting procedure being followed?
See 3. OPERATION *To start the lawnmower.*
2. Is the Power turned on?
3. Check the fuse in the plug, if blown replace.

→ **Fuse continues to blow? Immediately disconnect from the mains electricity supply and consult your local approved Service Centre.**

Poor Grass Collection

1. Disconnect from the mains electricity supply.
2. Clean the outside of the air intakes, the discharge chute and the underside of the deck.
3. Raise to a higher height of cut.
See 3. OPERATION *To adjust the cutting height.*

→ **If poor collection persists. Immediately disconnect from the mains electricity supply and consult your local approved Service Centre.**

Excessive Vibration

1. Disconnect from the mains electricity supply.
2. Check that the blade is fitted correctly?
3. If the blade is damaged or worn, replace it with a new one.

→ **If vibration persists? Immediately disconnect from the mains electricity supply and consult your local approved Service Centre.**

Lawnmower becomes heavy to push

1. Disconnect from the mains electricity supply.
2. In long grass or uneven ground, the height of cut should be raised to a higher position.
See 3. OPERATION *To adjust the cutting height.*
3. Check that the wheels and rollers can rotate freely.

→ **If problem persists? Immediately disconnect from the mains electricity supply and consult your local approved Service Centre.**



For any other malfunctions please contact the Husqvarna UK Ltd. Customer Service. Repairs must only be done by Husqvarna UK Ltd. service departments or specialist dealers approved by FLYMO.

7. TECHNICAL DATA

<i>Electric lawnmower</i>	Unit	Value (EM032) 9643225-xx	Value (RM032) 9643224-xx
Rated Power	kW	0.9	1.0
Mains voltage	V	230	230

<i>Electric lawnmower</i>	Unit	Value (EM032) 9643225-xx	Value (RM032) 9643224-xx
Mains frequency	Hz	50	50
Speed of rotation cutting blade	R/min.	3,600	3,600
Cutting width	cm	32	32
Weight	kg	8.74	8.97
Sound pressure level L_{pA} ¹⁾ Uncertainty k_{pA}	dB(A)	77.3 3.0	77.3 3.0
Sound power level L_{WA} ²⁾ : measured / guaranteed Uncertainty k_{WA}	dB(A)	93 / 94 1.0	92 / 93 1.0
Hand/arm vibration a_{vhv} ¹⁾ Uncertainty k_a	m/s ²	2.43 1.5	2.43 1.5

Measuring process complying with: ¹⁾ EN 60335-2-77 ²⁾ RL 2000/14/EC/S.I. 2001 No.1701



NOTE: The stated vibration emission value has been measured according to a standardized test procedure and can be used for comparison of one electric power tool with another. It can also be used for preliminary evaluation of exposure. The vibration emission value can vary during actual use of the electric power tool.

8. ACCESSORIES

FLYMO Replacement Blade

As replacement for blunt blade.

**Reference no. FLY046
Part no. 510760890**

9. SERVICE/WARRANTY

Service:

Please contact the address on the back page.

Warranty statement:

In the event of a warranty claim, no charge is levied to you for the services provided.

Husqvarna UK Ltd. grants a warranty for all original FLYMO new products for two years from the date of original purchase from the retailer, provided that the devices have been for private use only. This manufacturer's warranty does not apply to products acquired second hand. This warranty includes all significant defects of the product that can be proved to be material or manufacturing faults. This warranty is fulfilled by supplying a fully functional replacement product or by repairing the faulty product sent to us free of charge; we reserve the right to choose between these options. This service is subject to the following provisions:

- The product has been used for its intended purpose as per the recommendations in the operating instructions.
- Neither the purchaser nor a third party has attempted to open or repair the product.
- Only Original FLYMO replacement parts and wear parts have been used for operation.

- Presentation of the receipt.

Normal wear and tear of parts and components (such as blades, blade fixing parts, turbines, light bulbs, V-belts/toothed belts, impellers, air filters, spark plugs), visual changes, wear parts and consumables are excluded from the warranty.

This manufacturer's warranty is limited to replacement and repair of products in accordance with the abovementioned conditions. The manufacturer's warranty does not constitute an entitlement to lodge other claims against us as a manufacturer, such as for damages. This manufacturer's warranty does **not**, of course, affect statutory and contractual warranty claims against the dealer/retailer.

The manufacturer's warranty is governed by the law of the Federal Republic of Germany.

In case of a warranty claim, please return the faulty product, together with a copy of the receipt and a description of the fault, with postage paid to the service address.

Consumables:



The blade and electric mains cable are consumables and not included in the warranty.

PRODUCT LIABILITY

In accordance with the German Product Liability Act, we hereby expressly declare that we accept no liability for damage incurred from our products where said products have not been properly repaired by a FLYMO-approved service partner or where original FLYMO parts or parts authorised by FLYMO were not used.

EC DECLARATION OF CONFORMITY


The undersigned hereby certifies as the authorised representative of the manufacturer, Husqvarna AB, 561 82 Huskvarna, Sweden, that, when leaving our factory, the unit(s) indicated below is/are in accordance with the harmonised EU guidelines, EU standards of safety and product specific standards. This certificate becomes void if the unit(s) is/are modified without our approval.

Description of the product:	Mower Rolleremo	
Product type:	RM032 EM032	
Article-Number:	9643224-xx 9643225-xx	
CE-Directives:	2006/42/EC 2014/30/EU 2011/65/EU 2000/14/EC	
Harmonized EN:	EN ISO 12100 EN 60335-1 EN 60335-2-77	
Deposited Documentation:	GARDENA Technical Documentation, M. Jäger, 89079 Ulm	
Conformity Assessment according to:	2000/14/EC Procedure: art. 14 Annex VI	
Noise level: measured / guaranteed	9643224-xx: 92 dB(A) / 93 dB(A) 9643225-xx: 93 dB(A) / 94 dB(A)	
Ulm, 09.09.2021		
Authorised representative:	 Reinhard Pompe Vice President Products	 Wolfgang Engelhardt Vice President Supply Chain

UKCA DECLARATION OF CONFORMITY

The manufacturer: Husqvarna AB SE 561 82 Huskvarna, Sweden hereby certifies, when leaving our factory, the unit(s) indicated below is/are in accordance with the UK Regulations, designated standards of safety and

product specific designated standards. This certificate becomes void if the units are modified without our approval.

Description of the product:	Mower Easimo
Product type:	RM032 EM032
Article number:	9643224-xx 9643225-xx
UK regulations:	S.I. 2008/1597 S.I. 2016/1091 S.I. 2012/3032 S.I. 2001/1701
Designated standards:	EN ISO 12100 EN 60335-1 EN 60335-2-77
Authorised Representative:	Husqvarna UK Limited
Deposited Documentation:	Preston Road, Aycliffe, County Durham UK DL5 6UP
Noise level: measured / guaranteed	9643224-xx: 92 dB(A) / 93 dB(A) 9643225-xx: 93 dB(A) / 94 dB(A)
Conformity Assessment according to:	According to S.I. 2001/1701 Art, 11 Schedule 9
Aycliffe, 09.09.2021	
Authorised Representative:	 John Thompson Director

Serviceaddress and Importer to

Great Britain

Husqvarna UK Ltd
Preston Road
Aycliffe Industrial Park
Newton Aycliffe
County Durham
DL5 6UP
Phone: +44 (0) 344 8444558
customer.services@husqvarna.co.uk

21329-85.960.01/0921
Husqvarna AB
S-561 82 Huskvarna
Sweden

Our policy of continuous improvement means that the specification of products may be altered from time to time without prior notice.

Copyright © 2021 Flymo S.A. All rights reserved.

Flymo® and other product and feature names are registered or unregistered trademarks of Flymo S.A.

