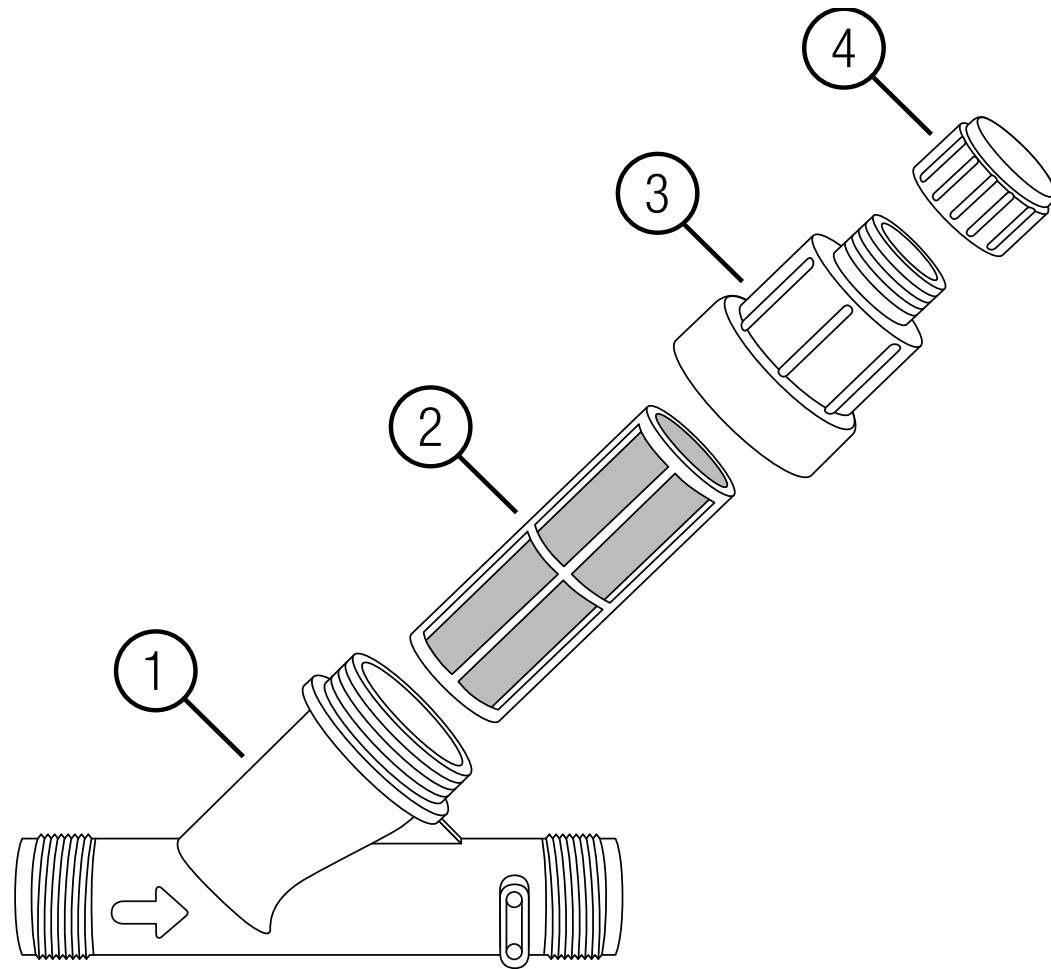


Operator's manual
Art. 8200 Pressure Regulator

GARDENA Pressure Regulator, Art. 8200
Original instructions



Packungsinhalt

- ① Housing
- ② Filter
- ③ Housing ring
- ④ Cap

Intended use

The **GARDENA Pressure Regulator** is intended to reduce the output pressure in irrigation systems of private gardens and allotments to 3.1 bar maximum, as well as to protect the irrigation systems from contamination.

Inhalt

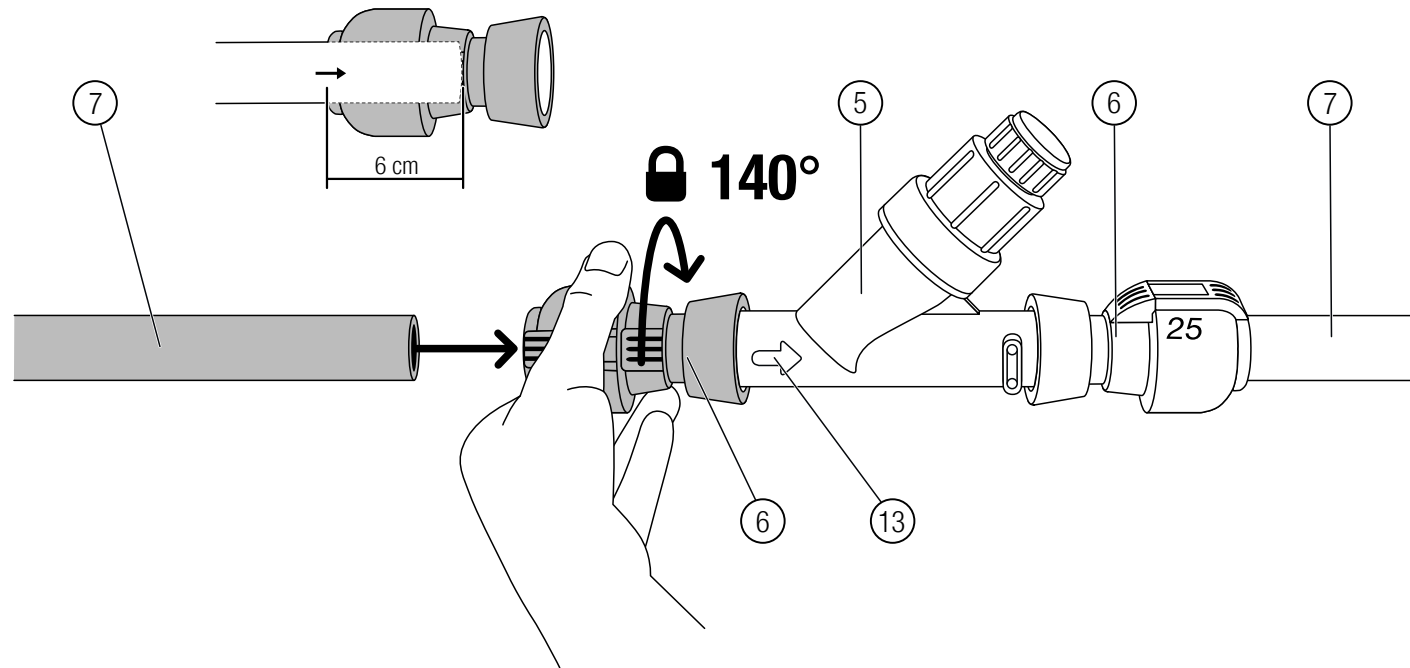
1. Assembly	4
1.1. To install the pressure regulator above ground	4
1.2. To install the pressure regulator below ground	4
1.2.1 To perform a test run	5
1.2.2 To install the system below ground	5
2. Maintenance	9
2.1. To flush the pressure regulator	9
2.2. To clean the pressure regulator	9
3. Storage	10
3.1. To put into storage	10
3.1.1 Drainage with the drain valve set (art. 2770-20)	10
3.1.2 Drainage with drain valves installed (art. 2760-20)	10
4. Technical data	10
5. Accessories / Spare parts	10
6. Service	11
6.1. Gardena service store	11
6.2. Service addresses	11
6.2.1 United Kingdom	11
6.2.2 Australia	11
6.2.3 New Zealand	11
6.2.4 South Africa	11

1. ASSEMBLY

You can install the pressure regulator above or below ground. We recommend installing the pressure regulator below ground, and centrally in front of the valves in order to protect downstream components from excessive operating pressure. Additionally, the integrated filter protects the irrigation system from contamination.

1.1. To install the pressure regulator above ground

In case of an installation above ground, you need one **GARDENA Connector 25 mm x 1" female thread (art. 2762)** per side in order to connect the pressure regulator to the **GARDENA Connecting Pipes of 25 mm (Art. 2700 / 2701 / 2718)**.



1. On each side, screw a connector (art. 2762) (6) finger-tight onto the pressure regulator (5).
 2. Place the pressure regulator (5) between the connectors (6), the filter (2), (3), (4) pointing upwards.
Make sure to install the pressure regulator (5) correctly in the direction of the water flow indicated by the arrow (13) on the pressure regulator (5).
 3. On each side, connect the connecting pipes (7) of the irrigation system to the connectors (art. 2762) (6).
Make sure to insert the connecting pipes (7) into the connectors (6) by 6 cm.
- After a few centimetres you will feel a resistance (sealing ring). Push the connecting pipe in even further until it is stopped. This ensures a tight connection.

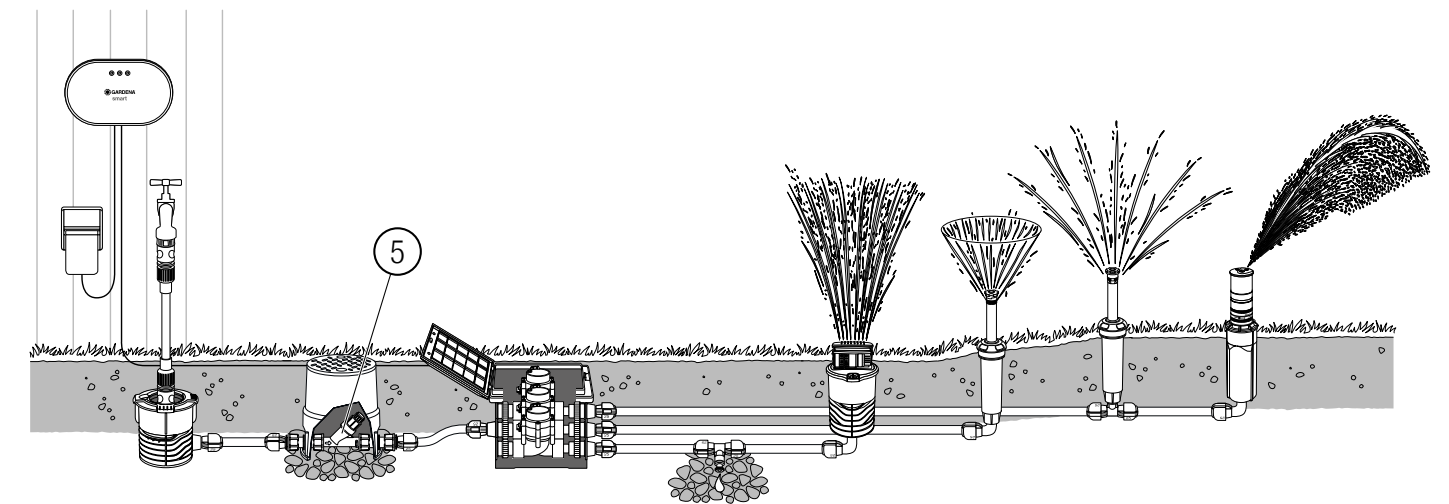
1.2. To install the pressure regulator below ground

In case of an installation below ground, you need two different connectors per side in order to connect the pressure regulator to the **GARDENA connecting pipes of 25 mm (Art. 2700 / 2701 / 2718)**:

- the **GARDENA 1"x1" connectors (art. 2758)**
- the **GARDENA connectors 25 mm x 1" male thread (art. 2763)**

In case of an installation below ground, we also recommend using the valve shaft (art. 1290) to have better access to the pressure regulator.

Example of a sprinkler system containing a pressure regulator installed below ground:

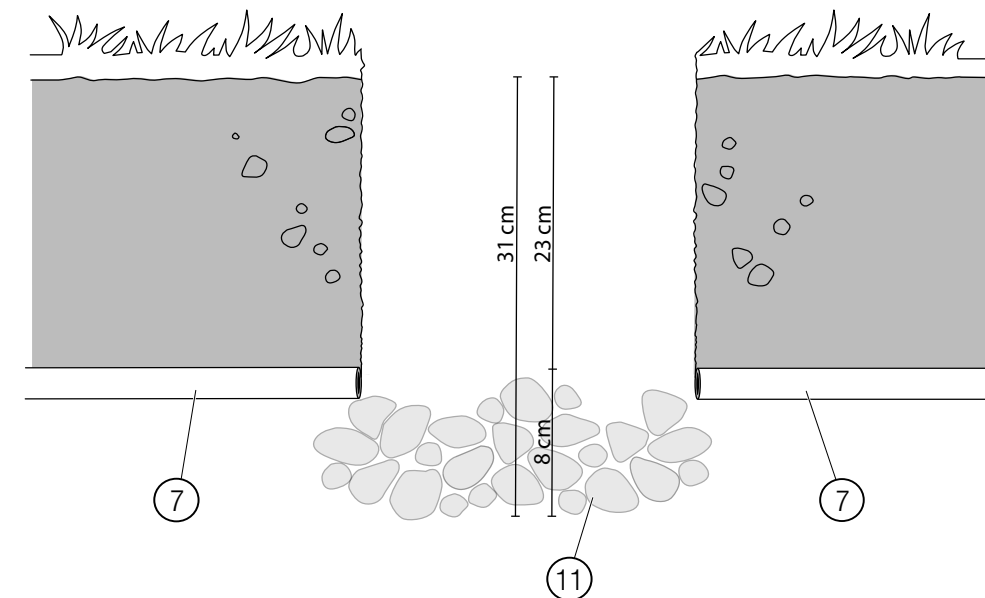


1.2.1 To perform a test run

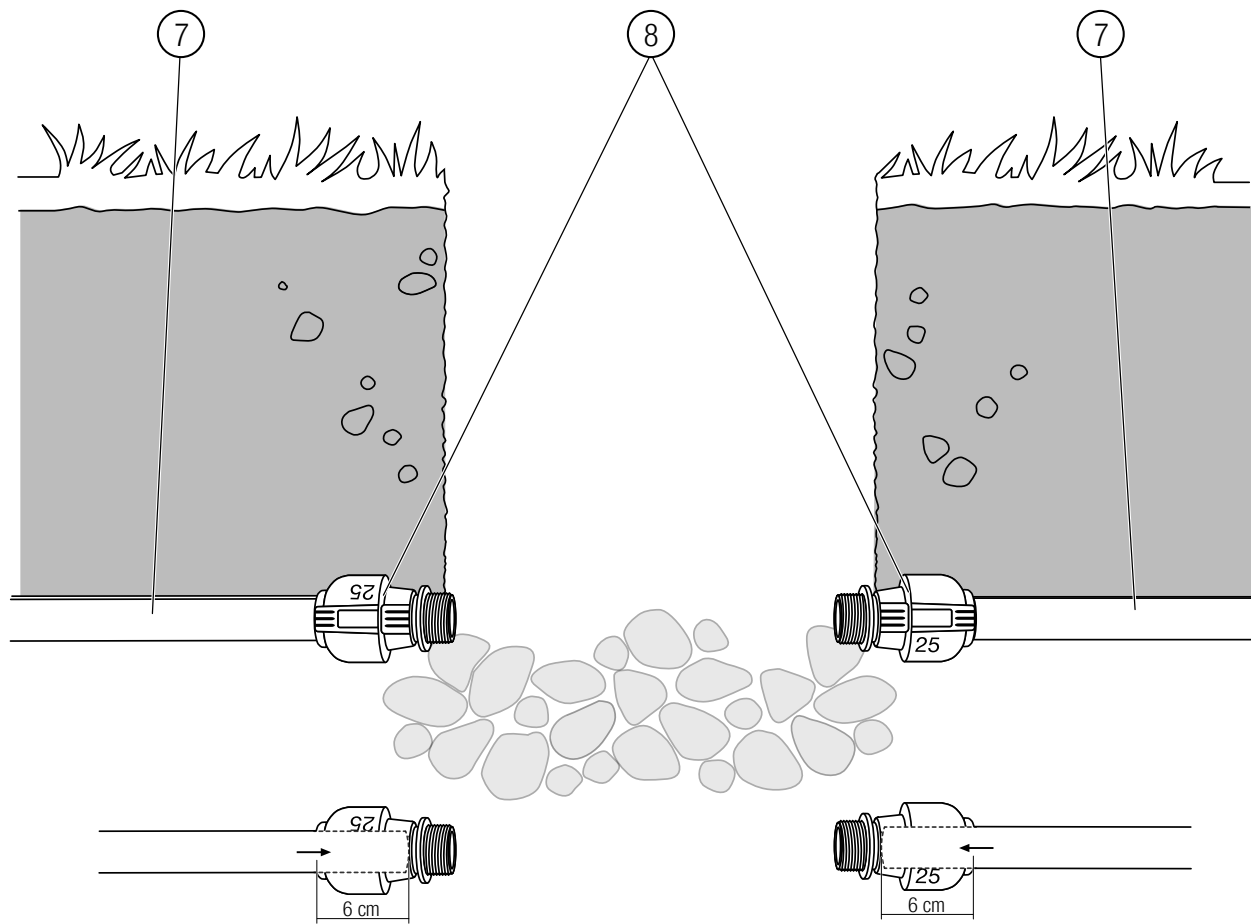
Before installing the irrigation system below ground, we recommend that you carry out a test run above ground:

1. Lay out the irrigation system above ground.
2. Cut the connecting pipes to the required length.
3. Install the irrigation system above ground.
4. Open the water supply to check the irrigation system for leaks.
 - If the irrigation system **is tight**, you can install it below ground.
 - If the irrigation system **is not tight**, check that all connections are made correctly, e.g. that the connecting pipes are inserted into the connectors as far as they will go.

1.2.2 To install the system below ground



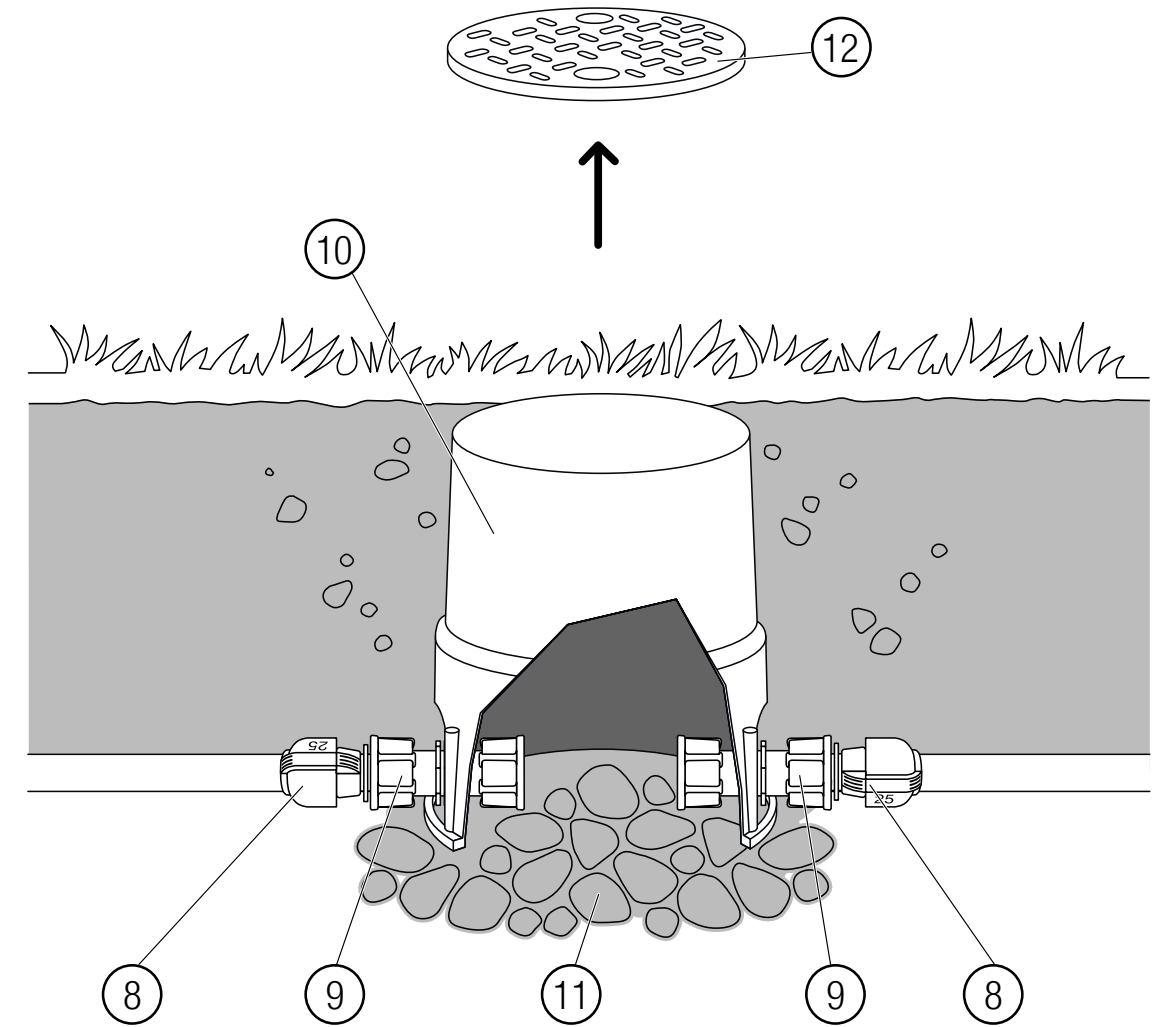
1. Prepare the hole in the ground that will receive the valve shaft.
Make sure that the hole is approximately 31 cm deep (the height of the valve shaft plus the layer of coarse gravel).
2. Fill coarse gravel (11) on a surface of approx. 20 x 20 x 8 cm at the place where you want to install the valve shaft (10).



3. On each side, connect a connector (art. 2763) (8) to the connecting pipes (7) of the irrigation system (8).

*Make sure to insert the connecting pipes (7) into the connectors (8) by **6 cm**.* (7).

→ After a few centimetres you will feel a resistance (sealing ring). Push the connecting pipe in even further until it is stopped. This ensures a tight connection.

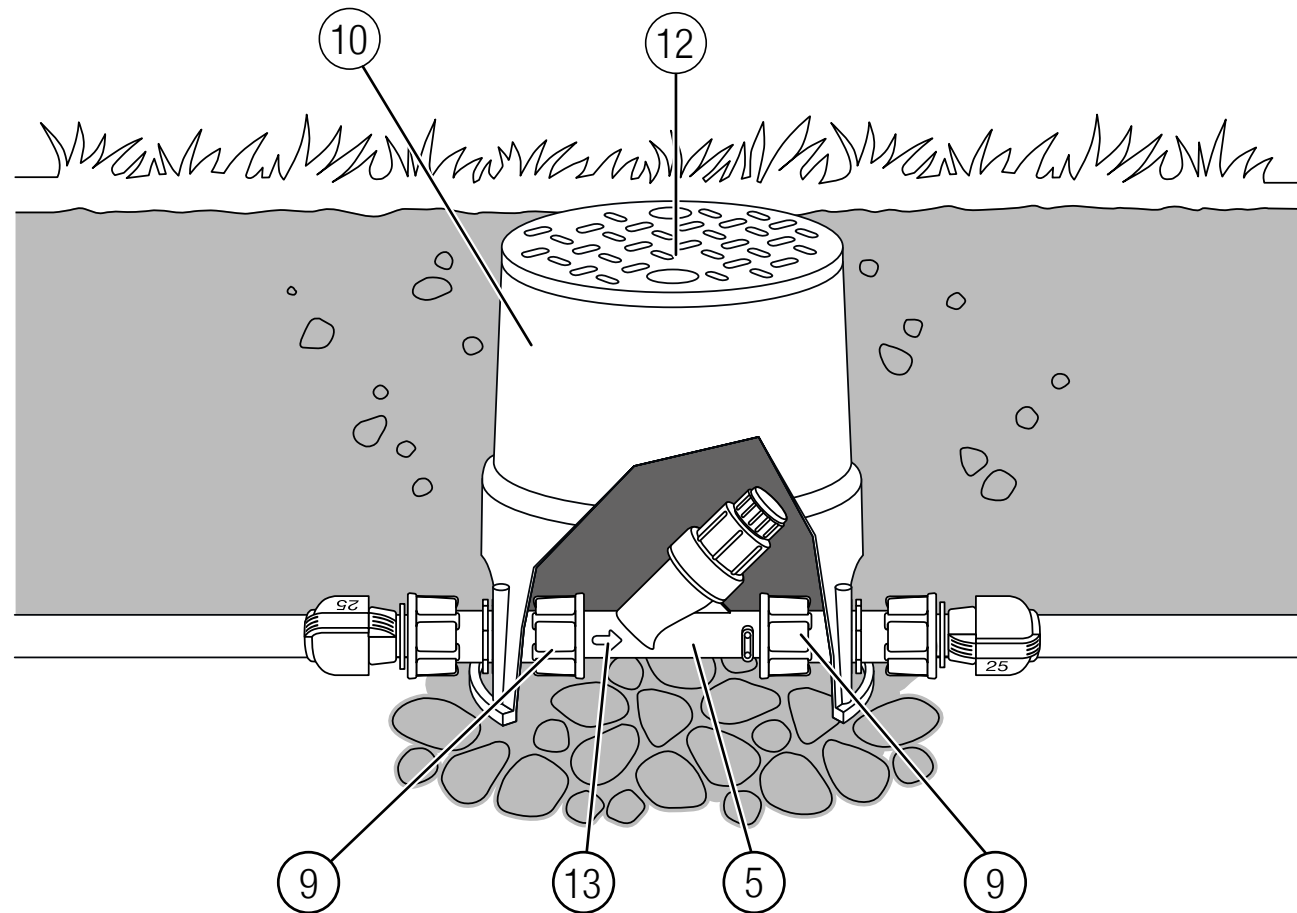


4. Place the valve shaft (10) on the coarse gravel layer (11).

Make sure that the top edge of the closed lid (12) of the valve shaft (10) is even with the ground.

5. Open the lid (12) of the valve shaft (10).

6. On each side, screw a connector (art. 2758) (9) finger-tight onto the connectors (art. 2763) (8).

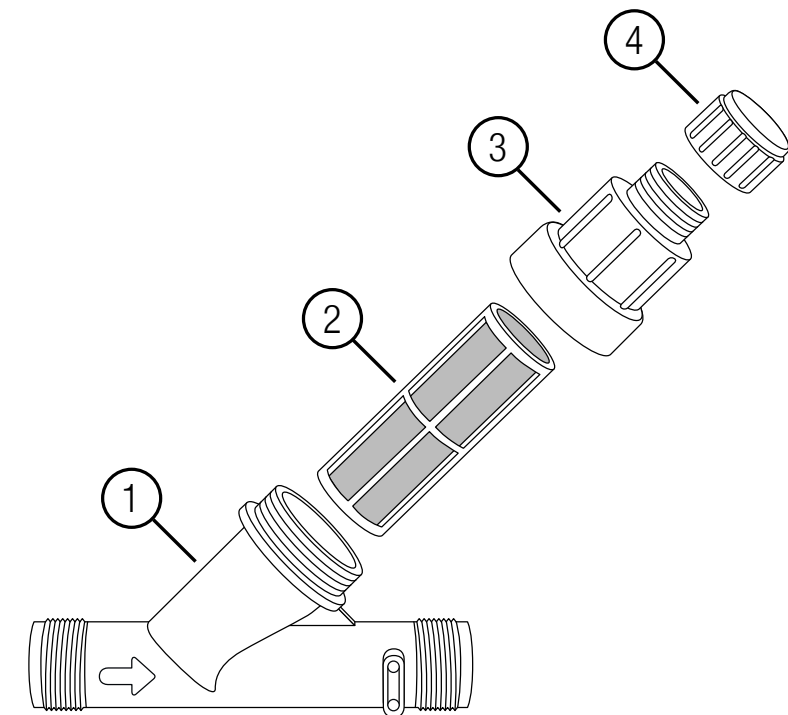


7. Place the pressure regulator (5) with the filter (2), (3) and (4) pointing upwards in the valve shaft (10) at the level of the side inlets.

Make sure to install the pressure regulator (5) correctly in the direction of the water flow indicated by the arrow (13) on the pressure regulator (5).

8. On each side, screw a connector (art. 2758) (9) finger-tight onto the male threads of the pressure regulator (5).
9. Close the lid (12) of the valve shaft (10).
10. Fill the hole with soil, and compact it carefully.

2. MAINTENANCE



2.1. To flush the pressure regulator

We recommend flushing the pressure regulator once a month.

1. Close the water supply.
2. Remove the cap (4).
3. Open the water supply for approx. 5 seconds.
4. Close the water supply
This cleans the filter (2) of coarse dirt.
→ If the filter is still dirty, repeat the last two steps.
5. Mount the cap (4).
6. Open the water supply for further operation.

2.2. To clean the pressure regulator

We recommend cleaning the pressure regulator manually once a year.

1. Close the water supply.
2. Open the housing ring (3).
3. Remove the filter (2) carefully.
4. Rinse the filter (2) thoroughly with clean water.
5. Insert the filter (2) into the pressure regulator.
6. Mount the housing ring (3) and tighten it hand-tight.
7. Open the water supply for further operation.

3. STORAGE

3.1. To put into storage

The pressure regulator as well as the irrigation system must be cleared of water before the frost period. We recommend the use of the **Drain Valve Set art. no. 2770-20**.

3.1.1 Drainage with the drain valve set (art. 2770-20)

1. Close the water supply.
2. Connect the drain valve set (art. no. 2770-20) according to its operator's manual.
3. Drain the irrigation system with a bicycle pump or an air compressor according to the operator's manual of the drain valve set.

The water drains out of the system.

3.1.2 Drainage with drain valves installed (art. 2760-20)

Notice:

The **drain valve art. no. 2760-20** must be installed at the lowest point of the irrigation system.

1. Close the water supply.
2. Open the irrigation valves in the valve shaft to depressurise the irrigation system.

Now the water drains from the system through the drain valves.

→ Also observe the instructions for draining irrigation valves, valve shafts and sprinkler systems.

4. TECHNICAL DATA

Pressure regulator	Unit	Value (art. 8200)
Input pressure	bar	1.38 - 10.34
Mesh size of filter	mesh	155
Output pressure	bar	max. 3.1
Water flow rate	l / h	45 - 4300
Diameter of male thread	"	1

5. ACCESSORIES / SPARE PARTS

GARDENA Connector 25 mm x 1" female thread	For the connection of the pressure regulator to the connecting pipes in case of an installation above ground.	Art. 2762
GARDENA Valve Shaft	For the installation below ground.	Art. 1290
GARDENA 1"x1"Connector	For the connection of the pressure regulator to the 25 mm x 1" connector in case of an installation below ground.	Art. 2758
GARDENA 25 mm x 1" Connector male thread	For the connection of 1"x1" connector to the connecting pipes in case of an installation below ground.	Art. 2763
GARDENA Connecting Pipe 25 mm	Pipes of the irrigation system	Art. 2700 / 2701 / 2718

6. SERVICE

6.1. Gardena service store

Find your local GARDENA service store on:

<https://www.gardena.com/int/support/find-store-or-service/>

6.2. Service addresses

6.2.1 United Kingdom

Contact formular: <https://www.gardena.com/uk/support/advice/contact/>

Phone: (+44) (0) 344 844 4558

Mail: info.gardena@husqvarna.co.uk

Address: Husqvarna UK Ltd
Preston Road
Aycliffe Industrial Park
Newton Aycliffe
County Durham
DL5 6UP

6.2.2 Australia

Contact formular: <https://www.gardena.com/au/support/advice/contact/>

Phone: (+ 61) (0) 2 4352 7400

Mail: customer.service@husqvarna.com.au

Address: Husqvarna Australia Pty. Ltd.
Locked Bag 5
Central Coast BC
NSW 2252

6.2.3 New Zealand

Contact formular: <https://www.gardena.com/nz/support/advice/contact/>

Phone: (+64) (0) 9 9202410

Mail: support.nz@husqvarna.co.nz

Address: Husqvarna New Zealand Ltd.
PO Box 76-437
Manukau City 2241

6.2.4 South Africa

Contact formular: <https://www.gardena.com/za/support/contact/>

Phone: (+27) 10 015 5750

Mail: service@gardena.co.za

Address: Husqvarna South Africa (Pty) Ltd
Lifestyle Business Park – Ground Floor Block A
Cnr Beyers Naude Drive and Ysterhout Road
Randpark Ridge, Randburg



GARDENA®

*Realise Your
Gardening
Dreams*