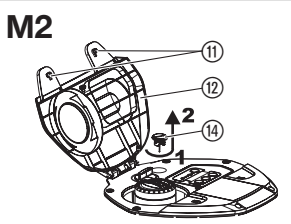
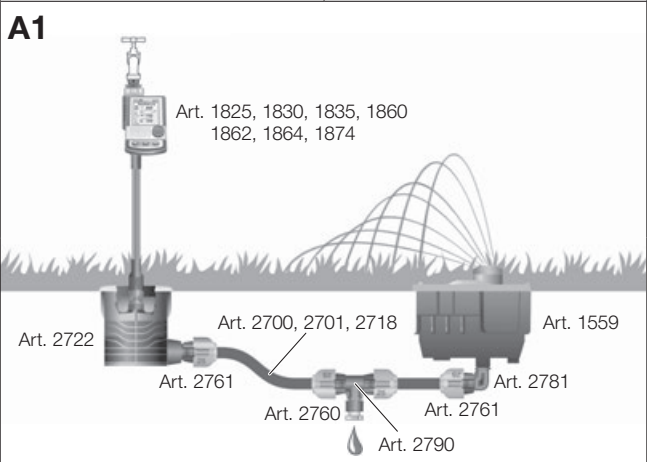
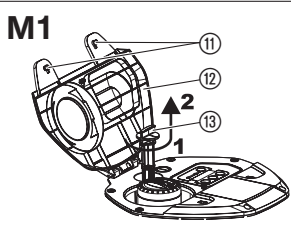
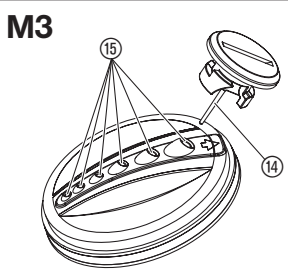
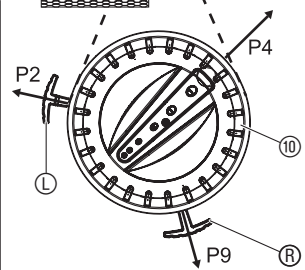
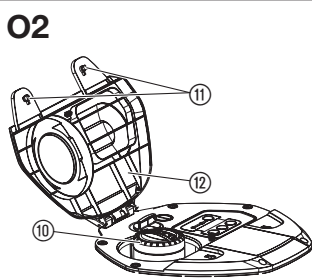
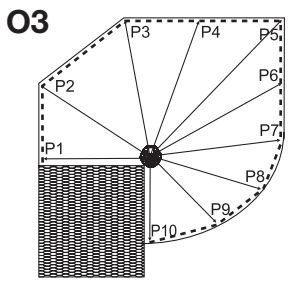
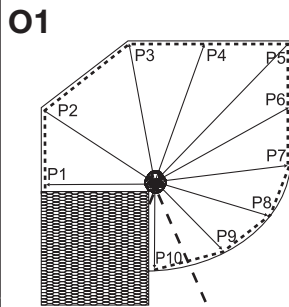
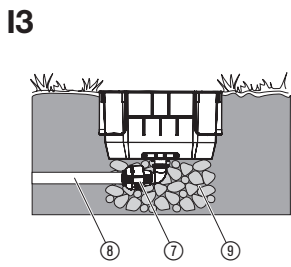
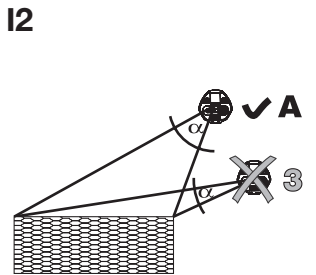
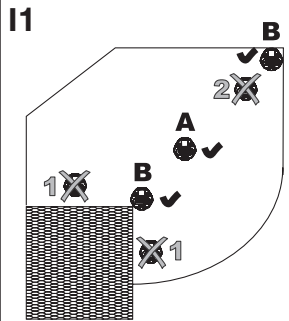
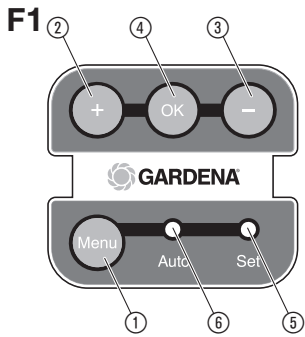


AquaContour automatic  
Art. 1559

**EN Operator's manual**  
Large-Area Pop-up Irrigation

---



# GARDENA Large-Area Pop-Up Irrigation

## AquaContour automatic

1. SAFETY	10
2. FUNCTION	11
3. INITIAL OPERATION	11
4. OPERATION	11
5. MAINTENANCE	12
6. STORAGE	13
7. TROUBLESHOOTING	13
8. TECHNICAL DATA	14
9. ACCESSORIES	14
10. SERVICE/WARRANTY	14

physical or mental abilities may use the product only if they are supervised or instructed by a responsible person. Children must be supervised to ensure that they do not play with the product. Never operate the product when you are tired, ill or under the influence of alcohol, drugs or medicine.

### Translation of the original instructions.



For safety reasons, children and young people under 16 as well as anyone who is not familiar with these operating instructions should not use the product. Persons with reduced

### Intended use:

The GARDENA Large-Area Pop-Up Irrigation forms part of the GARDENA Irrigation System and is designed to be used solely outdoors in domestic and private gardens to water lawns and garden areas.

**DANGER! It is not permitted to use the large-area pop-up irrigation for industrial or commercial applications and in conjunction with chemicals, food-stuffs, highly combustible or explosive substances.**

## 1. SAFETY

### IMPORTANT!

Read the operator's manual carefully before use and keep for future reference.

### Rechargeable battery:

The large-area pop-up irrigation unit contains rechargeable lithium-ion batteries, which are automatically charged via a built-in solar cell.

When the rechargeable battery is almost flat (e.g. due to soiling of the protective panel of the solar cell), irrigation will only cover a minimal range.

To fully charge the flat rechargeable battery it will take approx. 4 days of sunshine (8 hours each) or some 10 days with cloudy weather until the battery is fully charged again.

### Information about usage:

**The large-area pop-up irrigation should not be combined with other sprinklers in one irrigation line.**

If there is a change in the range of the largearea pop-up irrigation, the pressure conditions will change in the irrigation line, so altering the range of the other sprinkler.

→ Only use separate individual water channels for watering. Do not install in series with other sprinklers.

The ranges selected may vary with major fluctuations in pressure in the water pipe.

Pressure Tank Units (with pressure chamber) to supply water to the sprinkler are not recommended as they cause fluctuations in pressure with the switch-on/off pressure.

Sand and other abrasive substances in the water will result in faster wear and reduced output.

→ With water containing sand a Central Filter (e.g. GARDENA Central Filter Art. 1510) should be used.

Do not run over sprinklers installed level with ground with a lawn rake or aerator.



### DANGER! Cardiac arrest!

**This product makes an electromagnetic field while it operates. This field may under some conditions interfere with active or passive medical implants. To decrease the risk of conditions that can possibly injure or kill, we recommend persons with medical implants to speak with their physician and the medical implant manufacturer before you operate the product.**



### DANGER! Risk of suffocation!

**Small parts can be easily swallowed. There is also a risk that the polybag can suffocate toddlers. Keep toddlers away when you assemble the product.**

## 2. FUNCTION

### Control panel [Fig. F1]:

The GARDENA Large-Area Pop-up Irrigation AquaContour automatic can be used to water individual garden areas. A jet of water slowly turns in a circle to the end of the programmed sector, stops, and turns back again, altering the spray range depending on the ranges programmed. The control panel is used to programme the irrigation contour points.

- ① **Menu button:** Choose between programming mode (Set) and operating mode (Auto).
- ② **“+” button:** Increases irrigation range.
- ③ **“-” button:** Decreases irrigation range.
- ④ **OK button:** Stores the irrigation range selected.
- ⑤ **Set LED:** Indicates programming mode.
- ⑥ **Auto LED:** Indicates automatic operating mode. The LED flashes every 10 seconds.

## 3. INITIAL OPERATION

### Select correct location for Large-Area Pop-Up Irrigation [Fig. I1/I2]:

#### Correct location:

##### A Circle water distribution:

- With circle water distribution the large-area pop-up irrigation should be positioned as centrally as possible in the watering area to ensure that the irrigation width is not greatly affected by external influences such as wind.

##### B Sector water distribution:

- With sector water distribution the large-area pop-up irrigation should be positioned right at the edge of the watering area (e. g. at the corner of the house).
- The large-area pop-up irrigation must be positioned at a point in the watering sector from which it is possible to water the entire garden area required. The maximum range is 9 m (with 2 bar flow pressure at the irrigation unit).
- The large-area pop-up irrigation must be installed in a position which is sunny all year round to ensure the solar cell receives sufficient light.

#### Incorrect location:

- 1: No obstacles (e. g. walls, trees, etc.) should be located in the watering sector. It must be possible to access every contour point of the areas to be watered in a straight line. With the maximum range the spray height can reach approx. 5 m.
- 2: The minimum range is 2.5 m (at 2 bar). With circle water distribution the large-area pop-up irrigation must therefore be located 2.5 m from the edge in all directions (A). If this is not possible the large-area pop-up irrigation

should be positioned at the edge and the watering area will be a circle sector (B).

- 3: Erratic spray-range changes must be avoided. The smaller the angle  $\alpha$ , the greater the deviation from the programmed contour is.

### Install Large-Area Pop-Up Irrigation [Fig. I3]:

**Before installing the large-area pop-up irrigation, you must set up an above-ground test to check whether the largearea pop-up irrigation can actually water the required area at this location.**

The large-area pop-up irrigation has a 3/4" female thread and is connected to the 25 mm Connecting Pipe ⑥ Art. 2700/2701/2718 using the GARDENA L-piece ⑦ Art. 2781.

1. Install the above-ground test set-up and check whether the large-area pop-up irrigation can water the required area (see 4. OPERATION).
2. If the large-area pop-up irrigation has watered the required area in the test, install a pack of coarse gravel ⑧ approx. 20 cm x 20 cm x 20 cm in size underneath the unit.  
*This ensures proper functioning of the drain valve.*
3. Install the upper edge of the large-area pop-up irrigation level with the turf.  
*This prevents any damage when mowing the lawn.*

#### Remove protective plastic film of solar cell:

- Take off transportation protective plastic film from the protective panel of the solar cell.

## 4. OPERATION

### Select watering sector [Fig. O1]:

A watering sector from 25° to 360° can be selected. To prevent areas being watered unintentionally (e. g. house), the sector should first be selected roughly (slightly too small).

#### Roughly select sector:

1. Close water supply.
2. Turn the nozzle head ⑩ by hand to the middle of the watering sector (e. g. P4).

3. Roughly select watering sector: turn right sector stop ⑪ to right-hand side (e. g. P9) and left sector stop ⑫ to left-hand side (e. g. P2).

**Note:** When the water supply is open, the sector-stop is shifted during switching of the turn direction to its end position.

#### Re-adjust sector:

1. Open water supply.
2. Watch watering sector and re-adjust the sector-stops ⑬ and ⑭ according to the sector limits (P1 and P10) until

the change in direction matches the required irrigation limits. If watering in a complete circle, the two sector stops ① and ② must be completely pushed together between P1 and P10.

#### Anti-vandal device:

If the nozzle head is violently turned over the sector-stops then the vandalism protection is triggered. As soon as the water supply is open, the sprinkler moves in one direction until the set sector has been achieved again.

#### Programme contour points of irrigation sector [Fig. O2/F1/O3]:

The watering sector has to be selected before programming. Up to 50 contour points can be programmed with the large-area pop-up irrigation. The more points that are programmed, the more precisely the contour will be described (e.g. with a circular arc P7 – P10).

1. Open the two locks ⑪ and raise the cover ⑫.
2. Open water supply.  
*When using for the first time, the minimum range (2.5 m with a flow pressure of 2 bar at the sprinkler) is selected.*
3. Press **OK** button ④.  
*The green Auto LED ⑥ lights up.*
4. Press **Menu** button ①.  
*The red Set LED ⑤ lights up.*
5. Turn the nozzle head ⑩ on the orange ring **by hand** to the left-hand sector limit (in the example P1) and hold.
6. Use the two buttons “+” button ② and “-” button ③ to set the range so that it reaches P1.
7. Press **OK** button ④.  
*The green Auto LED ⑥ lights up for 1 second and the first point P1 has been stored.*
8. Turn the nozzle head ⑩ on the orange ring **by hand** to the next irrigation point (e.g. P2) and hold.
9. Use the two buttons “+” button ② and “-” button ③ to set the range so that it reaches P2 for example.

10. Press **OK** button ④.  
*The green Auto LED ⑥ lights up for 1 second and the point has been stored.*
11. Repeat the process from step 8 to 10 until the right-hand sector limit is reached (in the example P10).
12. Press **Menu** button ①.  
*The red Set LED ⑤ goes out, programming is complete, and the green Auto LED ⑥ lights up for 1 minute. The red Set LED then flashes every 8 seconds.*
13. Release nozzle head ⑩ and check contour area watered.
14. If the contour is watered correctly, close the water supply.
15. Close cover ⑫ and both locks ⑪.

#### Information about programming:

As soon as the first point is programmed, any existing programme will be deleted. After programming has been completed, no further points can be deleted or added later on. If the contour has not been set as required, reprogramming with more points will have to be carried out. If no button is pressed for 60 seconds during programming, programming will be automatically ended and the contour stored.

#### Start/end watering:

**Before irrigation can be started, the large-area pop-up irrigation must have been programmed.**

#### Start watering:

→ Fully open water supply.  
*Watering will start automatically and the contour of the watering sector previously programmed will be watered.*

#### End watering:

→ Close water supply.  
*Watering will end. The programme remains unchanged.*  
If no irrigation or programming is being made, the sprinkler goes into “sleep mode” (the green Auto-LED ⑥ does not light up and the red Set-LED blinks every 8 seconds).

## 5. MAINTENANCE

#### Clean dirt filter [Fig. M1]:

1. Open both locks ⑪ and raise the cover ⑫.
2. Turn the dirt filter ⑬ anticlockwise **1** and pull out carefully **2** (bayonet coupling).
3. Clean dirt filter ⑬ under clean running water.
4. Refit dirt filter ⑬ in reverse order.
5. Close cover ⑫ and both locks ⑪.

#### Clean nozzles [Fig. M2/M3]:

If the watering pattern is no longer even, the nozzles can be cleaned using the cleaning needle provided.

1. Open both locks ⑪ and raise the cover ⑫.
2. Turn the cleaning needle ⑭ (e.g. with a coin) anticlockwise through 180° **1** and pull out carefully **2** (bayonet coupling).

3. Clean nozzles ⑮ with cleaning needle ⑭.
4. Refit cleaning needle ⑭ in reverse order.
5. Close cover ⑫ and both locks ⑪.

#### Clean protective panel of solar cell:

To make sure that the rechargeable battery is always sufficiently charged, the protective panel of the solar cell has to be cleaned if soiled.

**No caustic/abrasive cleaning agents or hard objects should be used.**

→ Clean protective panel of solar cell with a damp cloth.

## 6. STORAGE

### To put into storage/Overwintering:



The large-area pop-up irrigation is frostproof is frostproof so it can be left in the ground during winter.

1. Close cover and both locks.
2. Close water supply.  
*The large-area pop-up irrigation is automatically emptied via the built-in drain valve.*

### Disposal:

(in accordance with RL2012/19/EC)

The product must not be disposed of to normal household waste. It must be disposed of in line with local environmental regulations.



### IMPORTANT!

Dispose of the product through or via your municipal recycling collection centre.

### Disposal of the battery:

The GARDENA battery contains lithium-ion cells that should not be disposed of with normal household waste at the end of its life.



### IMPORTANT!

→ Dispose of the batteries through or via your municipal recycling collection centre.

1. Discharge the lithium-ion cells completely (contact the GARDENA Service).
2. Protect the contacts on the lithium-ion cells against short circuits.
3. Dispose of the lithium-ion cells properly.

## 7. TROUBLESHOOTING

Problem	Possible Cause	Remedy
<b>Irrigation width smaller than on initial start-up</b>	Dirt filter soiled.	→ Clean dirt filter.
	Tap not opened sufficiently.	→ Open tap further.
	Water pressure too low.	→ Increase water pressure/water supply.
	Rechargeable batteries almost flat (Auto and Set LED flashing)/ protective panel of solar cells soiled.	→ Ensure solar cells are exposed to sufficient sunlight/ clean protective panel. If the rechargeable battery is almost flat, the range is reduced to the min. level.
	Large-area pop-up irrigation is in energy-saving mode (4 weeks without energy supply or operation).	→ Press <b>OK</b> button.
	Irrigation range is programmed incorrectly.	→ Reprogramme irrigation range.
<b>Watering pattern uneven</b>	Nozzles soiled.	→ Clean nozzles.
	Nozzle head soiled.	→ Clean nozzle head.
	Nozzle head damaged.	→ Contact GARDENA Service.
<b>Auto and Set LED flashing simultaneously</b>	Rechargeable batteries almost discharged.	→ Ensure solar cell is exposed to sufficient sunlight.
<b>No LED flashing</b>	Large-area pop-up irrigation is in energy-saving mode.	→ Press <b>OK</b> button.
	Rechargeable battery defective.	→ Contact GARDENA Service.
<b>Nozzle head leaking</b>	Soiling on nozzle head.	→ Press down nozzle head several times during operation.



**NOTE: For any other malfunctions please contact the GARDENA service department. Repairs must only be done by GARDENA service departments or specialist dealers approved by GARDENA.**

## 8. TECHNICAL DATA

<i>Large-Area Pop-Up Irrigation</i>	Unit	Value AquaContour automatic (Art. 1559)
<b>Rechargeable battery</b>		Lithium-ion cells 2150 mAh (charged via solar cell)
<b>Operating life of rechargeable battery (approx.)</b>	years	5
<b>Connection</b>		3/4" female thread
<b>Operating temperature range</b>	°C	5 – 60
<b>Pressure range</b>	bar	1 – 6
<b>Irrigation width</b>	m	2,5 – 9 (at 2 bar) / 4 – 10,5 (at 4 bar)
<b>Watering area</b>	m <sup>2</sup>	255 (at 2 bar) / 350 (at 4 bar)
<b>Watering sector</b>		25 – 360°
<b>Water flow rate with max. range (approx.)</b>	l/h	600 (at 2 bar) / 800 (at 4 bar)

## 9. ACCESSORIES

[Fig. A1]:

<b>GARDENA Water Computer</b>	For automatic watering control	<b>Art. 1825, 1830, 1835, 1860, 1862, 1864, 1874</b>
<b>GARDENA L-piece</b>	For connection to below-ground water supply	<b>Art. 2781</b>
<b>GARDENA Connecting Pipe 25 mm</b>	For below-ground installation of water supply	<b>Art. 2700, 2701, 2718</b>
<b>GARDENA Connector</b>	For below-ground installation of water supply	<b>Art. 2761</b>
<b>GARDENA Connecting Point</b>	For below-ground installation of water supply	<b>Art. 2722</b>
<b>GARDENA Drainage Valve</b>	For below-ground installation of water supply	<b>Art. 2760</b>
<b>GARDENA T-piece</b>	For below-ground installation of water supply	<b>Art. 2790</b>

## 10. SERVICE/WARRANTY

### Service:

Please contact the address on the back page.

### Warranty statement:

In the event of a warranty claim, no charge is levied to you for the services provided.

GARDENA Manufacturing GmbH grants a warranty for all original GARDENA new products for two years from the date of original purchase from the retailer, provided that the devices have been for private use only. This manufacturer's warranty does not apply to products acquired second hand. This warranty includes all significant defects of the product that can be proved to be material or manufacturing faults. This warranty is fulfilled by supplying a fully functional replacement product or by repairing the faulty product sent to us free of charge; we reserve the right to choose between these options. This service is subject to the following provisions:

- The product has been used for its intended purpose as per the recommendations in the operating instructions.
- Neither the purchaser nor a third party has attempted to open or repair the product.

- Only Original GARDENA replacement parts and wear parts have been used for operation.

- Presentation of the receipt.

Normal wear and tear of parts and components (such as blades, blade fixing parts, turbines, light bulbs, V-belts/toothed belts, impellers, air filters, spark plugs), visual changes, wear parts and consumables are excluded from the warranty.

This manufacturer's warranty is limited to replacement and repair of products in accordance with the abovementioned conditions. The manufacturer's warranty does not constitute an entitlement to lodge other claims against us as a manufacturer, such as for damages. This manufacturer's warranty does **not**, of course, affect statutory and contractual warranty claims against the dealer/retailer.

The manufacturer's warranty is governed by the law of the Federal Republic of Germany.

In case of a warranty claim, please return the faulty product, together with a copy of the receipt and a description of the fault, with postage paid to the service address.

### Consumables:

As a wear part the dirt filter is not covered by the guarantee.

### **DE Produkthaftung**

Wir weisen ausdrücklich darauf hin, dass wir in Übereinstimmung mit dem Produkthaftungsgesetz nicht für Schäden haften, die durch unsere Produkte entstehen, wenn diese unsachgemäß und nicht durch einen von uns autorisierten Servicepartner repariert wurden oder wenn keine Original GARDENA Teile oder von uns zugelassene Teile verwendet wurden.

### **EN Product liability**

In accordance with the German Product Liability Act, we hereby expressly declare that we accept no liability for damage incurred from our products where said products have not been properly repaired by a GARDENA-approved service partner or where original GARDENA parts or parts authorised by GARDENA were not used.

### **FR Responsabilité**

Conformément à la loi relative à la responsabilité du fait des produits défectueux, nous déclarons expressément par la présente que nous déclinons toute responsabilité pour les dommages résultant de nos produits, si lesdits produits n'ont pas été correctement réparés par un partenaire d'entretien agréé GARDENA ou si des pièces d'origine GARDENA ou des pièces agréées GARDENA n'ont pas été utilisées.

### **NL Productaansprakelijkheid**

Conform de Duitse wet inzake productaansprakelijkheid verklaren wij hierbij uitdrukkelijk dat wij geen aansprakelijkheid aanvaarden voor schade ontstaan uit onze producten waarbij deze producten niet zijn gerepareerd door een GARDENA-erkende servicepartner of waarbij geen originele GARDENA-onderdelen of onderdelen die door GARDENA zijn goedgekeurd zijn gebruikt.

### **SV Produktsvar**

I enlighet med tyska produktsvarslagar förklarar vi härmed uttryckligen att vi inte åtar oss något ansvar för skador som orsakas av våra produkter där produkterna inte har genomgått korrekt reparation från en GARDENA-godkänd servicepartner eller där originaldelar från GARDENA eller delar godkända av GARDENA inte använts.

### **DA Produktsvar**

I overensstemmelse med den tyske produktsvarslov erklærer vi hermed udtrykkeligt, at vi ikke påtager os noget ansvar for skader på vores produkter, hvis de pågældende produkter ikke er blevet repareret korrekt af en GARDENA-godkendt servicepartner, eller hvor der ikke er brugt originale GARDENA-reservedele eller godkendte reservedele fra GARDENA.

### **IT Responsabilità del prodotto**

In conformità con la Legge tedesca sulla responsabilità del prodotto, con la presente dichiariamo espressamente che decliniamo qualsiasi responsabilità per danni causati dai nostri prodotti qualora non siano stati correttamente riparati presso un partner di assistenza approvato GARDENA o laddove non siano stati utilizzati ricambi originali o autorizzati GARDENA.

### **ES Responsabilidad sobre el producto**

De acuerdo con la Ley de responsabilidad sobre productos alemana, por la presente declaramos expresamente que no aceptamos ningún tipo de responsabilidad por los daños ocasionados por nuestros productos si dichos productos no han sido reparados por un socio de mantenimiento aprobado por GARDENA o si no se han utilizado piezas originales GARDENA o piezas autorizadas por GARDENA.

### **PT Responsabilidade pelo produto**

De acordo com a lei alemã de responsabilidade pelo produto, declaramos que não nos responsabilizamos por danos causados pelos nossos produtos, caso os tais produtos não tenham sido devidamente reparados por um parceiro de assistência GARDENA aprovado ou se não tiverem sido utilizadas peças GARDENA originais ou peças autorizadas pela GARDENA.

### **PL Odpowiedzialność za produkt**

Zgodnie z niemiecką ustawą o odpowiedzialności za produkt, niniejszym wyraźnie oświadczamy, że nie ponosimy żadnej odpowiedzialności za szkody poniesione na skutek użytkowania naszych produktów, w przypadku gdy naprawa tych produktów nie była odpowiednio przeprowadzana przez zatwierdzonego przez firmę GARDENA partnera serwisowego lub nie stosowano oryginalnych części GARDENA albo części autoryzowanych przez tę firmę.



### **HU Termékszavatosság**

A németországi termékszavatossági törvénnyel összhangban ezennel nyomatékosan kijelentjük, hogy nem vállalunk felelősséget a termékeinkben keletkezett olyan károkért, amelyek valamely GARDENA által jóváhagyott szervizpartner által nem megfelelően végzett javításból adódtak, vagy amely során nem eredeti GARDENA alkatrészeket vagy a GARDENA által jóváhagyott alkatrészeket használtak fel.

### **CS Odpovědnost za výrobek**

V souladu s německým zákonem o odpovědnosti za výrobek tímto výslovně prohlašujeme, že nepřijímáme žádnou odpovědnost za poškození vzniklá na našich výrobcích, kdy zmíněné výrobky nebyly řádně opraveny schváleným servisním partnerem GARDENA nebo kdy nebyly použity originální náhradní díly GARDENA nebo náhradní díly autorizované společností GARDENA.

### **SK Zodpovednosť za produkt**

V súlade s nemeckými právnymi predpismi upravujúcimi zodpovednosť za výrobok týmto výslovne prehlasujeme, že nenesieme žiadnu zodpovednosť za škody spôsobené našimi výrobkami, v prípade ktorých neboli náležite opravy vykonané servisným partnerom schváleným spoločnosťou GARDENA alebo neboli použité diely spoločnosti GARDENA alebo diely schválené spoločnosťou GARDENA.

### **EL Ευθύνη προϊόντος**

Σύμφωνα με τον γερμανικό νόμο περί Ευθύνης για τα Προϊόντα, με το παρόν δηλώνουμε ρητώς ότι δεν αποδεχόμαστε καμία ευθύνη για τυχόν ζημιές που προκύπτουν από τα προϊόντα μας εάν αυτά δεν έχουν επισκευαστεί σωστά από κάποιον εγκεκριμένο συνεργάτη επισκευών της GARDENA ή εάν δεν έχουν χρησιμοποιηθεί αυθεντικά εξαρτήματα GARDENA ή εξαρτήματα εγκεκριμένα από την GARDENA.

### **SL Odgovornost proizvajalca**

V skladu z nemškimi zakoni o odgovornosti za izdelke, izrecno izjavljajo, da ne sprejemamo nobene odgovornosti za škodo, ki jo povzročijo naši izdelki, če teh niso ustrezno popravili GARDENINI odobreni servisni partnerji ali pri tem niso bili uporabljeni originalni GARDENINI nadomestni deli ali GARDENINIMI homologiranimi nadomestnimi deli.

### **HR Pouzdanost proizvoda**

Sukladno njemačkom zakonu o pouzdanosti proizvoda, ovime izričito izjavljujemo kako ne prihvaćamo nikakvu odgovornost za oštećenja na našim proizvodima nastala uslijed neispravnog popravka od strane servisnog partnera kojeg odobrava GARDENA ili uslijed nekorištenja originalnih GARDENA dijelova ili dijelova koje odobrava GARDENA.

### **RO Răspunderea pentru produs**

În conformitate cu Legea germană privind răspunderea pentru produs, declarăm în mod expres prin prezentul document că nu acceptăm nicio răspundere pentru defecțiunile suferite de produsele noastre atunci când acestea nu au fost reparate în mod corect de un atelier de service partener, aprobat de GARDENA, sau când nu au fost utilizate piese GARDENA originale sau piese autorizate de GARDENA.

<p><b>DE EU-Konformitätserklärung</b> Der Unterzeichnende bestätigt als Bevollmächtigter des Herstellers, der GARDENA Germany AB, PO Box 7454, S-103 92, Stockholm, Schweden, dass das (die) nachfolgend bezeichnete(n) Gerät(e) in der von uns in Verkehr gebrachten Ausführung die Anforderungen der harmonisierten EU-Richtlinien, EU-Sicherheitsstandards und produktspezifischen Standards erfüllt/erfüllen. Bei einer nicht mit uns abgestimmten Änderung des (der) Geräte(s) verliert diese Erklärung ihre Gültigkeit.</p>	<p><b>PL Deklaracja zgodności UE</b> Niziej podpisany potwierdza jako upoważniony przedstawiciel producenta, spółki GARDENA Germany AB, PO Box 7454, S-103 92, Sztokholm, Szwecja, że określone poniżej urządzenie/-nia w wersji wprowadzonej przez nas do obrotu spełnia/-niają wymogi zharmonizowanych dyrektyw UE, norm bezpieczeństwa UE oraz norm dotyczących konkretnych produktów. Niniejsza deklaracja traci ważność w przypadku wprowadzania niezgodnych z nami zmian urządzenia/ń.</p>
<p><b>EN EC Declaration of Conformity</b> The undersigned hereby certifies as the authorized representative of the manufacturer, GARDENA Germany AB, PO Box 7454, S-103 92, Stockholm, Sweden, that, when leaving our factory, the unit(s) indicated below is/are in accordance with the harmonised EU guidelines. EU standards of safety and product specific standards. This certificate becomes void if the unit(s) is/are modified without our approval.</p>	<p><b>HU EU megfelelési nyilatkozat</b> Az alulírott, a GARDENA Germany AB, Pf. 7454, S-103 92, Stockholm, Svédország megbízotti minőségében megerősíti, hogy az általunk alábbi kivételben forgalomba hozott, lent nevezett eszköz(ök) megfelel(nek) az uniós irányelvekkel összhangba hozott nemzeti előírások követelményeinek, az EU biztonsági szabványainak és a konkrét termékre vonatkozó szabványoknak. Az eszköz(ök) nek velünk nem egyeztetett módosítás esetén ez a nyilatkozat érvényét veszti.</p>
<p><b>FR Déclaration de conformité CE</b> Le soussigné déclare, en tant que mandataire du fabricant, la GARDENA Germany AB, PO Box 7454, S-103 92, Stockholm, Suède, qu'à la sortie des ses usines le matériel neuf désigné ci-dessous était conforme aux prescriptions des directives européennes énoncées ci-après et conforme aux règles de sécurité et autres règles qui lui sont applicables dans le cadre de l'Union européenne. Toute modification portée sur ce(s) produit(s) sans l'accord express de notre part supprime la validité de ce certificat.</p>	<p><b>CS EU prohlášení o shodě</b> Podepsaná osoba způsobiloučn výrobem GARDENA Germany AB, PO Box 7454, S-103 92, Stockholm, Svdsko potvrzuje, že v nsledujícím uvedeny(-) pstroj(-e) v proveden nmi uvedenm na trh spluj/spluj požadavky smrnice EU, bezpenostních norem EU a norem specifickch pro výrobek. V ppad zmny pstroje(-u), kter s nmi nebyla dohodnuta, ztrte toto prohlsen svou platnost.</p>
<p><b>NL EU-conformiteitsverklaring</b> De ondergetekende bevestigt als gevolmachtigde van de fabrikant, GARDENA Germany AB, PO Box 7454, S-103 92, Stockholm, Zweden, dat het/de onderstaand vermelde apparaat/apparaten in de door ons in de handel gebrachte uitvoering voldoet/voldoen aan de eisen van de geharmoniseerde EU-richtlijnen, EU-veiligheidsnormen en productspecifieke normen. Bij een niet met ons afgestemde verandering van het apparaat/de apparaten verliest deze verklaring haar geldigheid.</p>	<p><b>SK EU vyhlsenie o zhode</b> Dolu podpsan potvrzuje, ako splnomocnen zstupca vrobcu, GARDENA Germany AB, PO Box 7454, S-103 92, Sztokholm, Svdsko, že ďalej oznaen zariadenie/a vo vyhotoven uvedenom na trh spluj/spluj požiadavky harmonizovanej smernice EU, bezpenostnch štandardov EU a predpisov, specifickch pre dan vrobky. Pri zmene zariadenia/zariaden, ktor nebola odsuhlasen našou spoločnosťou, stráca toto vyhlsenie platnosť.</p>
<p><b>SV EU-försäkran om överensstämmelse</b> Undertecknad intygar som befyllmäktigad företrädare för tillverkaren, GARDENA Germany AB, PO Box 7454, S-103 92, Stockholm, Sverige, att nedan angivna apparat/medan angivna apparater i det utförande i var slppt på marknaden, uppfyller fordringarna i de harmoniserade EU-direktiv, EU-säkerhetsstandarderna och de produktspecifika standarderna. Denna försäkran upphör att gälla vid en ändring av apparaten/apparaterna som inte har stmts av med oss.</p>	<p><b>EL Δηλωση συμμόρφωσης EE</b> Ο υπογεγραμμένος βεβαιώνει ως πληρεξούσιος του κατασκευαστή, της εταιρείας GARDENA Germany AB, T.Θ. 7454, S-103 92, Στοκχόλμη, Σουηδία, ότι η (οι) παρακάτω αναφερόμενη(ες) συσκευή(ες) στην έκδοσή που τίθεται από εμάς σε κυκλοφορία πληροί/πληρούν τις απαιτήσεις των εναρμονισμένων οδηγιών της ΕΕ, προτύπων ασφαλείας της ΕΕ και των ειδικών για το προϊόν προτύπων. Σε περίπτωση τροποποίησης της (των) συσκευή(ών) χωρίς προηγούμενη συνεννόηση με την εταιρεία μας παύει να ισχύει η δήλωσή.</p>
<p><b>DA EU-overensstemmelseserklring</b> Underskriveren bekrfter som fuldmgtig for producenten, GARDENA Germany AB, PO Box 7454, S-103 92, Stockholm, Sverige, at det (de) efterfølgende betegnede apparat(er) i den af os markedsførte udførelse opfylder kravene i de harmoniserede EU-direktiver, EU-sikkerhedsstandarder og produktspecifikke standarder. Forretages en ændring af apparatet/apparatene, der ikke er aftalt med os, mister denne erklring sin gyldighed.</p>	<p><b>SL Izjava EU o skladnosti</b> Spodaj podpisani kot pooblašenec proizvajalca GARDENA Germany AB, PO Box 7454, S-103 92, Stockholm, Švedska, potrjuje, da v nadaljevanju označene naprave v izvedbi, v kakršni smo jih dali v promet, izpolnjujejo zahteve usklajenih direktiv EU, varnostnega standarda EU in standardov, ki veljajo za posamezne izdelke. V primeru spremembe naprave, ki ni usklajena z nami, ta izjava neha veljati.</p>
<p><b>IT Dichiarazione di conformità UE</b> Il sottoscritto, in quanto soggetto autorizzato dal produttore, GARDENA Germany AB, PO Box 7454, S-103 92, Stoccolma, Svezia, dichiara che l'apparecchio/gli apparecchi di seguito denominato/i, nella versione da noi immessa in commercio, soddisfa/no i requisiti delle direttive UE armonizzate, degli standard di sicurezza europei e degli standard specifici per il prodotto. La presente dichiarazione perde di validità in caso di modifica dell'apparecchio/degli apparecchi non concordata con noi.</p>	<p><b>HR EU izjava o skladnosti</b> Dolje potpisani kao opunomoćnik proizvođača, tvrtke GARDENA Germany AB, PO Box 7454, S-103 92, Stockholm, Švedska, potvrđujemo da nije navedeni uređaj(i) odgovarajuće izvedbe koji/koje smo iznijeli na tržište ispunjavaju kriterije usklađenih direktiva EU i sigurnosnih standarda EU kao i standarda koji se tiču proizvoda. Ova izjava gubi valjanost u slučaju izmjena uređaja koji nisu prethodno ugovorene s nama.</p>
<p><b>ES Declaración de conformidad de la UE</b> El firmante confirma, en calidad de apoderado del fabricante GARDENA Germany AB, PO Box 7454, S-103 92 Estocolmo (Suecia), que el/los aparato(s) mencionado(s) a continuación cumple(n), en la versión lanzada al mercado por nuestra empresa, los requisitos de las directivas de la UE armonizadas, los estándares de seguridad de la UE y los estándares específicos del producto. La presente declaración perderá su validez si se modifica(n) el/los aparato(s) sin previa aprobación por nuestra parte.</p>	<p><b>RO Declarație de conformitate UE</b> Semnatura, în calitate sa de împuternicit al productorului GARDENA Germany AB, PO Box 7454, S-103 92, Stockholm, Suedia, confirm c aparatul (aparatele) descrise în cele ce urmeaz, în execuia pus de noi pe pia îndeplinește (îndeplinec) cerințele directivelor armonizate UE, ale standardelor de sigurană UE și ale standardelor specifice produsului. În cazul modificrii fr aprobarea noastr prealabil a aparatului (aparatoarel), aceast declarație își pierde valabilitatea.</p>
<p><b>PT Declarao CE de Conformidade</b> O abaixo-assinado, na qualidade de representante do fabricante, GARDENA Germany AB, PO Box 7454, S-103 92, Stockholm, Schweden, confirma que o(s) aparelho(s) a seguir designado(s) no modelo lanado por ns no mercado cumpre/cumprem os requisitos das diretivas UE harmonizadas, as normas de segurana UE e as normas especficas para estes produtos. Esta declarao perde a sua validade se forem realizadas alteraes no(s) aparelho(s) sem o nosso consentimento.</p>	



**Deutschland/Germany**  
GARDENA Manufacturing GmbH  
Central Service  
Hans-Lorenser-Straße 40  
D-89079 Ulm  
Produktfragen:  
(+49) 731 490-123  
Reparaturen:  
(+49) 731 490-290  
service@gardena.com  
http://www.gardena.com

**Albania**  
KRAFT SHPK  
Autostrada Tirane-Durres  
Km 7  
1051 Tirane  
Phone: (+355) 69 877 7821  
info@krafft.al

**Argentina**  
ROBERTO C. RUMBO S.R.L.  
Predio Norlog  
Lote 7  
Benavidez, ZC: 1621  
Buenos Aires  
ventas@rumbosrl.com.ar

**Armenia**  
AES Systems LLC  
Marshal Babajanyan Avenue 56/2  
0022 Yerevan  
Phone: (+374) 60 651 651  
mishohanyan@icloud.com

**Australia**  
Husqvarna Australia Pty. Ltd.  
Locked Bag 5  
Central Coast BC  
NSW 2252  
Phone: (+61) (0) 2 4352 7400  
customer.service@  
husqvarna.com.au

**Austria/Österreich**  
Husqvarna Austria GmbH  
Industriezeile 36  
4010 Linz  
Tel.: (+43) 732 77 01 01-485  
service.gardena@  
husqvarnagroup.com

**Azerbaijan**  
Proqres Kúsusí Firması  
Alyar Alyevy 212, Baku, Azerbaijan  
Sales: +994 70 326 07 14  
Aftersales: +994 77 326 07 14  
www.progress-garden.az  
info@progress-garden.az

**Bahrain**  
M.H. Al-Mahroos  
BUILDING 208, BLOCK 356,  
ROAD 328  
Salihiya  
Phone: +973 1740 8090  
almahroos@almahroos.com

**Belarus/Беларусь**  
ООО «Мастер Гарден»  
220118, г. Минск,  
улица Шаранговича, дом 7а  
Тел. (+375) 17 257 00 33  
mg@mastergarden.by

**Belgium**  
Husqvarna Belgium nv  
Gardena Division  
Leuvensesteenweg 542  
Planet II E  
1930 Zaventem  
België

**Bosnia/Herzegovina**  
Silk Trade d.o.o.  
Poslovna Zona Vila Br. 20  
Phone: (+387) 61 165 593  
info@silktrade.com.ba

**Brazil**  
Nordtech Maquinas e Motores Ltd.  
Avenida Juscelino Kubitschek de  
Oliveira  
Curitiba  
3003 Brazil  
Phone: (+55) 41 3595-9600  
contacto@nordtech.com.br  
www.nordtech.com.br

**Bulgaria**  
AGROLAND България АД  
бул. 8 Декември, № 13  
Офис 5  
1700 Студентски град  
София  
Тел.: (+359) 24 66 6910  
info@agroland.eu

**Canada/USA**  
GARDENA Canada Ltd.  
100 Summerlea Road  
Brampton, Ontario L6T 4X3  
Phone: (+1) 905 792 93 30  
info@gardenacanada.com

**Chile**  
REPRESENTACIONES JCE S.A.  
2286 Avenida General Oscar Bonilla  
Concepcion  
Phone: (+56) 2 2414 2600  
contacto@jce.cl

**China**  
Husqvarna (Shanghai)  
Management Co., Ltd.  
富世华 (上海) 管理有限公司  
3F, Benq Square 8,  
No207, Song Hong Rd.,  
Chang Ning District,  
Shanghai, P.R.C. 200335  
上海市长宁区淞虹路207号明  
基广场5座3楼, 邮编: 200335

**Colombia**  
Equipos de Toyama Colombia SAS  
Cra. 68 D № 25 B 86 Of. 618  
Edificio Torre Central  
Bogota  
Phone: +57 (1) 703 9520  
+57 (1) 703 9522  
servicioalcliente@toyama.co.ck  
www.toyama.com.co

**Costa Rica**  
Exim CIA Costa Rica  
Calle 25A, B°. Montealegre  
Zapote  
San José  
Costa Rica  
Phone: (+506) 2221-5654  
(+506) 2221-5659  
eximostarica@gmail.com

**Croatia**  
Husqvarna Austria GmbH  
Industriezeile 36  
4010 Linz  
Phone: (+43) 732 77 01 01-485  
service.gardena@  
husqvarnagroup.com

**Cyprus**  
Pantelis Papadopoulos S.A.  
92 Athinon Avenue  
Athens  
10442 Greece  
Phone: (+30) 21 0519 3100  
info@papadopoulos.com.cy

**Czech Republic**  
Gardena  
Service Center Vrbno  
c/o Husqvarna  
Manufacturing CZ s.r.o.  
Jesenická 146  
79326 Vrbno pod Prádemem  
Phone: 800 100 425  
servis@gardena.cz

**Denmark**  
GARDENA DANMARK  
Lejrvej 19, st.  
3500 Værløse  
Tlf.: (+45) 70 26 47 70  
husqvarna@husqvarna.dk  
www.gardena.com/dk

**Dominican Republic**  
BOSQUESA, S.R.L  
Carretera Santiago Lincey  
Km. 5 ½  
Esquina Copal II,  
Santiago De Los Caballeros  
51000 Dominican Republic  
Phone: (+1) 809-562-0476  
contacto@bosquesa.com.do

**Egypt**  
Universal Agencies Co  
26, Abdel Hamid Lofly St.  
Giza  
Phone: 3 761 5757  
https://gardeningegypt.com/  
hany.masoud@univag.org

**Estonia**  
Husqvarna Eesti OÜ  
Valdeku 132  
EE-11216 Tallinn  
info@gardena.ee

**Finland**  
Oy Husqvarna Ab  
Gardena Division  
Lautatarhankatu 8 B / PL 3  
00581 HELSINKI  
www.gardena.fi

**France**  
Husqvarna France  
9/11 Allée des pierres mayettes  
92635 Gennevilliers Cedex  
France  
http://www.gardena.com/fr  
N° AZUR: 0 810 00 78 23  
(Prix d'un appel local)

**Georgia**  
Transporter LLC  
#70, Bolnisskhilli street  
0159 Tbilisi, Georgia  
Number: (+995) 322 14 71 71  
info@transporter.com.ge  
www.transporter.com.ge

**Service Address and  
Importer to Great Britain**  
Husqvarna UK Ltd  
Preston Road  
Aycliffe Industrial Park  
Newton Aycliffe  
County Durham  
DL5 6UP  
Phone: (+44) (0) 344 844 4558  
info.gardena@husqvarna.co.uk

**Greece**  
Π.ΠΑΠΑΔΟΠΟΥ/ΟΣ ΑΕΒΕ  
Λεωφ. Αθηνών 92  
Αθήνα  
T.K.104 42  
Ελλάδα  
Τηλ. (+30) 210 5193 100  
info@papadopoulos.com.gr

**Hong Kong**  
Tung Tai Company  
151-153 Hol Bun Road  
Kwun Tong, Kowloon  
Hong Kong  
Phone: (+852) 3583 1662  
admin@tungtaico.com

**Hungary**  
Husqvarna Magyarország Kft.  
Ezred u. 1 – 3  
1044 Budapest  
Phone: (+36) 1 251-4161  
vevoszolgalat.husqvarna@  
husqvarna.hu

**Iceland**  
BYKO ehf.  
Skemmuvegi 2a  
200 Kópavogur  
Phone: (+354) 515 4000  
byko@byko.is

MHG Verslun ehf  
Vikurhvarf 8  
203 Kópavogur  
Phone: (+354) 544 4656

**India**  
B K RAMAN AND CO  
Plot No. 185, Industrial Area,  
Phase-2, Ram Darbar  
Chandigarh  
160002 India  
Phone: (+91) 98140 06530  
raman@aganhardware.com

**Iraq**  
Alshiem Alakhdar Company  
Al-Faysaleeh, Near Estate Bank  
Mosul  
Phone: (+964) 78 18 18 46 75

**Ireland**  
Lifey Distributors Ltd.  
309 NW Business Park, Ballycoolen  
15 Dublin  
Phone: (+353) 1 824 2600  
info@lifeyd.com

**Israel**  
HAGARIN LTD.  
2 Nahal Harif St.  
8122201 Yavne  
internet@hagarin.co.il  
Phone: (+972) 8-932-0400

**Italy**  
Husqvarna Italia S.p.A.  
Via Santa Vecchia 15  
23868 VALMADRERA (LC)  
Phone: (+39) 0341.203.111  
assistenza.italia@it.husqvarna.com

**Japan**  
Husqvarna Zenoah Co. Ltd. Japan  
1-9 Minamidai, Kawagoe  
350-1165 Saitama  
Japan  
gardena-jp@husqvarnagroup.com

**Kazakhstan**  
ТОО "Ламэд"  
Russian  
Адрес: Қазақстан, г. Алматы,  
ул. Тәжібаевой, 155/1  
Тел.: (+7) (727) 355 64 00  
(+7) (700) 355 64 00  
lamed@lamed.kz

*Kazakh*  
Мекен-жайы: Қазақстан,  
Алматы қ.,  
көш. Тәжібаевой, 155/1  
Тел.: (+7) (727) 355 64 00  
(+7) (700) 355 64 00  
lamed@lamed.kz

**Korea**  
Kyung Jin Trading Co., Ltd  
107-4, Sunduk Blvd, Yangjae-Dong  
Secho-Gu  
137-891 Seoul  
Phone: (+82) 2 574 6300  
kjh@kjh.co.kr

**Kuwait**  
Palms Agro Production Co  
Al Rai - Fourth Ring Road – Block 56.  
P.O Box: 1976 Safat  
13020 Al-Rai  
Phone: 24 73 07 45  
info@palms-kw.com

**Kyrgyzstan**  
ООСО Алые МакI  
Ав. Молodaya Guardia 83  
720014 Bishkek  
Phone: (+996) 312 322115

**Latvia**  
Husqvarna Latvija SIA  
Ulbrokas 19A  
LV-1021 Riga  
info@gardena.lv

**Lebanon**  
Technomec  
Safra Highway (Beirut – Tripoli) Center  
622 Mezher Bldg.  
P.O.Box 215  
Jounieh  
Phone: (+961) 9 853527  
(+961) 3 855481  
tecnomec@idm.net.lb

**Lithuania**  
UAB Husqvarna Lietuva  
Atleities pl. 77C  
LT-52104 Kaunas  
info@gardena.lt

**Luxembourg**  
Magasin Jules Neuberger  
39, rue Jacques Stas  
Luxembourg - Gasperich 2549  
Case Postale No. 12  
Luxembourg 2010  
Phone: (+352) 40 14 01  
api@neuberger.lu

**Malaysia**  
Glomedic International Sdn Bhd  
Jalan Ruang No. 30  
Shah Alam, Selangor  
40150 Malaysia  
Phone: (03)-7734 7997  
oase@glomedic.com.my

**Malta**  
I.V. Portelli & Sons Ltd.  
85, 86, Triq San Pawl  
Rabat - RBT 1240  
Phone: (+356) 2145 4289

**Mauritius**  
Espace Maison Ltée  
La City Trianon, St Jean  
Quatre Bornes  
Phone: (+230) 401 6950  
info@espacemaison.mu

**Mexico**  
AFOSA  
Av. Lopez Mateos Sur # 5019  
Col. La Calma 45070  
Zapopan, Jalisco, Mexico  
Phone: (+52) 33 3818-3434  
isolis@afosa.com.mx

**Moldova**  
Convel SRL  
Republica Moldova,  
mun. Chisinau,  
sos. Muncesti 284  
Phone: (+373) 22 857 126  
www.convel.md

**Mongolia**  
Soyolj Gardening Shop  
Narnii Rd  
Ulaanbaatar  
14230 Mongolia  
Phone: +976 7777 5080  
soyolj@magicnet.mn

**Morocco**  
Proekip  
64 Rue de la Participation  
Casablanca-Roches Noires  
20303 Morocco  
Phone: (+212) 661342107  
hicham.hafani@proekip.ma

**Netherlands**  
Husqvarna Nederland B.V.  
GARDENA Division  
Postbus 50131  
1305 AC ALMERE  
Phone: (+31) 36 521 00 10  
info@gardena.nl

**Neth. Antilles**  
Jonka Enterprises N.V.  
P.O. Rosa Weg 196  
P.O. Box 8200  
Curaçao  
Phone: (+599) 9 767 66 55  
info@jonka.com

**New Zealand**  
Husqvarna New Zealand Ltd.  
PO Box 76-437  
Manukau City 2241  
Phone: (+64) (0) 9 9202410  
support.nz@husqvarna.co.nz

**North Macedonia**  
Sinpeks d.o.o.  
Ul. Kravarski Pat Bb  
7000 Bitola  
Phone: (+389) 47 20 85 00  
sinpeks@mt.net.mk

**Norway**  
Husqvarna Norge AS  
Gardena Division  
Trøskenveien 36  
1708 Sarpsborg  
info@gardena.no

**Northern Cyprus**  
Mediterranean Home & Garden  
No 150 Alsancaik, Karaoglanoglu  
Çağdesi  
İskele  
Phone: (+90) 392 821 33 80  
info@medgardener.com

**Oman**  
General Development Services  
PO 1475, PC - 111  
Seeb  
111 Oman  
Phone: 96824582816  
gdsoman@gdsoman.com

**Paraguay**  
Agrofield SRL  
AV. CHOFFERES DEL CHACO  
1449 C/25 DE MAYO  
Asuncion  
Phone: (+595) 21 608 656  
consultas@agrofield.com.py

**Peru**  
Sierras y Herramientas  
Forestal SAC  
Av. Las Gaviotas 833, Chorrillos  
Lima  
Phone: (+51) 1 2520252  
supervisorventas1@siersac.com  
www.siersac.com

**Philippines**  
Royal Dragon Traders Inc  
10 Linaw Street, Barangay Saint  
Peter  
Quezon City  
1114 Philippines  
Phone: (+63) 2 7426893  
aida.fernandez@rdti.com.ph

**Poland**  
Gardena  
Service Center Vrbno  
c/o Husqvarna  
Manufacturing CZ s.r.o.  
Jesenická 146  
79326 Vrbno pod Prádedem  
Czech Republic  
Phone: (22) 336 78 90  
servis@gardena.pl

**Portugal**  
Husqvarna Portugal, SA  
Lagoa - Albarraque  
2635 - 595 Rio de Mouro  
Phone: (+351) 21 922 85 30  
Fax : (+351) 21 922 85 36  
info@gardena.pt

**Romania**  
Madex International SRL  
Soseaua Odaei 117 - 123,  
RO 013603 Bucuresti, S1  
Phone: (+40) 21 352 7603  
madex@ines.ro

**Russia/Россия**  
ООО „Хусварна“  
141400, Московская обл.,  
г. Химки,  
улица Ленинградская,  
владение 39, стр.6  
Бизнес Центр  
„Химки Бизнес Парк“,  
помещение ОБО\_04  
http://www.gardena.ru

**Saudi Arabia**  
SACO  
Takhassusi Main Road  
P.O. Box: 86387  
Riyadh 12863  
40011 Saudi Arabia  
Phone: (966) 11 482 8877  
webmaster@saco-ksa.com

**Serbia**  
Domel d.o.o.  
Slobodana Đurića 21  
11000 Belgrade  
Phone: (+381) 11 409 57 12  
office@domel.rs

**Singapore**  
Hy-Ray PRIVATE LIMITED  
40 Jalan Pemimpin  
#02-08 Tat Ann Building  
Singapore 577185  
Phone: (+65) 6253 2277  
info@hyray.com.sg

**Slovak Republic**  
Gardena  
Service Center Vrbno  
c/o Husqvarna  
Manufacturing CZ s.r.o.  
Jesenická 146  
79326 Vrbno pod Prádedem  
Phone: 0800 154044  
servis@gardena.sk

**Slovenia**  
Husqvarna Austria GmbH  
Industriezeile 36  
4010 Linz  
Phone: (+43) 732 77 01 01-485  
service.gardena@  
husqvarnagroup.com

**South Africa**  
Husqvarna South Africa (Pty) Ltd  
Lifestyle Business Park – Ground  
Floor Block A  
Cnr Beyers Naude Drive and  
Ysterhout Road  
Randpark Ridge, Randburg  
Phone: (+27) 10 015 5750  
service@gardena.co.za

**Spain**  
Husqvarna España S.A.  
Calle de Rivas nº 10  
28052 Madrid  
Phone: (+34) 91 708 05 00  
atencioncliente@gardena.es

**Sri Lanka**  
Hunter & Company Ltd.  
130 Front Street  
Colombo  
Phone: 94-11 232 81 71  
hunters@eureka.lk

**Suriname**  
Deto Handelsmaatschappij N.V.  
Kernkampweg 72-74  
P.O. Box: 12782  
Paramaribo  
Suriname  
Phone: (+597) 438050  
info@deto.sr

**Sweden**  
Husqvarna AB /  
GARDENA Sverige  
Drottninggatan 2  
561 82 Huskvarna  
Sverige  
Phone: (+46) (0) 36-14 60 02  
info@gardena.se

**Switzerland/Schweiz**  
Husqvarna Schweiz AG  
Consumer Products  
Industriestrasse 10  
5506 Mägenwil  
Phone: (+41) (0) 62 887 37 90  
info@gardena.ch

**Taiwan**  
Hong Ying Trading Co.,Ltd.  
No. 46 Wu-Kun-Wu Road  
New Taipei City  
Phone: (+886) (02) 2298 1486  
salesgd1677friends.com.tw

**Tajikistan**  
ARIERS JV LLC  
39, Ayni Street, 734024  
Dushanbe, Tajikistan

**Thailand**  
Spica Co. Ltd  
243/2 Onnuch Rd., Prawat  
Bangkok  
10250 Thailand  
Phone: (+66) (0)2721 7373  
surapong@spica-siam.com

**Tunisia**  
Société du matériel agricole et  
maritime  
Nouveau port de peche de Sfax  
Bp 33  
Sfax-3065, Tunisia  
www.smartunisia.com  
Soulaymen Majdoub  
Soulaymen@smartunisia.com

**Turkey**  
Dost Bahçe  
Yunus Mah. Adil Sk. No:3  
Kartal  
Istanbul  
34873 Turkey  
Phone: (+90) 216 389 39 39  
info@dostbahce.com.tr  
www.dostbahce.com.tr

**Turkmenistan**  
I.E. Orazmuhammedov  
Nurmuhammed  
80 Ataturk, BERKARAR Shopping  
Center,  
Ground floor, A77b,  
Ashgabat 744000  
TURKMENISTAN  
Phone: (+993) 12 468859  
Mob: (+993) 62 22887  
info@jayhyzmat.com /  
bekgiyev@jayhyzmat.com  
www.jayhyzmat.com

**UAE**  
Al-Futtaim ACE Company  
L.L.C Building, Al Rebat Street  
Festival City, Dubai  
7880 UAE  
Phone: (+971) 4 206 6700  
ace@alfuttaim.ae

**Ukraine/Україна**  
AT «Альцест»  
вул Петропавлівська 4  
08130, Київська обл.  
Києво-Святошинський  
р-н. с. Петропавлівська  
Борщагівка  
Україна  
Тел.: (+38) 0 800 503 000

**Uruguay**  
FELI SA  
Entre Rios 1083  
11800 Montevideo  
Phone: (+598) 2203 1844  
info@felisa.com.uy

**Uzbekistan**  
AGROHOUSE MChJ  
O'zbekiston, 111112  
Toshkent viloyati  
Toshkent tumani  
Hasanboy QFY, THAY yoqasida  
Phone: (+998)-93-5414141  
(+998)-71-2096868  
info@agro.house  
www.agro.house

**Vietnam**  
Vision Joint Stock Company  
No. 09, Lot E2/D21, Ton That Thuyet  
Street, Dich Vong Hau Commune  
Cau Giay District, Hanoi  
Phone: (+8424)-38462833/34  
quynhnm@visionjsc.com.vn

**Zimbabwe**  
Cutting Edge  
159 Citroen Rd, Msasa  
Harare  
Phone: (+263) 8677 008685  
sales@cuttingedge.co.zw

1559-29.960.12/0521  
© GARDENA  
Manufacturing GmbH  
D-89079 Ulm  
http://www.gardena.com