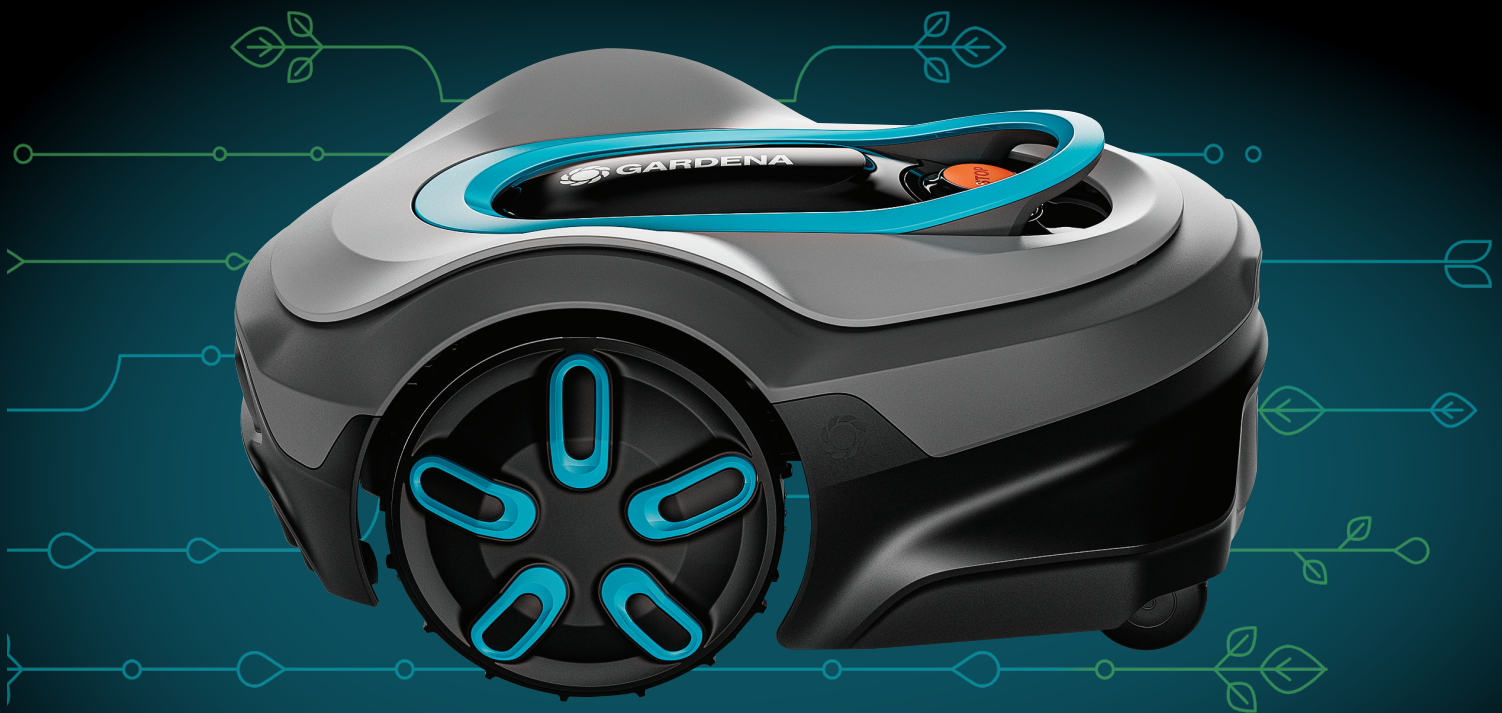


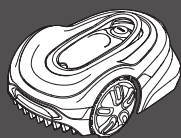


Quick guide

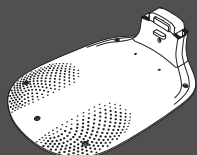
SILENO flex



What's in your box



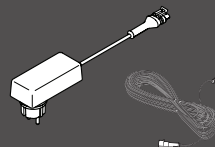
Robotic lawn mower



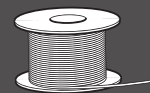
Charging station baseplate



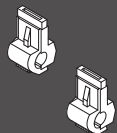
Charging top & charging module



Power supply & low-voltage cable



Wire
For both boundary wire & guide wire



Connectors



Couplers



Stakes



Screws & allen key to attach the charging station



Ruler
Incorporated in the box

What else you need



Hammer



Combination pliers



Spade (optional)



Adjustable pliers



Mobile device
Use the app to control and make settings for your robotic lawn mower

Getting started with the GARDENA robotic lawn mower

For more information, read the operator's manual supplied with the product.

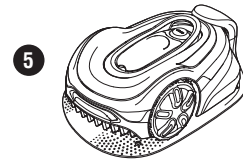
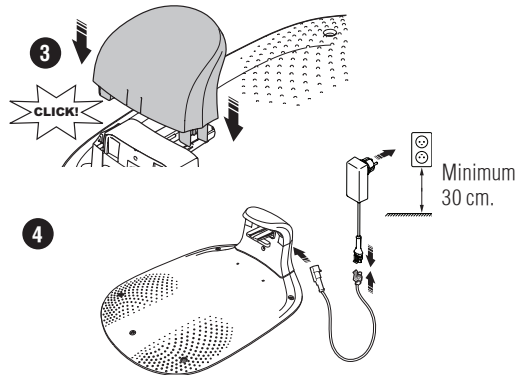
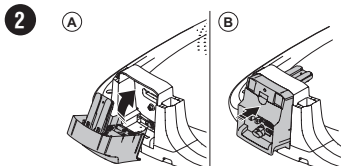
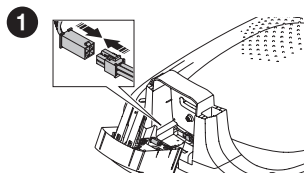
! Before the installation


For an easy installation make sure to cut the grass to the desired cutting height before you start the installation.
Good to know: The robotic lawn mower is rainproof and does not need a garage or other shelter.

Criteria for placing the charging station:

- On level ground.
- Near an electrical outlet.
- Obstacle-free 2 m space in front of the charging station.
- If possible, in a shady spot.

To connect the charging station



- 6 Push the **On/Off** button  for 3 seconds to set the robotic lawn mower to ON and to charge the battery.

! Use the wire supplied with the robotic lawn mower for the installation. It serves a dual purpose:

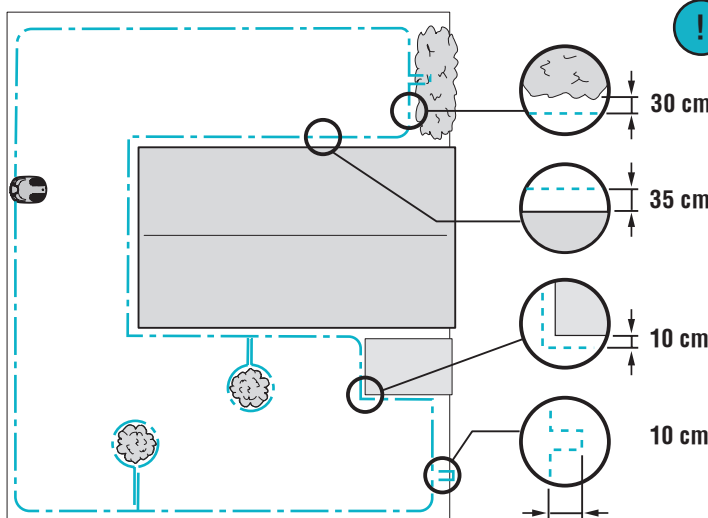
- Boundary wire that defines the work area.
 - Optional guide wires which help the robotic lawn mower to find its way to remote areas and back to the charging station.
- We recommend to install the guide wire if there is a narrow passage in the work area.

Boundary wire and guide wire must be connected at the end of the installation process. To ensure there is enough wire to do this, use about 20 cm of the boundary wire to form an eyelet at the position where the wires will be connected when laying it.

To lay the boundary wire

Lay out the wire on the lawn and fasten it with the stakes or bury it 1-20 cm into the ground.

- 7 Starting from the charging station, place the boundary wire around the designated work area and all the way back to the charging station.



Refer to chapter 3 in the operator's manual for details about dealing with trees, slopes, passages and secondary areas.

Tip! Lay the boundary wire and guide wire before connecting them to the charging station.

! Keep the distance: The robotic lawn mower drives past the boundary wire. To avoid damage to the robotic lawn mower, maintain the distances indicated below:

30 cm For objects between 1 and 2 cm in height:
e.g., flower beds, low edging.

35 cm For objects higher than 2 cm:
e.g., walls, shrubs.

10 cm For objects up to 1 cm in height:
e.g., paving stones, paths.

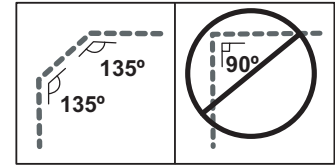
! Don't forget the eyelet: If you use a guide wire, make the eyelet at the point where the wire is the furthest away from the charging station.

- 8 Cut the boundary wire by the charging station, leave an extra 50 cm to be on the safe side. Continue with the guide wire.

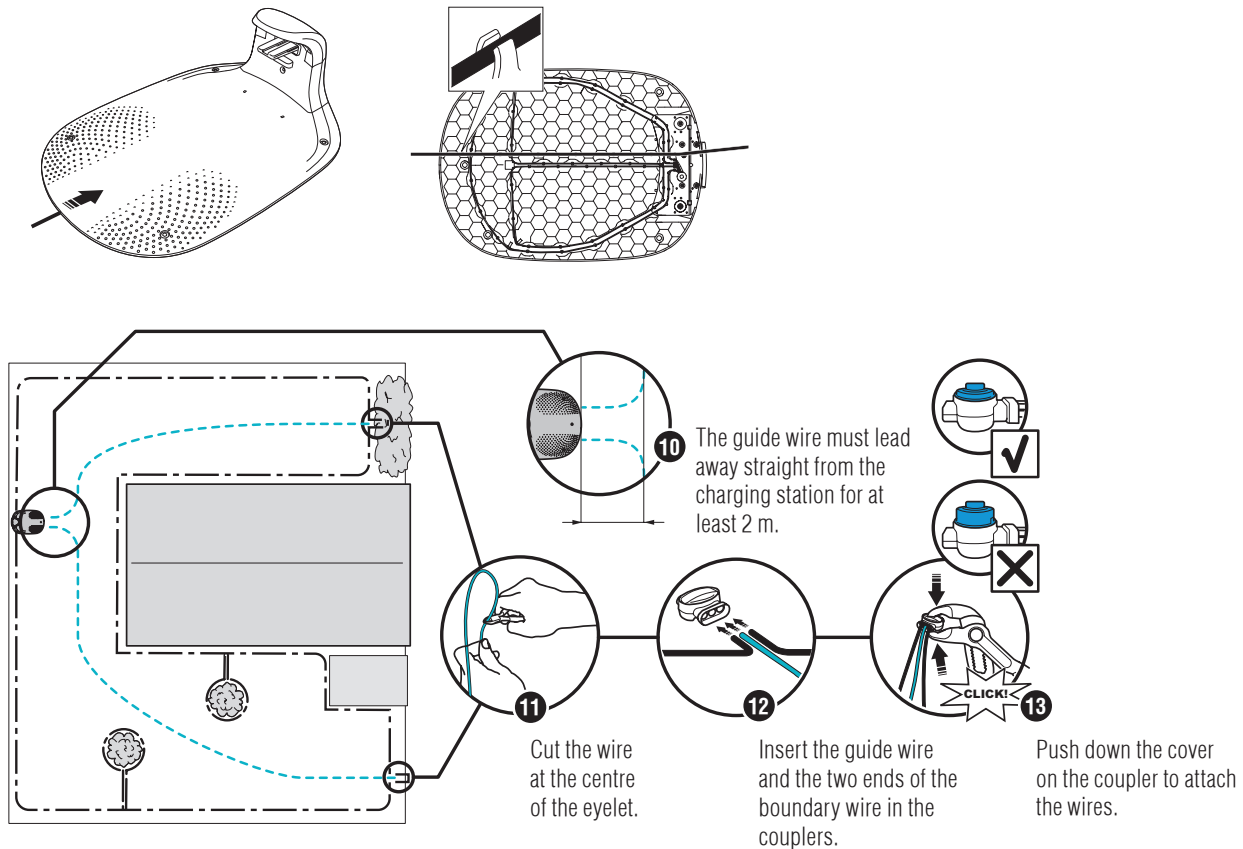
To lay the guide wire

- 9 Installation of guide wires is optional. Lay out a new wire between the charging station and the eyelet you made earlier so that you can connect it with the boundary wire. This wire guides the robotic lawn mower back to the charging station.

! The guide wire and boundary wire must not cross each other at any point.

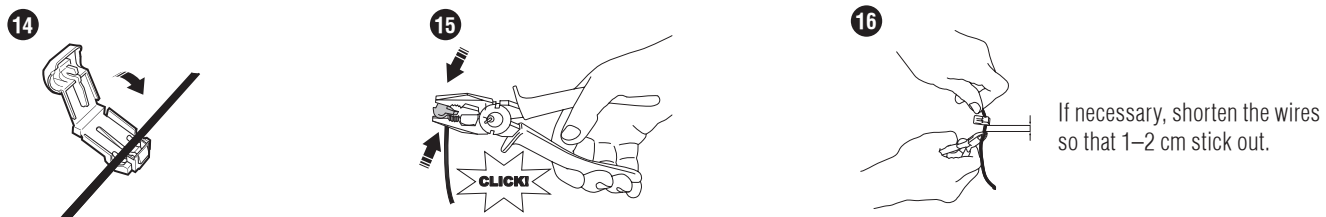


! Do not lay the guide wire in sharp bends.

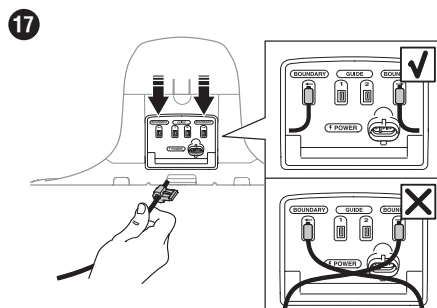


To connect the wires to the charging station

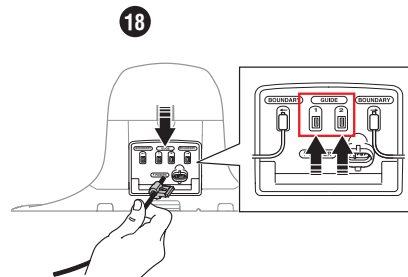
Almost done! Attach the connectors to the ends of the wires by the charging station.



Boundary wire



Guide wire



Did everything work so far?

If yes, the LED status light of the charging station is lit green. If it flashes blue, check if the wires are properly connected (see steps 17, 18) and that the coupler is fully pushed in (see step 13).

- 19 Attach the charging station to the ground with the supplied screws and the allen key.

21

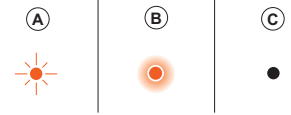
To download and pair with the GARDENA Bluetooth® App



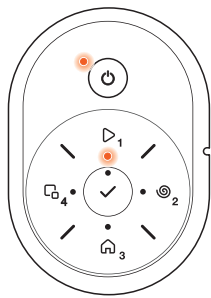
- Use the QR code or visit your app store to download the GARDENA Bluetooth® App.
- Activate Bluetooth® on your mobile device.
- Push the On/Off button for 3 seconds to set the robotic lawn mower to ON.
- Enter the factory PIN code 1234 with the keypad on the robotic lawn mower.
- Push the Connectivity button on the robotic lawn mower to enable the pairing operation mode. The Bluetooth® pairing operation mode is active for 3 minutes.
- Add the robotic lawn mower in the GARDENA Bluetooth® App.
- Follow the instructions and enter the factory pin code 1234. Change to a new pin code in the app's settings.

Operating modes for the robotic lawn mower and LED status lights

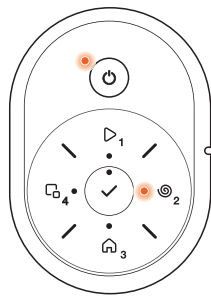
Start the robotic lawn mower with the app or use the **On/Off** button and enter the PIN code on the robotic lawn mower. Push the **Start** button and then the **OK** button . Push the **STOP** button to stop the robotic lawn mower. There are 4 light modes on the LED indicator: the light flashes quickly (A) the light is solid (B) and the light is out (C).



While the robotic mower is parked, you may set it to idle and select a different operating mode by pushing the **STOP** button.



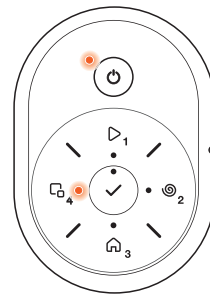
Cutting according to set Schedule or in operating mode Override schedule.



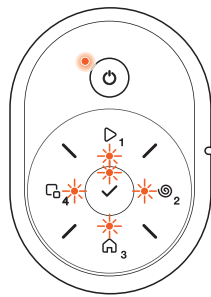
Cutting in operating mode SpotCut.



Parked.



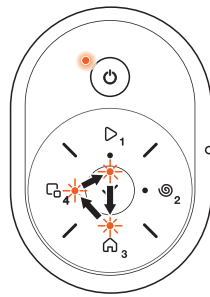
Cutting in operating mode Secondary area.



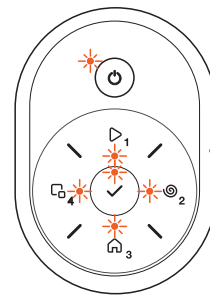
Waiting for PIN code.



Charging or Standby



Firmware update



Error

Learn more about operating modes and error messages in the operator's manual.

The right to make changes without prior notice is reserved.
Copyright © 2024 GARDENA Manufacturing GmbH. All rights reserved.
www.gardena.com

1144004-95



2024-12-02

The Bluetooth® word mark and logos are registered trademarks owned by Bluetooth SIG, inc. and any use of such marks by GARDENA is under license.

App Store and Apple logo are trademarks of Apple Inc.

Google Play and the Google Play logo are trademarks of Google LLC.

[gardena.com](https://www.gardena.com)